



Airwell

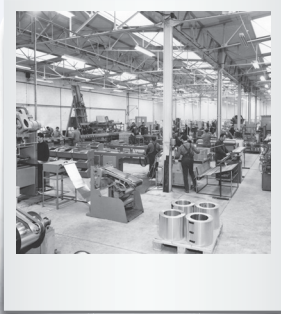
THERMODYNAMIC WATER HEATER RANGE
2023 • 2024



FRENCH BRAND



YOUR FRENCH REFERENCE
for over 75 years



Airwell, a French thermal equipment manufacturer committed to the energy transition

A French referenced brand for professionals

As an expert and creator of climate and thermal solutions, Airwell's mission is to create and cultivate well-being. Airwell is committed to:



Reinventing uses

→ To limit our environmental footprint.



Optimising consumption

→ To consume less and better.



Promoting solar energy

→ To preserve natural resources.

Historical French manufacturer

- 1947 ● Creation of the Airwell Group, the French pioneer in heat pumps.
- 1970 ● Airwell becomes the leading European heat pump manufacturer. Leader in Europe and Africa.
- 2008 ● Industrial disengagement and restructuring of the Airwell Group.
- 2014 ● Launch of the Airwell 2.0 strategic project (the transformation from a heat pump manufacturer to a solution provider).
- 2020 ● Launch of My Hybrid House, AirConnect Pro and Leezy.
- 2021 ● Airwell becomes Airwell Group following the acquisition of Airwell Residential by Airwell Distribution.
- 2022 ● Integration of the CSR approach into the strategy and award of the «Innovative Company» label by BPI France.

GROUPE AIRWELL

TABLE OF CONTENTS

	MODEL	REFERENCE	REFRI-GERANT TYPE	DHW profil	Characteristic
p.5	 <p>SPLIT THERMODYNAMIC WATER HEATER</p>	TFHX Eleo	R134A	L	Split
p.6	 <p>MONOBLOCK THERMODYNAMIC WATER HEATER</p>	TFHW Eleo	R134A	M & XL	Monoblock
p.8	 <p>SOLAR THERMODYNAMIC WATER HEATER</p>	TFHZ Eleo	R134A	M & L	Solar
p.10	Domestic hot water production kits				



Domestic hot water production



HYBRID
HOUSE by Airwell

Stainless steel tank

+ PRODUCT

- High performance
- Small footprint
- Anti-legionella function

FEATURES



DOMESTIC HOT WATER

TFHX ELEO

Split thermodynamic water heater



TFHX



YFHX

+ «SUSTAINABLE DEVELOPMENT»

- > Energy savings thanks to the A+ energy label.
- > High-performance product.
- > Electrical consumption reduced by up to 75%.
- > Holiday mode: the water heater switches off while you are away, and switches back on the day before you come back.

+ «USER»

- > Perfect to replace an electric tank.
- > "Peak/Off peak" operation.
- > Available water volume displayed on the control screen.
- > A variety of operating modes (ECO / BOOST / AUTO) for ease of use.

+ «INSTALLER»

- > No ventilation duct installation: split model.
- > Easy to install, thanks to its compact footprint.
- > Easy handling, thanks to its low weight < 80 kg.

+ «TECHNOLOGY»

- > No risk of contamination following a refrigerant leak, thanks to the external exchanger.
- > Hard water protection: stainless steel tank + magnesium anode.

See aeraulic accessories page 10

TECHNICAL DATA

INDOOR UNIT		TFHX-200H-03M25
Part number		7SP170001
Phase		Single-phase
AIR +7°C WATER 10/55°C		
Heating capacity	kW	2.13
Total power input	kW	0.69
COP		3.10
AIR +15°C WATER 10/55°C		
Heating capacity	kW	2.75
Total power input	kW	0.74
COP		3.70
PERFORMANCE (AVERAGE CLIMATE)		
DHW profile		L
Energy label		A+
Energetic efficiency	%	119
COP		2.66
Annual consumption	kWh	858
Heat up time	h:mm	7:50
Standby power input	W	87.0
Reference hot water temperature	°C	51.0
Volume of mixed water at 40°C	l	249
PERFORMANCE (WARMER CLIMATE)		
Energetic efficiency	%	136
Annual consumption	kWh	748
PERFORMANCE (COLDER CLIMATE)		
Energetic efficiency	%	93
Annual consumption	kWh	1089
OPERATING LIMITS		
Outdoor air temperature	°C	-7 / 43
Maximum water temperature	°C	70
INDOOR UNIT		
Sound pressure level (1 m)	dB(A)	18
Sound level	dB(A)	33
Outline dimensions (HxØ)	mm	1580x470
Package dimensions (WxHxD)	mm	595x1605x595
Net weight/Gross weight	kg	51/54
OUTDOOR UNIT		
Part number		7SP063214
Sound pressure level (1 m)	dB(A)	51
Sound level	dB(A)	65
Outline dimensions (WxHxD)	mm	858x545x320
Package dimensions (WxHxD)	mm	902x606x342
Net weight/Gross weight	kg	29/33
REFRIGERATION CIRCUIT		
Refrigerant/GWP		R134a/1430
Charge	kg	1.30
Suction pipe diameter	inches	3/8"
Liquid pipe diameter	inches	1/4"
POWER SUPPLY		
Phase/Voltage/Frequency		1P/220-240/50Hz
Electric backup heater	kW	2
Power cable section	mm ²	3G2.5
Fuse rating am	A	16
Electrical connections in/out	mm ²	3G1.5



Domestic hot water production



HYBRID
HOUSE by Airwell

TFHW ELEO

Monoblock thermodynamic water heater

Stainless steel tank

+ PRODUCT

- High performance
- Small footprint
- Anti-legionella function

FEATURES



DOMESTIC HOT WATER



TFHW 120L



TFHW 190 L / 260 L

+ «SUSTAINABLE DEVELOPMENT»

- > Energy savings thanks to the A+ energy label.
- > High-performance product.
- > Electrical consumption reduced by up to 75%.
- > Holiday mode: the water heater switches off while you are away, and switches back on the day before you come back.

+ «USER»

- > Perfect to replace an electric tank.
- > "Peak/Off peak" operation.
- > Available water volume displayed on the control screen.
- > A variety of operating modes (ECO / BOOST / AUTO) for ease of use.

+ «INSTALLER»

- > Easy to install, thanks to its compact footprint.
- > Easy handling, thanks to its low weight < 80 kg.

+ «TECHNOLOGY»

- > No risk of contamination following a refrigerant leak, thanks to the external exchanger.
- > Hard water protection: stainless steel tank + magnesium anode.

See aeraulic accessories page 10

TECHNICAL DATA

MODEL		TFHW-120H-03M25	TFHW-190H-03M25	TFHW-260H-03M25
Part number		7MB170001	7MB170002	7MB170003
Phase		Single-phase	Single-phase	Single-phase
AIR +7°C WATER 10/55°C				
Heating capacity	kW	1.25	1.25	1.25
Total power input	kW	0.40	0.40	0.40
COP		3.15	3.15	3.15
AIR +15°C WATER 10/55°C				
Heating capacity	kW	1.50	1.50	1.50
Total power input	kW	0.41	0.41	0.41
COP		3.70	3.70	3.70
PERFORMANCE (AVERAGE CLIMATE)				
DHW profile		M	M	XL
Energy label		A+	A++	A
Energetic efficiency	%	100	139	101
COP		2.55	3.21	2.41
Annual consumption	kWh	513	368	1653
Heat up time	h:mm	05:45	05:34	12:02
Standby power input	W	7	26	70
Reference hot water temperature	°C	52.3	52	59.5
Volume of mixed water at 40°C	l	192	277	378
PERFORMANCE (WARMER CLIMATE)				
Energetic efficiency	%	100	153	120
Annual consumption	kWh	513	335	1395
PERFORMANCE (COLDER CLIMATE)				
Energetic efficiency	%	100	104	80
Annual consumption	kWh	513	492	2009
SOUND LEVEL				
Sound pressure level (1m)	dB(A)	46	46	46
Sound level	dB(A)	59	59	59
OPERATING LIMITS				
Outdoor air temperature	°C	-7 / 43	-7 / 43	-7 / 43
Maximum water temperature	°C	70	70	70
REFRIGERATION CIRCUIT				
Refrigerant/GWP		R134a/1430	R134a/1430	R134a/1430
Charge	kg	0.85	0.85	0.85
POWER SUPPLY				
Phase/Voltage/Frequency		1P/220-240/50Hz	1P/220-240/50Hz	1P/220-240/50Hz
Electric backup heater	kW	2	2	2
Power cable section	mm ²	3G2.5	3G2.5	3G2.5
Fuse rating am	A	16	16	16
DIMENSIONS				
Outline dimensions (HxØ)		1310x568	1690x568	1950x568
Package dimensions (WxHxD)		690x1410x690	690x1750x690	690x2070x690
Net weight/Gross weight	kg	62/68	69/80	76/90



Domestic hot water production



HYBRID
HOUSE by Airwell

TFHZ ELEO

Solar thermodynamic water heater

Stainless steel tank

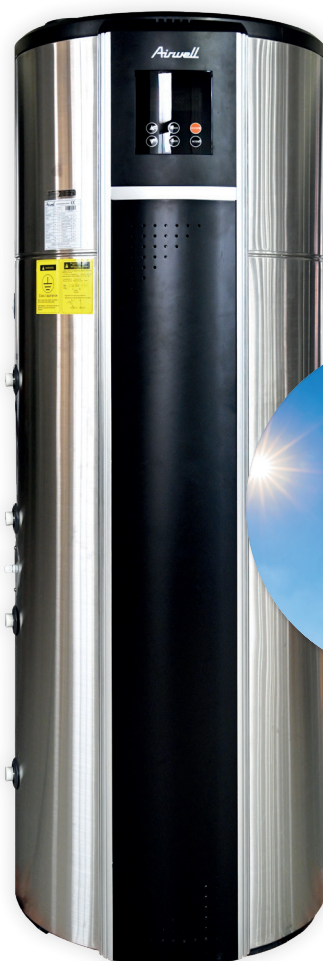
+ PRODUCT

- High performance
- Compatible with solar thermique
- Anti-legionella function

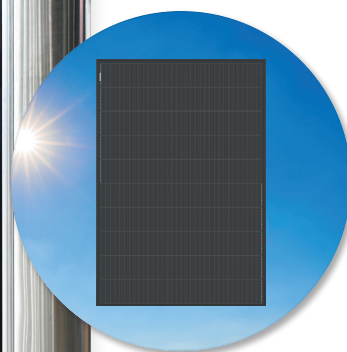
FEATURES



DOMESTIC HOT WATER



TFHZ



+ «SUSTAINABLE DEVELOPMENT»

- > Energy savings thanks to the A+ energy label.
- > High-performance product.
- > Electrical consumption reduced by up to 75%.
- > Holiday mode: the water heater switches off while you are away, and switches back on the day before you come back.

+ «USER»

- > Perfect to replace an electric tank.
- > "Peak/Off peak" operation.
- > Available water volume displayed on the control screen.
- > A variety of operating modes (ECO / BOOST / AUTO) for ease of use.

+ «INSTALLER»

- > Easy to install, thanks to its compact footprint.
- > Easy handling, thanks to its low weight < 80 kg.

+ «TECHNOLOGY»

- > No risk of contamination following a refrigerant leak, thanks to the external exchanger.
- > Hard water protection: stainless steel tank + magnesium anode.

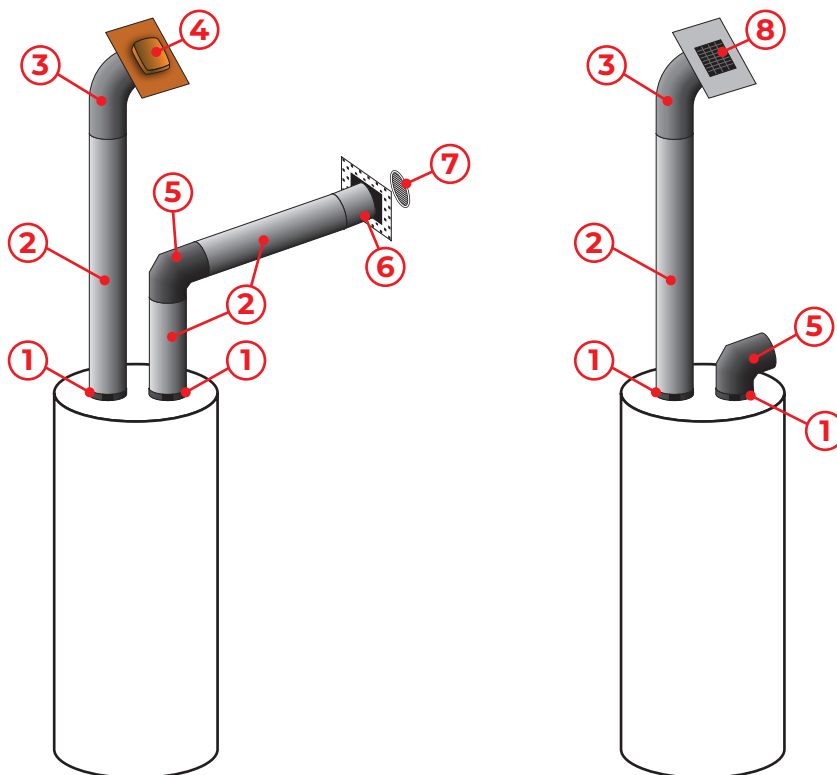
See aeraulic accessories page 10

TECHNICAL DATA

MODEL		TFHZ-190S-03M25	TFHZ-300S-03M25
Part number		7MB170005	7MB170004
Phase		Single-phase	
AIR +7°C WATER 10/55°C			
Heating capacity	kW	1.90	
Total power input	kW	0.60	
COP		3.15	
AIR +15°C WATER 10/55°C			
Heating capacity	kW	2.45	
Total power input	kW	0.67	
COP		3.68	
PERFORMANCE (AVERAGE CLIMATE)			
DHW profile		M	L
Energy label		A++	A++
Energetic efficiency	%	139	174
COP		3.21	4.12
Annual consumption	kWh	368	587
Heat up time	h:mm	5:34	7:49
Standby power input	W	26	27
Reference hot water temperature	°C	52	51.80
Volume of mixed water at 40°C	l	277	387
PERFORMANCE (WARMER CLIMATE)			
Energetic efficiency	%	153	191
Annual consumption	kWh	335	533
PERFORMANCE (COLDER CLIMATE)			
Energetic efficiency	%	104	133
Annual consumption	kWh	492	766
SOUND LEVEL			
Sound pressure level (1m)	dB(A)	46	48
Sound level	dB(A)	59	59
OPERATING LIMITS			
Outdoor air temperature	°C	-7 / 43	
Maximum water temperature	°C	70	
SOLAR CIRCUIT			
Coil surface	m ²	1	
Fittings	inches	3/4"	
Material		Stainless steel	
REFRIGERATION CIRCUIT			
Refrigerant/GWP		R134a/1430	
Charge	kg	1.10	
POWER SUPPLY			
Phase/Voltage/Frequency		1P/220-240/50Hz	
Electric backup heater	kW	2	
Power cable section	mm ²	3G2.5	
Fuse rating am	A	16	
DIMENSIONS			
Outline dimensions (HxØ)	mm	1485x646	1915x646
Package dimensions (WxHxD)	mm	690x1680x690	710x2050x710
Net weight/Gross weight	kg	83/105	92/114

ACCESSORIES

for thermodynamic water heater



NUMBER	ACCESSORY	VISUAL
1	160 Clamp 160/160 Adapter Sealing foam	
2	160 duct	
3	160 flexible	
4	160 ochre roof terminal	
5	90° elbow	
6	Sealing sleeve	
7	White PVC grill	
8	160 slate roof terminal	

KIT 1 SEPERATE RETURN		PART NUMBER: 7ACVF0602
Designation	Quantity	Scheme number
160 clamp	1	1
160/160 adapter	1	
Sealing foam	1	
90° elbow	1	5

KIT 2 WALL OUTLET		PART NUMBER: 7ACVF0604
Designation	Quantity	Scheme number
160 clamp	1	1
160/160 adapter	1	
Sealing foam	1	
160 duct	1 ml	2
90° elbow	1	5
Sealing sleeve	1	6
160/160 connector	1	7
White PCV grill	1	

KIT 3 EXTENSION KIT		PART NUMBER: 7ACVF0603
Designation	Quantity	Scheme number
160/160 connector	1	2
160 duct	1 ml	

KIT 4 SLATE ROOF		PART NUMBER: 7ACVF0605
Designation	Quantity	Scheme number
160 clamp	1	1
160/160 adapter	1	
Sealing foam	1	
160 duct	5 ml	2
160 flexible	1	3
160 slate roof terminal	1	8

KIT 5 OCHRE ROOF		PART NUMBER: 7ACVF0606
Designation	Quantity	Scheme number
160 clamp	1	1
160/160 adapter	1	
Sealing foam	1	
160 duct	5 ml	2
160 flexible	1	3
160 ochre roof terminal	1	4

KIT 6 45° ELBOW		PART NUMBER: 7ACVF0607
Designation	Quantity	Scheme number
160/160 connector	2	2
45° elbow	2	

AIRWELL, MAIN PARTNER OF **STADE FRANÇAIS PARIS**

Airwell



A COMMITTED PARTNERSHIP

Airwell, a French player committed to the energy transition, has chosen Stade Français Rugby for its first sports partnership, to represent their common values, in particular in terms of the ecological and environmental transitions.



AFTER-SALES
SERVICE

+33 (0)1 76 21 82 95

Monday to Friday 9 am-12:30 pm / 2 pm-5 pm

TECHNICAL SUPPORT

service@airwell.com

GROUPE AIRWELL

10, rue du fort de Saint Cyr - 78180 Montigny-le-Bretonneux, FRANCE

Tél.: +33 (0)1 76 21 82 00 - www.airwell.com

Printed in France