



Service Manual

FWDE Series

Indoor Units	Outdoor Units
AWSI-FWDE012-N11	AWAU-YBDE012-H11
AWSI-FWDE018-N11	AWAU-YBDE018-H11
AWSI-FWDE024-N11	AWAU-YBDE024-H11



REFRIGERANT

R410A

HEAT PUMP

SM FWDE 1-A.1 GB

MAY - 2013

Version:1

LIST OF EFFECTIVE PAGES

Note: Changes in the pages are indicated by a "Revision#" in the footer of each effected page (when none indicates no changes in the relevant page). All pages in the following list represent effected/ non effected pages divided by chapters.

Dates of issue for original and changed pages are:

Original 01 May 27, 2013

Total number of pages in this publication is **30** consisting of the following:

Page No.	Revision No. #	Page No.	Revision No. #	Page No.	Revision No. #
Title	1				
A.....	1				
i.....	1				
1-1 - 1-3	1				
2-1 - 2-3	1				
3-1 - 3-3	1				
4-1 - 4-5	1				
5-1	1				
6-1 – 6-12.....	1				

* Zero in this column indicates an original page.

Table of Contents

1.	INTRODUCTION	1-2
2.	PRODUCT DATA SHEET.....	2-1
3.	OUTLINE DIMENSIONS	3-1
4.	WIRING DIAGRAMS	4-1
5.	REFRIGERATION DIAGRAMS	5-1
6.	EXPLODED VIEWS AND SPARE PART LISTS.....	6-1

1. INTRODUCTION

1.1 General

FWDE series split ceiling mounted range comprise RC (heat pump) models, as follows:

- AWSI-FWDE012-N11// AWAU-YBDE012-H11
- AWSI-FWDE018-N11// AWAU-YBDE018-H11
- AWSI-FWDE024-N11// AWAU-YBDE024-H11

1.2 Main Features

The FWDE series benefits from the most advanced technological innovations, namely:

- DCI R410A models
- Microprocessor control
- Infrared remote control RC8 with LED
- Remote operation By connecting a special cable(7m length) to display box
- Fresh Air & Distribution treated air to adjacent room
- Indoor centrifugal fan
- High COP
- Ability to work on Low room temperature, up to 12°C
- Cooling operation at outdoor temperature down to -10°C
- Easy access to the interconnecting tubing and wiring connections, main control panel can slide out for service
- Automatic treated air sweep
- Low indoor and outdoor noise levels
- Easy installation and service
- Precharged refrigerant up to the max allowing tubing distance of 20m(Model 18/24)

1.3 Indoor Unit

The indoor unit is ceiling mounted, and can be easily fitted to many types of residential and commercial applications.

It includes:

- Coil with hydrophilic aluminum fins.
- Motorized flaps (two step motors)
- Advanced electronic control box assembly (DCI storm)
- Mounting plate

1.4 Filtration

The FWDE series presents several types of air filters:

- Easily accessible, and re-usable pre-filters (mesh)

1.5 Control

The microprocessor indoor controller, and an infrared remote control, supplied as standard, provide complete operating function and programming. For further details please refer to the Operation Manual.

1.6 Outdoor Unit

The FWDE outdoor units can be installed as floor or wall mounted units by using a wall supporting bracket. The metal sheets are protected by anti- corrosion paint work allowing long life resistance. All outdoor units are pre-charged. For further information please refer to the Product Data Sheet, Chapter 2.

It includes :

- Compressor mounted in a soundproofed compartment :
- Axial fan.
- Outdoor coil with hydrophilic louver fins for RC units.
- Outlet air fan grill.
- Service valves" flare" type connection.
- Interconnecting wiring terminal block.

1.7 Tubing Connections

Flare type interconnecting tubing to be produced on site.
For further details please refer to the Installation Manual, Chapter 10.

1.8 Accessories

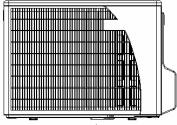
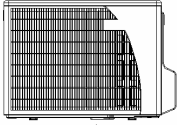
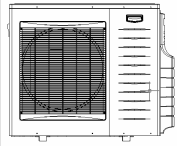
RCW Wall Mounted Remote Control

The RCW remote control is mounted on the wall, and controls the unit either as an infrared remote control or as a wired controller. The wired controller can control up to 10 indoor units with the same program settings and adjustment.
For further details please refer to the Technical Service Manual.

1.9 Inbox Documentation

Each unit is supplied with its own installation, operation and remote control manuals.

1.10 Matching Table

OUTDOOR UNITS	INDOOR UNITS		
	AWSI-FWDE012-N11	AWSI-FWDE018-N11	AWSI-FWDE024-N11
 AWAU-YBDE009-H11	✓		
 AWAU-YBDE018-H11		✓	
 AWAU-YBDE024-H11			✓

2. PRODUCT DATA SHEET

2.1 AWSI-FWDE012-N11// AWAU-YBDE012-H11

Model Indoor Unit		AWSI-FWDE012-N11	
Model Outdoor Unit		AWAU-YBDE012-H11	
Installation Method of Pipe		Flared	
Characteristics	Units	Cooling	Heating
Capacity (4)	Btu/hr	11940(5120~15010)	-
	kW	3.5(1.5~4.4)	-
Pdesign(5)	kW	3.5	-
Power input (4)	kW	0.98	-
EER (Cooling) or COP(Heating) (4)	W/W	3.57	-
Energy efficiency class		A	-
SEER/Energy Label		5.3/A	-
Power supply	V/Ph/Hz	230V/Single/50Hz	
Rated current	A	4.4	-
Starting current	A	10.5	
Circuit breaker rating	A	16	
INDOOR	Fan type & quantity		Centrifugal x 2
	Fan speeds	H/M/L	RPM 830/760/500
	Air flow (1)	H/M/L	m3/hr 450/400/300
	External static pressure	Min-Max	Pa 0
	Sound power level (2)	H/M/L	dB(A) 56/53/51
	Sound pressure level(3)	H/M/L	dB(A) 45/41/30
	Moisture removal		l/hr 1.5
	Condensate drain tube I.D		mm 16
	Dimensions	WxDxH	mm 820x190x630
	Weight		kg 22
	Package dimensions	WxDxH	mm 890x280x710
	Package weight		kg 26
	Units per pallet		units 14
	Units stacking		units 7 levels
OUTDOOR	Refrigerant control		EEV
	Compressor type,model		Single Rotary,DC Inverter,Panasonic 5RS102XAB
	Fan type & quantity		Propeller(direct) x 1
	Fan speeds	H/L	RPM 830
	Air flow	H/L	m3/hr 1780
	Sound power level	H/L	dB(A) 62
	Sound pressure level(3)	H/L	dB(A) 52
	Dimensions	WxDxH	mm 790x290x610
	Weight		kg 38.5
	Package dimensions	WxDxH	mm 970x394x650
	Packaged weight		kg 42.5
	Units per pallet		units 12
	Stacking height		units 3 levels
	Refrigerant type		R410A
	Refrigerant charge		kg 1.2
	Additional charge per 1 meter		g/m No Need
	Connections between units	Liquid line	In.(mm) 1/4"(6.35)
Suction line		In.(mm) 3/8"(9.53)	
Max.tubing length		m. Max.20	
Max.height difference		m. Max.10	
Operation control type		Remote control	
Heating elements (Option)		kW	
Others			

- (1)Airflow in ducted units;at nominal external static pressure.
 (2)Sound power in ducted units is measured at air discharge.
 (3)Sound pressure level measured at 1-meter distance from unit.
 (4)Rating conditions in accordance to ISO 5151 and ISO 13253 (for ducted units).
 (5)According to EN14825-2012

2.2 AWSI-FWDE018-N11// AWAU-YBDE018-H11

Model Indoor Unit		AWSI-FWDE018-N11	
Model Outdoor Unit		AWAU-YBDE018-H11	
Installation Method of Pipe		Flared	
Characteristics		Units	Cooling Heating
Capacity (4)		Btu/hr	17000(5120~19790)
		kW	5.0(1.5~5.8)
Pdesign(5)		kW	5.0
Power input (4)		kW	1.51
EER (Cooling) or COP(Heating) (4)		W/W	3.31
Energy efficiency class			A
SEER/Energy Label			5.1/A
Power supply		V/Ph/Hz	230V/Single/50Hz
Rated current		A	7.2
Starting current		A	10.5
Circuit breaker rating		A	20
INDOOR	Fan type & quantity		Centrifugal x 2
	Fan speeds	H/M/L	RPM
	Air flow (1)	H/M/L	m3/hr
	External static pressure	Min-Max	Pa
	Sound power level (2)	H/M/L	dB(A)
	Sound pressure level(3)	H/M/L	dB(A)
	Moisture removal		l/hr
	Condensate drain tube I.D		mm
	Dimensions	WxDxH	mm
	Weight		kg
	Package dimensions	WxDxH	mm
	Package weight		kg
	Units per pallet		units
	Units stacking		units
OUTDOOR	Refrigerant control		EEV
	Compressor type,model		Single Rotary,DC Inverter,Panasonic 5RS132ZAD21
	Fan type & quantity		Propeller(direct) x 1
	Fan speeds	H/L	RPM
	Air flow	H/L	m3/hr
	Sound power level	H/L	dB(A)
	Sound pressure level(3)	H/L	dB(A)
	Dimensions	WxDxH	mm
	Weight		kg
	Package dimensions	WxDxH	mm
	Packaged weight		kg
	Units per pallet		Units
	Stacking height		units
	Refrigerant type		
	Refrigerant chargeE		kg
	Additional charge per 1 meter		g/m
	Connections between units	Liquid line	In.(mm)
Suction line		In.(mm)	1/2"(12.7)
Max.tubing length		m.	Max.20
Max.height difference		m.	Max.10
Operation control type			Remote control
Heating elements (Option)		kW	
Others			

- (1)Airflow in ducted units;at nominal external static pressure.
- (2)Sound power in ducted units is measured at air discharge.
- (3)Sound pressure level measured at 1-meter distance from unit.
- (4)Rating conditions in accordance to ISO 5151 and ISO 13253 (for ducted units).
- (5)According to EN14825-2012

2.3 AWSI-FWDE024-N11 // AWAU-YBDE024-H11

Model Indoor Unit		AWSI-FWDE024-N11	
Model Outdoor Unit		AWAU-YBDE024-H11	
Installation Method of Pipe		Flared	
Characteristics		Units	Cooling
			Heating
Capacity (4)	Btu/hr		23200(5120~25930)
	kW		6.80(1.50~7.60)
Pdesign(5)	kW		6.8
Power input (4)	kW		2.25
EER (Cooling) or COP(Heating) (4)	W/W		3.02
Energy efficiency class			B
SEER/Energy Label			5.1/A
Power supply	V/Ph/Hz		230V/Single/50Hz
Rated current	A		10
Starting current	A		15
Circuit breaker rating	A		25
INDOOR	Fan type & quantity		Centrifugal x2
	Fan speeds	H/M/L	RPM
	Air flow (1)	H/M/L	m3/hr
	External static pressure	Min-Max	Pa
	Sound power level (2)	H/M/L	dB(A)
	Sound pressure level(3)	H/M/L	dB(A)
	Moisture removal		l/hr
	Condensate drain tube I.D		mm
	Dimensions	WxDxH	mm
	Weight		kg
	Package dimensions	WxDxH	mm
	Package weight		kg
	Units per pallet		units
	Units stacking		units
OUTDOOR	Refrigerant control		EEV
	Compressor type,model		Two Rotary, C-7RZ233H1A
	Fan type & quantity		Propeller(direct) x 1
	Fan speeds	H/L	RPM
	Air flow	H/L	m3/hr
	Sound power level	H/L	dB(A)
	Sound pressure level(3)	H/L	dB(A)
	Dimensions	WxDxH	mm
	Weight		kg
	Package dimensions	WxDxH	mm
	Packaged weight		kg
	Units per pallet		Units
	Stacking height		units
	Refrigerant type		R410A
	Refrigerant charge		kg
	Additional charge per 1 meter		g/m
	Connections between units	Liquid line	In.(mm)
Suction line		In.(mm)	5/8"(15.88)
Max.tubing length		m.	Max.30
Max.height difference		m.	Max.15
Operation control type			Remote control
Heating elements (Option)	kW		
Others			

- (1)Airflow in ducted units;at nominal external static pressure.
 (2)Sound power in ducted units is measured at air discharge.
 (3)Sound pressure level measured at 1-meter distance from unit.
 (4)Rating conditions in accordance to ISO 5151 and ISO 13253 (for ducted units).
 (5)According to EN14825-2012

3. OUTLINE DIMENSIONS

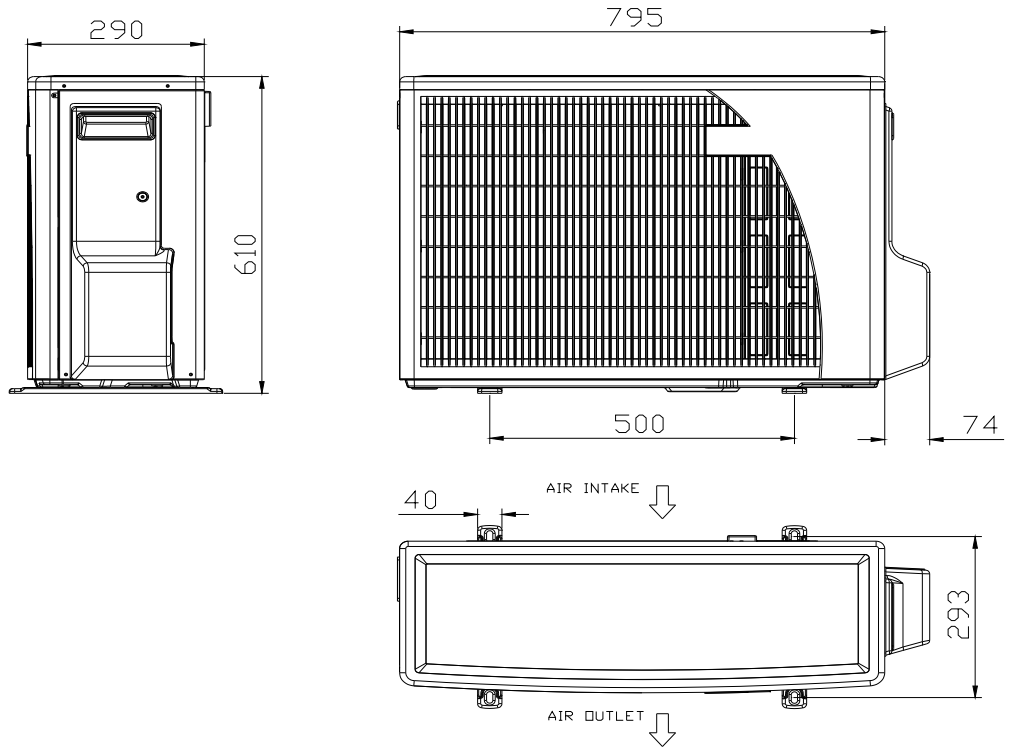
3.1 FWDE012



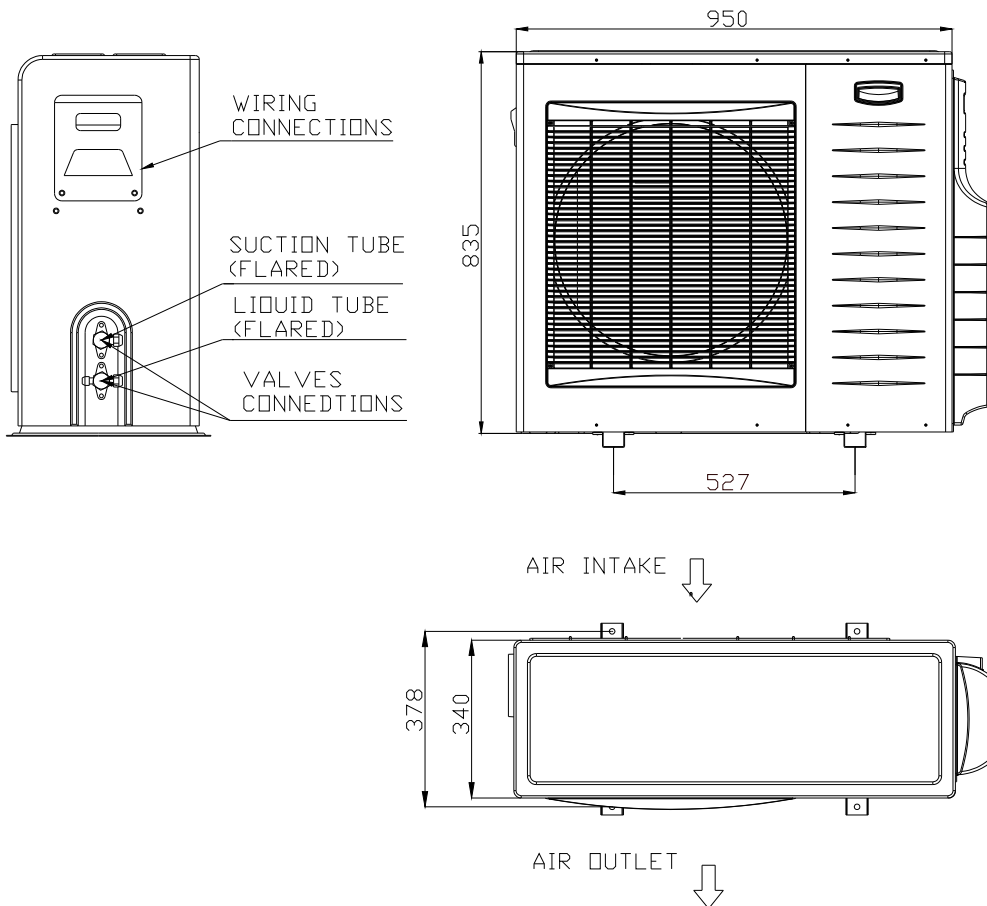
3.2 FWDE018/024



3.3 Outdoor Unit: YBDE 012/018

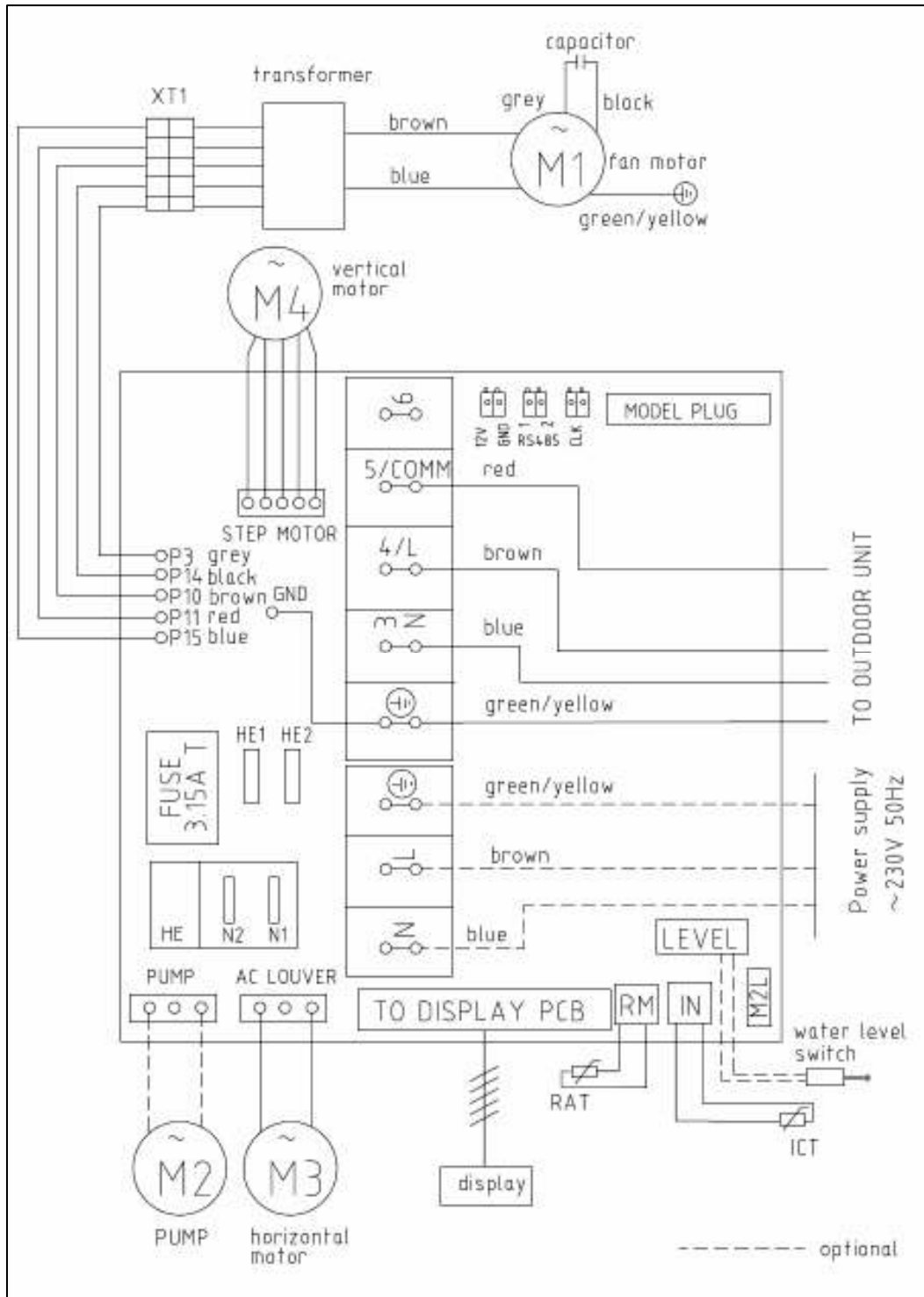


3.4 Outdoor Unit: YBD 024

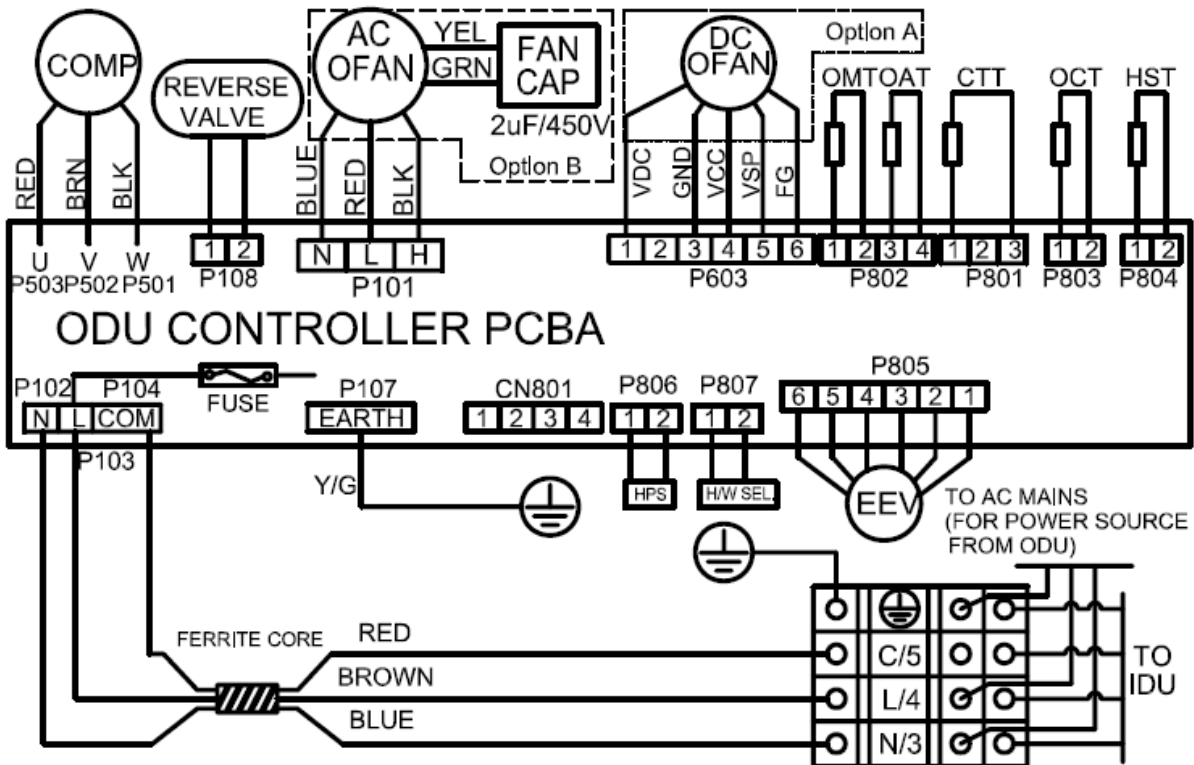


4. WIRING DIAGRAMS

4.1 Indoor Unit: FWDE012/018



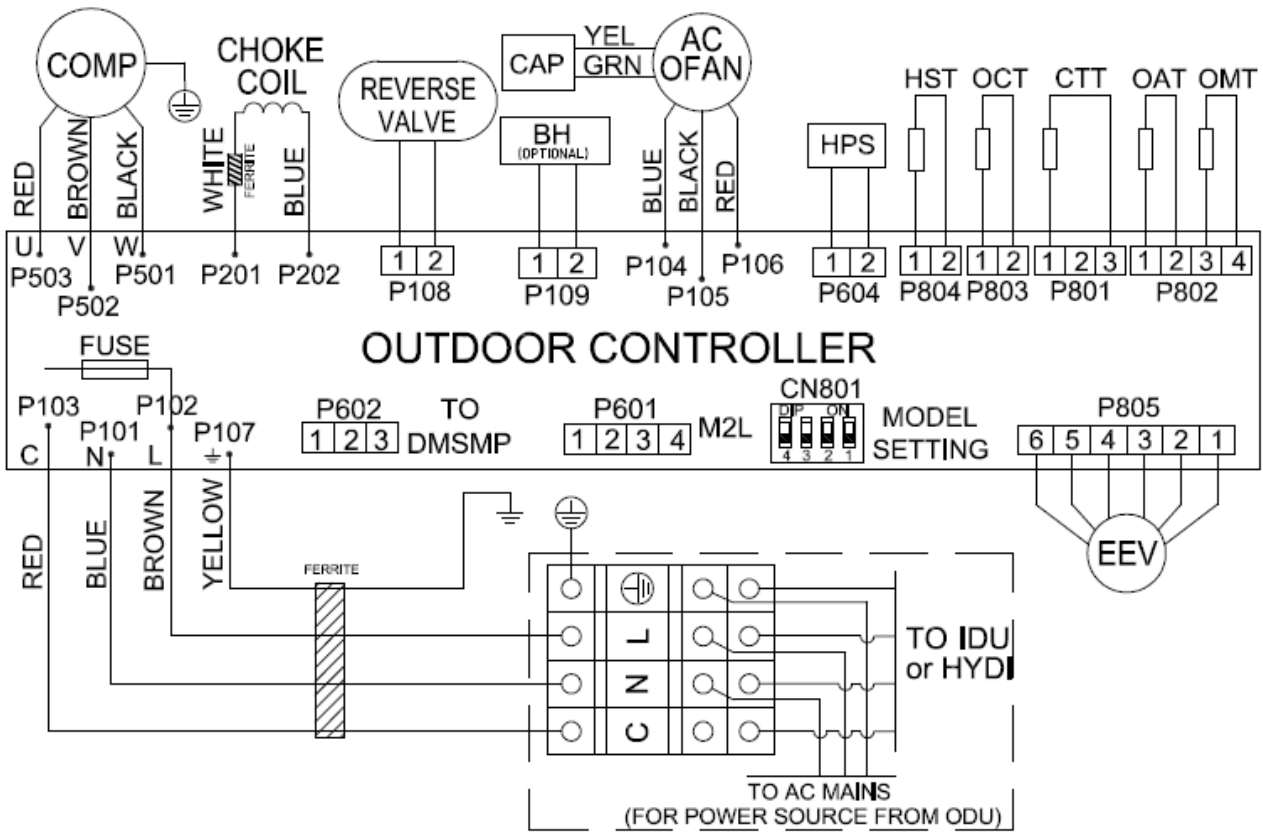
4.2 Outdoor Unit: YBDE012



NOTE: WIRING SCHEME WITHIN DASHED LINE BORDER IS OPTION FOR DC OUTDOOR FAN APPLICATION ONLY.

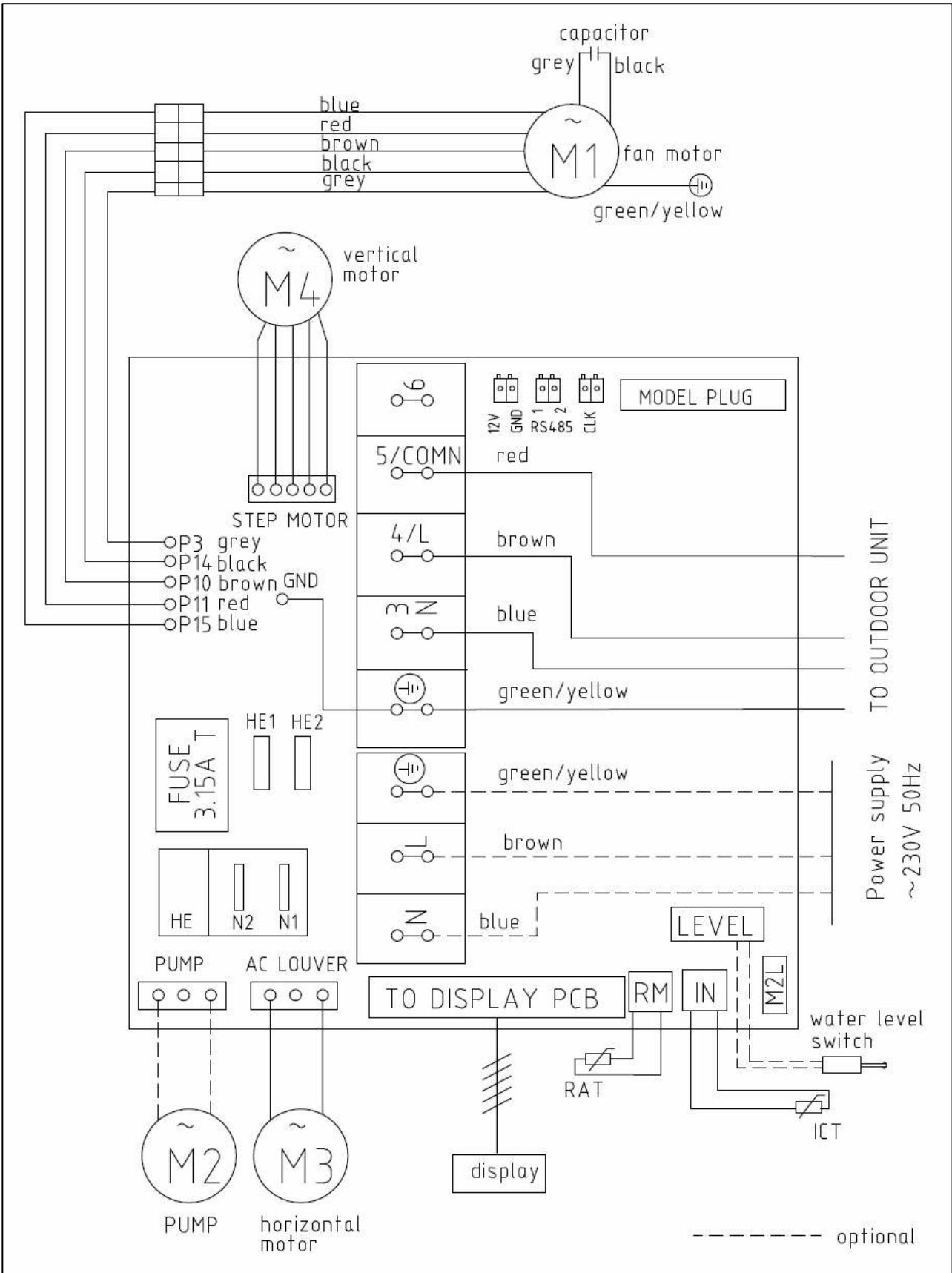
- Option A: DCI 1.8
- Option B: DCR 1.6

4.3 Outdoor Unit: YBDE018

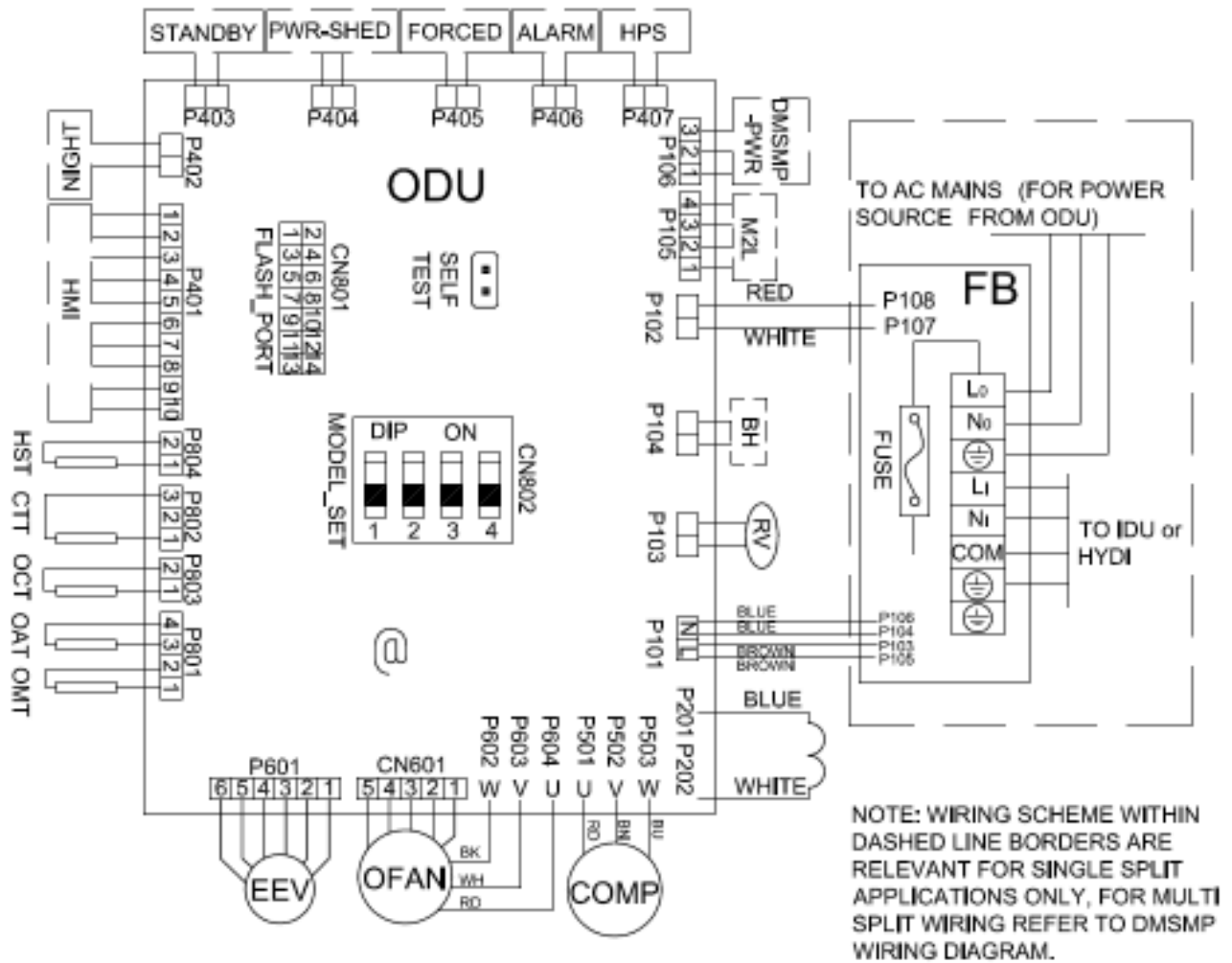


NOTE: WIRING SCHEME WITHIN DASHED LINE BORDERS ARE RELEVANT FOR SINGLE SPLIT APPLICATIONS ONLY, FOR HYDI BOARD WIRING REFER TO HYDI BOARD WIRING DIAGRAM.

4.4 Indoor Unit: FWDE024

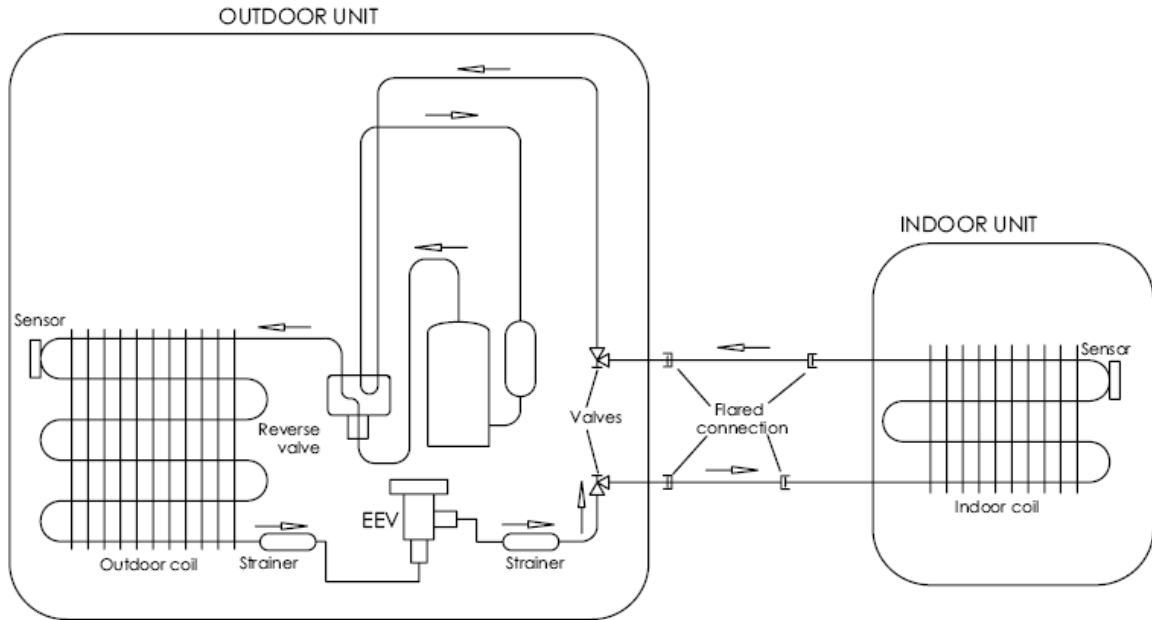


4.5 Outdoor Unit: YBDE024

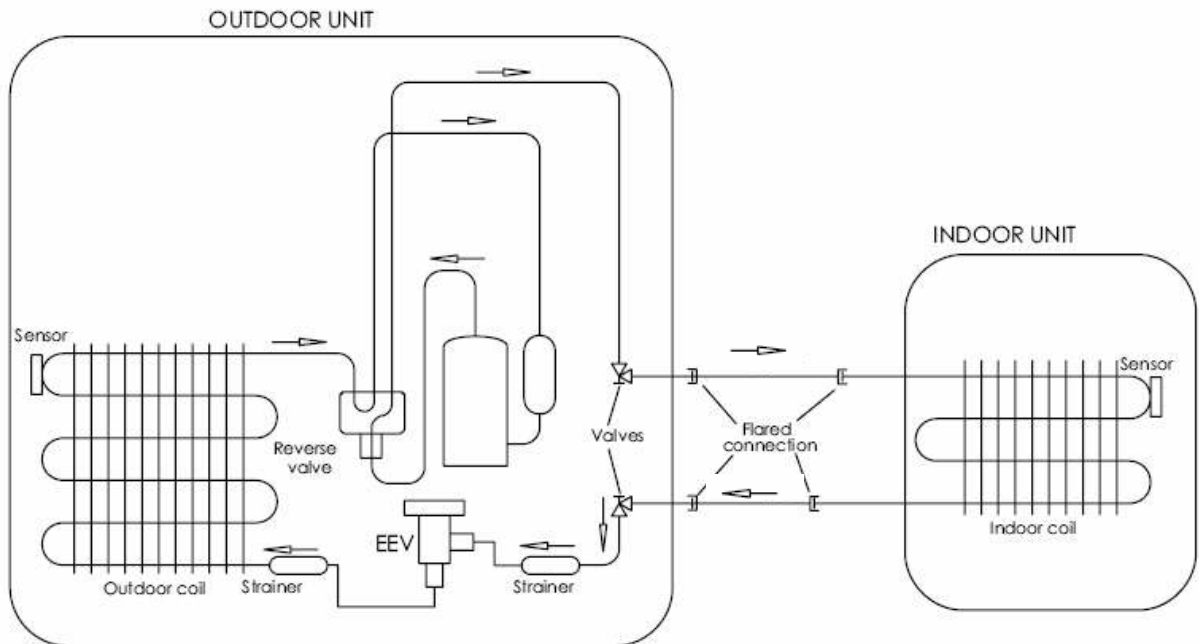


5. REFRIGERATION DIAGRAMS

5.1 Cooling Mode

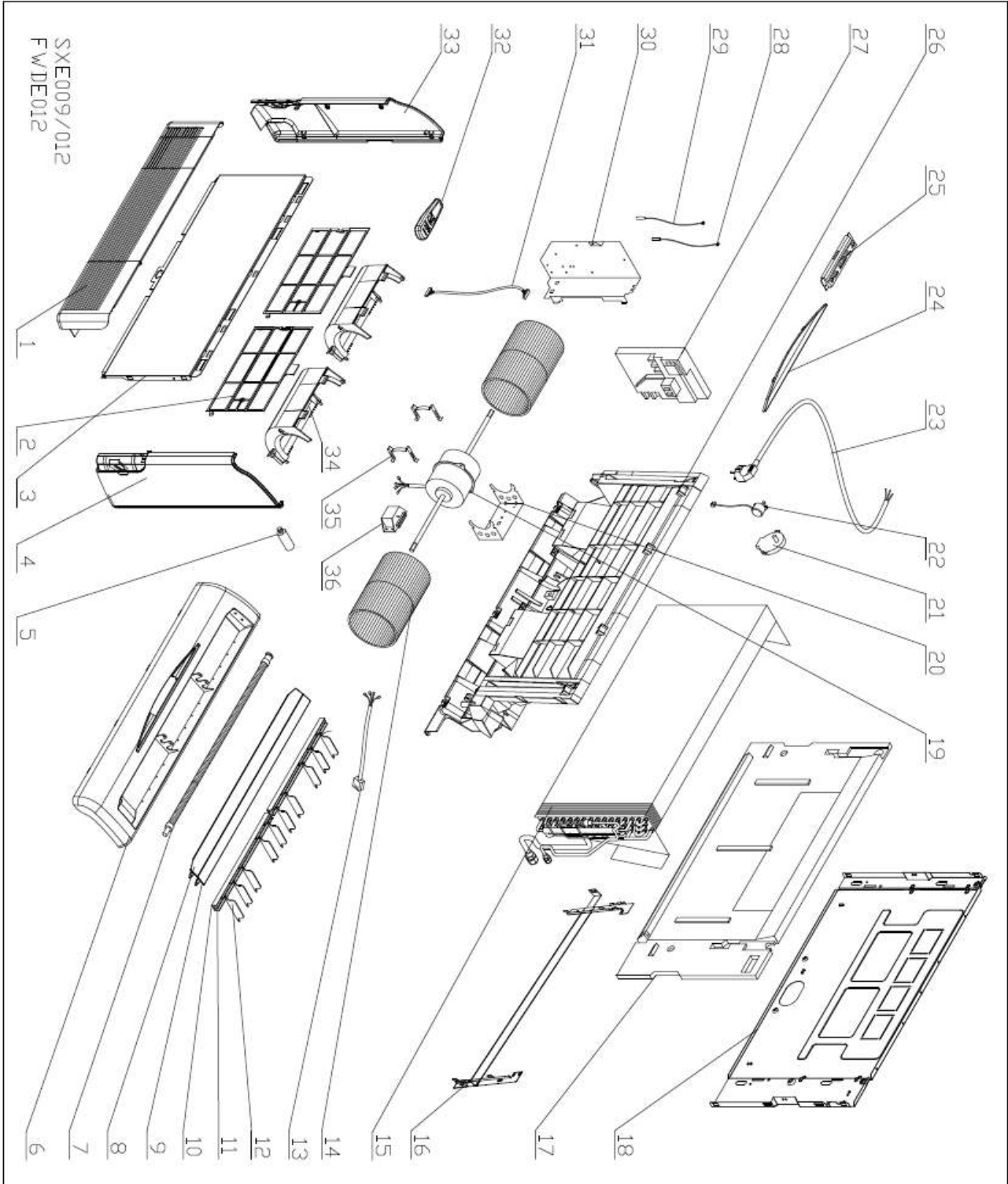


5.2 Heating Mode



6. EXPLODED VIEWS AND SPARE PART LISTS

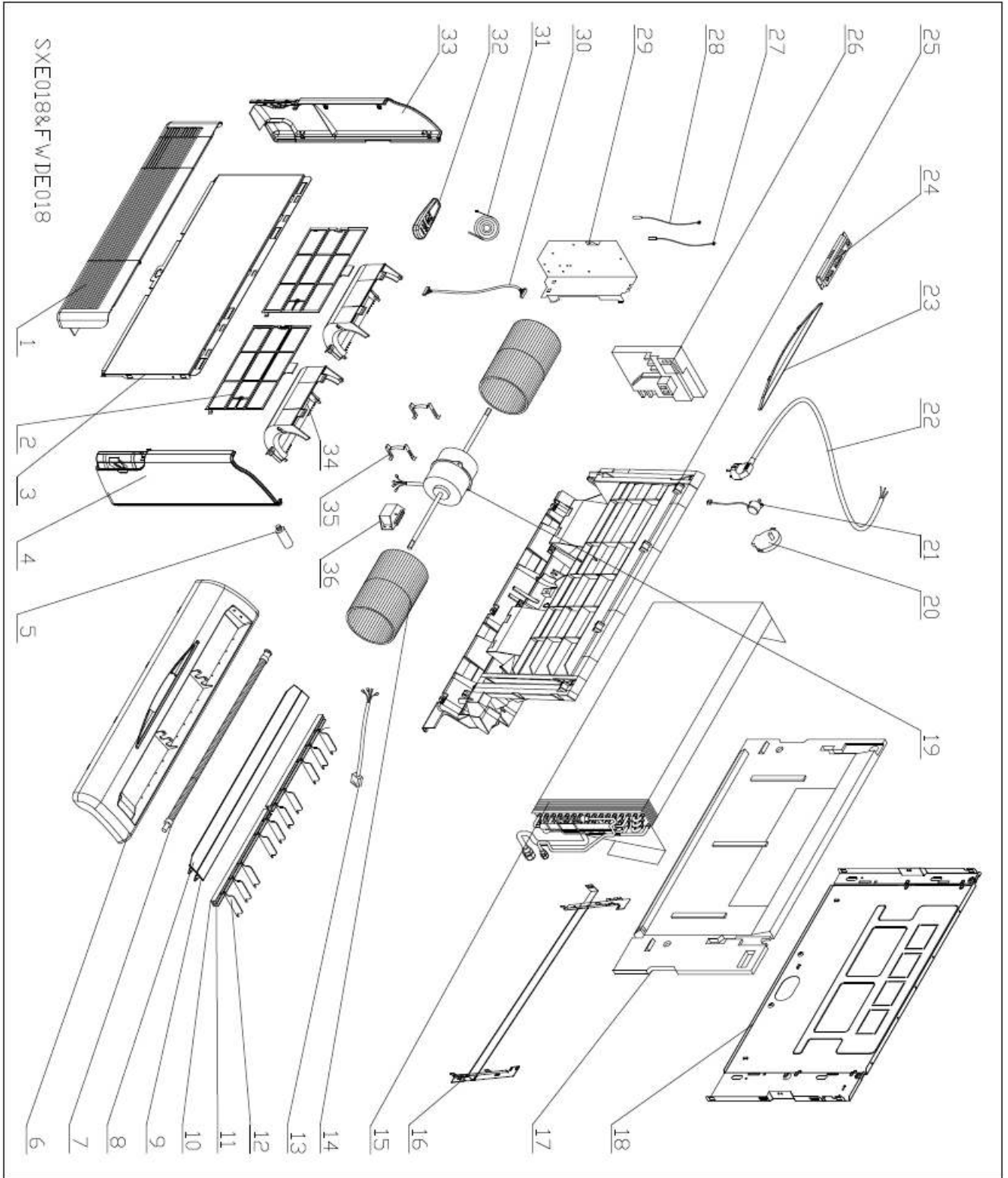
6.1 Exploded view of Indoor unit: FWDE012



6.2 Spare part list of Indoor Unit: FWDE012

Item	PN	Description	Qty
1	465800145	Air Intake Grille Assy. (Small)/RAL9003AW	1
2	221555	FILTER (SMALL)	2
3	464040018P4	Front Panel/RAL9003AW/AWSI-SXE009/12-N11/PXD	1
4	465060004	Side Plate / Left /RAL9003AW	1
5	455000600	Capacitor With Screw for fan motor 1uF (CBB65D)	1
6	465120035	Air Outlet Frame (Small)/RAL9003AW	1
7	285032	DRAIN TUBE	1
8	465160055	Horizonal Flap/Front (Small)/RAL9003AW	1
9	465160056	Horizonal Flap/Black (Small)/RAL9003AW	1
10	465340138	Cover/Linkage/RAL9003AW	2
11	465160058	Linkage/ Veritcal Flap/RAL9003AW	2
12	465160057	Vertical Flap/RAL9003AW	10
13	4525333	HPI PXD 9/12 Motor connective wire	1
14	293321	CENTRIFUGAL FAN (SMALL)	2
15	462350111	Evaporator assy./PXD (Wine Cellar) 35 DCI	1
16	466235	MOUNTED BRCKET ASSY. (SMALL)	1
17	382334	BASE EPS (SMALL)	1
18	307979	BACK PANEL (SMALL)	1
19	4520158R	MOTOR PXD 9-12-15	1
20	323425	MOTOR SUPPORT LENGTH 99	1
21	263034	SWING MOTOR	1
22	436665	STEP MOTOR	1
23	455013705R	Power Cord Without Plug/3G/1.5/2100	1
24	465720811	Panel Assy./PXD (Wine Cellar) Display/Airwell	1
25	467300306R	Display Board / PXD Wine cellar display	1
26	373247	FAN FRAME (SMALL)	1
27	452935900R	INDOOR STORM DC INVERTER CONTROLLER (ENGLISH) 916A521-01	1
28	467400053	ICT Indoor Coil Temperature (RT2) sensor/10K	1
29	467400025	Indoor Air Inlet Temperature Sensor 650mm	1
30	311036	STORM METAL PANEL	1
31	391508	CABLE DISPLAY	1
32	467240052	Remote Controller Assy. with Batteries. for Export RC08	1
33	465060005	Side Plate / Right /RAL9003AW	1
34	372341	FAN COVER (SMALL)	2
35	324296	MOTOR SPRING CLIP	2
36	452987400	Auto-transformer	1

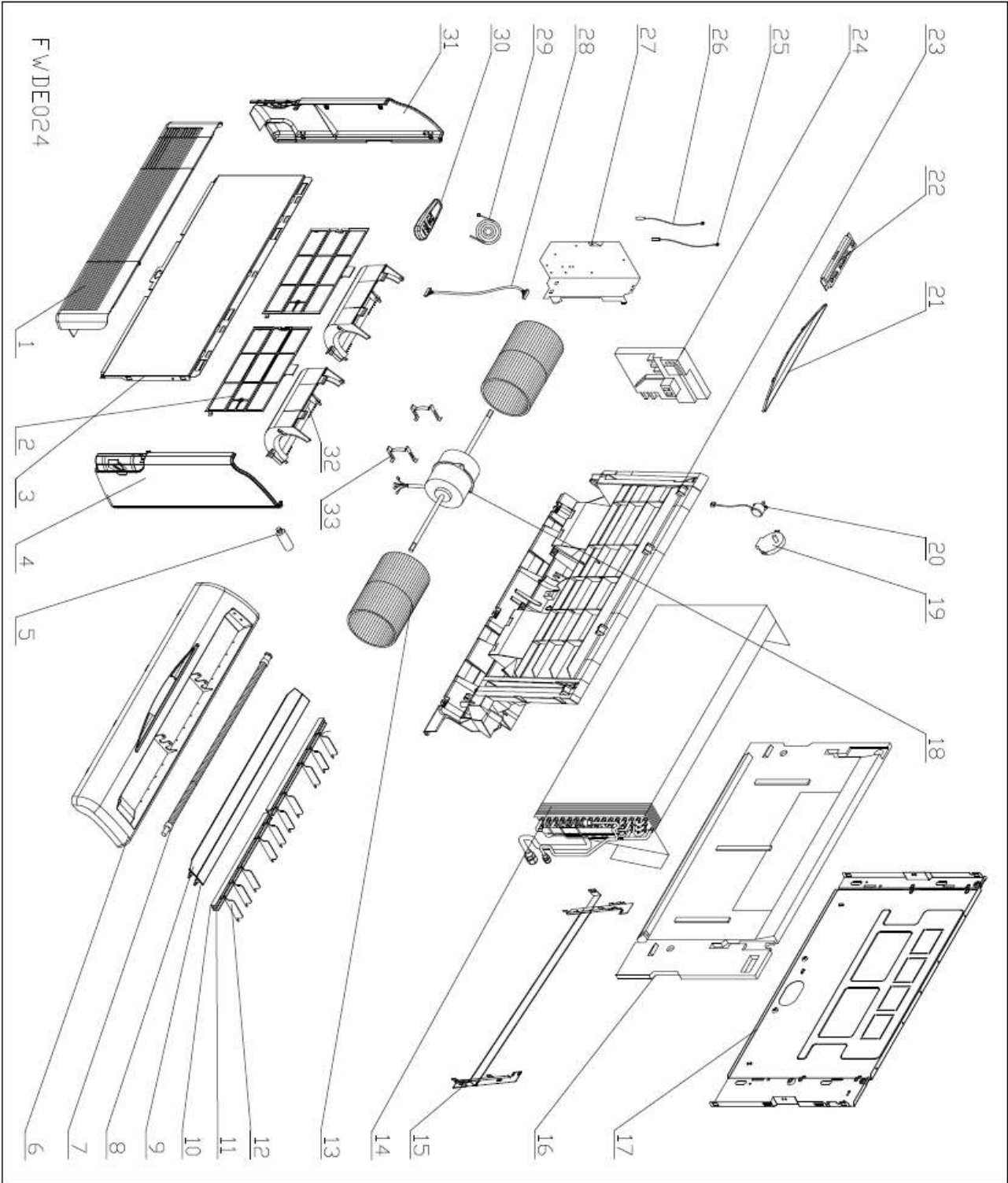
6.3 Exploded view of Indoor unit: FWDE018



6.4 Spare part list of Indoor Unit: FWDE018

Item	PN	Description	Qty
1	465800148	Air Intake Grille Assy. (Big)/RAL9003AW	1
2	221554	FILTER PXD (BIG)	2
3	465020284P4	Front Panel/RAL9003AW/AWSI-SXE018/24-N11/PXD	1
4	465060004	Side Plate / Left /RAL9003AW	1
5	455000604	Capacitor With Screw 1.5uF (CBB65D)	1
6	465120036	Air Outlet Frame (Big)/RAL9003AW	1
7	285032	DRAIN TUBE	1
8	465160059	Horizontal Louver/Front (Big)/RAL9003AW	1
9	465160060	Horizontal Flap/Black (Big)/RAL9003AW	1
10	465340138	Cover/Linkage/RAL9003AW	3
11	465160058	Linkage/ Veritcal Flap/RAL9003AW	3
12	465160057	Vertical Flap/RAL9003AW	16
13	4525333	HPI PXD 9/12 Motor connective wire	1
14	293322	CENTRIFUGAL FAN (BIG)	2
15	462350112	Evaporator assy./PXD 50 DCI	1
16	466236	MOUNTED BRCKET ASSY. (BIG)	1
17	382333	BASE EPS (BIG)	1
18	307980	BACK PANEL (BIG)	1
19	4520931R	Motor Assy. for PXD24-28	1
20	263034	SWING MOTOR	1
21	436665	STEP MOTOR	1
22	455013707R	Power Cord Without Plug/3G/2.5/2100	1
23	465720811	Panel Assy./PXD(Wine Cellar)Display/Airwell	1
24	467300306R	Display Board / PXD Wine cellar display	1
25	373246	FAN FRAME (BIG)	1
26	452935900R	INDOOR STORM DC INVERTER CONTROLLER (ENGLISH) 916A521-01	1
27	467400053	ICT Indoor Coil Temperature (RT2) sensor/10K	1
28	467400025	Indoor Air Inlet Temperature Sensor 650mm	1
29	311036	STORM METAL PANEL	1
30	391508	CABLE DISPLAY	1
31	4520904	MAGNET PART	2
32	467240052	Remote Controller Assy. with Batteries. for Export RC08	1
33	465060005	Side Plate / Right /RAL9003AW	1
34	372340	FAN COVER (BIG)	2
35	324296	MOTOR SPRING CLIP	2
36	453206900	Transformer	1

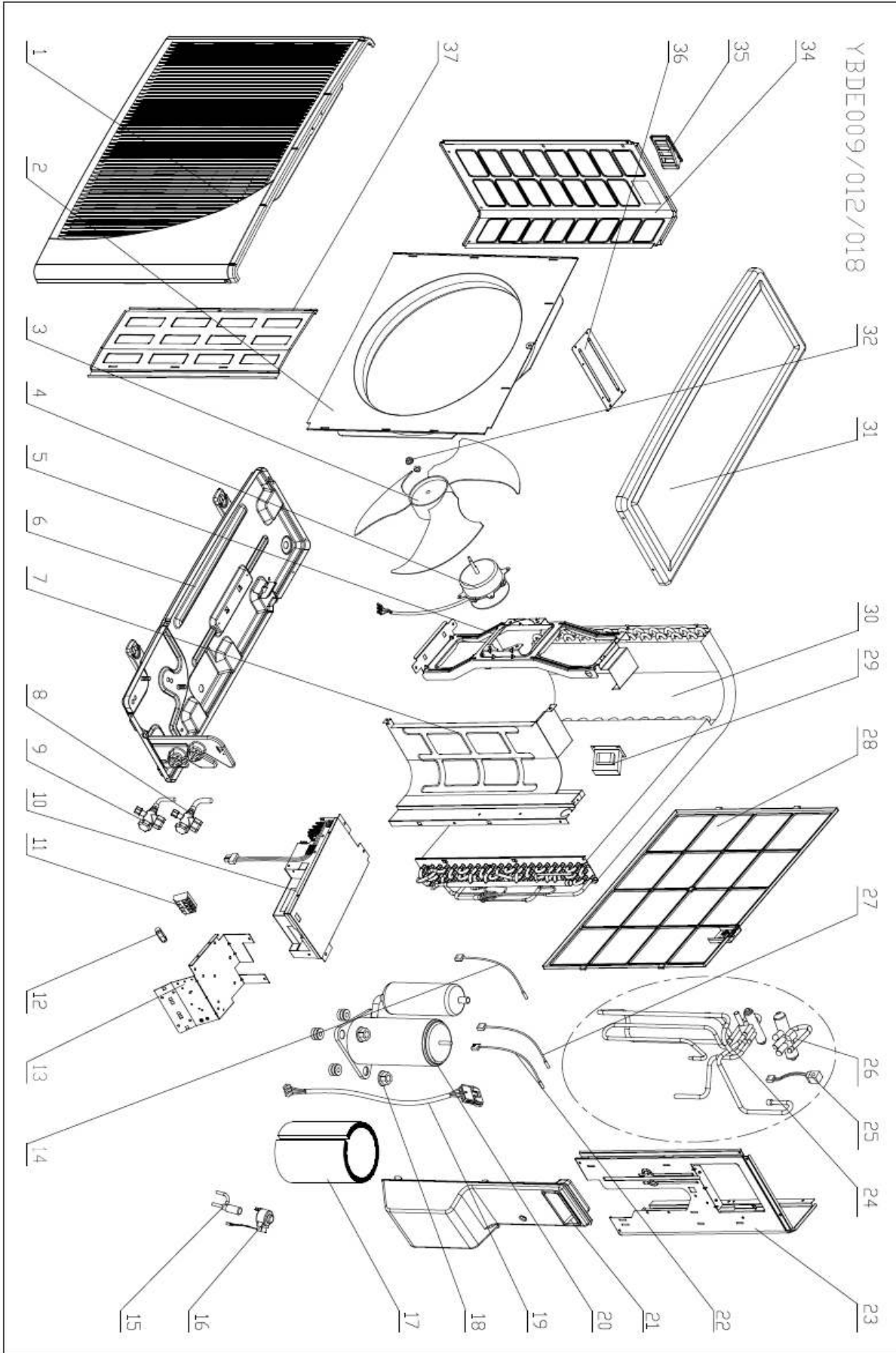
6.5 Exploded view of Indoor unit: FWDE024



6.6 Spare part list of Indoor Unit: FWDE024

Item	PN	Description	Qty
1	465800148	Air Intake Grille Assy.(Big)/RAL9003AW	1
2	221554	FILTER PXD (BIG)	2
3	465020284P4	Front Panel/RAL9003AW/AWSI-SXE018/24-N11/PXD	1
4	465060004	Side Plate / Left /RAL9003AW	1
5	455000604	Capacitor With Screw 1.5uF (CBB65D)	1
6	465120036	Air Outlet Frame (Big)/RAL9003AW	1
7	285032	DRAIN TUBE	1
8	465160059	Horizontal Louver/Front (Big)/RAL9003AW	1
9	465160060	Horizontal Flap/Black (Big)/RAL9003AW	1
10	465340138	Cover/Linkage/RAL9003AW	3
11	465160058	Linkage/ Veritcal Flap/RAL9003AW	3
12	465160057	Vertical Flap/RAL9003AW	16
13	293322	CENTRIFUGAL FAN (BIG)	2
14	462350113	Evaporatorassy./PXD 72 DCI	1
15	466236	MOUNTED BRCKET ASSY.(BIG)	1
16	382333	BASE EPS (BIG)	1
17	307980	BACK PANEL (BIG)	1
18	466100005R	Metal Motor Assy./ PXD DCI	1
19	263034	SWING MOTOR	1
20	436665	STEP MOTOR	1
21	465720811	Panel Assy./PXD(Wine Cellar)Display/Airwell	1
22	467300306R	Display Board / PXD Wine cellar display	1
23	373246	FAN FRAME (BIG)	1
24	452935900R	INDOOR STORM DC INVERTER CONTROLLER	1
25	467400053	ICT Indoor Coil Temperature (RT2) sensor/10K	1
26	467400025	Indoor Air Inlet Temperature Sensor 650mm	1
27	311036	STORM METAL PANEL	1
28	391508	CABLE DISPLAY	1
29	4520904	MAGNET PART	2
30	467240052	Remote Controller Assy. with Batteries.for Export RC08	1
31	465060005	Side Plate / Right /RAL9003AW	1
32	372340	FAN COVER (BIG)	2
33	324296	MOTOR SPRING CLIP	2

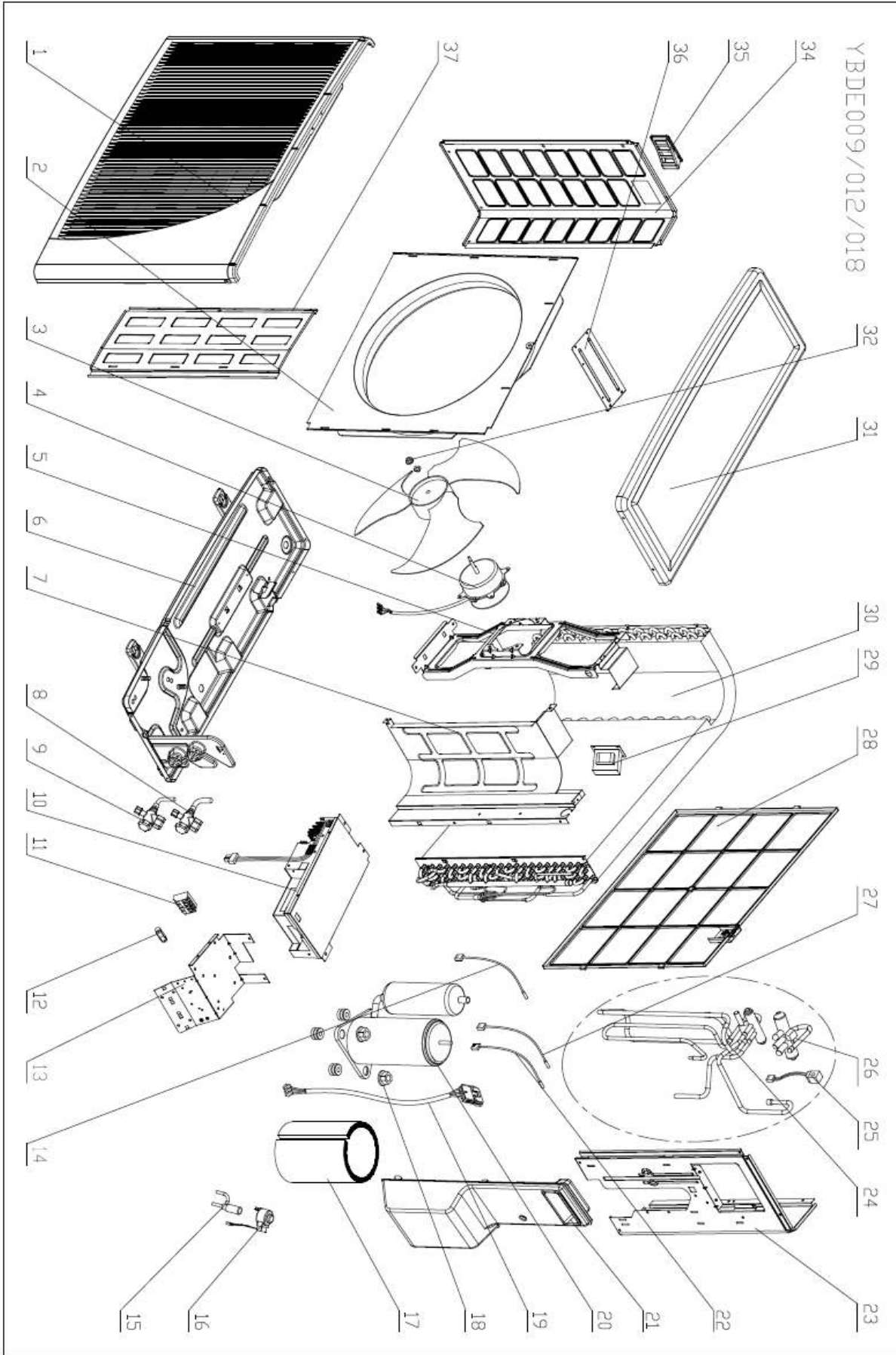
6.7 Exploded view of outdoor unit: YBDE012



6.8 Spare part list of Outdoor Unit: YBDE012

Item	PN	Description	Qty
1	433218	Front Panel A	1
2	4526340	Air inlet ring-420	1
3	4526476	Axial fan OD=401	1
4	4527092R	DC MOTOR for DCI 25/35	1
5	433215	Motor Support	1
6	4523059P1	Painting Base Assy.	1
7	452808800	Partition Assy.	1
8	461010004	Gas Valve 3/8" R410A	1
9	461000004	Liquid Valve 1/4" R410A)	1
10	467300365R	Controller/DCI 1.8KW (SCM1243MF) BD	1
11	4519188	4 poles terminal block	1
12	204107	Cable clip Nylon	1
13	453012700	Electric Panel	1
14	467400200	CTT Compressor Top Temperature Sensor/10K/Resin-capsulation	1
15	4526827	Electronical expansion valve CAM-BD15 FKS-1	1
16	452682802	EEV coil CAM-MD12FKS-2 (White connector, 530mm)	1
17	469120004	Insulation 2 Felt+PVC/ Compressor DCI 25 35	1
18	4510677	Nut With Flange M8 -D=24 GB6187-86	1
19	4526221	Compressor wire	1
20	4526204	DC INVERTER Compressor Assy 5RS102XAB	1
21	465340080	Valve Cover/PP+UV 5VA/ONG3	1
22	467400056	OCT Outdoor Coil Temperature Sensor/10K	1
23	433226P1	Right side panel /painting plate/DCI 25/35/ONG3	1
24	461600131	4-Way Valve Assy./DCI 25/35/ONG3	1
25	461030008	4-W valve coil /SHF(L)-4H/7H	1
26	461020006	4-W valve /DSF-4-R410A	1
27	467400040	Condenser Middle Temperature Sensor/OAT & OMT/DCR LC 25/35	1
28	433228	Back Side Net	1
29	467550014R	Choke/9A/3mH/DCR 1.6KW	1
30	4526368	Condensor Soldering assy	1
31	433231P1	Painting Top Cover/DCI 25/35/ONG3	1
32	4519300	Nut M5 L	1
33	433224P1	Left Side Panel/Painting Plate/DCI 25/35/ONG3	1
34	433225	Handle	1
35	4526298	Bridge	1
36	433223P5	Painting Insulation Plate	1

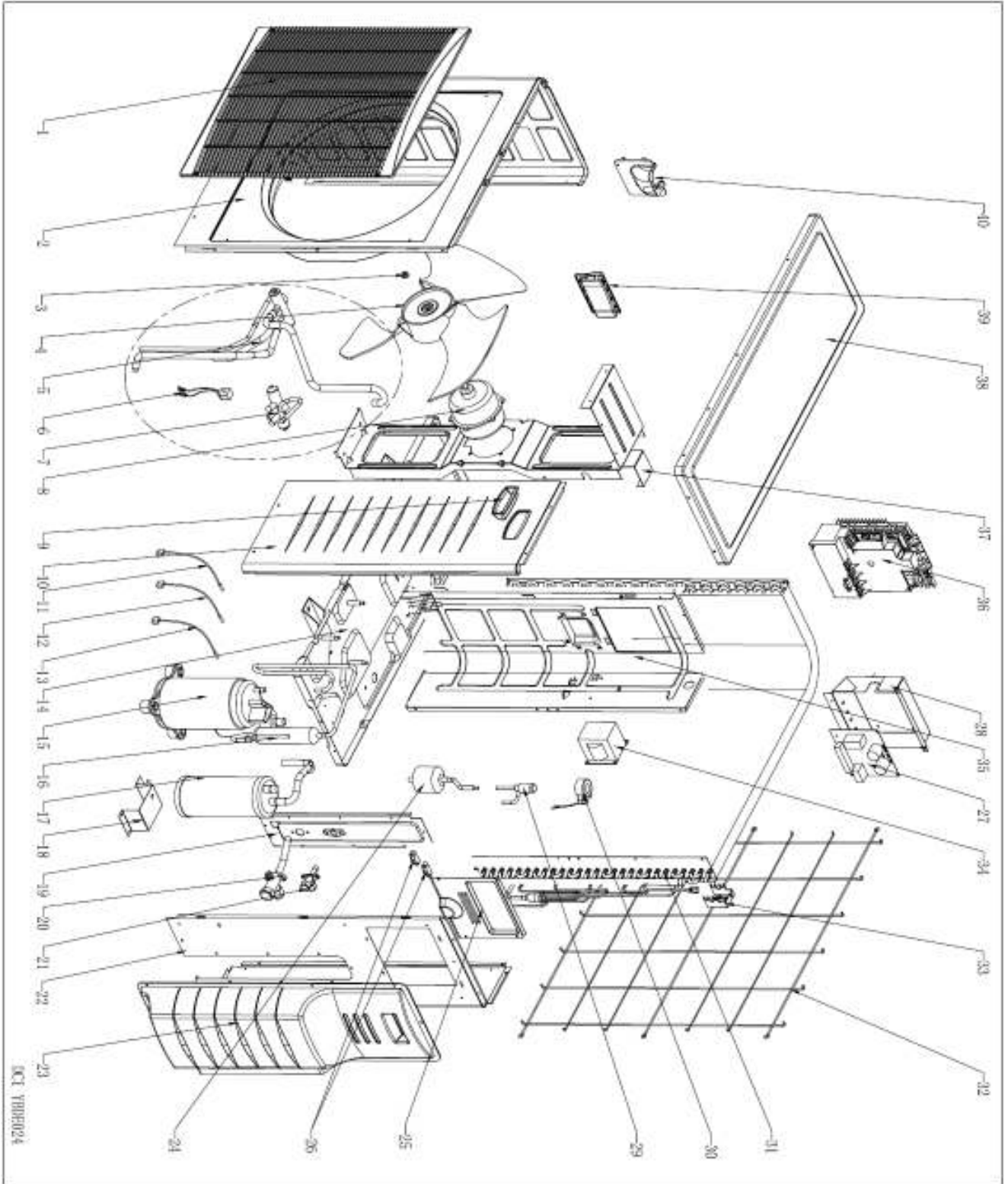
6.9 Exploded view of outdoor unit: YBDE018



6.10 Spare part list of Outdoor Unit: YBDE018

Item	PN	Description	Qty
1	433218	Front Panel A	1
2	4526340	Air inlet ring-420	1
3	4519251	Axial Fan OD=400	1
4	466100034R	Metal Motor /DCR 50 Z	1
5	4527203	Motor Support	1
6	464000032P1	Base Painting Assy. /ONG3/DCI 50 R410A	1
7	464730012	Partition Plate Assy./DCR 50 Z	1
8	461010005	Gas Valve 1/2" R410A	1
9	461000004	Liquid Valve 1/4" R410A)	1
10	467300355R	Controller/DCRS 2.8KW Sine Wave (PS21997) Main BD	1
11	467420025	4 Poles Terminal Block	1
12	204107	Cable clip Nylon	1
13	452823600	Terminal Plate Assy.	1
14	467400200	CTT Compressor Top Temperature Sensor/10K/Resin-capsulation	1
15	461040013	Electronic Expansion Valve DPF(Q)1.65C-63	1
16	461050014	EEV Coil QA(Q)12-HX-03	1
17	469120013	Insulation Felt+PVC/Compressor Panasonic 5RS132	1
18	4510677	Nut With Flange M8 -D=24 GB6187-86	1
19	467000001	Compressor Power Cord/DCR CR 25/35	1
20	460150020R	Compressor Assy./ Panasonic 5RS132ZAD21	1
21	465340080	Valve Cover/PP+UV 5VA/ONG3	1
22	467400056	OCT Outdoor Coil Temperature Sensor/10K	1
23	433226P1	Right side panel /painting plate/DCI 25/35/ONG3	1
24	461600079	4-Way Valve Welding Assy./DCR 50 Z	1
25	461020004	4-W valve /SHF(L)-7H-34U	1
26	461020006	4-W valve /DSF-4-R410A	1
27	467400040	Condenser Middle Temperature Sensor/OAT & OMT/DCR LC 25/35	1
28	433228	Back Side Net	1
29	467550005R	Choke/ DCR 50 Z	1
30	462300127	Condenser Welding Assy./YBD 018	1
31	433231P1	Painting Top Cover/DCI 25/35/ONG3	1
32	4519300	Nut M5 L	1
33	433224P1	Left Side Panel/Painting Plate/DCI 25/35/ONG3	1
34	433225	Handle	1
35	4526298	Bridge	1
36	433223P5	Painting Insulation Plate	1

6.11 Exploded view of outdoor unit: YBDE024



6.12 Spare part list of Outdoor Unit: YBDE024

Item	PN	Description	Qty
1	465100000	Grill/ DCI Trio	1
2	4522593P1	Left front plate/Painting/YBD 024	1
3	4523758	Nut M8 left	1
4	452960400	Outdoor Axial Fan OD=493	1
5	461600055	4-Way Valve Assy./ DCI 80 CR	1
6	461030003	4-Way valve coil/DCI 80 CR	1
7	4526522	FOUR-WAY VALVE (English) R410A	1
8	466110008R	DC Resin Motor(SIC-71FW-F170-1A)/DCI 80 CR	1
9	4522601	Right Handle	1
10	4522594P1	Right front plate/Painting/YBD 024	1
11	467400200	CTT Compressor Top Temperature Sensor/10K	1
12	467400040	Condenser Middle Temperature Sensor/OAT & OMT	1
13	467400038	ODU COIL MIDDLE TEMPERATURE SENSOR/CMV/VRF	1
14	452809800P1	Base Painting Assy. /YBD 024	1
15	460090007R	Compressor Assy./ C-7RZ233H1A (SANYO ShenYang)	1
16	452783600	Oil Separator Assy.	1
17	452783200	Liquid-gas Separator	1
18	452803100P1	Support Painting Support Assy./Gas-Liquid Separator	1
19	4526081P1	Valve plate paint assy./YBD 024	1
20	4526513	LOW PRESS VALVE (R410A)	1
21	4526514	High press valve(R410A)	1
22	464080007P1	Right-Rear Plate/Painting/YBD 024	1
23	465340082	Valve Cover/PP+UV 5VA/GC 30	1
24	4518950	Filter Drier BFK-053S	1
25	464250093	Protecting Plate /controller /DCI 80 CR	1
26	204107	Cable clip Nylon	1
27	467300185R	Filter Board / DCI 80 CR	1
28	464280003	Terminal Plate/ DCI 80 CR	1
29	461040013	Electronic Expansion Valve DPF(Q)1.65C-63	1
30	461050014	EEV Coil QA(Q)12-HX-03	1
31	462300105	Condenser Assy. /DCI80Z R410A	1
32	453174200P1	Guard Net Painting Assy./YBD 024	1
33	453083800	Support/OAT	1
34	467550002R	Choke / DCI 80 CR	1
35	464160023	Partition Plate/DCI 80 CR	1
36	467300184R	Controller / DCI 80 CR OUTDOOR BOX ASSY	1
37	464200026	Motor Support/TRIO DCI/VIESSMANN	1
38	4522597P1	PAINTED TOP COVER ASSY	1
39	4522600	Left Handle	1
40	465120013	Air Outlet Cover/DCI 80 CR R410a	1