

# Airwell



FRENCH BRAND

**Heat pumps,  
Air conditioning  
& Renewable  
energy ranges**

2025/2026  
**RANGE**



*Creating*  
**indoor well-being**



# Airwell

## YOUR FRENCH REFERENCE

*for over 75 years*



**Airwell,**  
**a French thermal**  
**equipment manufacturer**  
**committed to the**  
**energy transition**

### A French referenced brand for professionals

As an expert and creator of climate and thermal solutions, Airwell's mission is to create and cultivate well-being. Airwell is committed to:



#### Reinventing uses

→ To limit our environmental footprint.



#### Optimising consumption

→ To consume less and better.



#### Promoting solar energy

→ To preserve natural resources.

### Historical French manufacturer

- 1947 ● **Creation of the Airwell Group**, the French pioneer in heat pumps.
- 1970 ● Airwell becomes **the leading European** heat pump manufacturer. Leader in Europe and Africa.
- 2008 ● Industrial disengagement and restructuring of the Airwell Group.
- 2014 ● Launch of the **Airwell 2.0** strategic project (the transformation from a heat pump manufacturer to a solution provider).
- 2020 ● Launch of **Hybrid house**, **AirConnect Pro** and **Leezy**.
- 2021 ● **Airwell becomes Airwell Group** following the acquisition of Airwell Residential by Airwell Distribution.
- 2022 ● Integration of the **CSR approach** into the strategy and award of the **"Innovative Company"** label by BPI France. Launch of our Renewable Energy offer.
- 2023 ● Airwell Group acquires Amzair Industrie and sets up its **Airwell Industrie** production site in Brittany to enrich the Group's ecosystem in the design and manufacture of **100% French and connected heat pumps**.
- 2024 ● Opening of new Airwell agencies in the Caribbean.

**GROUPE AIRWELL**



# Airwell ACADEMY

## WHY AIRWELL ACADEMY?

- Technical & qualifying training.
- Training tools: training rooms and training trolley rental service.
- Tailored services: residential and industrial energy audit.

*Airwell supports you in setting up an energy management system that is essential to your business and to the planet.*



### CONTACT US

#### The training centre in Paris, France:

##### Airwell Academy

10, rue du Fort de Saint Cyr  
78180 Montigny-le-Bretonneux, France

#### The training centre in Valence, France:

##### Airwell Academy

66, rue Gilles de Roberval - 26000 Valence,  
France



### THE CENTRES

#### The training space provides:

- An Airwell products showroom
- Several equipped training rooms
- An habilitation room
- A dining area and a kitchen
- An outdoor recreational area
- Private car park



[airwell-academy@airwell.com](mailto:airwell-academy@airwell.com)

**+33 (0)1 76 21 82 22**

or contact your Airwell sales representative

#### Register for the training programme on:

[www.airwell-academy.fr](http://www.airwell-academy.fr)

Discover our new website!

**Qualiopi**  
certified process

**RÉPUBLIQUE FRANÇAISE**  
Quality certification has been awarded  
in the social action category:  
Training action

**HYBRID**  
HOUSE by Airwell



NEW

Stainless steel tanks

### HYDRODUO

Hydraulic module "All-in-1"  
Buffer tank + DHW tank  
+ 1 to 2 zones

CAPACITIES  
200L & 300L

3 versions:  
essential.  
1 or 2 zones

## AIR/WATER range

FLUID  
R290

NEW



### WELLEA M HT

Monoblock heat pump  
Water temperature  
up to 75°C

COOLING  
4.50 to  
16.00 kW

HEATING  
4.50 to  
15.00 kW

FLUID  
R290

FLUID  
R290

NEW



### WELLEA M DF HT

Monoblock heat pump  
Water temperature  
up to 85°C

COOLING  
26.00 to  
39.00 kW

HEATING  
26.00 to  
39.00 kW

FLUID  
R290



316L stainless steel tank



### WELLEA WT MT

Split heat pump with DHW tank included

COOLING  
4.70 to  
14.90 kW

HEATING  
4.25 to  
16.00 kW

FLUID  
R32



### WELLEA S MT

Split heat pump

COOLING  
4.70 to  
14.00 kW

HEATING  
4.25 to  
16.00 kW

FLUID  
R32



### WELLEA M DF MT

Monoblock heat pump

COOLING  
17.00 to  
29.50 kW

HEATING  
18.30 to  
29.93 kW

FLUID  
R32



Stainless steel tank



### ELEO M

Monoblock thermodynamic water heater

CAPACITIES  
120L & 190L

FLUID  
R134A



FLUID  
R290

NEW

316L stainless steel tank



### ELEO M TFHA

Monoblock thermodynamic water heater

CAPACITIES  
200L & 300L

FLUID  
R290



**HYBRID**  
HOUSE by Airwell

## AIR/AIR range

HEAT PUMPS R32 UNTIL 65°C

NEW FOR 2026



### HDMC

High wall monosplit & multisplit  
High performance & energy efficiency (-25°C)

COOLING 2.60 to 6.10 kW  
HEATING 2.90 to 7.30 kW  
FLUID R32



### HDMB Harmonia

High wall monosplit & multisplit

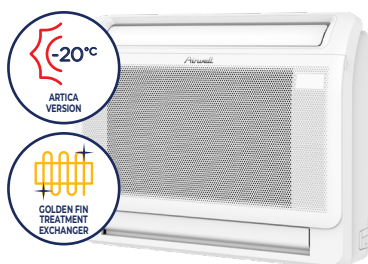
COOLING 2.64 to 7.03 kW  
HEATING 2.92 to 7.33 kW  
FLUID R32



### HDLA AURA

High wall monosplit & multisplit

COOLING 2.05 to 7.03 kW  
HEATING 2.34 to 7.33 kW  
FLUID R32



### XDMX

Dual-flow console monosplit & multisplit

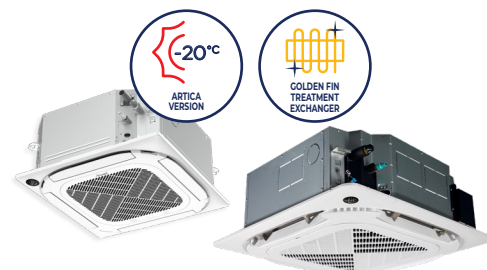
COOLING 3.52 to 4.98 kW  
HEATING 3.81 to 5.28 kW  
FLUID R32



### FDMX

Floor ceiling monosplit & multisplit

COOLING 5.28 to 15.83 kW  
HEATING 5.57 to 18.17 kW  
FLUID R32



### CDMD NEW /CDMX

360° cassette monosplit & multisplit

COOLING 2.21 to 14.07 kW  
HEATING 2.20 to 16.12 kW  
FLUID R32



### ZDAB

Residential multisplit duo/trio  
High performance

COOLING 5.30 to 7.90 kW  
HEATING 5.30 to 8.20 kW  
FLUID R32



### ZDAA

Residential multisplit duo/trio/quattro/cinco

COOLING 4.10 to 12.31 kW  
HEATING 4.40 to 12.31 kW  
FLUID R32

#### COATING TREATMENT OF HEAT-EXCHANGERS



BLACK FIN TREATMENT EXCHANGER



Ultra-reinforced coating treatment against humidity and salinity



GREEN FIN TREATMENT EXCHANGER



Reinforced treatment against aggressive environments



GOLDEN FIN TREATMENT EXCHANGER



Reinforced treatment against corrosion



BLUE FIN TREATMENT EXCHANGER



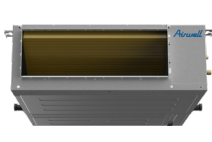
Hydrophilic treatment against corrosion

## DUCTED



VERTICAL MOUNTING

HORIZONTAL MOUNTING



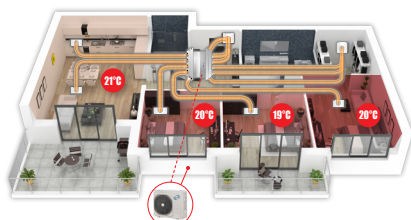
**DDMD** **NEW**

Ducted monosplit & multisplit

COOLING  
2.64 to  
15.24 kW

HEATING  
2.93 to  
18.18 kW

FLUID  
**R32**



**WELLZONE**

Multi-zone system monosplit

**Zone control:** the ideal temperature in each room (up to 6 zones).

## FLOOR CEILING



**FDLK**

Low-temperature floor ceiling monosplit

COOLING  
5.30 to  
7.00 kW

FLUID  
**R32**



**SDMX**

Floor standing Inverter monosplit

COOLING  
14.07 kW

HEATING  
16.12 kW

FLUID  
**R32**

## MONOBLOCK

100% INDOOR SOLUTIONS



**XDAW**

Monoblock console

COOLING  
2.35 kW

HEATING  
2.36 kW

FLUID  
**R32**



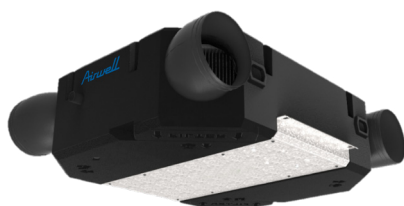
**WFAE**

Window - DC Inverter

COOLING  
2.75 and  
3.70 kW

FLUID  
**R32**

## VENTILATION



**JDAA AIRFLOW**

Thermodynamic dual-flow CMV

Airflow from 125 to 320 m³/h

COOLING  
1.57 to  
2.07 kW

HEATING  
1.42 to  
2.49 kW

FLUID  
**R32**

## WATER/WATER range



100% DESIGNED AND MANUFACTURED IN FRANCE IN BREST



**NEW**

**TÉRÉO**

Brine-to-water heat pump  
Geothermal solution

COOLING  
Sizes  
13 & 16"

HEATING  
Sizes  
7 to 16"

FLUID  
**R407C**

\* In reversible versions



**NEW**

**HYDRODUO TÉRÉO**

Hydraulic module  
"All in 1"

Buffer + DHW + 1 to 2 zones

**Stainless steel tank**

CAPACITIES  
200L & 300L

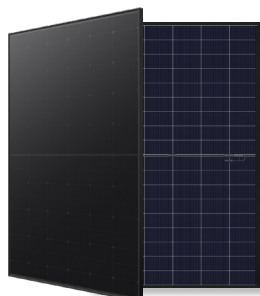
2 versions:  
1 or 2 zones



## SOLAR range

**AirSolar**  
SOLUTIONS  
AN AIRWELL GROUP BRAND

**HYBRID**  
HOUSE by Airwell



### Solar panels

TopCon & Back Contact technologies  
450-500 Wp



### Fixing systems

Tile, slate, steel roofing, fibre cement and flat roof/floor



### PV protection boxes\*

Single-phase and three-phase up to 9 kWp and 12 kVA

\* Compliant with NF C15-100



### Complete PV kits

from 1 to 9 kWp\*, single-phase and three-phase

\* and more on request



### Micro-inverters Wi-Fi

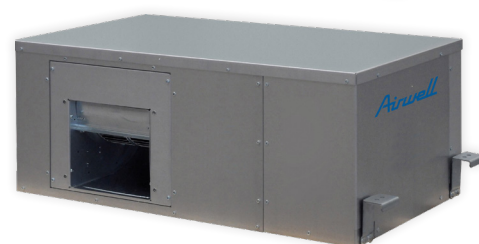
1000 VA, with cabling accessories



### Battery kits + hybrid inverters

from 3 to 6 kVA, 5 kWh per battery

## WATER-COOLED range

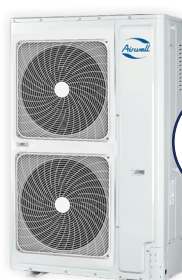


### DFMO

### Water-loop heat pump

COOLING 2.26 to 25.00 kW HEATING 2.76 to 33.20 kW FLUID R410A

## VRF range



### VFA 2-pipes Front discharge

COOLING 12.10 to 31.50 kW HEATING 14.20 to 31.50 kW FLUID R410A



### VTA 2-pipes Continuous heating

COOLING 25.20 to 294 kW HEATING 25.20 to 294 kW FLUID R410A



### VEA 3-pipes Energy recovery

COOLING 122.40 to 246 kW HEATING 22.40 to 246 kW FLUID R410A

### VRF indoor units:



High wall



Cassette



Ducted



Console



Floor ceiling



AHU connection kit



## AFTER-SALES AND QUALITY SERVICE

**+33 (0)1 76 21 82 95**

*Monday to Friday 9 am-1230 pm / 2 pm-5 pm*

### TECHNICAL SUPPORT

**[sav@airwell.com](mailto:sav@airwell.com)**



**Airwell**  
ACADEMY  
YOUR TRAINING  
CONTACT

**+33 (0)1 76 21 82 22**

**[airwell-academy@airwell.com](mailto:airwell-academy@airwell.com)**

# GROUPE AIRWELL

10, rue du Fort de Saint-Cyr - 78180 Montigny-le-Bretonneux, FRANCE

Tel: +33 (0)1 76 21 82 00 - **[www.airwell.com](http://www.airwell.com)**

Printed in France