

Airwell



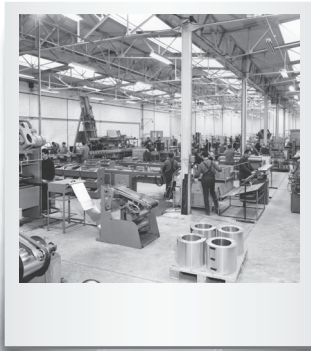
**Heat pumps, Air conditioning
& Renewable energy ranges**
2024/2025



Airwell

YOUR FRENCH REFERENCE

for over 75 years



Airwell, a French thermal equipment manufacturer committed to the energy transition

A French referenced brand for professionals

As an expert and creator of climate and thermal solutions, Airwell's mission is to create and cultivate well-being. Airwell is committed to:



Reinventing uses

→ To limit our environmental footprint.



Optimising consumption

→ To consume less and better.



Promoting solar energy

→ To preserve natural resources.

Historical French manufacturer

- 1947 ● **Creation of the Airwell Group**, the French pioneer in heat pumps.
- 1970 ● Airwell becomes **the leading European** heat pump manufacturer. Leader in Europe and Africa.
- 2008 ● Industrial disengagement and restructuring of the Airwell Group.
- 2014 ● Launch of the **Airwell 2.0** strategic project (the transformation from a heat pump manufacturer to a solution provider).
- 2020 ● Launch of **Hybrid house**, **AirConnect Pro** and **Leezy**.
- 2021 ● **Airwell becomes Airwell Group** following the acquisition of Airwell Residential by Airwell Distribution.
- 2022 ● Integration of the **CSR approach** into the strategy and award of the **"Innovative Company"** label by BPI France. Launch of our Renewable Energy offer.
- 2023 ● Airwell Group acquires Amzair Industrie and sets up its **Airwell Industrie** production site in Brittany to enrich the Group's ecosystem in the design and manufacture of **100% French and connected heat pumps**.

GROUPE AIRWELL



Airwell

ACADEMY

WHY AIRWELL ACADEMY?

- ▶ Technical & qualifying training.
- ▶ Training tools: training rooms and training trolley rental service.
- ▶ Tailored services: residential and industrial energy audit.

Airwell supports you in setting up an energy management system that is essential to your business and to the planet.



CONTACT US

The training centre in Paris, France: Airwell Academy

10, rue du Fort de Saint Cyr
78180 Montigny-le-Bretonneux, France

This center is specialized in energy engineering field retraining.

The training centre in Valence, France: Airwell Academy

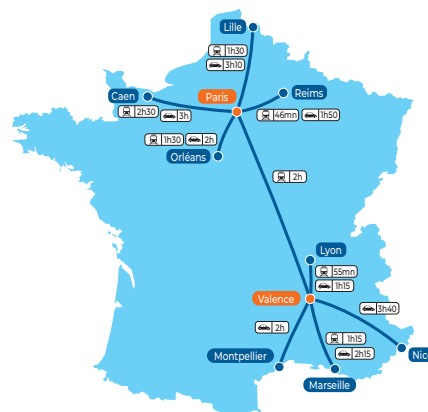
66, rue Gilles de Roberval - 26000 Valence, France



THE CENTRES

The training space provides:

- An Airwell products showroom
- Several equipped training rooms
- An habilitation room
- A dining area and a kitchen
- An outdoor recreational area
- Private car park



airwell-academy@airwell.com

+33 (0)1 76 21 82 22

or contact your Airwell sales representative

Register for the training programme on:

www.airwell-academy.fr

Discover our new website!

Qualiopi
certified process

REPUBLIQUE FRANÇAISE

Quality certification has been awarded in the social action category:
Training action



AIR/WATER range



NEW

WELLEA M HT

Monoblock heat pump with natural R290 fluid

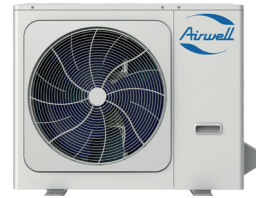


Stainless steel tank



WELLEA WT MT

Triple-service split heat pump



WELLEA S MT

Split heat pump



WELLEA M MT

Monoblock heat pump



WELLEA M MT

Monoblock heat pump



NEW

Stainless steel tank



AMZÉO WT

Monoblock heat pump 100% indoor



Stainless steel tank

ELEO S

Split thermodynamic water heater



Stainless steel tank

ELEO M

Monoblock thermodynamic water heater

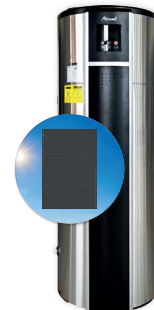


NEW

Stainless steel tank

ELEO M TFMW

Chauffe-eau thermodynamique monobloc



Stainless steel tank

ELEO MS

Solar thermodynamic water heater





AIR/AIR range



HDHC Artica

High wall monosplit & multisplit
High efficiency & Energetic efficiency

COOLING 2.73 to 7.03 kW HEATING 3.14 to 7.33 kW FLUID R32



HDMB Harmonia Colour range

High wall monosplit & multisplit

COOLING 2.64 to 7.03 kW HEATING 2.92 to 7.33 kW FLUID R32



HDLE Aura

High wall monosplit & multisplit - Built-in Wi-Fi

COOLING 2.20 to 6.20 kW HEATING 2.40 to 6.50 kW FLUID R32



ZDAA

Residential multisplit duo/trio/quattro/cinco

COOLING 4.10 to 12.31 kW HEATING 4.40 to 12.31 kW FLUID R32



ZDAE

Residential multisplit duo/trio/quattro/cinco

COOLING 4.10 to 12 kW HEATING 4.40 to 13 kW FLUID R32



XDLE

Dual-flow console monosplit & multisplit

COOLING 2.70 to 5.20 kW HEATING 2.90 to 5.33 kW FLUID R32



XDMX

Dual-flow console monosplit & multisplit

COOLING 3.52 to 4.98 kW HEATING 3.81 to 5.28 kW FLUID R32



FDMX

Floor ceiling monosplit & multisplit

COOLING 5.28 to 15.83 kW HEATING 5.57 to 18.17 kW FLUID R32



FDLK

Low-temperature floor ceiling monosplit

COOLING 5.30 to 7.00 kW FLUID R32



SDMX

Floor standing Inverter monosplit

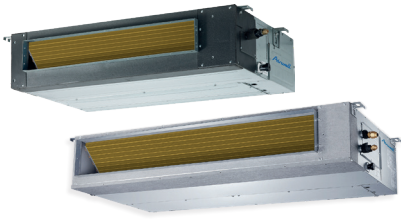
COOLING 14.07 kW HEATING 16.12 kW FLUID R32



JDAA AIRFLOW

Thermodynamic dual-flow CMV
Airflow from 125 to 320 m³/h

COOLING 0.92 to 2.07 kW HEATING 1.42 to 2.49 kW FLUID R32



DDMX
Ducted monosplit & multisplit

COOLING 2.05 to 15.24 kW
HEATING 2.34 to 18.17 kW
FLUID R32

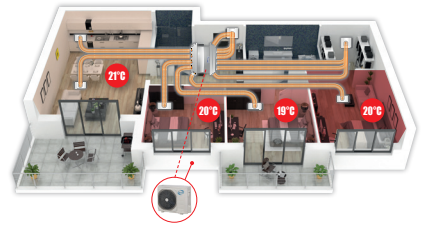
POSE VERTICALE

POSE HORIZONTALE



DDMD **NEW**
Ducted monosplit & multisplit

COOLING 3.52 to 15.24 kW
HEATING 3.81 to 18.18 kW
FLUID R32



WELLZONE
Zone-by-zone regulation monosplit & multisplit

Zone control: the ideal temperature in each room (up to 6 zones).



CDMD **NEW** /**CDMX**
360° cassette monosplit & multisplit

COOLING 2.05 to 14.07 kW
HEATING 2.35 to 16.12 kW
FLUID R32



XDAW
Monoblock console

COOLING 2.35 kW
HEATING 2.36 kW
FLUID R32



WFAE
Window - DC Inverter

COOLING 2.75 and 3.70 kW
FLUID R32



MFH
Portable - Cooling only

COOLING 2.93 and 3.52 kW
FLUID R290

WATER/WATER
range



NEW



TÉRÉO-A
Brine-to-water heat pump
Geothermal solution

COOLING 7 to 26 kW
HEATING 7 to 26 kW
FLUID R407C

SOLAR range

AirSolar
SOLUTIONS



PV modules
450 and 500 Wc



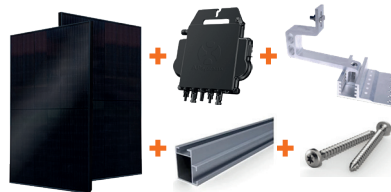
Electrical boxes
Up to 6.00 kW single phase
and up to 9.00 kW three-phase



Micro-inverters and wiring accessories
880 VA / 960 W / 2000 W



Fixing systems
Tile, slate, steel roofing,
fibre cement and flat roof/floor



Photovoltaic kits
From 0.75 to 9.00 kWc*
* and more on request

WATER-COOLED range



XDOW
Water-cooled console

COOLING 2.50 to 3.50 kW
 HEATING 2.70 to 3.80 kW
 FLUID R410A



DFMO
Water-loop heat pump

COOLING 2.26 to 25.00 kW
 HEATING 2.76 to 33.20 kW
 FLUID R410A

VRF range



VVFA 2-pipes
Front discharge

COOLING 12.10 to 31.50 kW
 HEATING 14.20 to 31.50 kW
 FLUID R410A



VVTA 2-pipes
Top discharge

COOLING 25.20 to 294 kW
 HEATING 25.20 to 294 kW
 FLUID R410A



VVEA 3-pipes
Top discharge

COOLING 122.40 to 246 kW
 HEATING 22.40 to 246 kW
 FLUID R410A

AIRWELL, MAIN PARTNER OF
THE **STADE FRANÇAIS PARIS**

Airwell



A COMMITTED PARTNERSHIP

Airwell, a French player committed to the energy transition, has chosen Stade Français Rugby for its first sports partnership, to represent their common values, in particular in terms of the ecological and environmental transitions.



**AFTER-SALES AND
QUALITY SERVICE**

+33 (0)1 76 21 82 95

Monday to Friday 9 am-1230 pm / 2 pm-5 pm

TECHNICAL SUPPORT

sav@airwell.com

GROUPE AIRWELL

10, rue du Fort de Saint-Cyr - 78180 Montigny-le-Bretonneux, FRANCE

Tel: +33 (0)1 76 21 82 00 - www.airwell.com

Printed in France