

# Airwell



FRENCH BRAND

**Heat pumps,  
Air conditioning  
& Renewable  
energy ranges**

2025/2026  
**RANGE**



*Creating*  
**indoor well-being**



# Airwell

## YOUR FRENCH REFERENCE

*for over 75 years*



**Airwell,**  
**a French thermal**  
**equipment manufacturer**  
**committed to the**  
**energy transition**

### A French referenced brand for professionals

As an expert and creator of climate and thermal solutions, Airwell's mission is to create and cultivate well-being. Airwell is committed to:



#### Reinventing uses

→ To limit our environmental footprint.



#### Optimising consumption

→ To consume less and better.



#### Promoting solar energy

→ To preserve natural resources.

### Historical French manufacturer

- 1947 ● **Creation of the Airwell Group**, the French pioneer in heat pumps.
- 1970 ● Airwell becomes **the leading European** heat pump manufacturer. Leader in Europe and Africa.
- 2008 ● Industrial disengagement and restructuring of the Airwell Group.
- 2014 ● Launch of the **Airwell 2.0** strategic project (the transformation from a heat pump manufacturer to a solution provider).
- 2020 ● Launch of **Hybrid house**, **AirConnect Pro** and **Leezy**.
- 2021 ● **Airwell becomes Airwell Group** following the acquisition of Airwell Residential by Airwell Distribution.
- 2022 ● Integration of the **CSR approach** into the strategy and award of the **"Innovative Company"** label by BPI France. Launch of our Renewable Energy offer.
- 2023 ● Airwell Group acquires Amzair Industrie and sets up its **Airwell Industrie** production site in Brittany to enrich the Group's ecosystem in the design and manufacture of **100% French and connected heat pumps**.
- 2024 ● Opening of new Airwell agencies in the Caribbean.

**GROUPE AIRWELL**



# Airwell ACADEMY

## WHY AIRWELL ACADEMY?

- Technical & qualifying training.
- Training tools: training rooms and training trolley rental service.
- Tailored services: residential and industrial energy audit.

*Airwell supports you in setting up an energy management system that is essential to your business and to the planet.*



### CONTACT US

#### The training centre in Paris, France:

##### Airwell Academy

10, rue du Fort de Saint Cyr  
78180 Montigny-le-Bretonneux, France

#### The training centre in Valence, France:

##### Airwell Academy

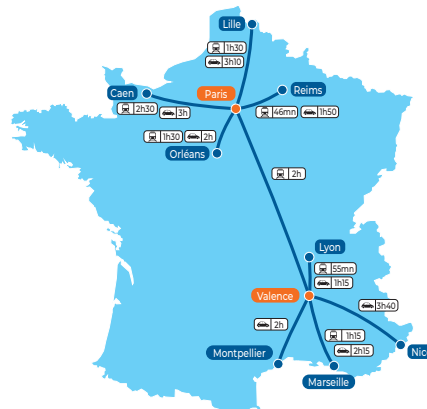
66, rue Gilles de Roberval - 26000 Valence,  
France



### THE CENTRES

#### The training space provides:

- An Airwell products showroom
- Several equipped training rooms
- An habilitation room
- A dining area and a kitchen
- An outdoor recreational area
- Private car park



[airwell-academy@airwell.com](mailto:airwell-academy@airwell.com)

**+33 (0)1 76 21 82 22**

or contact your Airwell sales representative

#### Register for the training programme on:

[www.airwell-academy.fr](http://www.airwell-academy.fr)

Discover our new website!

**Qualiopi**  
certified process

**RÉPUBLIQUE FRANÇAISE**  
Quality certification has been awarded  
in the social action category:  
Training action



## AIR/WATER range



NEW

Stainless steel tanks

### HYDRODUO

Hydraulic module "All-in-1"  
Buffer tank + DHW tank  
+ 1 to 2 zones



FLUID  
R290

NEW

### WELLEA M HT

Monoblock heat pump  
Water temperature  
up to 75°C



FLUID  
R290

NEW



### WELLEA M DF HT

Monoblock heat pump  
Water temperature  
up to 85°C



Stainless steel tanks



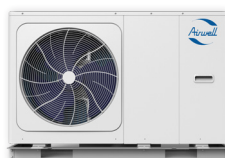
### WELLEA WT MT

Split heat pump  
with DHW tank  
included



### WELLEA S MT

Split heat pump



### WELLEA M MT

Monoblock  
heat pump



### WELLEA M DF MT

Monoblock  
heat pump



Stainless steel tank

### ELEO M

Monoblock thermodynamic  
water heater

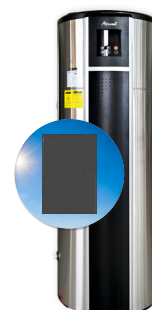


NEW\*

Stainless steel tank

### ELEO M TFHA

Monoblock thermodynamic  
water heater



Stainless steel tank

### ELEO MS

Solar thermodynamic  
water heater







## AIR/AIR range



**HDHC Artica**  
High wall monosplit & multisplit - High efficiency & Energetic efficiency

COOLING 2.73 to 7.03 kW  
HEATING 3.14 to 7.33 kW  
FLUID R32



**HDMB Harmonia**  
**Colour range**  
High wall monosplit & multisplit

COOLING 2.64 to 7.03 kW  
HEATING 2.92 to 7.33 kW  
FLUID R32



**HDLE AURA**  
High wall monosplit & multisplit - Built-in Wi-Fi

COOLING 2.20 to 6.20 kW  
HEATING 2.40 to 6.50 kW  
FLUID R32



**XDMX**  
Dual-flow console monosplit & multisplit

COOLING 3.52 to 4.98 kW  
HEATING 3.81 to 5.28 kW  
FLUID R32



**FDMX**  
Floor ceiling monosplit & multisplit

COOLING 5.28 to 15.83 kW  
HEATING 5.57 to 18.17 kW  
FLUID R32



**XDLF**  
Dual-flow console monosplit & multisplit

COOLING 2.70 to 5.20 kW  
HEATING 2.90 to 5.33 kW  
FLUID R32



**ZDAB**  
Residential multisplit duo/trio  
High performance

COOLING 5.3 to 7.9 kW  
HEATING 5.3 to 8.2 kW  
FLUID R32



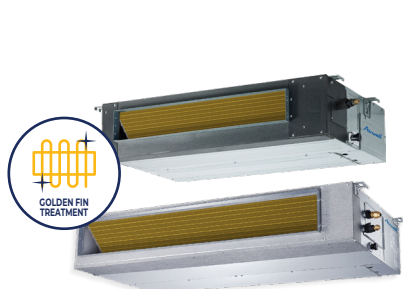
**ZDAA**  
Residential multisplit duo/trio/quattro/cinco

COOLING 4.10 to 12.31 kW  
HEATING 4.40 to 12.31 kW  
FLUID R32



**ZDAE**  
Residential multisplit duo/trio/quattro/cinco

COOLING 4.10 to 12 kW  
HEATING 4.40 to 13 kW  
FLUID R32



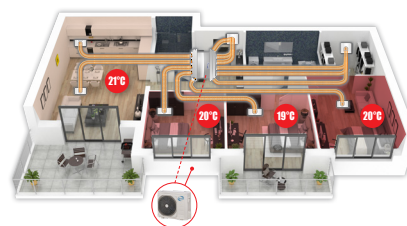
**DDMX**  
Ducted  
monosplit & multisplit

COOLING 2.05 to 15.24 kW  
HEATING 2.34 to 18.17 kW  
FLUID R32



**DDMD** **NEW**  
Ducted  
monosplit & multisplit

COOLING 3.52 to 15.24 kW  
HEATING 3.81 to 18.18 kW  
FLUID R32



**WELLZONE**  
Multi-zone system  
monosplit

**Zone control:** the ideal temperature in each room (up to 6 zones).



**CDMD** **NEW** / **CDMX**  
360° cassette  
monosplit & multisplit

COOLING 2.05 to 14.07 kW  
HEATING 2.35 to 16.12 kW  
FLUID R32



**FDLK**  
Low-temperature floor  
ceiling monosplit

COOLING 5.30 to 7.00 kW  
FLUID R32



**SDMX**  
Floor standing  
Inverter  
monosplit

COOLING 14.07 kW  
HEATING 16.12 kW  
FLUID R32



**JDAA AIRFLOW**  
Thermodynamic  
dual-flow CMV  
Airflow from 125 to 320 m<sup>3</sup>/h

COOLING 0.92 to 2.07 kW  
HEATING 1.42 to 2.49 kW  
FLUID R32



**XDAW**  
Monoblock console

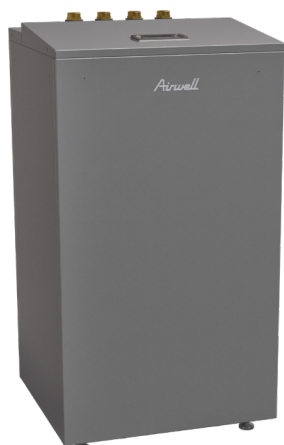
COOLING 2.35 kW  
HEATING 2.36 kW  
FLUID R32

**100% INDOOR SOLUTION**



**WFAE**  
Window - DC Inverter

COOLING 2.75 and 3.70 kW  
FLUID R32



## WATER/WATER range

**NEW \***

**TÉRÉO**  
Brine-to-water heat pump  
Geothermal solution

COOLING Sizes 13 & 16"  
HEATING Sizes 7 to 16  
FLUID R407C

\* 2nd semester 2025 \*\* In reversible versions



100% DESIGNED AND MANUFACTURED  
IN FRANCE IN BREST

### COATING TREATMENT OF HEAT-EXCHANGERS

**BLACK FIN TREATMENT** Ultra-reinforced coating treatment against humidity and salinity

**GREEN FIN TREATMENT** Reinforced treatment against aggressive environments

**GOLDEN FIN TREATMENT** Reinforced treatment against corrosion

**BLUE FIN TREATMENT** Hydrophilic treatment against corrosion



## SOLAR range

**AirSolar**  
SOLUTIONS  
AN AIRWELL GROUP BRAND

**HYBRID**  
HOUSE by Airwell



**PV modules**  
450 and 500 Wc



**Electrical boxes**  
Up to 9 kW single  
phase and up to 9 kW  
three-phase



**Micro-inverters  
and wiring  
accessories**  
880 VA/960 W/2000 W



**Fixing systems**  
Tile, slate, steel roofing,  
fibre cement and flat  
roof/floor



**Photovoltaic kits**  
From 1 to 9.00 kWc\*  
\* and more on request



**Battery kits**  
5 kVA single-phase and  
12 kVA three-phase

## WATER-COOLED range



**XDOW**  
Water-cooled console

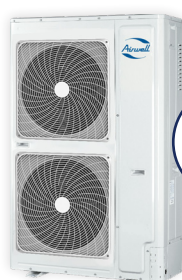
COOLING 2.50 to 3.50 kW HEATING 2.70 to 3.80 kW FLUID R410A



**DFMO**  
Water-loop heat pump

COOLING 2.26 to 25.00 kW HEATING 2.76 to 33.20 kW FLUID R410A

## VRF range



**VVFA 2-pipes**  
Front discharge

COOLING 12.10 to 31.50 kW HEATING 14.20 to 31.50 kW FLUID R410A



**VVTA 2-pipes**  
Continuous heating

COOLING 25.20 to 294 kW HEATING 25.20 to 294 kW FLUID R410A



**VVEA 3-pipes**  
Energy recovery

COOLING 122.40 to 246 kW HEATING 22.40 to 246 kW FLUID R410A

### VRF indoor units:



High wall



Cassette



Ducted



Console



Floor ceiling



AHU connection kit



## AFTER-SALES AND QUALITY SERVICE

**+33 (0)1 76 21 82 95**

Monday to Friday 9 am-1230 pm / 2 pm-5 pm

### TECHNICAL SUPPORT

**sav@airwell.com**



**Airwell**  
ACADEMY  
YOUR TRAINING  
CONTACT

**+33 (0)1 76 21 82 22**

**airwell-academy@airwell.com**

# GROUPE **AIRWELL**

10, rue du Fort de Saint-Cyr - 78180 Montigny-le-Bretonneux, FRANCE

Tel: +33 (0)1 76 21 82 00 - [www.airwell.com](http://www.airwell.com)

Printed in France