

Airwell



FRENCH BRAND

**Heat pumps,
Air conditioning
& Renewable
energy ranges**

2025/2026
RANGE



Creating
indoor well-being

Airwell

YOUR FRENCH REFERENCE

for over 75 years



Airwell,
a French thermal
equipment manufacturer
committed to the
energy transition

A French referenced brand for professionals

As an expert and creator of climate and thermal solutions, Airwell's mission is to create and cultivate well-being. Airwell is committed to:



Reinventing uses

→ To limit our environmental footprint.



Optimising consumption

→ To consume less and better.



Promoting solar energy

→ To preserve natural resources.

Historical French manufacturer

- 1947 ● **Creation of the Airwell Group**, the French pioneer in heat pumps.
- 1970 ● Airwell becomes **the leading European** heat pump manufacturer. Leader in Europe and Africa.
- 2008 ● Industrial disengagement and restructuring of the Airwell Group.
- 2014 ● Launch of the **Airwell 2.0** strategic project (the transformation from a heat pump manufacturer to a solution provider).
- 2020 ● Launch of **Hybrid house**, **AirConnect Pro** and **Leezy**.
- 2021 ● **Airwell becomes Airwell Group** following the acquisition of Airwell Residential by Airwell Distribution.
- 2022 ● Integration of the **CSR approach** into the strategy and award of the **"Innovative Company"** label by BPI France. Launch of our Renewable Energy offer.
- 2023 ● Airwell Group acquires Amzair Industrie and sets up its **Airwell Industrie** production site in Brittany to enrich the Group's ecosystem in the design and manufacture of **100% French and connected heat pumps**.
- 2024 ● Opening of new Airwell agencies in the Caribbean.

GROUPE AIRWELL



Airwell

ACADEMY

WHY AIRWELL ACADEMY?

- Technical & qualifying training.
- Training tools: training rooms and training trolley rental service.
- Tailored services: residential and industrial energy audit.

Airwell supports you in setting up an energy management system that is essential to your business and to the planet.



CONTACT US

The training centre in Paris, France:

Airwell Academy

10, rue du Fort de Saint Cyr
78180 Montigny-le-Bretonneux, France

The training centre in Valence, France:

Airwell Academy

66, rue Gilles de Roberval - 26000 Valence,
France



THE CENTRES

The training space provides:

- An Airwell products showroom
- Several equipped training rooms
- An habilitation room
- A dining area and a kitchen
- An outdoor recreational area
- Private car park



airwell-academy@airwell.com

+33 (0)1 76 21 82 22

or contact your Airwell sales representative

Register for the training programme on:

www.airwell-academy.fr

Discover our new website!

Qualiopi
certified process

REPUBLIQUE FRANÇAISE

Quality certification has been awarded
in the social action category:
Training action

HYBRID
HOUSE by Airwell



NEW

Stainless steel tanks

HYDRODUO

Hydraulic module "All-in-1"
Buffer tank + DHW tank
+ 1 to 2 zones

CAPACITIES
200L & 300L

3 versions:
essential.
1 or 2 zones

AIR/WATER range

FLUID
R290

NEW



WELLEA M HT

Monoblock heat pump
Water temperature
up to 75°C

COOLING
4.50 to
16.00 kW

HEATING
4.50 to
15.90 kW

FLUID
R290

FLUID
R290

NEW



WELLEA M DF HT

Monoblock heat pump
Water temperature
up to 85°C

COOLING
26.00 to
39.00 kW

HEATING
26.00 to
39.00 kW

FLUID
R290



Stainless steel tanks



WELLEA WT MT

Split heat pump
with DHW tank
included

COOLING
4.50 to
14.90 kW

HEATING
4.25 to
16.00 kW

FLUID
R32



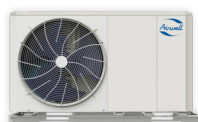
WELLEA S MT

Split heat pump

COOLING
4.50 to
14.90 kW

HEATING
4.25 to
16.00 kW

FLUID
R32



WELLEA M MT

Monoblock
heat pump

COOLING
4.50 to
14.90 kW

HEATING
4.20 to
16.00 kW

FLUID
R32



WELLEA M DF MT

Monoblock
heat pump

COOLING
18.50 to
31.00 kW

HEATING
18.30 to
29.93 kW

FLUID
R32



Stainless steel tank

ELEO M

Monoblock thermodynamic
water heater

CAPACITIES
120L, 190L
& 260L

FLUID
R134A



NEW*

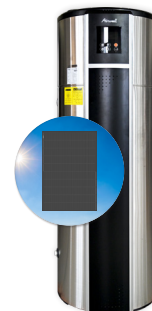
Stainless steel tank

ELEO M TFHA

Monoblock thermodynamic
water heater

CAPACITIES
200L & 300L

FLUID
R290



Stainless steel tank

ELEO MS

Solar thermodynamic
water heater

CAPACITIES
190L & 300L

FLUID
R134A



AIR/AIR range



HDHC Artica
High wall monosplit & multisplit - High efficiency & Energetic efficiency

COOLING 2.73 to 7.03 kW
HEATING 3.14 to 7.33 kW
FLUID R32



HDMB Harmonia
Colour range
High wall monosplit & multisplit

COOLING 2.64 to 7.03 kW
HEATING 2.92 to 7.33 kW
FLUID R32



HDLE AURA
High wall monosplit & multisplit - Built-in Wi-Fi

COOLING 2.20 to 6.20 kW
HEATING 2.40 to 6.50 kW
FLUID R32



XDMX
Dual-flow console monosplit & multisplit

COOLING 3.52 to 4.98 kW
HEATING 3.81 to 5.28 kW
FLUID R32



FDMX
Floor ceiling monosplit & multisplit

COOLING 5.28 to 15.83 kW
HEATING 5.57 to 18.17 kW
FLUID R32



XDLF
Dual-flow console monosplit & multisplit

COOLING 2.70 to 5.20 kW
HEATING 2.90 to 5.33 kW
FLUID R32



ZDAB
Residential multisplit duo/trio
High performance

COOLING 5.3 to 7.9 kW
HEATING 5.3 to 8.2 kW
FLUID R32



ZDAA
Residential multisplit duo/trio/quattro/cinco

COOLING 4.10 to 12.31 kW
HEATING 4.40 to 12.31 kW
FLUID R32



ZDAE
Residential multisplit duo/trio/quattro/cinco

COOLING 4.10 to 12 kW
HEATING 4.40 to 13 kW
FLUID R32



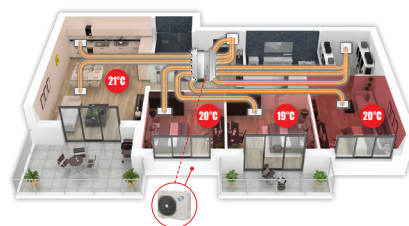
DDMX
Ducted
monosplit & multisplit

COOLING 2.05 to 15.24 kW
HEATING 2.34 to 18.17 kW
FLUID R32



DDMD **NEW**
Ducted
monosplit & multisplit

COOLING 3.52 to 15.24 kW
HEATING 3.81 to 18.18 kW
FLUID R32



WELLZONE
Multi-zone system
monosplit

Zone control: the ideal
temperature in each room
(up to 6 zones).



CDMD **NEW** /CDMX
360° cassette
monosplit & multisplit

COOLING 2.05 to 14.07 kW
HEATING 2.35 to 16.12 kW
FLUID R32



FDLK
Low-temperature floor
ceiling monosplit

COOLING 5.30 to 7.00 kW
FLUID R32



SDMX
Floor standing
Inverter
monosplit

COOLING 14.07 kW
HEATING 16.12 kW
FLUID R32



JDAA AIRFLOW
Thermodynamic
dual-flow CMV
Airflow from 125 to 320 m³/h

COOLING 0.92 to 2.07 kW
HEATING 1.42 to 2.49 kW
FLUID R32



XDAW
Monoblock console

COOLING 2.35 kW
HEATING 2.36 kW
FLUID R32



WFAE
Window - DC Inverter

COOLING 2.75 and 3.70 kW
FLUID R32



WATER/WATER range

NEW *

TÉRÉO
Brine-to-water heat pump
Geothermal solution

COOLING Sizes 13 & 16"
HEATING Sizes 7 to 16
FLUID R407C

* 2nd semester 2025 ** In reversible versions



100% DESIGNED AND MANUFACTURED
IN FRANCE IN BREST

COATING TREATMENT OF HEAT-EXCHANGERS



**BLACK FIN
TREATMENT**

Ultra-reinforced coating treatment
against humidity and salinity



**GREEN FIN
TREATMENT**

Reinforced treatment against
aggressive environments



**GOLDEN FIN
TREATMENT**

Reinforced treatment
against corrosion



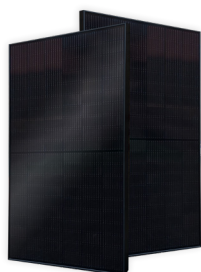
**BLUE FIN
TREATMENT**

Hydrophilic treatment
against corrosion

SOLAR range

AirSolar
SOLUTIONS
AN AIRWELL GROUP BRAND

HYBRID
HOUSE by Airwell



PV modules
450 and 500 Wc



Electrical boxes
Up to 9 kW single
phase and up to 9 kW
three-phase



**Micro-inverters
and wiring
accessories**
880 VA/960 W/2000 W



Fixing systems
Tile, slate, steel roofing,
fibre cement and flat
roof/floor



Photovoltaic kits
From 1 to 9.00 kWc*
* and more on request



Battery kits
5 kVA single-phase and
12 kVA three-phase

WATER-COOLED range



XDOW
Water-cooled console

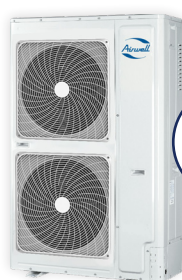
COOLING 2.50 to 3.50 kW HEATING 2.70 to 3.80 kW FLUID R410A



DFMO
Water-loop heat pump

COOLING 2.26 to 25.00 kW HEATING 2.76 to 33.20 kW FLUID R410A

VRF range



VVFA 2-pipes
Front discharge

COOLING 12.10 to 31.50 kW HEATING 14.20 to 31.50 kW FLUID R410A



VVTA 2-pipes
Continuous heating

COOLING 25.20 to 294 kW HEATING 25.20 to 294 kW FLUID R410A



VVEA 3-pipes
Energy recovery

COOLING 122.40 to 246 kW HEATING 22.40 to 246 kW FLUID R410A

VRF indoor units:



High wall



Cassette



Ducted



Console



Floor ceiling



AHU connection kit



AFTER-SALES AND QUALITY SERVICE

+33 (0)1 76 21 82 95

Monday to Friday 9 am-1230 pm / 2 pm-5 pm

TECHNICAL SUPPORT

sav@airwell.com



Airwell
ACADEMY
YOUR TRAINING
CONTACT

+33 (0)1 76 21 82 22

airwell-academy@airwell.com

GROUPE AIRWELL

10, rue du Fort de Saint-Cyr - 78180 Montigny-le-Bretonneux, FRANCE

Tel: +33 (0)1 76 21 82 00 - **www.airwell.com**

Printed in France