



Airwell

THERMODYNAMIC WATER HEATER RANGE
2023 • 2024



FRENCH BRAND



Domestic hot water production

A⁺

HYBRID
HOUSE by Airwell



+ PRODUCT

- Excellent COP
- Small footprint
- Anti-legionella function
- No refrigerant handling
- Limescale protection

FEATURES



DOMESTIC HOT WATER

TDF ELEO

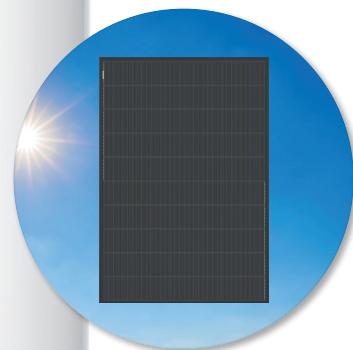
Thermodynamic water heater



TDF



TDF SOLAR



AirHome connectivity

«SUSTAINABLE DEVELOPMENT»

- > High energy class A+.
- > High-performance product with COP > 4.
- > Product 3 to 4 times more economical than an electric tank.

«USER»

- > Perfect to replace an electric tank.
- > "Peak/Off peak" operation.

«INSTALLER»

- > Easy to install thanks to its compact footprint.
- > Narrow diameter, fits through any doors.
- > Built-in limescale protection (electronic anode).

«TECHNOLOGY»

- > No risk of contamination following a refrigerant leak, thanks to the external exchanger.

ACCESSORIES/OPTIONS

ACCESSORY	PART NUMBER
Adapter kit, 90° bend and 1m duct (TDF 190)	7ACEL1735
Adapter kit, 90° bend and 1m duct (TDF 300)	7ACEL1737
Extention kit 1m duct (TDF 190)	7ACEL1736
Extention kit 1m duct (TDF 300)	7ACEL1738

See aeraulic accessories page 10.

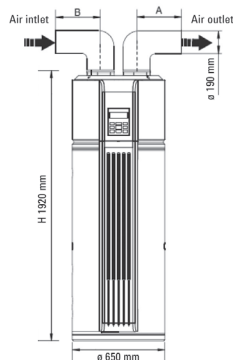
TECHNICAL DATA

TDF E100

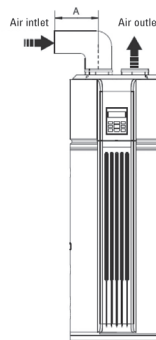
INDOOR UNITS		AW-TDF190-H31	AW-TDF300-H31	AW-TDF190S-H31	AW-TDF300S-H31
Part number		7HP030016	7HP030017	7HP030018	7HP030019
Phase		Single-phase	Single-phase	Single-phase	Single-phase
AIR +7°C WATER 10/55°C					
Heating capacity	kW	1.362	1.814	1.362	1.814
Totale power input	kW	0.423	0.519	0.423	0.519
COP		3.22	3.49	3.22	3.49
AIR +15°C WATER 10/55°C					
Heating capacity	kW	1.609	2.185	1.609	2.185
Totale power input	kW	0.439	0.541	0.439	0.541
COP		3.66	4.04	3.66	4.04
PERFORMANCE (AVERAGE CLIMATE)					
DHW profil		L	XL	L	XL
Energy label		A+	A+	A+	A+
Seasonal efficiency	%	115	123	115	123
COP		2.76	3.01	2.76	3.01
Annual consumption	kWh	890	1361	890	1361
Heating time	h:mm	7:01	7:49	7:01	7:49
Standby power consumption	W	26.3	30.6	26.3	30.6
Reference hot water temperature	°C	53.8	53.1	53.8	53.1
DHW volume	l	176	284	168	272
Mixed water at 40 °C	l	234	354	234	354
PERFORMANCE (WARMER CLIMATE)					
Seasonal efficiency	%	130	148	130	148
COP		3.13	3.59	3.13	3.59
Annual consumption	kWh	785	1131	785	1131
PERFORMANCE (COOLER CLIMATE)					
Seasonal efficiency	%	99	95	99	95
COP		2.36	2.32	2.36	2.32
Annual consumption	kWh	1032	1759	1032	1759
SOUND LEVEL					
Sound pressure level (1m)	dB(A)	36.60	38.20	36.60	38.20
Sound level	dB(A)	51	53	51	53
OPERATING LIMITS					
Outdoor temperature (min./max.)	°C	-7° / 43°	-7° / 43°	-7° / 43°	-7° / 43°
Max. water temperature (with heat pump)	°C	70	65	70	65
REFRIGERANT INFORMATION					
Refrigerant/GWP		R134A/1430	R134A/1430	R134A/1430	R134A/1430
Charge	kg	1.10	1.50	1.10	1.50
POWER SUPPLY					
Phase/Voltage/Frequency		1P/220-240/50Hz	1P/220-240/50Hz	1P/220-240/50Hz	1P/220-240/50Hz
Electric backup heater	kW	3	3	3	3
Power cable	mm ²	3x4	3x4	3x4	3x4
Max. current	A	30	30	30	30
DIMENSIONS					
Size (HxØ)	mm	1830x560	1930x650	1830x560	1930x650
Package dimensions (WxHxD)	mm	680x2070x680	775x2200x745	680x2070x680	775x2200x745
Net weight/Gross weight	kg	92/114	114/138	109/131	134/158
SOLAR EXCHANGER SURFACE AREA					
Dimension	m ²	-	-	1.1	1.3
FAN					
Type		centrifugal	centrifugal	centrifugal	centrifugal
Airflow	m ³ /h	270	414	270	414
Static pressure	Pa	25	45	25	45



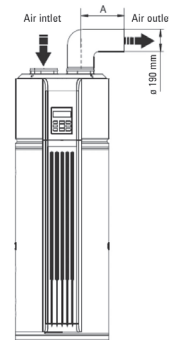
1 Inlet and outlet ducted



2 Inlet ducted



3 Outlet ducted



TROOM TYPE FOR INSTALLATION	<ul style="list-style-type: none"> Heated low volume room (< 20 m³) 	<ul style="list-style-type: none"> Low volume room (< 20 m³) and which can be cooled 	<ul style="list-style-type: none"> Heated high volume room (> 20 m³) (kitchen, bathroom...)
AIR INLET AND AIR OUTLET	<ul style="list-style-type: none"> Air inlet: outdoor air Air outlet: to adjacent room or outdoors 	<ul style="list-style-type: none"> Air inlet: outdoor air Air outlet: in the room (ambient air) 	<ul style="list-style-type: none"> Air inlet: ambient air Air outlet: to adjacent room or outdoors



Domestic hot water production

A⁺

HYBRID
HOUSE by Airwell

Stainless steel tank

+ PRODUCT

- Excellent COP
- Small footprint
- Anti-legionella function
- No refrigerant handling

FEATURES



DOMESTIC HOT WATER

TFHX ELEO

Split thermodynamic water heater



TFHX



YFHX

+ «SUSTAINABLE DEVELOPMENT»

- > High energy class A+.
- > High-performance product.
- > Product 3 to 4 times more economical than an electric tank.

+ «USER»

- > Perfect to replace an electric tank.
- > "Peak/Off peak" operation.

+ «INSTALLER»

- > Easy to install, thanks to its compact footprint.
- > Easy handling, thanks to its low weight < 80 kg.
- > Anti-scale protection: stainless steel tank + magnesium anode.

+ «TECHNOLOGY»

- > No risk of contamination following a refrigerant leak, thanks to the external exchanger.

See aeraulic accessories page 10.

TECHNICAL DATA

INDOOR UNIT		TFHX-200H-03M25
Part number		7SP170001
Phase		Monophasé
AIR +7°C WATER 10/55°C		
Heating capacity	kW	2.13
Input power	kW	0.69
COP		3.10
AIR +15°C WATER 10/55°C		
Heating capacity	kW	2.75
Input power	kW	0.74
COP		3.70
ERP PERFORMANCE (AVERAGE CLIMATE)		
DHW profil		L
Energy class		A+
Energetic efficiency	%	119
COP		2.66
Annual consumption	kWh	858
Heat up time	h:mm	7:50
Standby power input	W	87.0
Reference hot water temperature	°C	51.0
Volume of mixed water at 40°C	l	249
ERP PERFORMANCE (WARMER CLIMATE)		
Energetic efficiency	%	136
Annual consumption	kWh	748
ERP PERFORMANCE (COLDER CLIMATE)		
Energetic efficiency	%	93
Annual consumption	kWh	1089
OPERATING RANGE		
Outdoor air temperature	°C	-7 / 43
Maximum water temperature	°C	70.0
INDOOR UNIT		
Sound pressure level (1m)	dB(A)	18
Sound power level	dB(A)	33
Outline dimensions (WxHxD)	mm	1580x470
Package dimensions (WxHxD)	mm	595x1605x595
Net weight/Gross weight	kg	51/54
OUTDOOR UNIT		
Part number		7SP063214
Sound pressure level (1m)	dB(A)	51
Sound power level	dB(A)	65
Outline dimensions (WxHxD)	mm	858x545x320
Package dimensions (WxHxD)	mm	902x606x342
Net weight/Gross weight	kg	29/33
REFRIGERATION CIRCUIT		
Refrigerant/GWP		R134a/1430
Factory charge	kg	1.30
Suction pipe diameter	inches	3/8"
Liquid pipe diameter	inches	1/4"
POWER SUPPLY		
Phase/Voltage/Fréquence		1P/220-240/50Hz
Electric heater	kW	2
Power cable	mm ²	3x2.5
Fuse breaker	A	16
Electrical connections	mm ²	3x1.5



Domestic hot water production

A⁺

HYBRID
HOUSE by Airwell

TFHW ELEO

Monoblock thermodynamic water heater

Stainless steel tank

+ PRODUCT

- Excellent COP
- Small footprint
- Anti-legionella function
- No refrigerant handling

FEATURES



DOMESTIC HOT WATER



TFHW 120L



TFHW 190 L / 260 L

+ «SUSTAINABLE DEVELOPMENT»

- > High energy class A+.
- > High-performance product.
- > Product 3 to 4 times more economical than an electric tank.

+ «USER»

- > Perfect to replace an electric tank.
- > "Peak/Off peak" operation.

+ «INSTALLER»

- > Easy to install, thanks to its compact footprint.
- > Easy handling, thanks to its low weight < 80 kg.
- > Anti-scale protection: stainless steel tank + magnesium anode.

+ «TECHNOLOGY»

- > No risk of contamination following a refrigerant leak, thanks to the external exchanger.

See aeraulic accessories page 10.

TECHNICAL DATA

INDOOR UNIT		TFHW-120H-03M25	TFHW-190H-03M25	TFHW-260H-03M25
Part number		7MB170001	7MB170002	7MB170003
Phase		Monophasé	Monophasé	Monophasé
AIR +7°C WATER 10/55°C				
Heating capacity	kW	1.25	1.25	1.25
Input power	kW	0.40	0.40	0.40
COP		3.15	3.15	3.15
AIR +15°C WATER 10/55°C				
Heating capacity	kW	1.50	1.50	1.50
Input power	kW	0.41	0.41	0.41
COP		3.70	3.70	3.70
ERP PERFORMANCE (AVERAGE CLIMATE)				
DHW profil		M	M	XL
Energy class		A+	A++	A+
Energetic efficiency	%	100	139	123
COP		2.55	3.21	3.01
Annual consumption	kWh	513	368	1359
Heat up time	h:mm	5:45	5:34	7:50
Standby power input	W	7.0	26.0	30.0
Reference hot water temperature	°C	52.3	52.0	52.0
Volume of mixed water at 40°C	l	192	277	350
ERP PERFORMANCE (WARMER CLIMATE)				
Energetic efficiency	%	100	153	141
Annual consumption	kWh	513	335	1185
ERP PERFORMANCE (COLDER CLIMATE)				
Energetic efficiency	%	100	104	95
Annual consumption	kWh	513	492	1721
SOUND LEVELS				
Sound pressure level (1m)	dB(A)	46	46	46
Sound power level	dB(A)	59	59	59
OPERATING RANGE				
Outdoor air temperature	°C	-7 / 43	-7 / 43	-7 / 43
Maximum water temperature	°C	70.0	70.0	70.0
REFRIGERATION CIRCUIT				
Refrigerant/GWP		R134a/1430	R134a/1430	R134a/1430
Factory charge	kg	0.85	0.85	0.85
POWER SUPPLY				
Phase/Voltage/Fréquence		1P/220-240/50Hz	1P/220-240/50Hz	1P/220-240/50Hz
Electric heater	kW	2	2	2
Power cable	mm ²	3x2.5	3x2.5	3x2.5
Fuse breaker	A	16	16	16
DIMENSIONS				
Outline dimensions (HxØ)	mm	1310x568	1690x568	1950x568
Package dimensions (WxHxD)	mm	690x1410x690	690x1750x690	690x2070x690
Net weight/Gross weight	kg	62/68	69/80	76/90



Domestic hot water production

TFHZ ELEO

Solar thermodynamic water heater

A⁺⁺

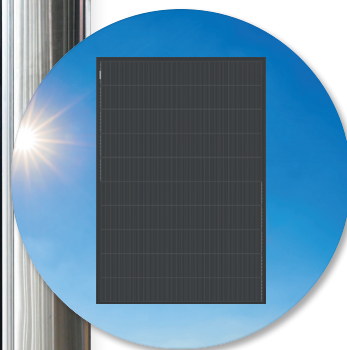
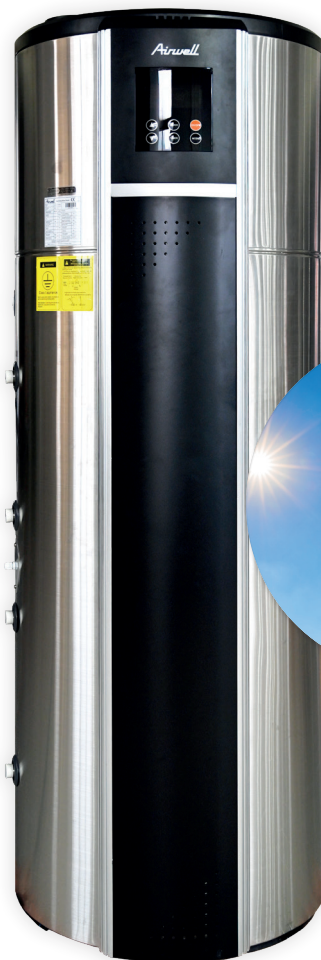
HYBRID
HOUSE by Airwell

Stainless steel tank

+ PRODUCT

- Excellent COP
- Small footprint
- Anti-legionella function
- No refrigerant handling

FEATURES



TFHZ

+ «SUSTAINABLE DEVELOPMENT»

- > High energy class A+.
- > High-performance product.
- > Product 3 to 4 times more economical than an electric tank.

+ «USER»

- > Perfect to replace an electric tank.
- > "Peak/Off peak" operation.

+ «INSTALLER»

- > Easy to install, thanks to its compact footprint.
- > Easy handling, thanks to its low weight < 80 kg.
- > Anti-scale protection: stainless steel tank + magnesium anode.

+ «TECHNOLOGY»

- > No risk of contamination following a refrigerant leak, thanks to the external exchanger.

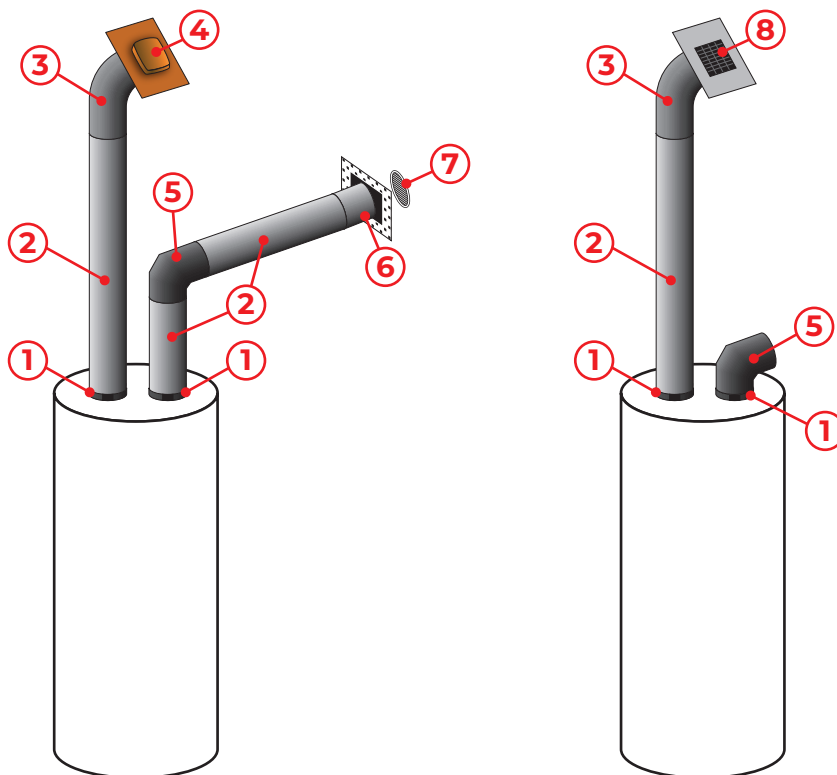
See aeraulic accessories page 10.

TECHNICAL DATA

INDOOR UNIT		TFHZ-300S-03M25
Part number		7MB170004
Phase		Monophasé
AIR +7°C WATER 10/55°C		
Heating capacity	kW	1.90
Input power	kW	0.60
COP		3.15
AIR +15°C WATER 10/55°C		
Heating capacity	kW	2.45
Input power	kW	0.67
COP		3.68
ERP PERFORMANCE (AVERAGE CLIMATE)		
DHW profil		L
Energy class		A++
Energetic efficiency	%	174
COP		4.12
Annual consumption	kWh	587
Heat up time	h:mm	7:49
Standby power input	W	27.0
Reference hot water temperature	°C	51.8
Volume of mixed water at 40°C	l	387
ERP PERFORMANCE (WARMER CLIMATE)		
Energetic efficiency	%	191
Annual consumption	kWh	533
ERP PERFORMANCE (COLDER CLIMATE)		
Energetic efficiency	%	133
Annual consumption	kWh	766
SOUND LEVELS		
Sound pressure level (1m)	dB(A)	48
Sound power level	dB(A)	59
OPERATING RANGE		
Outdoor air temperature	°C	-7 / 43
Maximum water temperature	°C	70.0
REFRIGERATION CIRCUIT		
Refrigerant/GWP		R134a/1430
Factory charge	kg	1.10
POWER SUPPLY		
Phase/Voltage/Fréquence		1P/220-240/50Hz
Electric heater	kW	2
Power cable	mm ²	3x2.5
Fuse breaker	A	16
DIMENSIONS		
Outline dimensions (HxØ)	mm	1915x646
Package dimensions (WxHxD)	mm	710x2050x710
Net weight/Gross weight	kg	92/114

ACCESSORIES

for thermodynamic water heater



NUMBER	ACCESSORY	VISUAL
1	160 Clamp 160/160 Adapter Sealing foam	
2	160 duct	
3	160 flexible	
4	160 ochre roof terminal	
5	90° elbow	
6	Sealing sleeve	
7	White PVC grill	
8	160 slate roof terminal	

KIT 1 SEPERATE RETURN		PART NUMBER: 7ACVF0602
Designation	Quantity	Scheme number
160 clamp	1	1
160/160 adapter	1	
Sealing foam	1	
90° elbow	1	5

KIT 2 WALL OUTLET		PART NUMBER: 7ACVF0604
Designation	Quantity	Scheme number
160 clamp	1	1
160/160 adapter	1	
Sealing foam	1	
160 duct	1 ml	2
90° elbow	1	5
Sealing sleeve	1	6
160/160 connector	1	7
White PCV grill	1	

KIT 3 EXTENSION KIT		PART NUMBER: 7ACVF0603
Designation	Quantity	Scheme number
160/160 connector	1	2
160 duct	1 ml	

KIT 4 SLATE ROOF		PART NUMBER: 7ACVF0605
Designation	Quantity	Scheme number
160 clamp	1	1
160/160 adapter	1	
Sealing foam	1	
160 duct	5 ml	2
160 flexible	1	3
160 slate roof terminal	1	8

KIT 5 OCHRE ROOF		PART NUMBER: 7ACVF0606
Designation	Quantity	Scheme number
160 clamp	1	1
160/160 adapter	1	
Sealing foam	1	
160 duct	5 ml	2
160 flexible	1	3
160 ochre roof terminal	1	4

KIT 6 45° ELBOW		PART NUMBER: 7ACVF0607
Designation	Quantity	Scheme number
160/160 connector	2	2
45° elbow	2	

AS PART OF ITS INVOLVEMENT IN THE
ENERGY TRANSITION
AIRWELL HAS IMPLEMENTED THE

Airwell ACADEMY

TECHNICAL & QUALIFICATION TRAINING

to allow maintenance technicians, installers and distributors to develop their knowledge and offer them an energy management system that is both essential for their activity but also for the planet!



Read more about training at:
www.airwell-academy.fr

AFTER-SALES
SERVICE

+33 (0)1 76 21 82 95

Monday to Friday 9 am-12:30 pm / 2 pm-5 pm

TECHNICAL SUPPORT

sav@airwell.com

GROUPE AIRWELL

10, rue du fort de Saint Cyr - 78180 Montigny-le-Bretonneux, FRANCE

Tél.: +33 (0)1 76 21 82 00 - www.airwell.com

Printed in France