

# Airwell

■ Just feel well

## YAZE [ ECODESIGN ]

Premium multisplit  
Duo/Trio/Quattro/Cinco  
DC Inverter



All sizes



COMPATIBLE WITH

HJD

SXB



CNE

DLF



DLSE



[ ECODESIGN ] Comply with ECO Design regulation

## YAZE

### Premium multi Duo/Trio/Quattro/Cinco

COMPATIBLE WITH

HIGH WALL  
HJD 9/12/18/24



FLOOR CEILING  
SXB 9/12/18



CASSETTE  
CNE 9/12/18/24



DUCTED LOW STATIC  
PRESSURE DLF 9/12/18/24



DUCTED MEDIUM STATIC  
PRESSURE DLSE 18/24



## YAZE2-18 Premium multi Duo

[ CAPACITY COMBINATION ]

Mandatory to connect all indoor units



Indoor units combinations	COOLING									HEATING									
	Capacity (kW)					Power input (kW)				EER	Capacity (kW)				Power input (kW)				COP
	A	B	Totale	Min	Max	Nom.	Min	Max	A		B	Totale	Min	Max	Nom.	Min	Max		
9+9	2.50	2.50	5.00	1.80	6.00	1.47	0.55	2.10	3.40	3.00	3.00	6.00	2.00	6.50	1.66	0.58	1.80	3.61	
9+12	2.14	2.86	5.00	1.80	6.30	1.47	0.55	2.13	3.40	2.57	3.43	6.00	2.00	6.65	1.66	0.58	1.89	3.61	
12+12	2.50	2.50	5.00	1.80	6.40	1.47	0.55	2.13	3.40	3.00	3.00	6.00	2.00	6.80	1.66	0.58	1.89	3.61	

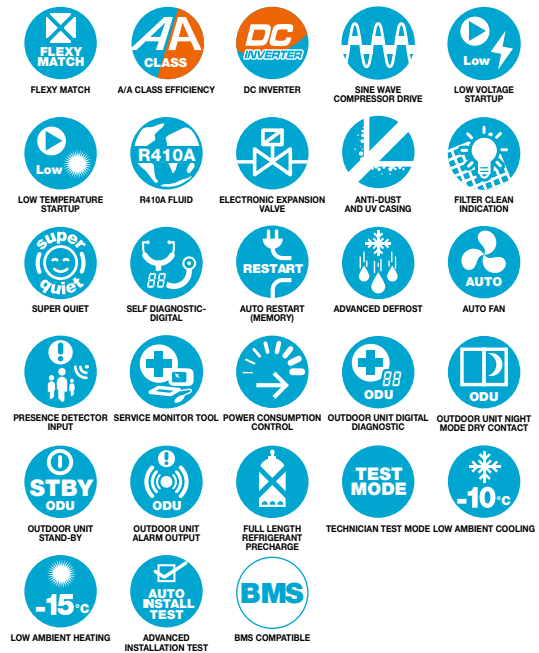
Based on wall mounted combination

## YAZE

# Premium multi Duo/Trio/Quattro/Cinco

## FUNCTIONS

- > Multi line available in 4 capacities from 5 up to 9.5 kW.
- > DC Inverter and sine wave compressor drive technology.



## PRODUCT ADVANTAGES

- > Flexy Match with wide range of indoor units including HJD, SXB, CNE, DLSE, DLF lines.
- > Precharge to maximum tubing length up to 80 m.
- > Possibility to connect to alarm output, unit ON/OFF, night mode and power consumption level.
- > Fuzzy logic for precise capacity balance between indoor unit under operation.
- > Same indoor unit for multi and single application.



## YAZE3-24 Premium multi Trio

### [ CAPACITY COMBINATION ]

Mandatory to connect all indoor units



Indoor units combinations	COOLING											HEATING										
	Capacity (kW)						Power input (kW)			EER	Capacity (kW)						Power input (kW)			COP		
	A	B	C	D	Totale	Min	Max	Nom.	Min		Max	A	B	C	D	Totale	Min	Max	Nom.		Min	Max
9+9+9	2.45	2.45	2.45	-	7.35	2.69	8.98	2.24	0.95	3.05	3.28	3.07	3.07	3.07	-	9.20	2.06	10.99	2.31	0.80	3.01	3.98
9+9+12	2.99	2.25	2.25	-	7.48	2.69	9.00	2.28	0.95	3.16	3.28	2.76	2.76	3.68	-	9.20	2.06	11.00	2.31	0.80	2.97	3.98
9+9+18	3.74	1.87	1.87	-	7.47	2.69	9.00	2.28	0.96	3.10	3.28	2.30	2.30	-	4.60	9.20	2.06	11.00	2.31	0.77	2.83	3.98
9+12+12	2.71	2.71	2.04	-	7.46	2.69	9.00	2.28	0.95	3.10	3.28	3.34	2.51	3.34	-	9.19	2.06	11.00	2.31	0.80	2.94	3.98
9+12+18	3.45	2.30	-	1.72	7.46	2.69	9.00	2.28	0.96	3.06	3.28	2.82	2.12	-	4.24	9.18	2.14	11.00	2.31	0.77	2.75	3.98
12+12+12	2.49	2.49	2.49	-	7.47	2.69	9.00	2.28	0.99	3.09	3.28	3.07	3.07	3.07	-	9.20	2.06	11.00	2.31	0.80	2.85	3.98
12+12+18	3.19	2.13	-	2.13	7.45	2.69	9.00	2.27	0.96	3.09	3.28	2.63	2.63	-	3.94	9.19	2.14	11.00	2.31	0.77	2.70	3.98

Based on wall mounted combination

## YAZE4-30 Premium multi Quattro

### [ CAPACITY COMBINATION ]

Mandatory to connect all indoor units



Indoor units combinations	COOLING											HEATING										
	Capacity (kW)						Power input (kW)			EER	Capacity (kW)						Power input (kW)			COP		
	A	B	C	D	Totale	Min	Max	Nom.	Min		Max	A	B	C	D	Totale	Min	Max	Nom.		Min	Max
9+9+12	3.15	2.36	2.36	-	7.87	2.90	9.00	2.45	0.92	2.90	3.22	3.92	2.94	2.94	-	9.80	2.06	11.00	2.31	0.67	2.89	4.25
9+9+18	4.01	2.00	-	2.00	8.01	2.90	9.00	2.47	0.93	2.85	3.25	4.90	2.45	-	2.45	9.80	2.06	11.00	2.14	0.65	2.88	4.57
9+12+12	2.90	2.90	2.17	-	7.97	2.90	9.00	2.45	0.92	2.85	3.26	3.56	3.56	2.67	-	9.78	2.06	11.00	2.25	0.67	2.87	4.35
9+12+18	3.74	2.50	-	1.87	8.11	2.90	9.00	2.48	0.93	2.82	3.28	4.51	3.01	-	2.26	9.78	2.14	11.00	2.08	0.65	2.73	4.70
12+12+12	2.69	2.69	2.69	-	8.07	2.90	9.00	2.37	0.96	2.84	3.40	3.26	3.26	3.26	-	9.79	2.06	11.00	2.23	0.67	2.86	4.40
12+12+18	3.47	2.31	-	2.31	8.10	2.90	9.00	2.37	0.93	2.80	3.42	4.19	2.79	-	2.79	9.78	2.14	11.00	2.06	0.65	2.67	4.74
9+9+9+9	2.00	2.00	2.00	2.00	8.00	3.70	9.17	2.38	0.98	2.94	3.36	2.45	2.45	2.45	2.45	9.80	2.69	10.97	2.36	0.56	2.94	4.15
9+9+9+12	2.49	1.87	1.87	1.87	8.10	3.70	9.20	2.41	0.98	2.92	3.36	3.01	2.25	2.25	2.25	9.77	2.69	11.00	2.34	0.56	2.90	4.18
9+9+9+18	3.25	1.62	1.62	1.62	8.12	3.70	9.20	2.34	0.96	2.88	3.48	3.92	1.96	1.96	1.96	9.80	2.77	11.00	2.27	0.55	2.78	4.31
9+9+12+12	2.32	2.32	1.74	1.74	8.11	3.70	9.20	2.40	0.98	2.88	3.38	2.80	2.80	2.10	2.10	9.79	2.69	11.00	2.29	0.56	2.86	4.28
9+9+12+18	3.05	2.03	1.52	1.52	8.12	3.70	9.20	2.30	0.96	2.85	3.53	3.67	2.45	1.84	1.84	9.79	2.77	11.00	2.18	0.55	2.76	4.50
9+12+12+12	2.16	2.16	2.16	1.62	8.11	3.70	9.20	2.39	0.98	2.87	3.39	2.61	2.61	2.61	1.96	9.78	2.69	11.00	2.25	0.56	2.82	4.35
9+12+12+18	2.87	1.91	1.91	1.43	8.12	3.70	9.20	2.30	0.96	2.89	3.53	3.45	2.30	2.30	1.73	9.78	2.77	11.00	2.18	0.55	2.90	4.49
12+12+12+12	2.03	2.03	2.03	2.03	8.12	3.70	9.20	2.38	0.98	2.84	3.41	2.45	2.45	2.45	2.45	9.80	2.69	11.00	2.36	0.55	2.80	4.15

Based on wall mounted combination

# YAZE5-36 Premium multi Cinco

## [ CAPACITY COMBINATION ]

Mandatory to connect all indoor units



Indoor units combinations	COOLING												HEATING											
	Capacity (kW)						Input power (kW)			EER	Capacity (kW)						Input power (kW)			COP				
	A	B	C	D	E	Totale	Min	Max	Nom.		Min	Max	A	B	C	D	E	Totale	Min		Max	Nom.	Min	Max
9+9+18	2.1	2.1	-	4.3	-	8.5	3.0	9.5	2.51	0.70	2.92	3.38	2.6	2.6	-	5.2	-	10.4	3.0	11.4	2.39	0.70	2.92	4.35
9+9+24	2.0	2.0	-	5.2	-	9.2	3.2	9.9	2.71	0.68	3.05	3.38	2.2	2.2	-	5.9	-	10.4	3.2	11.6	2.39	0.68	3.05	4.35
9+12+18	2.0	2.7	-	4.1	-	8.8	3.1	9.7	2.61	0.70	2.89	3.38	2.4	3.2	-	4.8	-	10.4	3.1	11.5	2.39	0.70	2.89	4.35
9+12+24	1.9	2.5	-	5.1	-	9.5	3.3	10.1	2.81	0.68	3.02	3.38	2.1	2.8	-	5.5	-	10.4	3.3	11.8	2.39	0.68	3.02	4.35
9+18+18	1.9	-	-	3.8	3.8	9.5	3.3	10.1	2.81	0.66	3.02	3.38	2.1	-	-	4.2	4.2	10.4	3.3	11.8	2.39	0.66	3.02	4.35
9+18+24	1.7	-	-	3.4	4.5	9.5	3.5	10.5	2.81	0.66	3.05	3.38	1.8	-	-	3.7	4.9	10.4	3.5	12.0	2.39	0.66	3.05	4.35
12+12+12	2.8	2.8	2.8	-	-	8.5	3.0	9.5	2.51	0.72	2.91	3.38	3.5	3.5	3.5	-	-	10.4	3.0	11.4	2.39	0.72	2.91	4.35
12+12+18	2.6	2.6	-	3.9	-	9.2	3.2	9.9	2.71	0.70	3.00	3.38	3.0	3.0	-	4.6	-	10.7	3.2	11.6	2.45	0.70	3.00	4.35
12+12+24	2.4	2.4	-	4.8	-	9.5	3.4	10.3	2.81	0.68	3.05	3.38	2.7	2.7	-	5.5	-	10.9	3.4	11.9	2.51	0.68	3.05	4.35
12+18+18	2.4	-	-	3.6	3.6	9.5	3.4	10.3	2.81	0.68	3.02	3.38	2.7	-	-	4.1	4.1	10.9	3.4	11.9	2.51	0.68	3.02	4.35
9+9+9+9	2.2	2.2	2.2	2.2	-	8.8	3.4	9.8	2.33	0.81	2.67	3.77	2.5	2.5	2.5	2.5	-	10.0	3.4	10.0	2.08	0.81	2.67	4.80
9+9+9+12	2.1	2.1	2.1	2.8	-	9.1	3.6	10.1	2.22	0.81	2.65	3.83	2.4	2.4	2.4	3.2	-	10.3	3.6	10.4	2.15	0.81	2.65	4.00
9+9+9+18	1.9	1.9	1.9	3.9	-	9.7	3.9	10.7	2.30	0.79	2.71	3.94	2.2	2.2	2.2	-	4.3	10.8	3.9	11.1	2.36	0.79	2.71	4.00
9+9+9+24	1.8	1.8	1.8	4.7	-	10.0	4.2	11.0	2.43	0.77	2.89	4.00	1.9	1.9	1.9	-	5.2	11.0	4.2	11.5	2.35	0.77	2.89	3.80
9+9+12+12	2.0	2.0	2.7	2.7	-	9.4	3.7	10.4	2.23	0.81	2.71	3.89	2.3	2.3	3.0	3.0	-	10.5	3.7	10.8	2.55	0.81	2.71	4.00
9+9+12+18	1.9	1.9	2.5	3.8	-	10.0	4.0	11.0	2.42	0.79	2.75	4.00	2.1	2.1	2.8	-	4.1	11.0	4.0	11.5	2.33	0.79	2.75	4.00
9+9+18+18	1.7	1.7	-	3.3	3.3	10.0	4.3	11.0	2.41	0.77	2.89	4.00	1.8	1.8	-	3.7	3.7	11.0	4.3	11.5	2.25	0.77	2.89	3.60
9+12+12+12	1.9	2.6	2.6	2.6	-	9.7	3.9	10.7	2.30	0.81	2.61	3.94	2.2	2.9	2.9	2.9	-	10.8	3.9	11.1	2.52	0.81	2.61	4.00
9+12+12+18	1.8	2.4	2.4	3.5	-	10.0	4.2	11.0	2.43	0.79	2.89	4.00	1.9	2.6	2.6	3.9	-	11.0	4.2	11.5	2.29	0.79	2.89	3.80
12+12+12+12	2.5	2.5	2.5	2.5	-	10.0	4.0	11.0	2.50	0.81	2.92	4.00	2.8	2.8	2.8	2.8	-	11.0	4.0	11.5	2.50	0.81	2.92	4.00
9+9+9+9+9	2.0	2.0	2.0	2.0	2.0	10.0	4.3	11.0	2.94	0.78	3.50	3.70	2.4	2.4	2.4	2.4	2.4	12.0	4.3	12.5	2.94	0.78	3.50	4.50
9+9+9+9+12	1.9	1.9	1.9	1.9	2.6	10.3	4.4	11.0	2.94	0.78	3.50	3.60	2.3	2.3	2.3	2.3	3.0	12.0	4.4	12.5	2.94	0.78	3.50	4.30
9+9+9+9+18	1.8	1.8	1.8	1.8	3.5	10.5	4.6	11.0	2.92	0.79	3.49	3.40	2.0	2.0	2.0	2.0	4.0	12.0	4.6	12.5	2.92	0.79	3.49	4.20
9+9+9+12+12	1.9	1.9	1.9	2.5	2.5	10.5	4.50	11.0	2.94	0.78	3.50	3.50	2.1	2.1	2.1	2.8	2.8	12.0	4.50	12.5	2.94	0.78	3.50	4.30

Based on wall mounted combination

## YAZE

# Premium multi Duo/Trio/Quattro/Cinco



### [ TECHNICAL DATA ]

Outdoor units		AWAU-YAZE218-H11	AWAU-YAZE324-H11	AWAU-YAZE430-H11	AWAU-YAZE536-H11
<b>COOLING</b>					
<b>Rated capacity</b>	<b>kW</b>	<b>5 (1.2-6.4)</b>	<b>7.35 (1.3-9)</b>	<b>8 (1.4-9.2)</b>	<b>9.5 (2.0-11.0)</b>
<b>Pdesignc</b>	<b>kW</b>	<b>5</b>	<b>7.35</b>	<b>8</b>	<b>9.5</b>
Input power	kW	1.47	2.24	2.38	2.81
SEER/Energy label		5.61/A+	5.61/A+	5.61/A+	4.7/B
Operating limits	°C	-10°/46° Dry bulb			
<b>HEATING</b>					
<b>Rated capacity</b>	<b>kW</b>	<b>6.0 (1.0-6.8)</b>	<b>9.2 (0.95-11)</b>	<b>9.8 (0.95-11)</b>	<b>11.5 (2.4-12.5)</b>
<b>Pdesignh</b>	<b>kW</b>	<b>5.0</b>	<b>7.5</b>	<b>8.5</b>	<b>11.5</b>
Input power	kW	1.7	2.36	2.71	2.65
SCOP/Energy label		4.00/A+	4.00/A+	4.00/A+	4.5/A+
Operating limits	°C	-15°/24° Dry bulb			
Capacity @ -10°C	kW	3.8	6.82	7.55	8.6
Capacity @ -15°C	kW	3.41	6.2	6.8	7.7
<b>OUTDOOR UNIT</b>					
Sound pressure level to 1 m	dB(A)	53	57	57	58
Sound power level	dB(A)	63	69	69	69
Airflow	m³/h	2160	3600	3600	4150
Compressor type		Rotary DC Inverter		Twin Rotary DC Inverter	
Outline dimensions (WxHxD)	mm	795x610x290	950x864x413	950x864x413	900x970x340
Package dimensions (WxHxD)	mm	970x655x395	1070x940x510	1070x940x510	985x1020x435
Net weight/Gross weight	kg	39/42	69/75	70/76	85/87.8
<b>Part number</b>		<b>7SP091164</b>	<b>7SP091162</b>	<b>7SP091163</b>	<b>7SP091161</b>
<b>POWER SUPPLY 1~230V - 50 HZ</b>					
Power supply side		Outdoor	Outdoor	Outdoor	Outdoor
Power cable section	mm²	3x2.5	3x2.5	3x2.5	3x2.5
Fuse rating am	A	20	25	25	25
Electrical connections	mm²	2x (4x1.5)	3x (4x1.5)	4x (4x1.5)	5x (4x1.5)
<b>PIPE LINE</b>					
Suction pipe diameter	inches	2x3/8"	2x3/8" + 1x1/2"	3x3/8" + 1x1/2"	3x3/8" + 2x1/2"
Liquid pipe diameter	inches	2x1/4"	3x1/4"	4x1/4"	5x1/4"
Max length	m	30	50	70	80
Max length per circuit	m	25	25	25	25
Max height between indoor and outdoor units	m	10	15	15	15
Max height between indoor units	m	5	15	15	15