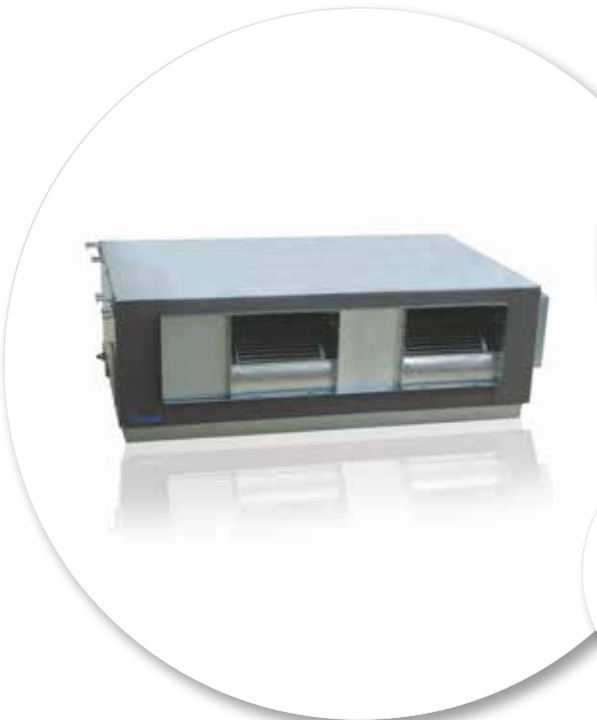


DAF [**ECODESIGN**]

Ducted
68 to 136 monosplit
Fixed speed

- Ducted line available in capacities from 20 up to 39.5 kW.
- Cooling & heating operation mode.
- "I Feel" function with precise room temperature control.



PRODUCT ADVANTAGES

- > Wired (IR receiver integrated) and wireless remote controls provided as standard.
- > Self diagnostic (error indications) in remote the wired remote control for ease of maintenance.
- > Space saving due to low unit height.
- > Centralized controller up to 16 units including weekly timer (optional).
- > Sizes 85 & 136 operating in -15°C with season kit integrated.

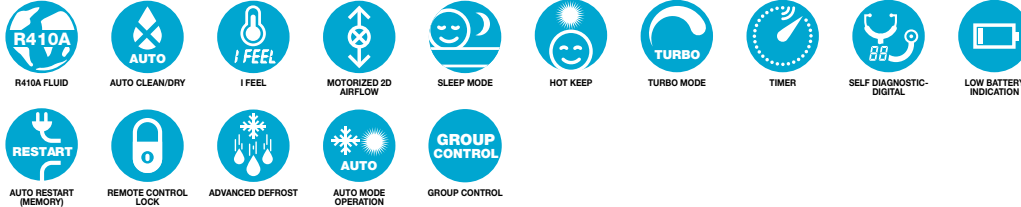


RC08A

RCW3

DAF

Ducted 68 to 136 monosplit / Fixed speed



RCW4
(optional)

[TECHNICAL DATA]

Indoor units		AWSI-DAF068-N13	AWSI-DAF085-N13	AWSI-DAF102-N13	AWSI-DAF136-N13
Outdoor units		AWAU-YIF068-H13	AWAU-YIF085-H13	AWAU-YIF102-H13	AWAU-YIF136-H13
COOLING					
Capacity	kW	20.0	24.5	30.0	39.5
Input power	kW	8.4	9.8	11.0	15.8
EER/Energy label		2.38	2.5	2.73	2.5
Operating limits	°C	18°/43° Dry bulb	-15°/43° Dry bulb	18°/43° Dry bulb	-15°/43° Dry bulb
HEATING					
Capacity	kW	22.0	27.5	33.0	42.0
Input power	kW	7.4	9.00	9.0	14.0
COP/Energy label		2.97	3.05	3.67	3.0
Operating limits	°C	-7°/24° Dry bulb			
INDOOR UNIT					
Sound pressure level to 1 m	dB(A)	56	54	57	58
Sound power level	dB(A)	66	64	67	68
Airflow	m³/h	4000	4800	5500	7000
External static pressure	Pa	200 (100-300)	110 (30-250)	120 (50-250)	150 (50-300)
Dehumidification	l/h	5.4	7.5	9	12
Outline dimensions (WxHxD)	mm	1463x389x799	1500x500x1000	1500x500x1000	1700x650x1100
Package dimensions (WxHxD)	mm	1540x470x880	1840x673x1200	1840x673x1200	1890x835x1460
Net weight/Gross weight	kg	86/109	150/200	156/206	215/265
Part number		7SP032127	7SP032128	7SP032129	7SP032130
OUTDOOR UNIT					
Sound pressure level to 1 m	dB(A)	65	66	67	69
Sound power level	dB(A)	75	76	77	79
Airflow	m³/h	8000	8000	11000	13000
Compressor type		Scroll	Scroll	Scroll	Scroll
Outline dimensions (WxHxD)	mm	1150x1350x460	1150x1600x460	990x1772x880	1290x1772x880
Package dimensions (WxHxD)	mm	1317x1475x502	1317x1730x502	1162x1950x980	1370x1950x980
Net weight/Gross weight	kg	158/174	185/200	216/266	285/330
Part number 3~400V - 50 Hz		7SP061794	7SP061795	7SP061796	7SP061797
POWER SUPPLY 3~400V - 50 HZ					
Power supply side		Indoor & Outdoor	Indoor & Outdoor	Indoor & Outdoor	Indoor & Outdoor
Power cable section	mm²	5x1.0 - 5x4.0	5x1.0 - 5x6.0	5x1.0 - 5x10.0	5x1.5 - 5x10.0
Fuse rating am	A	10 - 25	10 - 32	10 - 40	10 - 40
Electrical connections	mm²	2x0.75	2x0.75	2x0.75	2x0.75
PIPE LINE					
Suction pipe diameter	inches	3/4"	1"	1-1/8"	1-1/8"
Liquid pipe diameter	inches	3/8"	3/8"	1/2"	5/8"
Max length	m	50	50	50	50
Max height	m	30	30	30	30