

Airwell

■ *Just feel well*

SIMPLE TECHNICAL MANUAL

YND 024 [**ECODESIGN**]

Monosplit / DC Inverter



NEW



YND 024



COMPATIBLE WITH
HND



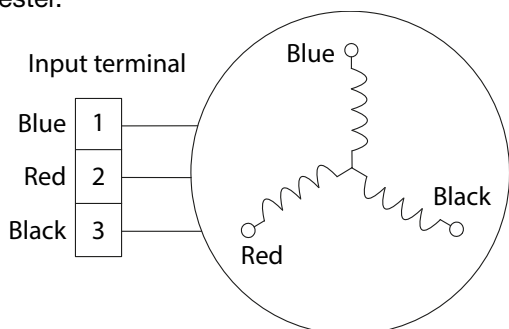
[**ECODESIGN**] Comply with ECO Design regulation

[TECHNICAL DATA]

| Outdoor unit YND 024 | | |
|-------------------------------------|-----------|----------------------|
| Cooling capacity | kW | 7.0 (2.8-7.6) |
| Input power (cooling) | kW | 2.32 |
| Heating capacity | kW | 7.2 (2.8-7.8) |
| Input power (heating) | kW | 2.11 |
| Circuit breaker rating | A | 25 |
| Sound pressure level outdoor unit | dB(A) | 59 |
| Weight outdoor unit | kg | 51.2 |
| Refrigerant charge | kg (5m) | 2.25 |
| Additional charge | g/m | 30 |
| Annual energy consumption (cooling) | kW/h | 422 |
| Annual energy consumption (heating) | kW/h | 2358 |
| Max length | m | 25 |
| Max height | m | 10 |
| Refrigerant control | type | Capillary tube |

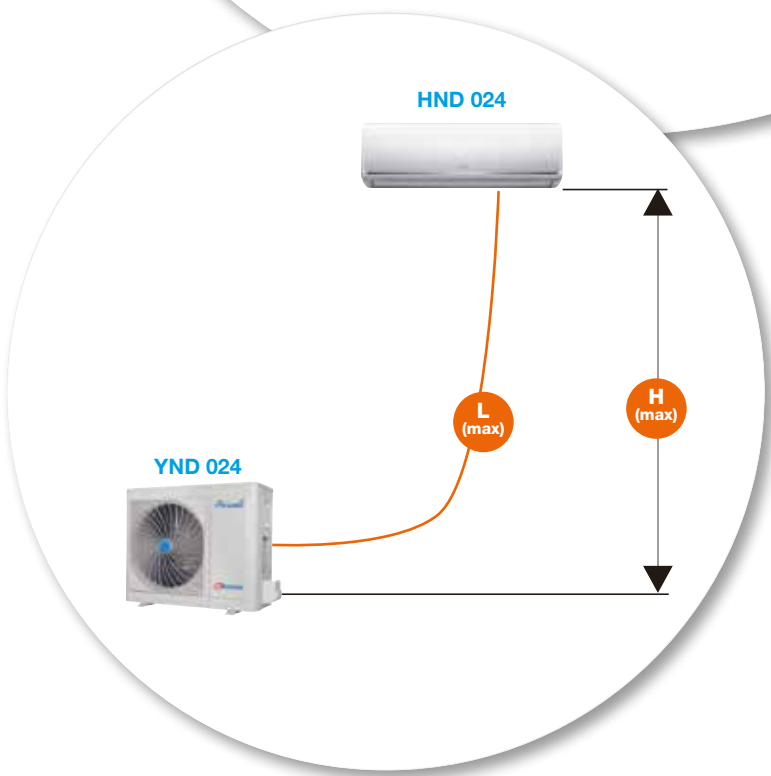
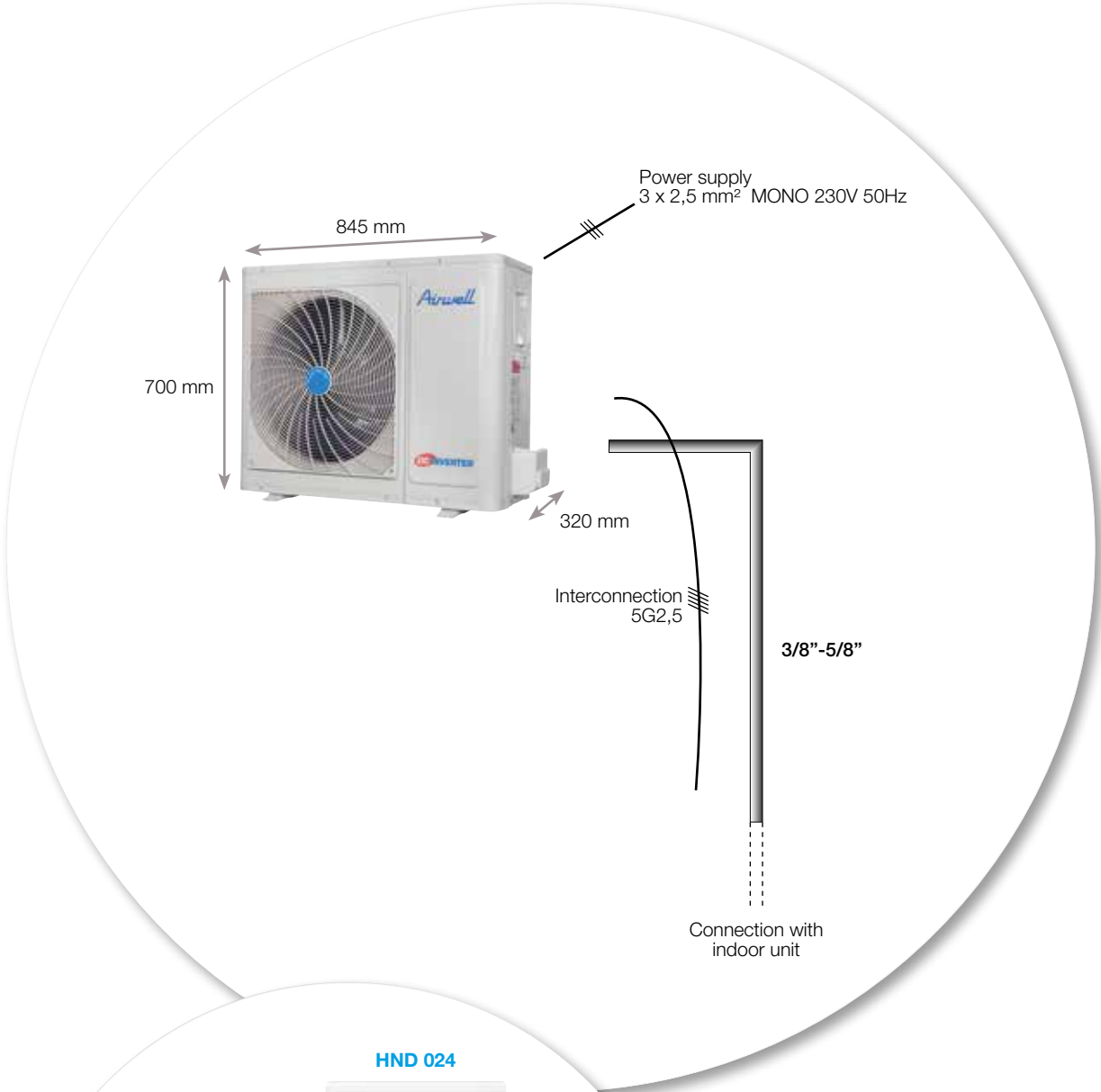
[COMPRESSOR CHECKING]

→ Measure the resistance value of each winding by using the tester.



| Position | Resistance Value | | |
|--------------|------------------|-------------------|-------------------|
| | ASN108D22UEZ | DA150S1C-20FZ | DA250S2C-30MT |
| Blue - Red | | | |
| Blue - Black | 1,5 Ω (20 °C) | 0,95 Ω (20 °C) | 0,55 Ω (20 °C) |
| Red - Blue | | | |





→ L(max) = 25 m
→ H(max) = 10 m

- Cable
- ▬ Pipe
- ≡ Number of wires

[FAULT CODE DISPLAY FROM HND]

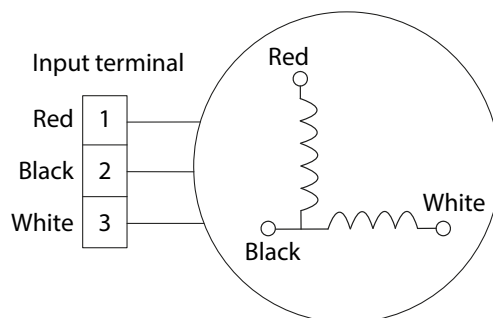
| Displayed though IDU | | | Fault description |
|----------------------|-----------|-----------|---|
| Display | LEDs | Displayed | |
| E0 | ☆ 1 time | □ | IDU Bad EEPROM |
| E1 | ☆ 2 times | □ | Communication failure IDU/ODU |
| E2 | ☆ 3 times | □ | Zero crossing error (for HND009 and HND024) |
| E3 | ☆ 4 times | □ | IFAN failure |
| E4 | ☆ 5 times | □ | RAT failure |
| E5 | ☆ 6 times | □ | ICT failure |
| EC | ☆ 7 times | □ | Refrigerant Leakage Detection |
| F1 | ☆ 2 times | ■ | OAT failure |
| F2 | ☆ 3 times | ■ | OCT failure |
| F3 | ☆ 4 times | ■ | CTT failure |
| F4 | ☆ 5 times | ■ | ODU Bad EEPROM |
| F5 | ☆ 6 times | ■ | OFAN failure |
| P0 | ☆ 1 times | ☆ | IPM fault |
| P1 | ☆ 2 times | ☆ | Over voltage / under voltage |
| P2 | ☆ 3 times | ☆ | Compressor overload |
| P4 | ☆ 5 times | ☆ | Compressor drive failure |

□ LED light off / ■ LED light on / ☆ LED blink

[INDOOR AC FAN MOTOR]

→ Measure the resistance value of each winding by using the tester.

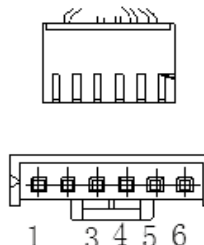
| Position | Resistance Value | |
|---------------|---------------------|---------------------|
| | RPG50C | |
| Black - Red | 110 Ω ± 8 % (20 °C) | 123 Ω ± 8 % (20 °C) |
| White - Black | 93 Ω ± 8 % (20 °C) | 99 Ω ± 8 % (20 °C) |



[OUTDOOR DC FAN MOTOR (CONTROL CHIP IS IN FAN MOTOR)]

→ Power on and when the unit is in standby, measure the voltage of pin1-pin3, pin4-pin3 in fan motor connector. If the value of the voltage is not in the range showing in below table, the PCB must have problems and need to be replaced.

| DC motor voltage input and output | | | |
|-----------------------------------|--------|--------|-----------|
| N° | Color | Signal | Voltage |
| 1 | Red | Vs/Vm | 280~380 V |
| 2 | - | - | - |
| 3 | Black | GND | 0 V |
| 4 | White | Vcc | 14~17,5 V |
| 5 | Yellow | Vsp | 0~5,6 V |
| 6 | Blue | FG | 14~17,5 V |



[SOME FREQUENTLY-USED R-T DATA FOR RAT, ICT, OCT, OAT SENSOR]

| Temperature | °C | 5 | 10 | 15 | 20 | 25 | 30 | 40 | 50 | 60 |
|------------------|----|------|------|------|------|----|----|-----|-----|-----|
| Resistance Value | kΩ | 26,9 | 20,7 | 16,1 | 12,6 | 10 | 8 | 5,2 | 3,5 | 2,4 |

Remark: RAT - Room Air Thermistor. ICT - Indoor Coil Thermistor. OCT - Outdoor Coil Thermistor. OAT - Outdoor Air Thermistor.

[SOME FREQUENTLY-USED R-T DATA FOR CTT SENSOR]

| Temperature | °C | 5 | 15 | 25 | 35 | 60 | 70 | 80 | 90 | 100 |
|------------------|----|-------|----|------|------|------|-----|-----|----|-----|
| Resistance Value | kΩ | 141,6 | 88 | 56,1 | 36,6 | 13,8 | 9,7 | 6,9 | 5 | 3,7 |

Remark: CTT - Compressor Discharge Thermistor.

Our Aftersales Service

Export

Tél. ■ +33 (0)1 76 21 82 95

Fax ■ +33 (0)1 76 21 82 96

SPARE PARTS ORDERS:
e-mail ■ sp@airwell-res.com

TECHNICAL SUPPORT:
e-mail ■ technical-sp@airwell-res.com