

# X AR 2450 / UC 74 X AR 3250 / UC 104



**POWER SUPPLY MUST BE SWITCHED OFF BEFORE STARTING TO WORK IN THE ELECTRIC CONTROL BOX!**

**MISE HORS TENSION OBLIGATOIRE AVANT TOUTE INTERVENTION DANS LES BOITIERS ELECTRIQUES.**

**VOR JEDEM EINGRIFF AN DEN ANSCHLUSSKÄSTEN UNBEDINGT DAS GERÄT STROMLOS SCHALTEN!**

**PRIMA DI OGNI INTERVENTO SULLE CASSETTE ELETTRICHE ESCLUDERE TASSATIVAMENTE L'ALIMENTAZIONE!**

**PUESTA FUERA DE TENSÓN OBLIGATORIA ANTES DE CUALQUIER INTERVENCIÓN EN LAS CAJAS ELÉCTRICAS!**



**X1**



**X1**



**X1**



**X1**



**X1**

XARV 2450/UC74: 4A



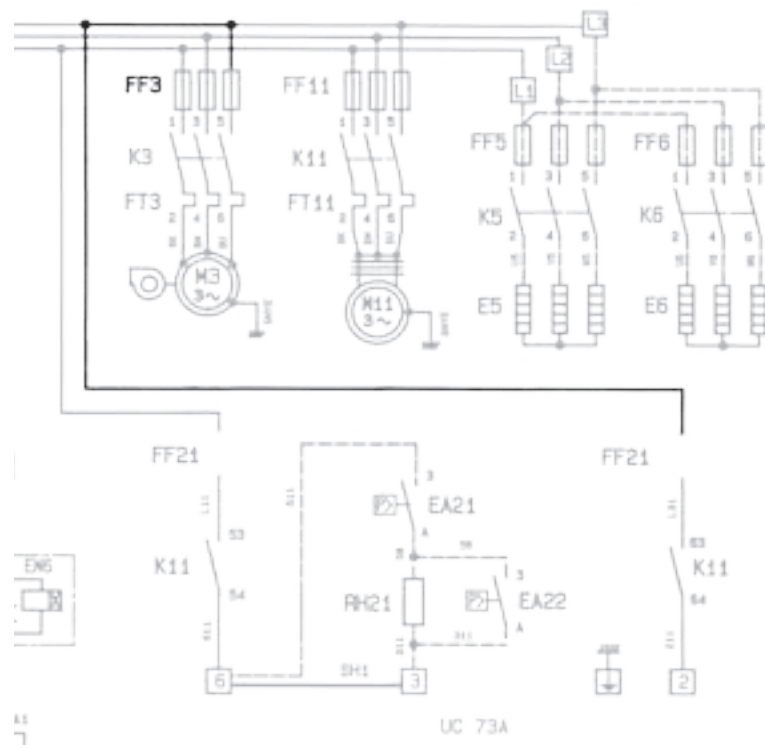
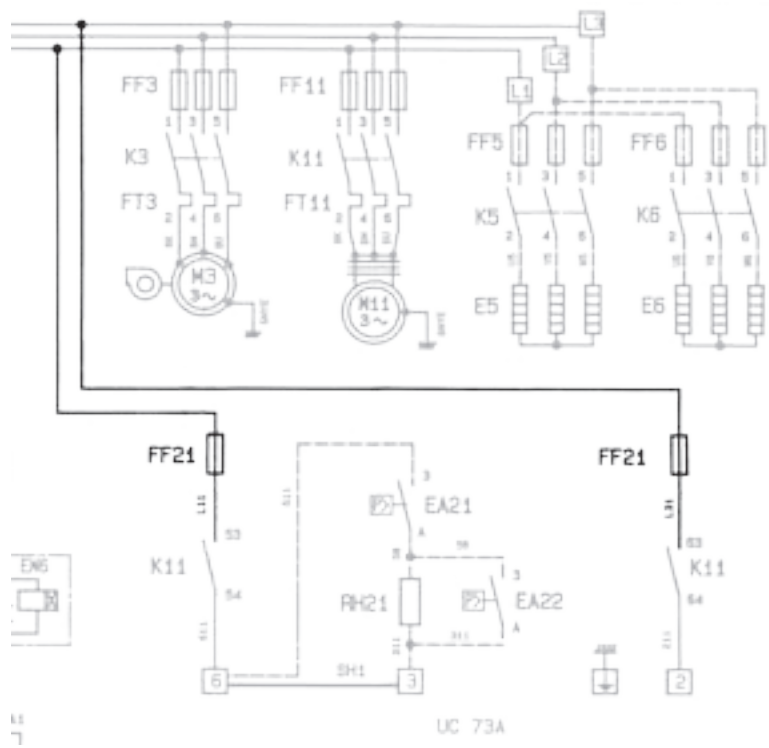
**X1**

XARV 3650/UC104: 8A

1



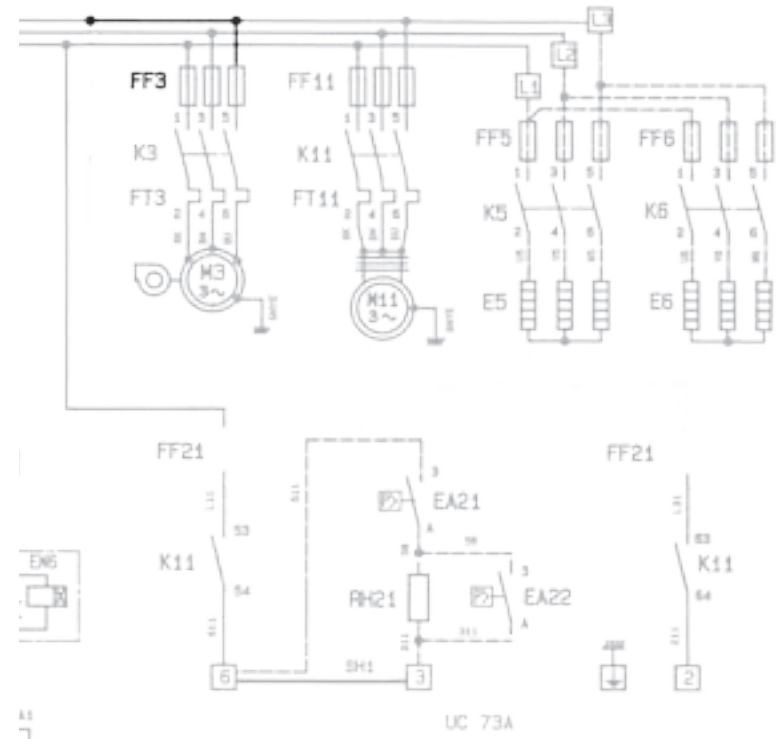
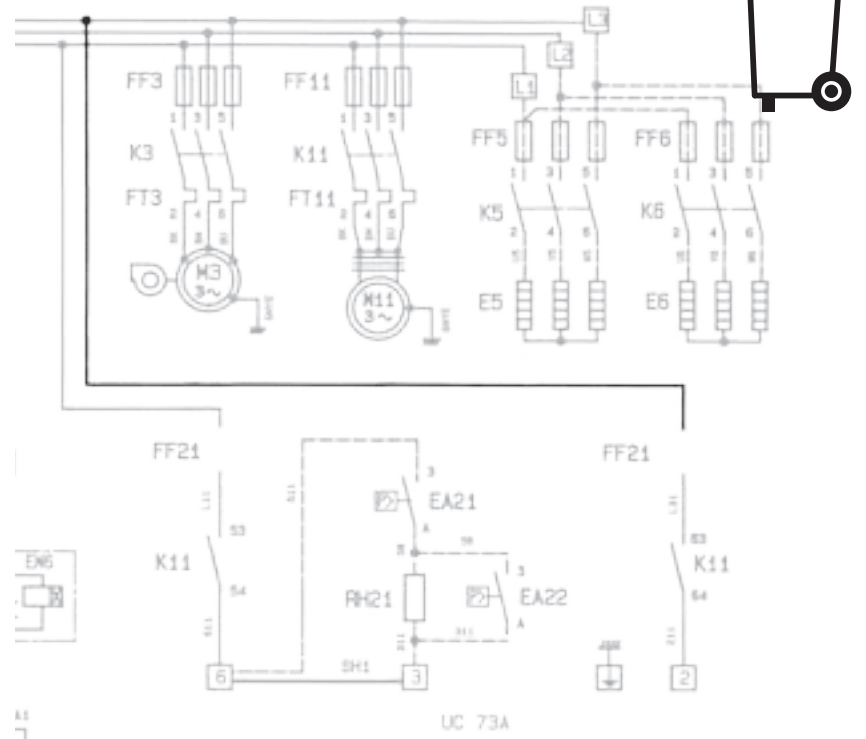
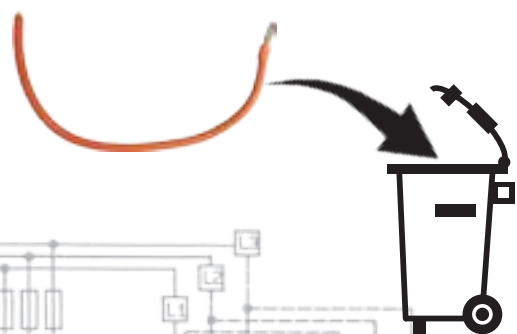
2



3

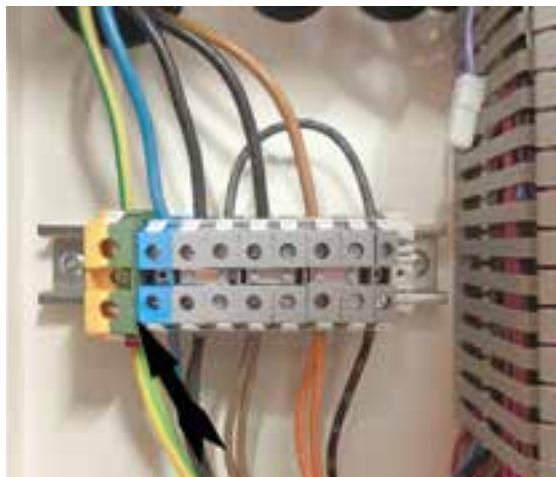


4





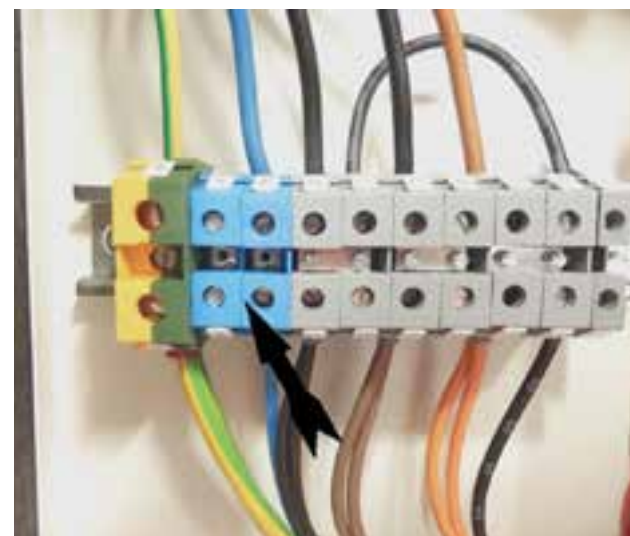
5



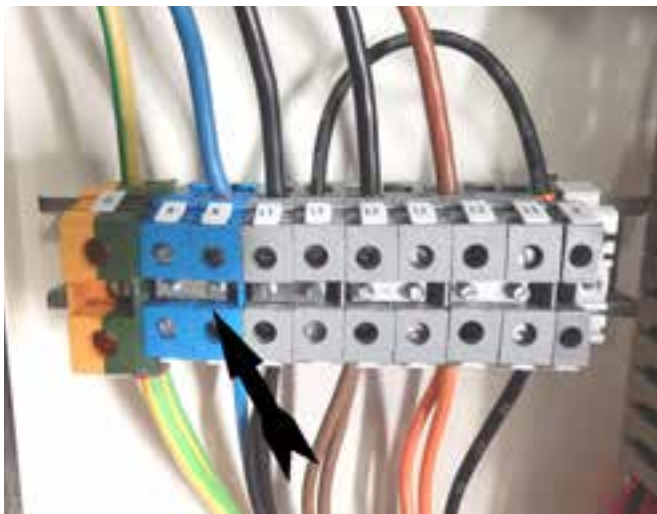
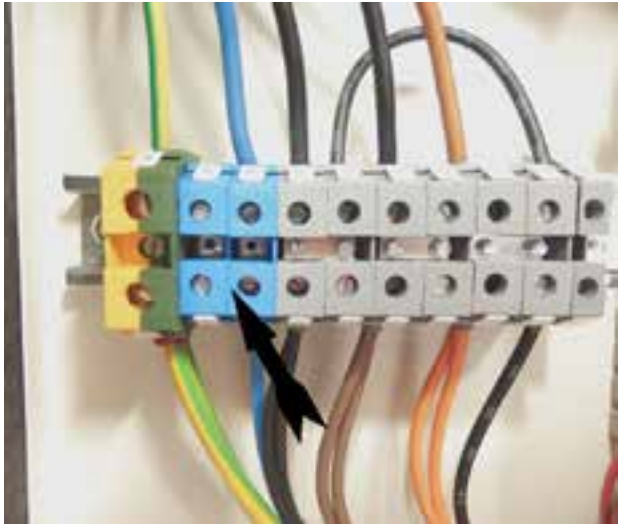
6



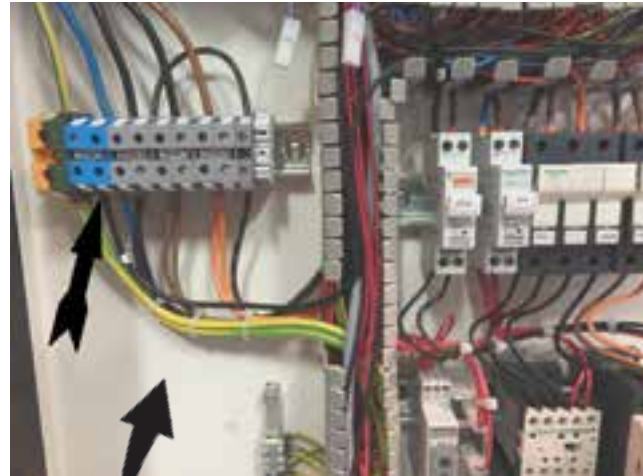
7



8



9



10

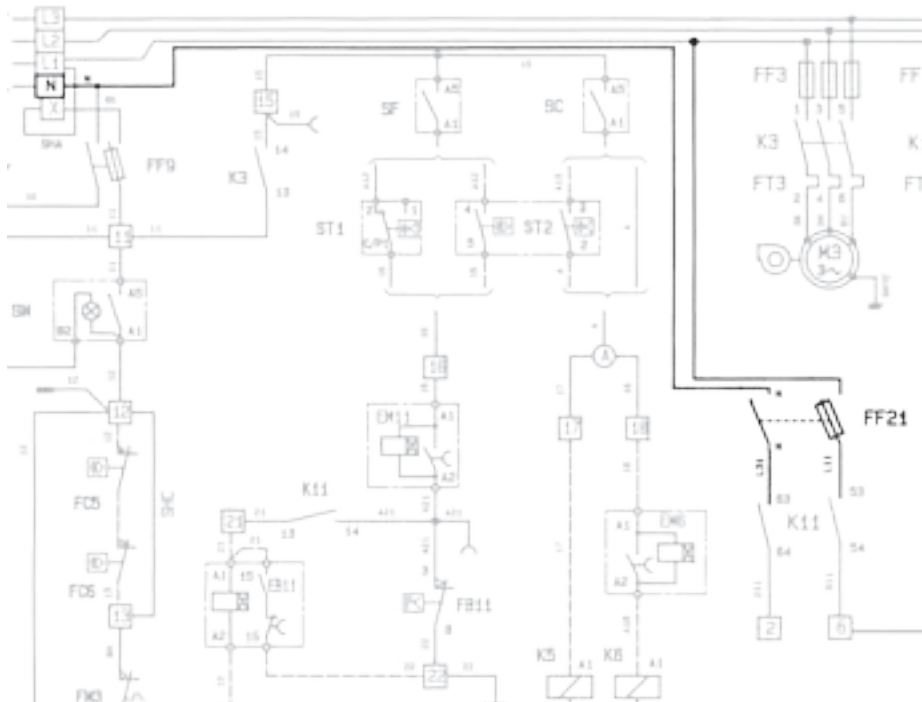
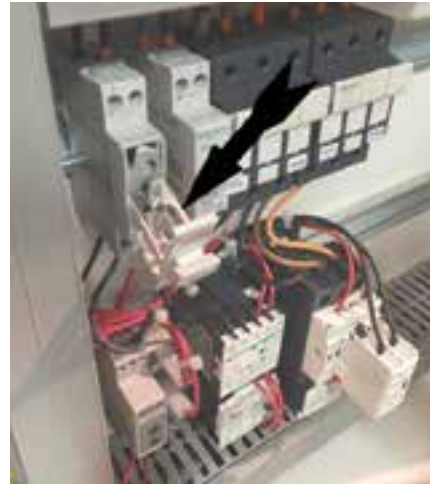





11



12



	<b>UC 74</b>	<b>UC 104</b>
	4 A	8 A