

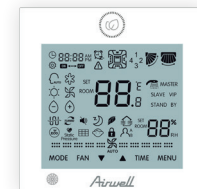
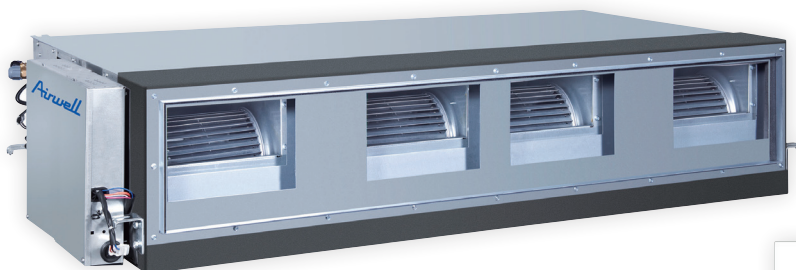


VRF
Indoor units

Airwell

DVHA

High-pressure ducted



RWV05
included

+ PRODUCT

- RWV05 remote control included
- High static pressure and airflow 4050 m³/h
- High power from 5.6 to 28 kW
- Dry contact available



RCV03
(optional)



RWV03
(optional)

FEATURES

TECHNOLOGY



ELECTRONIC
EXPANSION VALVE

FUNCTIONS USERS



I FEEL



PROGRAMMABLE
TIMER



AUTO RESTART
(MEMORY)

INSTALLER FUNCTIONS



DRY CONTACT
ON/OFF

THE + “SUSTAINABLE DEVELOPMENT”

- > Energy savings (mode locking, setpoint limits).

THE + “USER”

- > Static pressure up to 196 Pa to adapt to any type of ventilation network.

THE + “INSTALLER”

- > Possible installation on textile duct.

THE + “TECHNOLOGY”

- > Optimal regulation thanks to its electronic expansion valve.
- > Adaptability to the ventilation network thanks to its adjustable static pressure.

TECHNICAL DATA

INDOOR UNIT		DVHA-280/220N-01M22	
Part number		7VF030017	
Phase		Single phase	
RATED POWER			
Cooling mode	kBtu/h	77.10	95.50
	kW	22.60	28.00
Heating mode	kBtu/h	86.00	107.50
	kW	25.20	31.50
ELECTRICAL PARAMETERS			
Phase/Voltage/Frequency		1P/220-240V/50-60Hz	
PERFORMANCES			
Airflow (TPV/LS/MS/HS)	m ³ /h	4000/3600/3200/2700	4500/4100/3700/3300
Sound pressure (TPV/LS/MS/HS)	dB(A)	53/50/48/46	54/51/49/47
Sound power level (TPV/LS/MS/HS)	dB(A)	67/64/62/60	68/65/63/61
INSTALLATION			
Outline dimensions (WxHxD)	mm	1333x750x497	
Package dimensions (WxHxD)	mm	1558x896x668	
Net weight/Gross weight	kg	87/109	
Liquid pipe diameter	inches	1/2"	
Suction pipe diameter	inches	7/8"	
External static pressure (standard/max.)	Pa	100/300	