

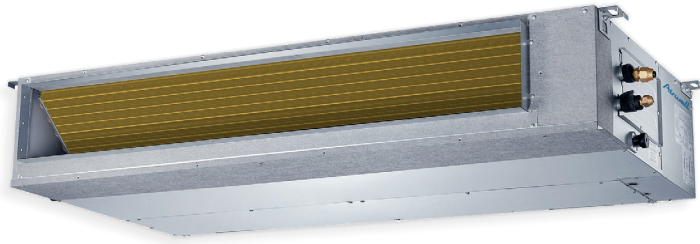


Fixed speed
Reversible

Airwell

DFMD

Medium-pressure ducted



RCW11
included

+ PRODUCT

- RCW11 remote control included
- Low height (210 mm)
- Alarm output and dry contact
- Integrated condensate pump
- Fresh air supply possible
- G1 filter included
- Constant flow control

FEATURES

TECHNOLOGY



GOLDEN FIN
TREATMENT

USER FUNCTIONS



PROGRAMMABLE
TIMER



I FEEL



NIGHT MODE



REMOTE CONTROL
LOCK



AUTO RESTART
(MEMORY)

INSTALLER FUNCTIONS



ERROR CODE VIA
INDOOR UNIT



SELF DIAGNOSTIC



INTEGRATED
CONDENSATE PUMP



ALARM OUTPUT



DRY CONTACT
ON/OFF



TECHNICIAN TEST
MODE

+ “SUSTAINABLE DEVELOPMENT”

> Invisible: blends into all types of interiors.

+ “INSTALLER”

> Adapted to all types of ducts.

+ “TECHNOLOGY”

- > Golden Fin (high corrosion resistance).
- > Self-adjusting static pressure.



Longer product service life:

- > Golden Fin exchanger.
- > Anti-corrosion treatment on PCB.

OPTIONS

ACCESSORY	PART NUMBER	PICTURE	FUNCTION
Wired single control RCW6	7ACEL1704		• Mode, fan speed, real time, timer, temperature, weekly timer and swing.
Wired single control RCW8	7ACEL1706		• Mode, fan speed, timer On/Off, temperature and swing.
Central controller RCW16	7ACEL1707		• Controls up to 64 indoor units with individual setting failure codes indication, On/Off dry contact, last operation memory, ModBus.

The future of air conditioning?
THE INVISIBILITY



Sale out of European Union

TECHNICAL DATA

NEW

INDOOR UNIT		DFMD-050N-01M25	DFMD-070N-01M25	DFMD-100N-01M25	DFMD-100N-01T35	DFMD-140N-01M25	DFMD-160N-01M25
Part number		7SP033080	7SP033081	7SP033082	7SP033083	7SP033084	7SP033085
Phase		Single-phase	Single-phase	Single-phase	Three-phase	Three-phase	Three-phase

DFMD

COOLING

Rated power	kW	5.28	7.03	10.55	10.55	14.07	16.12
Rated power input	kW	1.95	2.7	3.90	3.51	5.35	6.36
EER/Energy label		2.71/D	2.61/D	2.71/D	3.01/B	2.63/D	2.53/E
Operating limits	°C	18°~43° Dry bulb					

HEATING

Rated power	kW	5.57	7.62	11.43	11.72	16.12	17.59
Rated power input	kW	1.65	2.23	3.80	3.44	4.82	5.54
COP/Energy label		3.37/D	3.42/B	3.01/B	3.41/B	3.35/C	3.17/D
Operating limits	°C	-7°~24° Dry bulb					

INDOOR UNIT

Sound pressure level at 1 m (LS/MS/HS)	dB(A)	38/41/44	34.5/38/41	38.5/41.5/45	38/40.5/47	42.0/45.0/48.0	44.4/46.9/51.7
Airflow (LS/MS/HS)	m³/h	740/830/1020	950/1150/1350	950/1280/1700	1149/1372/1804	1400/1800/2150	1490/1850/2400
External static pressure (standard/min.-max.)	Pa	25/0-60	25/0-80	37/0-160	37/0-160	50/0-160	50/0-160
Dehumidification	l/h	2	2	4	4	5	6
Outline dimensions (WxHxD)	mm	880x210x674	1100x249x774	1100x249x774	1100x249x774	1200x300x874	1200x300x874
Package dimensions (WxHxD)	mm	1070x280x725	1305x315x805	1305x315x805	1305x315x805	1405x365x915	1405x365x915
Net weight/Gross weight	kg	23.4/28.8	32.6/39	32.2/39.4	32.2/39.4	46/54.5	46/54.5

OUTDOOR UNIT		YFAD-050R-01M25	YFAD-070R-01M25	YFAD-100R-01M25	YFAD-100R-01T35	YFAD-140R-01T35	YFAD-160R-01T35
Part number		7SP063181	7SP063182	7SP063183	7SP063184	7SP063185	7SP063186
Sound pressure level at 1 m	dB(A)	58.5	60	63	62.5	62	62
Airflow	m³/h	2500	3650	3800	3800	6000	6000
Compressor type		Rotary	Rotary	Rotary	Rotary	Scroll	Scroll
Outline dimensions (WxHxD)	mm	805x554x330	890x673x342	946x810x410	946x810x410	900x1170x350	900x1170x350
Package dimensions (WxHxD)	mm	915x615x370	995x740x398	1090x885x500	1090x885x500	1032x1307x443	1032x1307x443
Net weight/Gross weight	kg	37.8/40.4	52.9/55.9	75.6/80.4	73.0/77.5	98.6/109.3	99.7/111.2

POWER SUPPLY

Phase/Voltage/Frequency		1P/220-240V/50Hz	1P/220-240V/50Hz	1P/220-240V/50Hz	3P/380-415V/50Hz	3P/380-415V/50Hz	3P/380-415V/50Hz
Power supply side		Indoor	Indoor	Outdoor	Outdoor	Indoor	Indoor
Power cable section	mm²	3x2.5	3x2.5	3x4.0	5x2.5	5x2.5	5x2.5
Fuse rating am (D curve)	A	16	32	25	25	32	32
Electrical connections	mm²	3x2.5 + 2x1 + 2x0.75	3x2.5 + 3x1 + 2x0.2	3x1.5 + 3x1	3x1.5 + 3x1	5x2.5 + 3x1	5x2.5 + 3x1

PIPE LINE

Suction pipe diameter	inches	1/2"	5/8"	3/4"	3/4"	3/4"	3/4"
Liquid pipe diameter	inches	1/4"	3/8"	3/8"	3/8"	3/8"	3/8"
Max. length	m	25	25	30	30	50	50
Max. height	m	15	15	20	20	30	30
Refrigerant/GWP		R410A/2088	R410A/2088	R410A/2088	R410A/2088	R410A/2088	R410A/2088
Charge (5 m)	kg	1.3	2.0	2.8	3	3.3	3.3
Additional charge	g/m	15	30	30	30	30	30

MATCHING

INDOOR UNIT	COMPATIBLE WITH OUTDOOR UNIT
DUCTED	MONOSPLIT
 DFMD 050N-070N	 YFAD
 DFMD 100N-160N	 YFAD

GRUPE AIRWELL

10, RUE DU FORT DE SAINT CYR - 78180 MONTIGNY LE BRETONNEUX, FRANCE

TEL: +33 (0)1 76 21 82 00 - www.airwell.com