



DC Inverter
Reversible



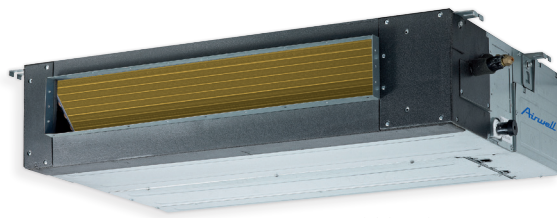
HYBRID
HOUSE by Airwell



Airwell

DDMX

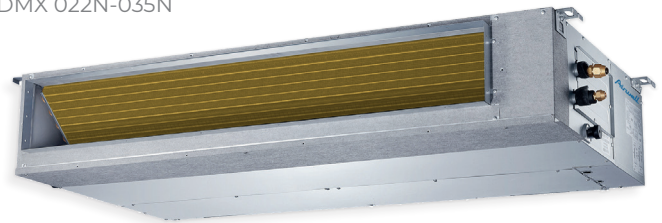
Medium-pressure ducted



DDMX 022N-035N



RCW11 included



DDMX 050N-175N

+ PRODUCT

- RCW11 remote control included
- Discreet
- Compact
- Performance
- Compatible with YDZC and ZDAA multisplits
- Airzone compatible

FEATURES

TECHNOLOGY



FLEXY MATCH



ELECTRONIC EXPANSION VALVE



GOLDEN FIN TREATMENT

AIR QUALITY/CLEAN



ANTIBACTERIAL FILTER



FRESH AIR

USER FUNCTIONS



PROGRAMMABLE TIMER



I FEEL



NIGHT MODE



AUTO RESTART (MEMORY)

CERTIFICATION

- AIRWELL participates in the ECP programme for ACI. Check ongoing validity of certificate:

www.eurovent-certification.com



- Models marked * are not Eurovent certified

+ "SUSTAINABLE DEVELOPMENT"

- > Energy label A++ in cooling mode and A+ in heating mode, guaranteeing energy savings.

+ "USER"

- > Invisible solution that can adapt to all types of interiors.
- > Wide range adapted to your needs.
- > Quiet due to its installation in a false ceiling.

+ "INSTALLER"

- > Compact design, ideal for tight spaces.
- > Static pressure (160 Pa) suitable for long duct lengths.
- > Unit with pre-drilled holes for fresh air supply to the room.
- > Maximum piping length up to 75m adapted to complex and remote installation.

+ "TECHNOLOGY"

- > On/Off contact included associated with a "room card" or other solution (not supplied) for better control and for energy savings.
- > Alarm contact (synthesis fault) included.
- > Room sensor built into the remote control for better comfort ("I Feel" mode by pressing the TURBO button on the remote control for 7 s).
- > Condensate pump included for automatic discharge.
- > Golden Fin treatment on the heat exchangers (external and internal) for protection against corrosion and durability over time.
- > Wide operating range of -15° to 50°C in cooling mode and -15° to 24°C in heating mode.



With LCAC Wi-Fi solar panel in optional

AirHome connectivity

OPTIONS

ACCESSORY	PART NUMBER	PICTURE	FUNCTION
Wireless controller RC18	7ACEL1898		• Fan speed mode, On/Off timer, "I Feel" function, technician test mode.
Wired remote control RCW26	7ACEL1876		• Controls until 16 indoor units.
LCAC Wi-Fi accessory	7ACEL1883		• Accessory for remote control via Wi-Fi.
Insulated air duct plenum	7ACVF0136		• 3 ducts DN160. For DDMX 50.
	7ACVF0137		• 3 ducts DN160. For DDMX 70.
	7ACVF0138		• 3 ducts DN160. For DDMX 90-100.
	7ACVF0139		• 3 ducts DN160. For DDMX 140-175.

WELLZONE:
*ideal temperature
in each room*

This solution works with
the ducted DDMX*.

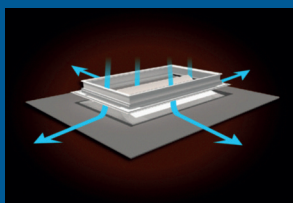
- ▶ Air/air heat pump: **control up to 6 zones** in heating and cooling mode.
- ▶ The air louvers change their position (from 0 to 100%) in accordance with the thermostat (temperature set point) of each room, which **maintains the desired comfort temperature**.
- ▶ Each zone has an **independent remote control** equipped with the "I Feel" system, used to control the ambient temperature and the air louvers.
- ▶ **Invisible** HVAC solution for the whole house.
- ▶ **Cost saving** system (1 single indoor unit).

OPTION 1: YOUR ALL INCLUDEDIVE SOLUTION

REFERENCE	DESCRIPTION	COMPATIBILITY	PART NUMBER
1 WELLZONE 3V	• Control up to 3 zones	DDMX 35-50	7ACEL1805
2 WELLZONE 4V	• Control up to 4 zones	DDMX 35-50	7ACEL1806
3 WELLZONE 4V-5S	• Control up to 4 zones with 5 outputs	DDMX 70-175	7ACEL1807
4 WELLZONE 5V	• Control up to 5 zones	DDMX 70-175	7ACEL1808
5 WELLZONE 5V-6S	• Control up to 5 zones with 6 outputs	DDMX 70-175	7ACEL1903
6 WELLZONE 6V	• Control up to 6 zones	DDMX 70-175	7ACEL1809

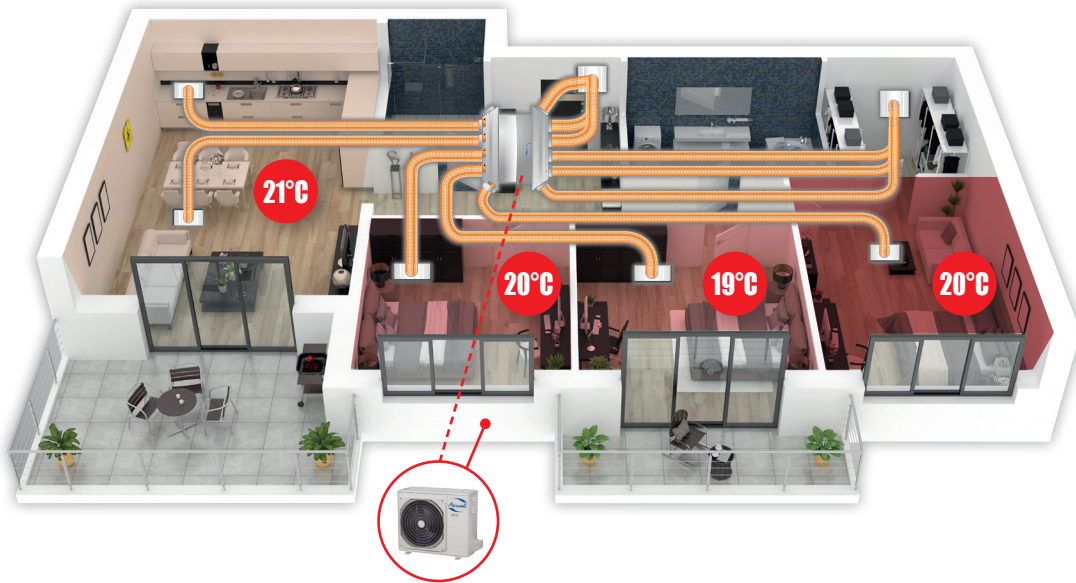
DESCRIPTION	1	2	3	4	5	6
	WELLZONE 3V	WELLZONE 4V	WELLZONE 4V-5S	WELLZONE 5V	WELLZONE 5V-6S	WELLZONE 6V
PACK WZ	QUANTITY	QUANTITY	QUANTITY	QUANTITY	QUANTITY	QUANTITY
Thermostat	3	4	4	5	5	6
Programming timer	1	1	1	1	1	1
Servomotor	3	4	5	5	6	6
Control systems gateway	1	1	1	1	1	1
Supply plenum	1	1	1	1	1	1
Return plenum	1	1	1	1	1	1
ABS plenum grid (400x150 mm)	3	4	5	5	6	6
Double deflection air supply grid in matt white aluminum (400x150 mm)	3	4	5	5	6	6
Steel plenum grid (600x400 mm)	1	1	2	2	2	2
White aluminium return filter holder grid (600x400 mm)	1	1	2	2	2	2
Reducer (250/200 mm)	-	-	1	1	2	2
10m polyester-insulated duct M1 (Ø200 mm)	4	5	7	7	8	8
10m polyester-insulated duct M1 (Ø250 mm)	1	1	2	2	2	2

* In a multisplit configuration, the DDMX is not Wellzone-compatible.

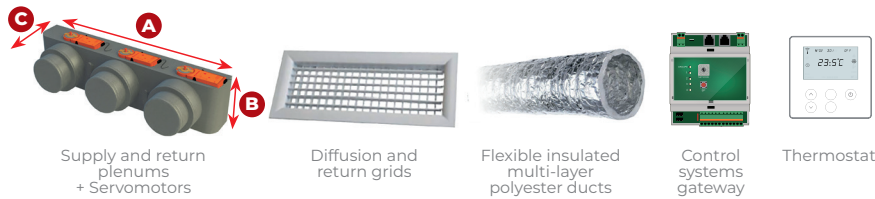


Customize design of air supply grids
according to interior of house.

SIMULATION FOR AN INSTALLATION IN 4 ZONES WITH 5 OUTPUTS / WELLZONE 4V-5S



CONTENTS OF A COMPLETE WELLZONE KIT



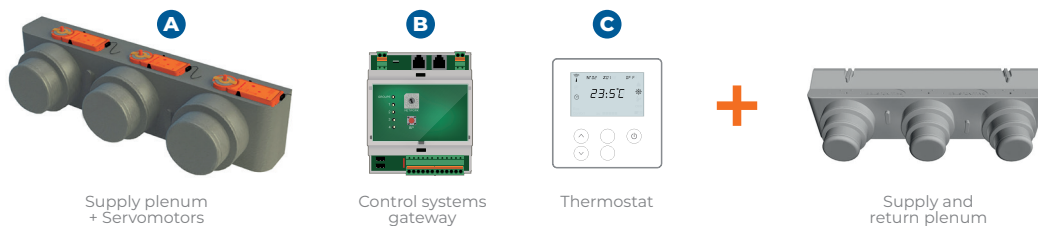
REFERENCE	DUCT DIAMETER (Ø)	DIMENSIONS A x B x C
PLENUM 3S	250 > 200 > 160	1100 x 350 x 411
PLENUM 4S	200 > 160	1100 x 350 x 300
PLENUM 6S	250 & 200 > 160	1621 x 350 x 450

OPTION 2: YOUR CONTROL SYSTEMS GATEWAY SOLUTION

► Adjust according to your needs by selecting the Wellzone pack of your choice (see table below).

The most economic solution

COMPOSITION OF A REGULATION PACK



REFERENCE	DESCRIPTION	COMPATIBILITY	PART NUMBER
PACK WZ 3V	A x1 / B x1 / C x3	DDMX 35-50	7ACEL1810
PACK WZ 4V	A x1 / B x1 / C x4	DDMX 35-50	7ACEL1811
PACK WZ 4V-5S	A x1 / B x1 / C x4	DDMX 70-175	7ACEL1812
PACK WZ 5V	A x1 / B x1 / C x5	DDMX 70-175	7ACEL1813
PACK WZ 5V-6S	A x1 / B x1 / C x5	DDMX 70-175	7ACEL1904
PACK WZ 6V	A x1 / B x1 / C x6	DDMX 70-175	7ACEL1814
Don't forget the supply/return plenum in the composition of your Pack:			
PLENUM 3S	Supply/return plenum	DDMX 35-50	7ACEL1822
PLENUM 4S	Supply/return plenum	DDMX 35-50	7ACEL1823
PLENUM 6S	Supply/return plenum	DDMX 70-175	7ACEL1824

TECHNICAL DATA

INDOOR UNIT	NEW				NEW					
	DDMX-022N-09M25	DDMX-035N-09M25	DDMX-050N-09M25	DDMX-070N-09M25	DDMX-090N-09M25	DDMX-100N-09M25	DDMX-100N-09M25	DDMX-140N-09M25*	DDMX-175N-09M25*	
Part number	7SP033069	7SP033070	7SP033071	7SP033072	7SP033076	7SP033073	7SP033073	7SP033074	7SP033075	
Phase	Single-phase	Single-phase	Single-phase	Single-phase	Single-phase	Single-phase	Three-phase	Three-phase	Three-phase	
COOLING										
Rated power (min./max.)	kW	2.05 (0.31~2.33)	3.52 (0.53~3.99)	5.28 (2.55~5.86)	7.03 (3.28~8.16)	8.79 (2.23~9.85)	10.55 (2.75~11.14)	10.55 (2.73~11.78)	14.07 (3.52~15.53)	15.24 (4.10~17.29)
Pdesignc	kW		3.50	5.40	7.10	8.8	10.50	10.60	14.00	15.30
Rated power input	kW		1.05	1.53	2.19	2.5	3.95	4.00	4.80	5.25
SEER/Energy label			6.3/A++	6.5/A++	6.2/A++	6.5/A++	6.2/A++	6.1/A++	6.1/A++	6.1/A++
Operating limits	°C		-15°~50°C Dry bulb							
HEATING										
Rated power (min./max.)	kW	2.34 (0.62~2.70)	3.81 (1.00~4.39)	5.57 (2.20~6.15)	7.62 (2.81~8.49)	9.38 (2.70~10.02)	11.72 (2.78~12.78)	11.72 (2.78~12.84)	16.12 (4.10~18.17)	18.17 (4.40~20.52)
Pdesighn (average climate)	kW		2.70	4.30	5.40	8	8.40	8.80	8.80	12.50
Pdesighn (warmer climate)	kW		3.40	5.20	6.00	8.20	9.80	10.00	11.50	12.80
Rated power input	kW		1.04	1.51	1.90	2.25	3.25	3.25	4.50	5.15
SCOP/Energy label (average climate)			4.0/A+	4.0/A+	4.0/A+	4.0/A+	4.0/A+	4.0/A+	4.0/A+	4.0/A+
SCOP/Energy label (warmer climate)			5.1/A+++	5.1/A+++	5.1/A+++	5.1/A+++	5.1/A+++	5.1/A+++	5.0/A++	5.1/A+++
Operating limits	°C		-15°~24°C Dry bulb							
Power at -7°C	kW		2.98	4.45	6.13	6.46	9.11	9.18	12.89	13.27
Power at -10°C	kW		2.85	4.25	5.85	6.16	8.69	8.76	12.31	12.67
Power at -15°C	kW		2.67	3.98	5.48	5.77	8.14	8.21	11.53	11.86
INDOOR UNIT										
Sound pressure level at 1 m (LS/MS/HS)	dB(A)	23/27/34/40	23/29/30/34	23/29/30/34	27/37/42/40	40.5/46/48/50.5	42/46/48/49	42/46/48/49	42/47/49/50	47/49/52
Sound level	dB(A)	58	58	58	62	63	61	61	66	66
Airflow (LS/MS/HS)	m³/h	230/340/500	300/480/600	515.2/706/911	825.1/1035/1229	1500/1800/2100	1500/1800/2100	1500/1800/2100	1680/2040/2400	1820/2210/2600
External static pressure (standard/max.)	Pa	25/0-40	25/0-60	25/0-100	25/0-160	37/0-160	37/0-160	37/0-160	50/0-160	50/0-160
Dehumidification	l/h	0.70	1.20	1.80	2.40	3.00	3.60	3.60	4.80	5.50
Outline dimensions (WxHxD)	mm	700x200x506	700x200x506	880x210x674	1100x249x774	1360x249x774	1360x249x774	1360x249x774	1200x300x874	1200x300x874
Package dimensions (WxHxD)	mm	860x285x540	860x285x540	1070x280x725	1305x315x805	1570x300x805	1570x300x805	1570x330x805	1405x365x915	1405x365x915
Net weight/Gross weight	kg	17.8/25.2	17.8/25.2	24.4/30.4	32.3/39.7	40.5/48.3	40.5/48.9	40.5/48.9	47.6/56.5	47.4/56.8
OUTDOOR UNIT										
Part number	-	-	YDAX-035H-09M25	YDAX-050H-09M25	YDAX-070H-09M25	YDAX-090H-09M25	YDAX-100H-09M25	YDAX-100H-09T35	YDAX-140H-09T35	YDAX-175H-09T35
Sound pressure level at 1 m	dB(A)	-	51	54	57	59	59	59	63	63
Sound level	dB(A)	-	62	65	68	70	70	70	74	74
Airflow	m³/h	-	2200	2100	3500	3800	4000	4000	7500	7500
Compressor type		-	Rotary	Rotary	Rotary	Rotary	Rotary	Rotary	Rotary	Rotary
Outline dimensions (WxHxD)	mm	-	765x555x303	805x554x330	890x673x342	946x810x410	946x810x410	946x810x410	952x1333x415	952x1333x415
Package dimensions (WxHxD)	mm	-	887x610x337	915x615x370	995x740x398	1090x885x500	1090x885x500	1090x885x500	1095x1480x495	1095x1480x495
Net weight/Gross weight	kg	-	26.6/29.4	32.5/35.3	43.9/46.7	52.8/57.3	66.9/72.1	75.5/85.6	103.7/118.3	107.0/121.2
POWER SUPPLY										
Phase/Voltage/Frequency		1P/220-240V/50Hz	1P/220-240V/50Hz	1P/220-240V/50Hz	1P/220-240V/50Hz	1P/220-240V/50Hz	1P/220-240V/50Hz	3P/380-415V/50Hz	3P/380-415V/50Hz	3P/380-415V/50Hz
Power supply side			Outdoor	Outdoor	Outdoor	Outdoor	Outdoor	Outdoor	Outdoor	Outdoor
Power cable section	mm²		3G1.5	3G1.5	3G2.5	3G4.0	3G4.0	5G2.5	5G2.5	5G2.5
Fuse rating am	A		16	16	20	25	25	16	16	16
Electrical connections in/out	mm²	4G1.5	4G1.5	4G1.5	4G1.5	4G1.5	4G1.5	4G1.5	4G1.5	4G1.5
PIPE LINE										
Suction pipe diameter	inches	3/8"	3/8"	1/2"	5/8"	5/8"	5/8"	5/8"	5/8"	5/8"
Liquid pipe diameter	inches	1/4"	1/4"	1/4"	3/8"	3/8"	3/8"	3/8"	3/8"	3/8"
Max. length	m		25	30	50	50	75	75	75	75
Max. height	m		10	20	25	25	30	30	30	30
Refrigerant/GWP			R32/675	R32/675	R32/675	R32/675	R32/675	R32/675	R32/675	R32/675
Charge (5 m)	kg		0.72	1.15	1.50	2.00	2.40	2.40	2.90	3.00
Additional charge	g/m		12	12	24	24	24	24	24	24

MATCHING

INDOOR UNIT	COMPATIBLE WITH OUTDOOR UNIT			
	DUCTED		MONOSPLIT	MULTISPLIT
 DDMX 022N			 ZDAA	 YDZC
 DDMX 035N-050N-070N		 YDAX	 ZDAA	 YDZC

MATCHING

INDOOR UNIT	COMPATIBLE WITH OUTDOOR UNIT
	MONOSPLIT
 DDMX 90N-100N	 YDAX
 DDMX 140N & 175N	 YDAX