



Domestic hot water production

Airwell

TFHZ ELEO

Solar thermodynamic water heater

A⁺⁺

HYBRID
HOUSE by Airwell

Stainless steel tank

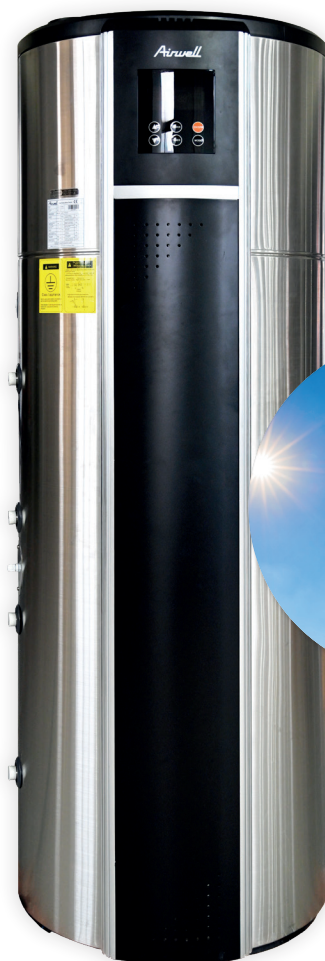
+ PRODUCT

- Excellent COP
- Stainless steel tank
- Small footprint
- Anti-legionella function
- No refrigerant handling

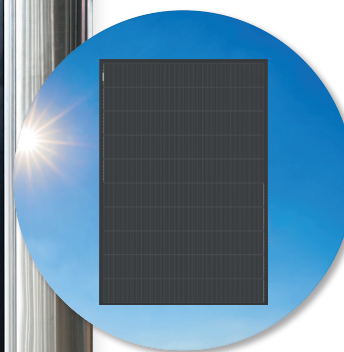
FEATURES



DOMESTIC HOT WATER



TFHZ



⊕ «SUSTAINABLE DEVELOPMENT»

- > High energy class A++.
- > High-performance product.
- > Product 3 to 4 times more economical than an electric tank.

⊕ «USER»

- > Perfect to replace an electric tank.
- > "Peak/Off peak" operation.

⊕ «INSTALLER»

- > Easy to install, thanks to its compact footprint.
- > Easy handling, thanks to its low weight < 80 kg.
- > Anti-scale protection: stainless steel tank + magnesium anode.

⊕ «TECHNOLOGY»

- > No risk of contamination following a refrigerant leak, thanks to the external exchanger.

TECHNICAL DATA

TFHZ Eleo

INDOOR UNIT		TFHZ-300S-03M25
Part number		7MBI70004
Phase		Single phase
AIR +7°C WATER 10/55°C		
Heating capacity	kW	1.90
Input power	kW	0.60
COP		3.15
AIR +15°C WATER 10/55°C		
Heating capacity	kW	2.45
Input power	kW	0.67
COP		3.68
ERP PERFORMANCE (AVERAGE CLIMATE)		
DHW profil		L
Energy class		A++
Energetic efficiency	%	174
COP		4.12
Annual consumption	kWh	587
Heat up time	h:mm	7:49
Standby power input	W	27
Reference hot water temperature	°C	51.80
Volume of mixed water at 40°C	l	387
ERP PERFORMANCE (WARMER CLIMATE)		
Energetic efficiency	%	191
Annual consumption	kWh	533
ERP PERFORMANCE (COLDER CLIMATE)		
Energetic efficiency	%	133
Annual consumption	kWh	766
SOUND LEVELS		
Sound pressure level (1m)	dB(A)	48
Sound power level	dB(A)	59
OPERATING RANGE		
Outdoor air temperature	°C	-7 / 43
Maximum water temperature	°C	70
SOLAR CIRCUIT		
Exchanger area	m ²	1
Connection	inches	3/4"
Material		Stainless steel
REFRIGERATION CIRCUIT		
Refrigerant/GWP		R134a/1430
Factory charge	kg	1.10
POWER SUPPLY		
Phase/Voltage/Fréquence		1P/220-240/50Hz
Electric heater	kW	2
Power cable	mm ²	3x2.5
Fuse breaker	A	16
DIMENSIONS		
Outline dimensions (HxØ)		1915x646
Package dimensions (WxHxD)		710x2050x710
Net weight/Gross weight	kg	92/114