



Domestic hot water production

Airwell

# TDF ELEO

## Thermodynamic water heater

A+

**HYBRID**  
HOUSE by Airwell



### + PRODUCT

- Excellent COP
- Small footprint
- Anti-legionella function
- No refrigerant handling
- Limescale protection

### FEATURES

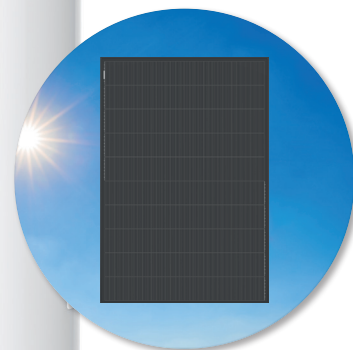


DOMESTIC HOT WATER



TDF

TDF SOLAR



AirHome connectivity

#### + «SUSTAINABLE DEVELOPMENT»

- > High energy class A+.
- > High-performance product with COP > 4.
- > Product 3 to 4 times more economical than an electric tank.

#### + «USER»

- > Perfect to replace an electric tank.
- > "Peak/Off peak" operation.

#### + «INSTALLER»

- > Easy to install thanks to its compact footprint.
- > Narrow diameter, fits through any doors.
- > Built-in limescale protection (electronic anode).

#### + «TECHNOLOGY»

- > No risk of contamination following a refrigerant leak, thanks to the external exchanger.

### ACCESSORIES/OPTIONS

#### ACCESSORY

#### PART NUMBER

Adapter kit, 90° bend and 1m duct (TDF 190)

7ACELI735

Adapter kit, 90° bend and 1m duct (TDF 300)

7ACELI737

Extention kit 1m duct (TDF 190)

7ACELI736

Extention kit 1m duct (TDF 300)

7ACELI738

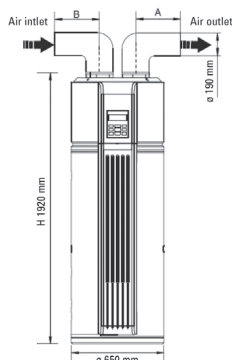
## TECHNICAL DATA

TDFE160

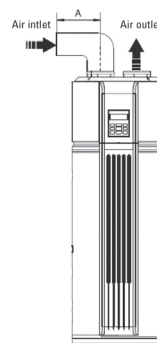
INDOOR UNITS		AW-TDF190-H31	AW-TDF300-H31	AW-TDF190S-H31	AW-TDF300S-H31
<b>Part number</b>		<b>7HP030016</b>	<b>7HP030017</b>	<b>7HP030018</b>	<b>7HP030019</b>
<b>Phase</b>		Single-phase	Single-phase	Single-phase	Single-phase
<b>AIR +7°C WATER 10/55°C</b>					
Heating capacity	kW	1.362	1.814	1.362	1.814
Totale power input	kW	0.423	0.519	0.423	0.519
<b>COP</b>		<b>3.22</b>	<b>3.49</b>	<b>3.22</b>	<b>3.49</b>
<b>AIR +15°C WATER 10/55°C</b>					
Heating capacity	kW	1.609	2.185	1.609	2.185
Totale power input	kW	0.439	0.541	0.439	0.541
<b>COP</b>		<b>3.66</b>	<b>4.04</b>	<b>3.66</b>	<b>4.04</b>
<b>PERFORMANCE (AVERAGE CLIMATE)</b>					
DHW profil		L	XL	L	XL
<b>Energy label</b>		<b>A+</b>	<b>A+</b>	<b>A+</b>	<b>A+</b>
Seasonal efficiency	%	115	123	115	123
<b>COP</b>		<b>2.76</b>	<b>3.01</b>	<b>2.76</b>	<b>3.01</b>
Annual consumption	kWh	890	1361	890	1361
Heating time	h:mm	7:01	7:49	7:01	7:49
Standby power consumption	W	26.3	30.6	26.3	30.6
Reference hot water temperature	°C	53.8	53.1	53.8	53.1
DHW volume	l	176	284	168	272
Mixed water at 40 °C	l	234	354	234	354
<b>PERFORMANCE (WARMER CLIMATE)</b>					
Seasonal efficiency	%	130	148	130	148
<b>COP</b>		<b>3.13</b>	<b>3.59</b>	<b>3.13</b>	<b>3.59</b>
Annual consumption	kWh	785	1131	785	1131
<b>PERFORMANCE (COOLER CLIMATE)</b>					
Seasonal efficiency	%	99	95	99	95
<b>COP</b>		<b>2.36</b>	<b>2.32</b>	<b>2.36</b>	<b>2.32</b>
Annual consumption	kWh	1032	1759	1032	1759
<b>SOUND LEVEL</b>					
Sound pressure level (1m)	dB(A)	36.60	38.20	36.60	38.20
Sound level	dB(A)	51	53	51	53
<b>OPERATING LIMITS</b>					
Outdoor temperature (min./max.)	°C	-7° / 43°	-7° / 43°	-7° / 43°	-7° / 43°
Max. water temperature (with heat pump)	°C	70	65	70	65
<b>REFRIGERANT INFORMATION</b>					
<b>Refrigerant/GWP</b>		<b>R134A/1430</b>	<b>R134A/1430</b>	<b>R134A/1430</b>	<b>R134A/1430</b>
Charge	kg	1.10	1.50	1.10	1.50
<b>POWER SUPPLY</b>					
Phase/Voltage/Frequency		1P/220-240/50Hz	1P/220-240/50Hz	1P/220-240/50Hz	1P/220-240/50Hz
Electric backup heater	kW	3	3	3	3
Power cable	mm <sup>2</sup>	3x4	3x4	3x4	3x4
Max. current	A	30	30	30	30
<b>DIMENSIONS</b>					
Size (HxØ)	mm	1830x560	1930x650	1830x560	1930x650
Package dimensions (WxHxD)	mm	680x2070x680	775x2200x745	680x2070x680	775x2200x745
Net weight/Gross weight	kg	92/114	114/138	109/131	134/158
<b>SOLAR EXCHANGER SURFACE AREA</b>					
Dimension	m <sup>2</sup>	-	-	1.1	1.3
<b>FAN</b>					
Type		centrifugal	centrifugal	centrifugal	centrifugal
Airflow	m <sup>3</sup> /h	270	414	270	414
Static pressure	Pa	25	45	25	45



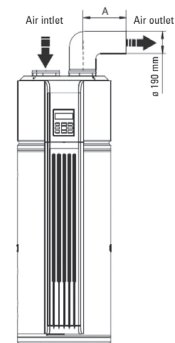
### 1 Inlet and outlet ducted



### 2 Inlet ducted



### 3 Outlet ducted



<b>TROOM TYPE FOR INSTALLATION</b>	<ul style="list-style-type: none"> <li>• Heated low volume room (&lt; 20 m<sup>3</sup>)</li> </ul>	<ul style="list-style-type: none"> <li>• Low volume room (&lt; 20 m<sup>3</sup>) and which can be cooled</li> </ul>	<ul style="list-style-type: none"> <li>• Heated high volume room (&gt; 20 m<sup>3</sup>) (kitchen, bathroom...)</li> </ul>
<b>AIR INLET AND AIR OUTLET</b>	<ul style="list-style-type: none"> <li>• Air inlet: outdoor air</li> <li>• Air outlet: to adjacent room or outdoors</li> </ul>	<ul style="list-style-type: none"> <li>• Air inlet: outdoor air</li> <li>• Air outlet: in the room (ambient air)</li> </ul>	<ul style="list-style-type: none"> <li>• Air inlet: ambient air</li> <li>• Air outlet: to adjacent room or outdoors</li> </ul>

**GROUPE AIRWELL**

10, RUE DU FORT DE SAINT CYR - 78180 MONTIGNY LE BRETONNEUX, FRANCE

TEL.: +33 (0)1 76 21 82 00 - www.airwell.com