

DC Inverter  
Cooling & Heating

# YDZC RESIDENTIAL MULTISPLIT



## + PRODUCTS

- Efficient.
- Competitive.
- Flexible.
- Golden fins.

## FEATURES

### TECHNOLOGY:



DC INVERTER



R32 FLUID



ELECTRONIC EXPANSION VALVE



GOLDEN FIN TREATMENT

### INSTALLER FUNCTIONS:



SELF DIAGNOSTIC

- Same indoor for multi and single application.
- Design for long unit distance installation.
- 2 digit display to check running parameters.
- Longer product lifetime: golden fins exchanger and anti-corrosion treatment on PCB.

COMPATIBLE WITH

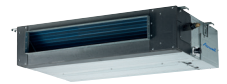
HIGH WALL HDH  
9/12/18/24



HIGH WALL HKD  
R32 9/12/18/24



DUCTED MEDIUM STATIC PRESSURE DDM  
12/18



CASSETTE CDM  
9X/12/18



CONSOLE XDM  
12X/18



**Golden fins: anti-corrosion protection on the exchanger**



## YDZC TECHNICAL DATA

Outdoor unit			AW-YDZC218-H91	AW-YDZC327-H91	AW-YDZC436-H91	AW-YDZC542-H91
Phase			Single phase	Single phase	Single phase	Single phase
<b>OUTDOOR UNIT</b>						
Cooling	Rated power (min./max.)	kW	5.2 (2.08-6.29)	7.9 (2.77-8.69)	10.5 (3.68-13.65)	12.3 (4.18 - 14)
	Pdesignc	kW	5.2	8.0	10.6	12.4
	Rated power input	kW	1.60	2.44	3.28	4.26
	SEER/Energy label		5.6/A+	6.1/A++	6.2/A++	6.1/A++
	Operating limits	°C	-15°/50° Dry bulb			
Heating	Rated power (min./max.)	kW	5.57 (2.23-6.74)	8.2 (2.87-9.02)	11.1 (3.89-13.32)	12.30 (4.18-14)
	Pdesignh (average climate)	kW		5.60	9.00	9.20
	Rated power input	kW	1.39	2.18	2.77	3.10
	SCOP/Energy label (average climate)		3.8/A	3.8/A	3.8/A	3.5/A
	Operating limits	°C	-15°/24° Dry bulb			
Sound pressure level to 1 m	dB(A)	56	59	63	64	
Sound power level	dB(A)	63	65	67	69	
Airflow	m³/h	2200	2700	4000	3850	
Compressor type		Rotary	Rotary	Rotary	Rotary	
Outline dimensions (WxHxD)	mm	800x554x333	845x702x363	946x810x410	946x810x410	
Package dimensions (WxHxD)	mm	920x615x390	965x765x395	1090x875x500	1090x875x500	
Net weight/Gross weight	kg	36/39	54.4/59.2	68.8/75.6	73.3/80.4	
Part number		7SP091181	7SP091182	7SP091183	7SP091184	
<b>POWER SUPPLY</b>						
Phase/Voltage/Frequency		1P/230V/50Hz	1P/230V/50Hz	1P/230V/50Hz	1P/230V/50Hz	
Power supply side		Outdoor	Outdoor	Outdoor	Outdoor	
Power cable section	mm²	3x2.5	3x2.5	3x2.5	3x4	
Fuse rating am (D curve)	A	25	25	25	32	
Electrical connections	mm²	2 x (4x1.5)	3 x (4x1.5)	4 x (4x1.5)	5 x (4x1.5)	
<b>PIPE LINE</b>						
Suction pipe diameter	inches	2x3/8"	3x3/8"	3x3/8"+1x1/2"	4x3/8"+1x1/2"	
Liquid pipe diameter	inches	2x1/4"	3x1/4"	4x1/4"	5x1/4"	
Max. length	m	40	60	80	80	
Max. length per circuit	m	25	30	35	35	
Max. height between indoor and outdoor units	ODU higher than IDU	m	15	15	15	15
	ODU lower than IDU	m	15	15	15	15
Max. height between indoor units	m	10	10	10	10	
Refrigerant/GWP	kg	R32/675	R32/675	R32/675	R32/675	
Charge	kg	1,3	1,57	2,1	2,4	

HIGH WALL  
HDH 9/12/18/24



### HDH INDOOR UNITS TECHNICAL DATA

Indoor unit		AW-HDH009-N91	AW-HDH012-N91	AW-HDH018-N91	AW-HDH024-N91
Phase		Single phase	Single phase	Single phase	Single phase
Cooling rated capacity	kW	2.69	3.52	5.28	7.32
Heating rated capacity	kW	2.93	3.81	5.56	7.61
Sound pressure level to 1 m (VL/LS/MS/HS)	dB(A)	21/22/29/37	21/22/30/38	24/27/33/42	26/30/40/46
Sound power level	dB(A)	53	55	57	60
Airflow (LS/MS/HS)	m³/h	259/429/521	294/478/539	420/505/750	560/750/1050
Dehumidification	l/h	1	1.2	1.7	2.4
Outline dimensions (WxHxD)	mm	722x290x187	802x297x189	965x319x215	1080x335x226
Package dimensions (WxHxD)	mm	790x370x270	875x375x285	1045x405x305	1155x415x315
Net weight/Gross weight	kg	7.4/9.6	8.2/10.7	9/12.2	12/15.2
<b>PIPE LINE</b>					
Suction pipe diameter	inches	3/8"	3/8"	1/2"	5/8"
Liquid pipe diameter	inches	1/4"	1/4"	1/4"	3/8"
Part number		7SP023141	7SP023142	7SP023143	7SP023144

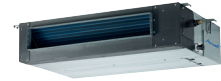
HIGH WALL HKD  
R32 9/12/18/24



### HKD R32 INDOOR UNITS TECHNICAL DATA

Indoor unit		AW-HKD009-N91	AW-HKD012-N91	AW-HKD018-N91	AW-HKD024-N91
Phase		Single phase	Single phase	Single phase	Single phase
Cooling rated capacity	kW	2.64	3.52	5.28	7.03
Heating rated capacity	kW	2.93	3.81	5.57	7.33
Sound pressure level to 1 m (VL/LS/MS/HS)	dB(A)	21/26/30/40	22/26/34/40	25/30/37/44	28/34/42/44
Sound power level	dB(A)	53	53	55	59
Airflow (LS/MS/HS)	m³/h	360/460/520	360/500/600	540/680/840	662/817/980
Outline dimensions (WxHxD)	mm	805x285x194	805x285x194	957x302x213	1040x327x220
Package dimensions (WxHxD)	mm	870x360x270	870x360x270	1035x380x295	1120x405x310
Net weight/Gross weight	kg	7.5/9.7	7.5/9.7	10/13	12.3/15.8
<b>PIPE LINE</b>					
Suction pipe diameter	inches	3/8"	3/8"	1/2"	5/8"
Liquid pipe diameter	inches	1/4"	1/4"	1/4"	3/8"
Part number		7SP023135	7SP023136	7SP023137	7SP023138

DUCTED MEDIUM STATIC  
PRESSURE DDM 12/18



## DDM INDOOR UNITS TECHNICAL DATA

Indoor unit		AW-DDM012-N91	AW-DDM018-N91
Phase		Single phase	Single phase
Cooling rated capacity	kW	3.52	5.28
Heating rated capacity	kW	4.10	5.86
Sound pressure level to 1 m (LS/MS/HS)	dB(A)	26/30/35	33/38/41
Sound power level	dB(A)	56	59
Airflow (LS/MS/HS)	m³/h	300/480/600	350/650/880
External static pressure (standard/max.)	Pa	25 (0-60)	25 (0-100)
Dehumidification	l/h	1.5	2.0
Outline dimensions (WxHxD)	mm	700x200x450	880x210x674
Package dimensions (WxHxD)	mm	860x285x540	1070x280x725
Net weight/Gross weight	kg	18/22	24.3/29.6
<b>PIPE LINE</b>			
Suction pipe diameter	inches	3/8"	1/2"
Liquid pipe diameter	inches	1/4"	1/4"
Part number		7SP033031	7SP033032

CASSETTE  
CDM 9X/12/18



CONSOLE  
XDM 12X/18



## CDM & XDM INDOOR UNITS TECHNICAL DATA

Indoor unit		AW-CDM009X-N91	AW-CDM012-N91	AW-CDM018-N91	AW-XDM012X-N91	AW-XDM018-N91
Phase		Single phase	Single phase	Single phase	Single phase	Single phase
Cooling rated capacity	kW	2.6	3.52	5.28	3.5	4.82
Heating rated capacity	kW	2.9	4.4	5.42	3.8	4.98
Sound pressure level to 1 m (LS/MS/HS)	dB(A)	31/34/39	33/36/41	35/39/42	35/41/43	35/39/42
Sound power level	dB(A)	54	56	56	58	60
Airflow (LS/MS/HS)	m³/h	400/504/580	416/504/617	540/625/720	370/480/512	400/480/560
Dehumidification	l/h	1.2	1.5	2	1.5	2
Outline dimensions (WxHxD)	mm	570x260x570	570x260x570	570x260x570	700x600x210	700x600x210
Package dimensions (WxHxD)	mm	662x317x662	662x317x662	662x317x662	810x710x305	810x710x305
Net weight/Gross weight	kg	14.5/17.3	16.2/21.4	16.2/21.4	14.8/19	14.8/19.1
<b>FRAME</b>						
Outline dimensions (WxHxD)	mm	647x50x647	647x50x647	647x50x647		
Package dimensions (WxHxD)	mm	715x123x715	715x123x715	715x123x715		
Net weight/Gross weight	kg	2.5/4.5	2.5/4.5	2.5/4.5		
Frame part number		7ACVF0566	7ACVF0566	7ACVF0566		
<b>PIPE LINE</b>						
Suction pipe diameter	inches	3/8"	3/8"	1/2"	3/8"	1/2"
Liquid pipe diameter	inches	1/4"	1/4"	1/4"	1/4"	1/4"
Part number		7SP042261X	7SP042262	7SP042263	7SP071413X	7SP071414

COMPATIBLE  
WITH

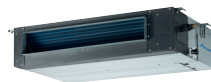
HIGH WALL HDH  
9/12/18/24



HIGH WALL HKD  
R32 9/12/18/24



DUCTED MEDIUM STATIC  
PRESSURE DDM 12/18



CASSETTE CDM  
9X/12/18



CONSOLE  
XDM 12X/18



## YDZC2-18 RESIDENTIAL MULTISPLIT DUO

Indoor unit combinations	COOLING									HEATING								
	Rated power (kW)		Total power (kW)			Total input power (kW)			EER/ Energy label	Rated power (kW)		Total power (kW)			Total input power (kW)			COP/ Energy label
	Unit A	Unit B	Min.	Rated	Max.	Min.	Rated	Max.		Unit A	Unit B	Min.	Rated	Max.	Min.	Rated	Max.	
9+9	2.60	2.60	2.08	5.20	6.29	0.58	1.60	2.01	3.24/A++	2.79	2.79	2.23	5.57	6.74	0.49	1.39	1.88	4.00/A+
9+12	2.23	2.97	2.08	5.20	6.29	0.58	1.60	2.01	3.24/A++	2.39	3.18	2.23	5.57	6.74	0.49	1.39	1.88	4.00/A+
12+12	3.56	3.56	2.21	7.12	7.66	0.63	2.20	2.63	3.24/A++	3.76	3.76	2.30	7.53	7.95	0.57	2.02	2.36	3.73/A

Based on wall mounted combination

## YDZC3-27 RESIDENTIAL MULTISPLIT TRIO

Indoor unit combinations	COOLING									HEATING										
	Rated power (kW)			Total power (kW)			Total input power (kW)			EER/ Energy label	Rated power (kW)			Total power (kW)			Total input power (kW)			COP/ Energy label
	Unit A	Unit B	Unit C	Min.	Rated	Max.	Min.	Rated	Max.		Unit A	Unit B	Unit C	Min.	Rated	Max.	Min.	Rated	Max.	
9+9	2.68	2.68	-	2.21	5.37	7.11	0.63	1.66	2.44	3.23/A++	3.01	3.01	-	2.30	6.01	7.38	0.57	1.65	2.18	3.65/A
9+12	2.68	3.57	-	2.21	6.24	7.51	0.63	1.93	2.56	3.23/A++	2.90	3.87	-	2.30	6.77	7.79	0.57	1.83	2.29	3.69/A
9+18	2.63	5.27	-	2.21	7.90	7.90	0.63	2.44	2.68	3.24/A++	2.73	5.47	-	2.30	8.20	8.20	0.57	2.18	2.40	3.76/A
12+12	3.56	3.56	-	2.21	7.12	7.66	0.63	2.20	2.63	3.24/A++	3.76	3.76	-	2.30	7.53	7.95	0.57	2.02	2.36	3.73/A
12+18	3.16	4.74	-	2.21	7.90	7.90	0.63	2.44	2.68	3.24/A++	3.28	4.92	-	2.30	8.20	8.20	0.57	2.18	2.40	3.76/A
9+9+9	2.63	2.63	2.63	2.77	7.90	8.69	0.76	2.44	2.90	3.24/A++	2.73	2.73	2.73	2.87	8.20	9.02	0.68	2.18	2.66	3.76/A+
9+9+12	2.37	2.37	3.16	2.77	7.90	8.69	0.76	2.44	2.90	3.24/A++	2.46	2.46	3.28	2.87	8.20	9.02	0.68	2.18	2.66	3.76/A+
9+12+12	2.15	2.87	2.87	2.77	7.90	8.69	0.76	2.44	2.90	3.24/A++	2.24	2.98	2.98	2.87	8.20	9.02	0.68	2.18	2.66	3.76/A+
12+12+12	3.50	3.50	3.50	2.84	10.50	11.55	0.78	3.25	3.58	3.23/A++	3.70	3.70	3.70	3.00	11.10	12.21	0.66	2.77	3.04	4.01/A

Based on wall mounted combination





**YDZC4-36 RESIDENTIAL MULTISPLIT QUATTRO**

Indoor unit combinations	COOLING											HEATING										
	Rated power (kW)				Total power (kW)			Total input power (kW)			EER/ Energy label	Rated power (kW)				Total power (kW)			Total input power (kW)		COP/ Energy label	
	Unit A	Unit B	Unit C	Unit D	Min.	Rated	Max.	Min.	Rated	Max.		Unit A	Unit B	Unit C	Unit D	Min.	Rated	Max.	Min.	Rated		Max.
9+9	2.69	2.69	-	-	2.21	5.38	6.83	0.62	1.73	2.44	3.12/A++	3.07	3.07	-	-	2.33	6.14	7.22	0.53	1.63	2.08	3.77/A
9+12	2.69	3.58	-	-	2.21	6.27	7.35	0.62	2.00	2.60	3.14/A++	3.00	4.00	-	-	2.33	7.00	7.77	0.53	1.84	2.21	3.81/A
9+18	2.68	5.36	-	-	2.21	8.04	9.45	0.62	2.53	2.93	3.18/A++	2.91	5.81	-	-	2.33	8.72	9.99	0.53	2.24	2.49	3.89/A
9+24	2.65	7.06	-	-	2.21	9.71	9.98	0.62	3.02	3.12	3.21/A++	2.82	7.52	-	-	2.33	10.34	10.66	0.53	2.60	2.63	3.97/A
12+12	3.58	3.58	-	-	2.21	7.15	7.88	0.62	2.27	2.76	3.16/A++	3.93	3.93	-	-	2.33	7.86	8.33	0.53	2.04	2.35	3.85/A
12+18	3.57	5.36	-	-	2.21	8.93	9.98	0.62	2.79	2.93	3.20/A++	3.83	5.75	-	-	2.33	9.58	10.55	0.53	2.43	2.49	3.94/A
12+24	3.50	7.00	-	-	2.21	10.50	10.50	0.62	3.25	3.19	3.23/A++	3.70	7.40	-	-	2.33	11.10	10.88	0.53	2.77	2.71	4.01/A
18+18	5.25	5.25	-	-	2.21	10.50	10.50	0.62	3.25	3.25	3.23/A++	5.55	5.55	-	-	2.33	11.10	11.10	0.53	2.77	2.77	4.01/A
9+9+9	2.65	2.65	2.65	-	2.84	7.94	9.98	0.78	2.50	3.41	3.17/A++	2.87	2.87	2.87	-	3.00	8.62	10.55	0.66	2.22	2.91	3.89/A
9+9+12	2.65	2.65	3.53	-	2.84	8.83	10.50	0.78	2.76	3.41	3.19/A++	2.84	2.84	3.79	-	3.00	9.48	11.10	0.66	2.41	2.91	3.93/A
9+9+18	2.63	2.63	5.25	-	2.84	10.50	11.55	0.78	3.25	3.58	3.23/A++	2.78	2.78	5.55	-	3.00	11.10	12.21	0.66	2.77	3.04	4.01/A
9+9+24	2.25	2.25	6.00	-	2.84	10.50	11.55	0.78	3.25	3.58	3.23/A++	2.38	2.38	6.34	-	3.00	11.10	12.21	0.66	2.77	3.04	4.01/A
9+12+12	2.65	3.53	3.53	-	2.84	9.71	11.55	0.78	3.02	3.58	3.21/A++	2.82	3.76	3.76	-	3.00	10.34	12.21	0.66	2.60	3.04	3.97/A
9+12+18	2.42	3.23	4.85	-	2.84	10.50	11.55	0.78	3.25	3.58	3.23/A++	2.56	3.42	5.12	-	3.00	11.10	12.21	0.66	2.77	3.04	4.01/A
9+12+24	2.10	2.80	5.60	-	2.84	10.50	11.55	0.78	3.25	3.58	3.23/A++	2.22	2.96	5.92	-	3.00	11.10	12.21	0.66	2.77	3.04	4.01/A
9+18+18	2.10	4.20	4.20	-	2.84	10.50	11.55	0.78	3.25	3.58	3.23/A++	2.22	4.44	4.44	-	3.00	11.10	12.21	0.66	2.77	3.04	4.01/A
12+12+12	3.50	3.50	3.50	-	2.84	10.50	11.55	0.78	3.25	3.58	3.23/A++	3.70	3.70	3.70	-	3.00	11.10	12.21	0.66	2.77	3.04	4.01/A
12+12+18	3.00	3.00	4.50	-	2.84	10.50	11.55	0.78	3.25	3.58	3.23/A++	3.17	3.17	4.76	-	3.00	11.10	12.21	0.66	2.77	3.04	4.01/A
9+9+9+9	2.63	2.63	2.63	2.63	3.68	10.50	13.65	0.88	3.25	3.97	3.23/A++	2.78	2.78	2.78	2.78	3.89	11.10	13.32	0.75	2.77	3.60	4.01/A
9+9+9+12	2.42	2.42	2.42	3.23	3.68	10.50	13.65	0.88	3.25	3.97	3.23/A++	2.56	2.56	2.56	3.42	3.89	11.10	13.32	0.75	2.77	3.60	4.01/A
9+9+9+18	2.10	2.10	2.10	4.20	3.68	10.50	13.65	0.88	3.25	3.97	3.23/A++	2.22	2.22	2.22	4.44	3.89	11.10	13.32	0.75	2.77	3.60	4.01/A
9+9+12+12	2.25	2.25	3.00	3.00	3.68	10.50	13.65	0.88	3.25	3.97	3.23/A++	2.38	2.38	3.17	3.17	3.89	11.10	13.32	0.75	2.77	3.60	4.01/A
9+12+12+12	2.10	2.80	2.80	2.80	3.68	10.50	13.65	0.88	3.25	3.97	3.23/A++	2.22	2.96	2.96	2.96	3.89	11.10	13.32	0.75	2.77	3.60	4.01/A

Based on wall mounted combination

COMPATIBLE  
WITH

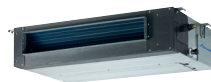
HIGH WALL HDH  
9/12/18/24



HIGH WALL HKD  
R32 9/12/18/24



DUCTED MEDIUM STATIC  
PRESSURE DDM 12/18



CASSETTE CDM  
9X/12/18



CONSOLE  
XDM 12X/18



## YDZC5-42 RESIDENTIAL MULTISPLIT CINCO

Indoor unit combinations	COOLING											HEATING												
	Rated power (kW)					Total cooling power (kW)			Total Input power (kW)			EER/ Energy label	Rated power (kW)					Total heating power (kW)			Total Input power (kW)			COP/ Energy label
	Unit A	Unit B	Unit C	Unit D	Unit E	Rated	Min.	Max.	Rated	Min.	Max.		Unit A	Unit B	Unit C	Unit D	Unit E	Rated	Min.	Max.	Rated	Min.	Max.	
9+9	2.64	2.64	-	-	-	2.34	5.28	8.00	0.72	1.69	2.85	3.12/A+	2.99	2.99	-	-	-	2.34	5.97	8.00	0.53	1.60	2.08	3.73/A
9+12	2.61	3.48	-	-	-	2.34	6.09	8.61	0.72	1.97	2.89	3.10/A+	2.87	3.83	-	-	-	2.34	6.70	8.61	0.53	1.78	2.11	3.76/A
9+18	2.57	5.14	-	-	-	2.34	7.71	11.07	0.72	2.53	3.19	3.04/A+	2.72	5.44	-	-	-	2.34	8.16	11.07	0.53	2.14	2.32	3.81/A
9+24	2.52	6.72	-	-	-	2.34	9.24	12.30	0.72	3.09	3.62	2.99/A+	2.60	6.94	-	-	-	2.34	9.54	12.30	0.53	2.47	2.63	3.86/A
12+12	3.45	3.45	-	-	-	2.34	6.90	9.23	0.72	2.25	3.02	3.07/A+	3.72	3.72	-	-	-	2.34	7.43	9.23	0.53	1.96	2.20	3.78/A
12+18	3.41	5.11	-	-	-	2.34	8.52	11.69	0.72	2.82	3.49	3.02/A+	3.56	5.34	-	-	-	2.34	8.89	11.69	0.53	2.32	2.54	3.84/A
12+24	3.35	6.70	-	-	-	2.34	10.05	12.30	0.72	3.39	3.83	2.97/A+	3.42	6.85	-	-	-	2.34	10.27	12.30	0.53	2.64	2.79	3.89/A
18+18	5.07	5.07	-	-	-	2.34	10.14	12.30	0.72	3.42	3.83	2.96/A+	5.18	5.18	-	-	-	2.34	10.35	12.30	0.53	2.66	2.79	3.90/A
9+9+9	2.54	2.54	2.54	-	-	2.89	7.62	10.46	0.89	2.50	4.26	3.05/A+	2.69	2.69	2.69	-	-	2.89	8.08	10.46	0.65	2.12	3.10	3.81/A
9+9+12	2.53	2.53	3.37	-	-	2.89	8.43	12.92	0.89	2.79	4.04	3.02/A+	2.64	2.64	3.52	-	-	2.89	8.81	12.92	0.65	2.30	2.94	3.84/A
9+9+18	2.51	2.51	5.03	-	-	2.89	10.05	12.30	0.89	3.39	4.26	2.97/A+	2.57	2.57	5.14	-	-	2.89	10.27	12.30	0.65	2.64	3.10	3.89/A
9+9+24	2.48	2.48	6.62	-	-	2.89	11.58	12.92	0.89	3.97	4.43	2.91/A+	2.50	2.50	6.66	-	-	2.89	11.65	12.92	0.65	2.95	3.22	3.95/A
9+12+12	2.52	3.36	3.36	-	-	2.89	9.24	11.07	0.89	3.09	4.04	2.99/A+	2.60	3.47	3.47	-	-	2.89	9.54	11.07	0.65	2.47	2.94	3.86/A
9+12+18	2.51	3.34	5.01	-	-	2.89	10.86	11.69	0.89	3.70	4.26	2.94/A+	2.54	3.39	5.08	-	-	2.89	11.00	11.69	0.65	2.81	3.10	3.92/A
9+12+24	2.46	3.28	6.56	-	-	2.89	12.30	12.92	0.89	4.26	4.43	2.89/A+	2.46	3.28	6.56	-	-	2.89	12.30	12.92	0.65	3.10	3.22	3.97/A
9+18+18	2.46	4.92	4.92	-	-	2.89	12.30	12.92	0.89	4.26	4.43	2.89/A+	2.46	4.92	4.92	-	-	2.89	12.30	12.92	0.65	3.10	3.22	3.97/A
12+12+12	3.35	3.35	3.35	-	-	2.89	10.05	11.07	0.89	3.39	4.17	2.97/A+	3.42	3.42	3.42	-	-	2.89	10.27	11.07	0.65	2.64	3.04	3.89/A
12+12+18	3.33	3.33	5.00	-	-	2.89	11.67	12.92	0.89	4.01	4.43	2.91/A+	3.35	3.35	5.03	-	-	2.89	11.73	12.92	0.65	2.97	3.22	3.95/A
12+12+24	3.08	3.08	6.15	-	-	2.89	12.30	12.92	0.89	4.26	4.43	2.89/A+	3.08	3.08	6.15	-	-	2.89	12.30	12.92	0.65	3.10	3.22	3.97/A
12+18+18	3.08	4.61	4.61	-	-	2.89	12.30	12.92	0.89	4.26	4.43	2.89/A+	3.08	4.61	4.61	-	-	2.89	12.30	12.92	0.65	3.10	3.22	3.97/A
9+9+9+9	2.49	2.49	2.49	2.49	-	3.69	9.96	12.92	1.02	3.36	4.68	2.97/A++	2.55	2.55	2.55	2.55	-	3.69	10.19	12.92	0.74	2.62	3.41	3.89/A
9+9+9+12	2.49	2.49	2.49	3.31	-	3.69	10.77	13.53	1.02	3.66	4.68	2.94/A++	2.52	2.52	2.52	3.36	-	3.69	10.92	13.53	0.74	2.79	3.41	3.92/A
9+9+9+18	2.46	2.46	2.46	4.92	-	3.69	12.30	13.53	1.02	4.26	4.89	2.89/A++	2.46	2.46	2.46	4.92	-	3.69	12.30	13.53	0.74	3.10	3.56	3.97/A
9+9+9+24	2.17	2.17	2.17	5.79	-	3.69	12.30	13.53	1.02	4.26	4.89	2.89/A++	2.17	2.17	2.17	5.79	-	3.69	12.30	13.53	0.74	3.10	3.56	3.97/A
9+9+12+12	2.48	2.48	3.31	3.31	-	3.69	11.58	13.53	1.02	3.97	4.68	2.91/A++	2.50	2.50	3.33	3.33	-	3.69	11.65	13.53	0.74	2.95	3.41	3.95/A
9+9+12+18	2.31	2.31	3.08	4.61	-	3.69	12.30	13.53	1.02	4.26	4.89	2.89/A++	2.31	2.31	3.08	4.61	-	3.69	12.30	13.53	0.74	3.10	3.56	3.97/A
9+9+12+24	2.05	2.05	2.73	5.47	-	3.69	12.30	13.53	1.02	4.26	4.89	2.89/A++	2.05	2.05	2.73	5.47	-	3.69	12.30	13.53	0.74	3.10	3.56	3.97/A
9+12+12+12	2.46	3.28	3.28	3.28	-	3.69	12.30	13.53	1.02	4.26	4.68	2.89/A++	2.46	3.28	3.28	3.28	-	3.69	12.30	13.53	0.74	3.10	3.41	3.97/A
9+12+12+18	2.17	2.89	2.89	4.34	-	3.69	12.30	13.53	1.02	4.26	4.89	2.89/A++	2.17	2.89	2.89	4.34	-	3.69	12.30	13.53	0.74	3.10	3.56	3.97/A
12+12+12+12	3.08	3.08	3.08	3.08	-	3.69	12.30	13.53	1.02	4.26	4.68	2.89/A++	3.08	3.08	3.08	3.08	-	3.69	12.30	13.53	0.74	3.10	3.41	3.97/A
12+12+12+18	2.73	2.73	2.73	4.10	-	3.69	12.30	13.53	1.02	4.26	4.89	2.89/A++	2.73	2.73	2.73	4.10	-	3.69	12.30	13.53	0.74	3.10	3.56	3.97/A
9+9+9+9+9	2.46	2.46	2.46	2.46	2.46	4.18	12.30	14.00	1.15	4.26	5.11	2.89/A++	2.46	2.46	2.46	2.46	2.46	4.18	12.30	14.00	0.84	3.10	3.72	3.97/A
9+9+9+9+12	2.31	2.31	2.31	2.31	3.08	4.18	12.30	14.00	1.15	4.26	5.11	2.89/A++	2.31	2.31	2.31	2.31	3.08	4.18	12.30	14.00	0.84	3.10	3.72	3.97/A
9+9+9+9+18	2.05	2.05	2.05	2.05	4.10	4.18	12.30	14.00	1.15	4.26	5.11	2.89/A++	2.05	2.05	2.05	2.05	4.10	4.18	12.30	14.00	0.84	3.10	3.72	3.97/A
9+9+9+12+12	2.17	2.17	2.17	2.89	2.89	4.18	12.30	14.00	1.15	4.26	5.11	2.89/A++	2.17	2.17	2.17	2.89	2.89	4.18	12.30	14.00	0.84	3.10	3.72	3.97/A
9+9+12+12+12	2.05	2.05	2.73	2.73	2.73	4.18	12.30	14.00	1.15	4.26	5.11	2.89/A++	2.05	2.05	2.73	2.73	2.73	4.18	12.30	14.00	0.84	3.10	3.72	3.97/A

Based on wall mounted combination



*Airwell*

*Just feel well*

Twin &  
Multisplit

Handwriting practice area consisting of 30 horizontal dotted lines.