

Heat pumps - Cooling
and heating mode

PAC BT SPLIT

LOW TEMPERATURE HEAT PUMP



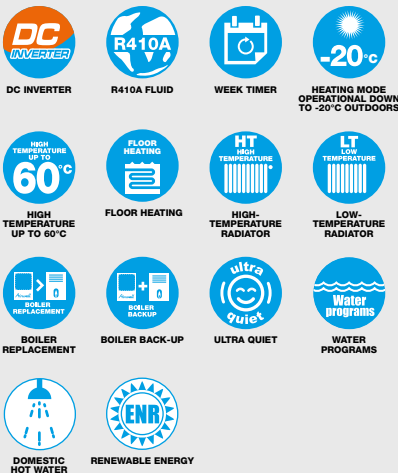
+ PRODUCTS

- Wide range of configurations.
- Energy efficiency: 181 % ηs.
- Three services heat pump: reversible and DHW.



RCW15
(optional)

FEATURES



PAC BTE SPLIT
with DHW tank included



PAC BT SPLIT
DHW optional



PAC BT SPLIT
ODU 4-8 kW



PAC BT SPLIT
ODU 10-16 kW



- Compatible with several transmitters: heated floors, radiators, fan-convectors...
- Recovery of free energy from the sun via a solar heat exchanger (DHW only - optional).
- Large integrated control panel on the product (status, diagnosis...).
- 280L integrated hot water storage tank: optimized comfort (depending on model).
- Hydraulic distribution allowing multi-zone management (option).
- Compact outdoor unit: low footprint.



SELECT YOUR SYSTEM

	Outdoor unit	Indoor unit without DHW	Indoor unit with DHW
PAC BT 4kW	7HP061025	7HP010007	7HP010005
PAC BT 6kW	7HP061026	7HP010007	7HP010005
PAC BT 8kW	7HP061027	7HP010007	7HP010005
PAC BT 10kW	7HP061028	7HP010008	7HP010006
PAC BT 12kW three phase	7HP061029	7HP010008	7HP010006
PAC BT 12kW single phase	7HP061030	7HP010008	7HP010006
PAC BT 14kW three phase	7HP061031	7HP010008	7HP010006
PAC BT 14kW single phase	7HP061032	7HP010008	7HP010006
PAC BT 16kW three phase	7HP061033	7HP010008	7HP010006
PAC BT 16kW single phase	7HP061034	7HP010008	7HP010006



PAC BT SPLIT TECHNICAL DATA

Outdoor units			PAC-BT-UE-4KW-H11	PAC-BT-UE-6KW-H11	PAC-BT-UE-8KW-H11	PAC-BT-UE-10KW-H11	PAC-BT-UE-12KW-H11	PAC-BT-UE-12KW-H13	PAC-BT-UE-14KW-H11	PAC-BT-UE-14KW-H13	PAC-BT-UE-16KW-H11	PAC-BT-UE-16KW-H13		
Part number			7HP061025	7HP061026	7HP061027	7HP061028	7HP061030	7HP061029	7HP061032	7HP061031	7HP061034	7HP061033		
Phases			Single phase	Single phase	Single phase	Single phase	Single phase	Three phase	Single phase	Three phase	Single phase	Three phase		
HEATING MODE														
Air +7°C Water 30/35°C	Heating capacity	kW	4.23	6.33	8.09	9.69	12.16		14.16		15.77			
	Power input	kW	0.81	1.31	1.77	2.11	2.54		2.91		3.28			
	COP		5.21	4.83	4.57	4.59	4.79		4.87		4.81			
Air +7°C Water 40/45°C	Heating capacity	kW	4.06	6.00	7.29	9.77	12.22		14.64		16.44			
	Power input	kW	1.10	1.65	2.15	2.70	3.35		3.86		4.42			
	COP	-	3.69	3.64	3.39	3.62	3.65		3.79		3.72			
Air -7°C Water 30/35°C	Heating capacity	kW	4.78	5.68	6.09	7.69	9.76		11.32		12.06			
	Power input	kW	1.56	1.95	2.18	2.80	3.32		3.90		4.14			
	COP		3.06	2.91	2.79	2.75	2.94		2.90		2.91			
COOLING MODE														
Air 35°C Water indoor 12°C / outdoor +7°C	Cooling capacity	kW	4.34	6.24	7.57	9.52	11.34		14.15		15.53			
	Power input	kW	1.27	2.05	2.73	3.20	4.25		5.14		5.71			
	EER		3.42	3.05	2.77	2.97	2.67		2.75		2.72			
Air 35°C Water indoor 23°C / outdoor 18°C	Cooling capacity	kW	4.47	6.19	8.01	10.16	11.39		14.34		15.40			
	Power input	kW	0.80	1.29	1.81	2.03	2.59		3.10		3.56			
	EER		5.58	4.80	4.43	5.00	4.40		4.63		4.33			
PERFORMANCE														
SCOP (Average climate) Water 47/55°C	Nominal capacity	kW	4	6	7	10	12		14		15			
	Energy class - Heat pump only		A++	A++	A++	A++	A++		A++		A++			
	ηs - Heat pump only	%	130	127	127	128	129		131		132			
	Energy class - System		A++	A++	A++	A++	A++		A++		A++			
	ηs - System	%	135	132	132	133	134		136		138			
SCOP (Average climate) Water 30/35°C	Energy class - DHW	XL	A	A	A	A	A		A		A			
	Nominal capacity	kW	4	6	7	10	12		14		15			
	Energy class - Heat pump only		A++	A+++	A++	A++	A+++		A++		A++			
	ηs - Heat pump only	%	174	175	171	174	176		166		164			
	Energy class - System		A+++	A+++	A+++	A+++	A+++		A+++		A+++			
Air flow	ηs - System	%	179	180	176	179	181		171		169			
		m³/h	3180	3180	5120	6500	6500		6500		6500			
Sound pressure at 1 metre		dB(A)	46	48	50	52	54		55		55			
Sound power		dB(A)	60	62	65	67	69		70		70			
Operating limits	°C	Cooling mode				Heating mode				DHW mode				
		-5/46				-20/35				-20/43				
POWER SUPPLY														
Power supply	V/Ph/Hz		230/1/50	230/1/50	230/1/50	230/1/50	230/1/50	400/3/50	230/1/50	400/3/50	230/1/50	400/3/50		
Maximum amperage	A		12.10	12.40	22.00	30.00	33.00	7.00	34.00	8.90	35.00	9.40		
INSTALLATION & OTHERS														
Minimum system water content ⁽¹⁾	l		15	22	28	35	42		50		55			
Minimum water flow rate	l/s		0.17	0.17	0.17	0.25	0.25		0.25		0.25			
Maximum water flow rate	l/s		0.90	0.90	0.90	1.10	1.30		1.50		1.70			
Refrigerant pipe min/max equivalent length	m		2 -20	2 -20	2 -30	2 -50	2 -50		2 -50		2 -50			
Maximum refrigerant pipe height difference with outdoor unit higher/lower than indoor unit	m		15/20	15/20	15/20	25/30	25/30		25/30		25/30			
Gas pipe diameter	inches		5/8"	5/8"	5/8"	5/8"	5/8"		5/8"		5/8"			
Liquid pipe diameter	inches		3/8"	3/8"	3/8"	3/8"	3/8"		3/8"		3/8"			
Refrigerant	Type /GWP		R410A/2088											
	Standard charge for connections up to 5 m	kg	2.5	2.5	2.8	3.9	3.9	4.2	3.9	4.2	3.9	4.2		
	Additional charge per metre	g/m	54	54	54	54	54	54	54	54	54	54		
Unit dimensions (WxHxD)	mm		960x860x380				1075x965x395				900x1327x400			
Weight	kg		60				76				109			

Indoor unit data			PAC-BTE-UI-4-8KW-H11	PAC-BTE-UI-10-16KW-H11	PAC-BT-UI-4-8KW-H11	PAC-BT-UI-10-16KW-H11
Range			Indoor unit with DHW included		Indoor unit without DHW	
Part number			7HP010005	7HP010006	7HP010007	7HP010008
Volume of DHW tank	l		280		-	-
Dimensions	Dimensions (WxHxD)	mm	600x2040x800		462x700x316	
	Operation weight	kg	450		50	
Mode characteristics	Power supply	V/Ph/Hz	230/1/50		230/1/50	
	Maximum current	A	9.60	9.6	10.1	10.7




1. Extra tank is not needed, if content of water in the system is higher.

ALL HEAT PUMPS ACCESSORIES

PART NUMBER	NAME	FUNCTION
(included)	Y-shape filter ⓘ	Protect the heat pump from sludging and preserve optimum thermal exchange.
7ACFH0663	Buffer tank 140 L	It protects the heat pump against short cycles that can reduce the useful life of the compressors and improves operation during defrosting phases.
 7ACFH0666	Settling filter (pot) ⓘ	Protect the heat pump from sludging and preserve optimum thermal exchange.
 7ACTL0510	Floor support rubber recycled (pair) ⓘ Length: 1 000 mm	Necessary for a professional installation.

ⓘ Mandatory accessory.

PAC BT SPLIT ACCESSORIES

PART NUMBER	NAME	FUNCTION
 7ACFH0825	Electrical complement kit 2/4/6 kW mono PAC BT (recommended)	Allows to ensure additional heating via electrical resistance.
 7ACEL1757	Boiler backup kit PAC BT	Allows to connect a boiler (fuel, gas, wood...).
7ACFH0830	Auxiliary condensate collection tray	Complementary condensate tray, to increase the maximum condensate recovery volume.
 7ACEL1732	RCW15 Thermostat PAC BT (power supply mandatory)	Temperature and humidity thermostat / Remote keyboard / weekly timer.
7ACEL1733	Power supply for RCW15	Power supply kit for RCW15.