

# BacNet Converter

BMV-03 - 7ACELH013



Read this manual before installation and operation  
Make sure that it is well kept for later reference

Introduction .....	1
Wiring .....	5
ADV02 Address setting.....	7
BACnet point table.. .....	9

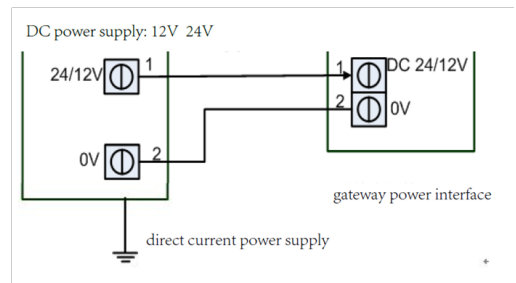
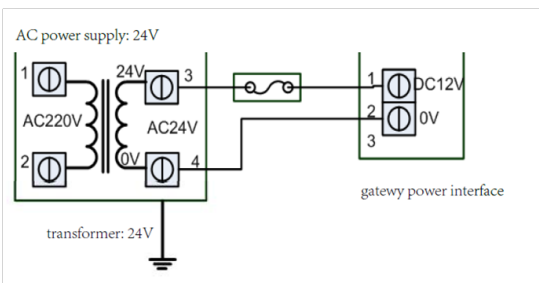


### Interface Description

#### Power Supply

Protocol converter support DC12/24V, AC24V power supply, main board power dissipation is lower than 2W.

DC/AC power supply+  
 GND power supply-



#### RP button

System recover button, if holding "RP" button during 5 seconds, it will recover to original setting.

#### RESET button

### Network Card

Ethernet: 10M/100M Ethernet interface, support BACnet IP interface access.  
Default setting IP address is 192.168.1.117 (it is recommended to change PC IP address, to make sure the same network segment with IP of this gateway)

While IP can not be identified, hold press "RP" button during 5 seconds to recover original setting

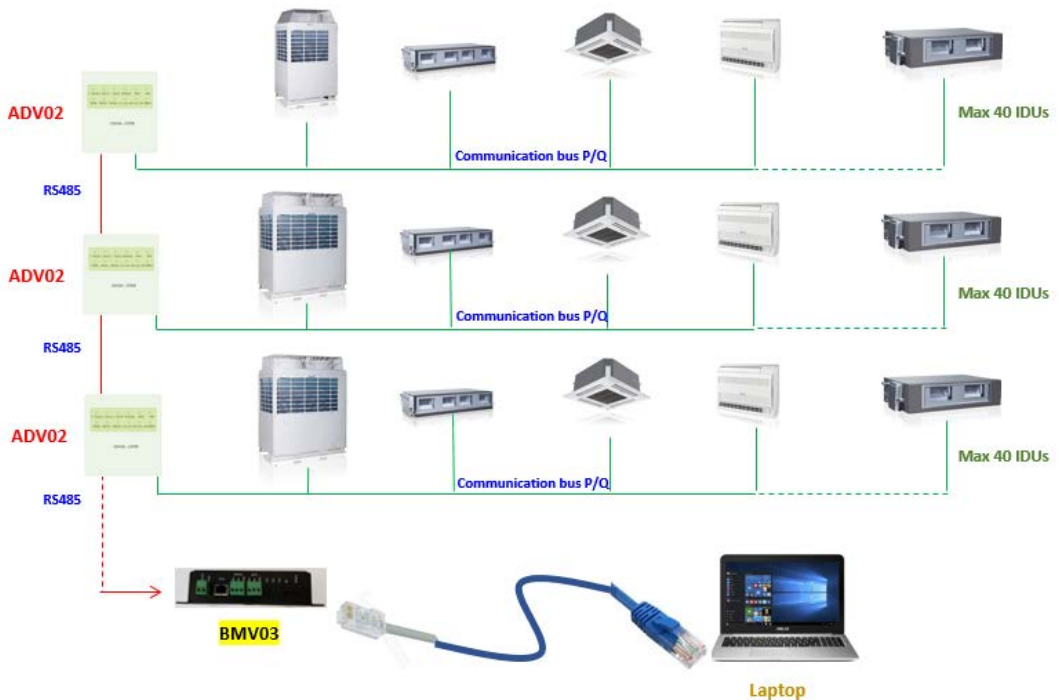
### RS485 Interface

2\*RS485 interface, one is supporting Modbus Slaver & one is supporting MSTP (not use)  
RS485 is using a standard communication chip EIA-485, differential signal transmission, which enhance anti-interference capacity.

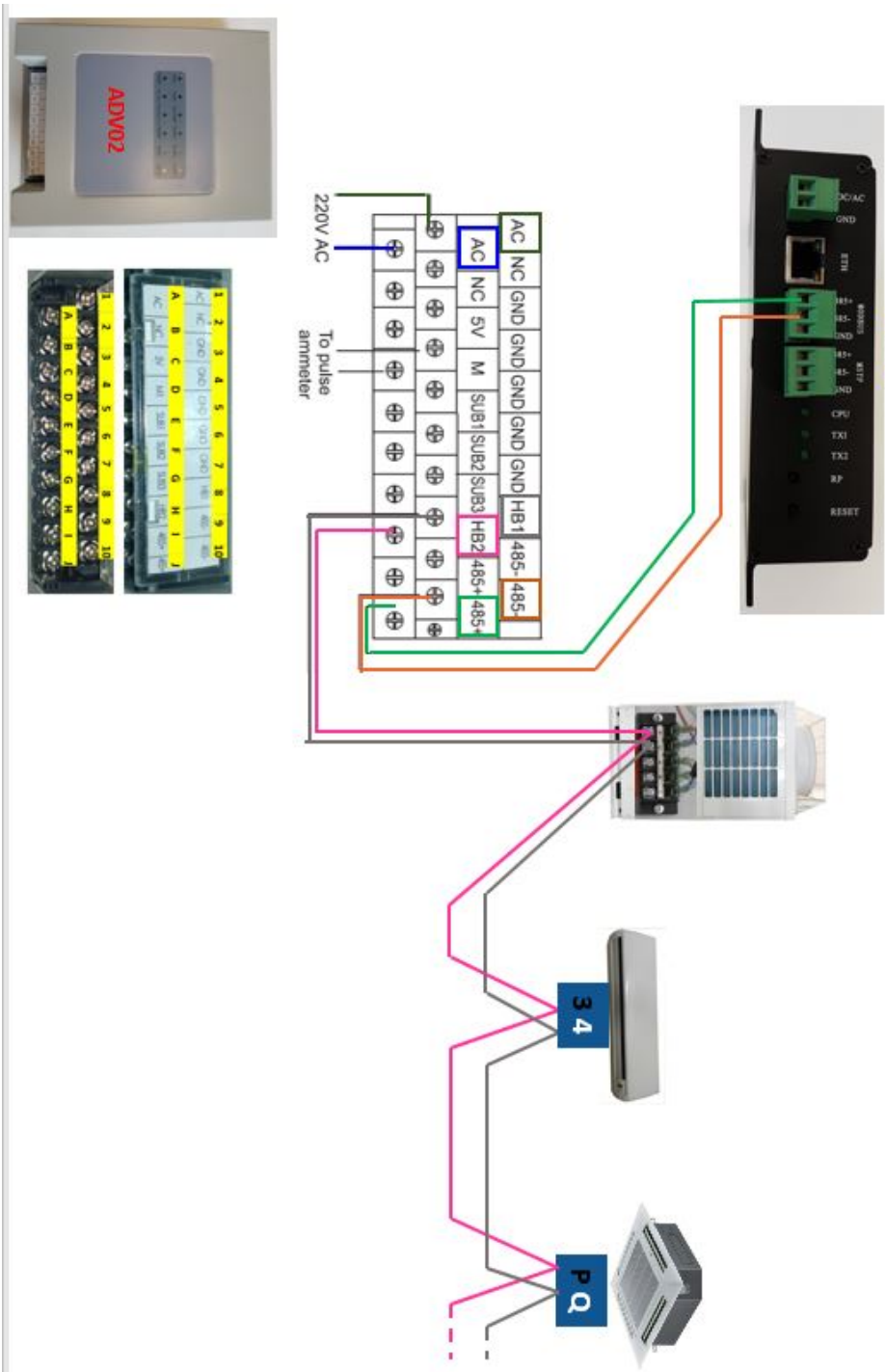
Bus communication, or named of hand in hand, is essential for RS485.

Communication cable section 0.75—1.0mm<sup>2</sup>, type RVSP Shielded twisted pair, shielded wire must be connected, and single point link to the earth.

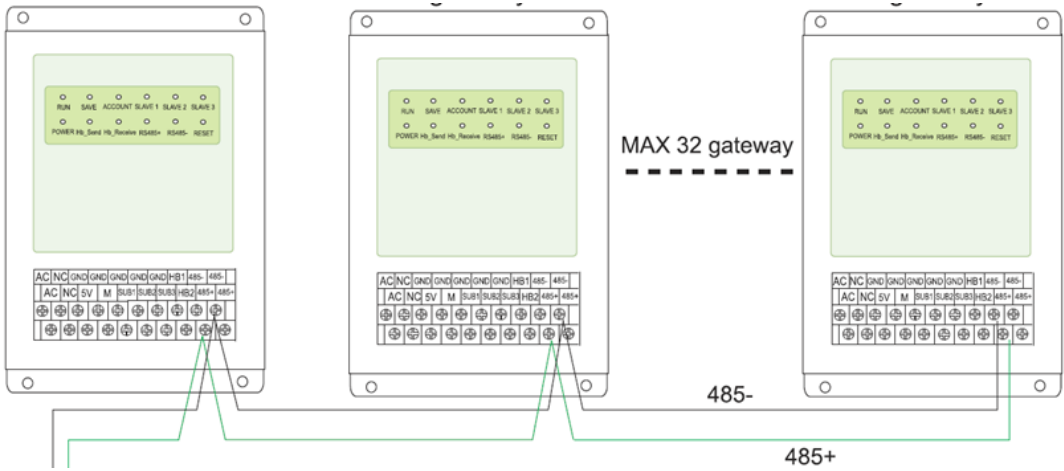
### !Wiring concept



### Wiring : 1 system + ADV02 + BMV03 + Laptop



## ADV02 wiring

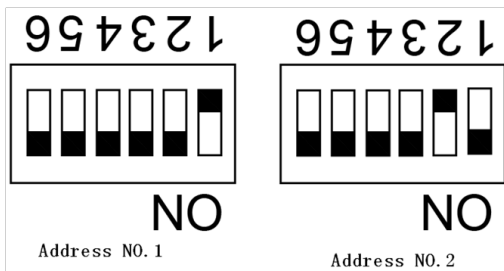


## ADV02 Addressing method

Pay attention all the daps from factory are ON as shown on the photo



Example of addressing of 2 ADV02 (2 systems)



## DEVICE and Indoor/Outdoor Setting Relations

This device can set one indoor or one outdoor as one device, easy for PC configuration.

Device 1: No.1 Outdoor( system 1),

Device 34: No.2 Outdoor(System 2)

Device 2-33: No.1~No.32 indoor of No.1 Outdoor

Device 35-64: No.1~No.32 indoor of No.2 Outdoor

Device and indoor/outdoor relations				
Model	device	Indoor/Outdoor	device	Indoor/Outdoor
Outdoor	1	No.1 Outdoor	34	No.2 Outdoor
Indoor	2	No.1 Indoor	35	No.1 Indoor
	3	No.2 Indoor	36	No.2 Indoor
	4	No.3 Indoor	37	No.3 Indoor
	5	No.4 Indoor	38	No.4 Indoor
	6	No.5 Indoor	39	No.5 Indoor
	7	No.6 Indoor	40	No.6 Indoor
	8	No.7 Indoor	41	No.7 Indoor
	9	No.8 Indoor	42	No.8 Indoor
	10	No.9 Indoor	43	No.9 Indoor
	11	No.10 Indoor	44	No.10 Indoor
	12	No.11 Indoor	45	No.11 Indoor
	13	No.12 Indoor	46	No.12 Indoor
	14	No.13 Indoor	47	No.13 Indoor
	15	No.14 Indoor	48	No.14 Indoor
	16	No.15 Indoor	49	No.15 Indoor
	17	No.16 Indoor	50	No.16 Indoor
	18	No.17 Indoor	51	No.17 Indoor
	19	No.18 Indoor	52	No.18 Indoor
	20	No.19 Indoor	53	No.19 Indoor
	21	No.20 Indoor	54	No.20 Indoor
	22	No.21 Indoor	55	No.21 Indoor
	23	No.22 Indoor	56	No.22 Indoor
	24	No.23 Indoor	57	No.23 Indoor
	25	No.24 Indoor	58	No.24 Indoor
	26	No.25 Indoor	59	No.25 Indoor
	27	No.26 Indoor	60	No.26 Indoor
	28	No.27 Indoor	61	No.27 Indoor
	29	No.28 Indoor	62	No.28 Indoor
	30	No.29 Indoor	63	No.29 Indoor
	31	No.30 Indoor	64	No.30 Indoor
	32	No.31 Indoor	—	—
	33	No.32 Indoor	—	—

## Unit Specification

### Indoor Specification (total 14 items)

(1) operating mode	read/write
(2) temperature setting	write
(3) fan speed	read/write
(4) temperature spell wrong	read(subtract 64 will actual temperature)
(5) on/off	read/write
(6) error code	read
(7) control mode	read/write
(8) maximum power consumption	read(today read yesterday data)
(9) minimum power consumption	read(today read yesterday data)
(10) average consumption	read(today read yesterday data)

### Outdoor Specification (Total 32 items)

(1) outdoor on/off status	read
(2) outdoor error code	read
(3) outdoor temperature	read(subtracting 64 is actual temperature)
(4) gateway time-year	read/write
(5) gateway time -month	read/write
(6) gateway time -date	read/write
(7) gateway time -hour	read/write
(8) gateway time -minute	read/write
(9) gateway time -second	read/write
(10) electric pulse per kilowatt -hour	read/write
(11) maximum starting time -hour	read/write
(12) maximum starting time -minute	read/write
(13) minimum starting time -hour	read/write
(14) minimum starting time -minute	read/write
(15) average starting time -hour	read/write
(16) average starting time -minute	read/write
(17) current transformer ratio	read/write
(18) gateway communication check	read



# BACnet point table

## Bacnet object description

Outdoor:

(1) Outdoor Stop/Start Status (BI)

Property Identifier	Property Datatype	RW	Description
Object_Identifier	BACnetObjectIdentifier	R	
Object_Name	CharacterString	R	outdoor_onoff state
Object_Type	BACnetObjectType	R	BINARY_INPUT
Present_Value	BACnetBinaryPV	W	
Description	CharacterString	O	(outdoor_onoff state)
Device_Type	CharacterString	O	
Status_Flags	BACnetStatusFlags	R	
Event_State	BACnetEventState	R	
Reliability	BACnetReliability	O	
Out_Of_Service	BOOLEAN	R	Always FALSE
Polarity	BACnetPolarity	R	NORMAL fixed
Inactive_Text	CharacterString	O	OFF
Active_Text	CharacterString	O	ON
Change_Of_State_Time	BACnetDateTime	O	
Change_Of_State_Count	Unsigned	O	
Time_Of_State_Count_Reset	BACnetDateTime	O	
Elapsed_Active_Time	Unsigned32	O	
Time_Of_Active_Time_Reset	BACnetDateTime	O	
Time_Delay	Unsigned	O	
Notification_Class	Unsigned	O	
Alarm_Value	BACnetBinaryPV	O	
Event_Enable	BACnetEventTransitionBits	O	
Acked_Transitions	BACnetEventTransitionBits	O	
Notify_Type	BACnetNotifyType	O	
Event_Time_Stamps	BACnetARRAY[3] of BACnetTimeStamp	O	
Profile_Name	CharacterString	O	

# BACnet point table

## (2) Ambient Temperature (AI)

Property Identifier	Property Datatype	RW	Description
Object_Identifier	BACnetObjectIdentifier	R	
Object_Name	CharacterString	R	outdoor_temp
Object_Type	BACnetObjectType	R	ANALOG_INPUT
Present_Value	REAL	R	
Description	CharacterString	O	(outdoor_temp)
Device_Type	CharacterString	O	
Status_Flags	BACnetStatusFlags	R	
Event_State	BACnetEventState	R	
Reliability	BACnetReliability	O	
Out_Of_Service	BOOLEAN	R	Always FALSE
Update_Interval	Unsigned	O	
Units	BACnetEngineeringUnits	R	
Min_Pres_Value	REAL	O	
Max_Pres_Value	REAL	O	
Resolution	REAL	O	
COV_Increment	REAL	O	1.0 fixed
Time_Delay	Unsigned	O	
Notification_Class	Unsigned	O	
High_Limit	REAL	O	
Low_Limit	REAL	O	
Deadband	REAL	O	
Limit_Enable	BACnetLimitEnable	O	
Event_Enable	BACnetEventTransitionBits	O	
Acked_Transitions	BACnetEventTransitionBits	O	
Notify_Type	BACnetNotifyType	O	
Event_Time_Stamps	BACnetARRAY[3] of BACnetTimeStamp	O	
Profile_Name	CharacterString	O	

# BACnet point table

## (3) Outdoor Error Code (AI)

Property Identifier	Property Datatype	RW	Description
Object_Identifier	BACnetObjectIdentifier	R	
Object_Name	CharacterString	R	outdoor_errorcode
Object_Type	BACnetObjectType	R	ANALOG_VALUE
Present_Value	REAL	R	
Description	CharacterString	O	(outdoor_errorcode)
Device_Type	CharacterString	O	
Status_Flags	BACnetStatusFlags	R	
Event_State	BACnetEventState	R	
Reliability	BACnetReliability	O	
Out_Of_Service	BOOLEAN	R	Always FALSE
Update_Interval	Unsigned	O	
Units	BACnetEngineeringUnits	R	
Min_Pres_Value	REAL	O	
Max_Pres_Value	REAL	O	
Resolution	REAL	O	
COV_Increment	REAL	O	
Time_Delay	Unsigned	O	
Notification_Class	Unsigned	O	
High_Limit	REAL	O	
Low_Limit	REAL	O	
Deadband	REAL	O	
Limit_Enable	BACnetLimitEnable	O	
Event_Enable	BACnetEventTransitionBits	O	
Acked_Transitions	BACnetEventTransitionBits	O	
Notify_Type	BACnetNotifyType	O	
Event_Time_Stamps	BACnetARRAY[3] of BACnetTimeStamp	O	
Profile_Name	CharacterString	O	

# BACnet point table

## (4) Gateway Time-year (AI)

Property Identifier	Property Datatype	RW	Description
Object_Identifier	BACnetObjectIdentifier	R	
Object_Name	CharacterString	R	gateway_year
Object_Type	BACnetObjectType	R	ANALOG_INPUT
Present_Value	REAL	R	
Description	CharacterString	O	(gateway_year)
Device_Type	CharacterString	O	
Status_Flags	BACnetStatusFlags	R	
Event_State	BACnetEventState	R	
Reliability	BACnetReliability	O	
Out_Of_Service	BOOLEAN	R	Always FALSE
Update_Interval	Unsigned	O	
Units	BACnetEngineeringUnits	R	
Min_Pres_Value	REAL	O	
Max_Pres_Value	REAL	O	
Resolution	REAL	O	
COV_Increment	REAL	O	1.0 fixed
Time_Delay	Unsigned	O	
Notification_Class	Unsigned	O	
High_Limit	REAL	O	
Low_Limit	REAL	O	
Deadband	REAL	O	
Limit_Enable	BACnetLimitEnable	O	
Event_Enable	BACnetEventTransitionBits	O	
Acked_Transitions	BACnetEventTransitionBits	O	
Notify_Type	BACnetNotifyType	O	
Event_Time_Stamps	BACnetARRAY[3] of BACnetTimeStamp	O	
Profile_Name	CharacterString	O	

# BACnet point table

## (5) Gateway Time-year (AO)

Property Identifier	Property Datatype	RW	Description
Object_Identifier	BACnetObjectIdentifier	R	
Object_Name	CharacterString	R	gateway_year set
Object_Type	BACnetObjectType	R	ANALOG_OUTPUT
Present_Value	REAL	W	
Description	CharacterString	O	(gateway_year set)
Device_Type	CharacterString	O	
Status_Flags	BACnetStatusFlags	R	
Event_State	BACnetEventState	R	
Reliability	BACnetReliability	O	
Out_Of_Service	BOOLEAN	R	Always FALSE
Update_Interval	Unsigned	O	
Units	BACnetEngineeringUnits	R	
Priority_Array	BACnetPriorityArray	O	
Relinquish_Default	REAL	O	
COV_Increment	REAL	O	1.0 fixed
Time_Delay	Unsigned	O	
Notification_Class	Unsigned	O	
High_Limit	REAL	O	
Low_Limit	REAL	O	
Deadband	REAL	O	
Limit_Enable	BACnetLimitEnable	O	
Event_Enable	BACnetEventTransitionBits	O	
Acked_Transitions	BACnetEventTransitionBits	O	
Notify_Type	BACnetNotifyType	O	
Event_Time_Stamps	BACnetARRAY[3] of BACnetTimeStamp	O	
Profile_Name	CharacterString	O	

# BACnet point table

## (6) Gateway Time-month (AI)

Property Identifier	Property Datatype	RW	Description
Object_Identifier	BACnetObjectIdentifier	R	
Object_Name	CharacterString	R	gateway_month
Object_Type	BACnetObjectType	R	ANALOG_INPUT
Present_Value	REAL	R	
Description	CharacterString	O	(gateway_month)
Device_Type	CharacterString	O	
Status_Flags	BACnetStatusFlags	R	
Event_State	BACnetEventState	R	
Reliability	BACnetReliability	O	
Out_Of_Service	BOOLEAN	R	Always FALSE
Update_Interval	Unsigned	O	
Units	BACnetEngineeringUnits	R	
Min_Pres_Value	REAL	O	
Max_Pres_Value	REAL	O	
Resolution	REAL	O	
COV_Increment	REAL	O	1.0 fixed
Time_Delay	Unsigned	O	
Notification_Class	Unsigned	O	
High_Limit	REAL	O	
Low_Limit	REAL	O	
Deadband	REAL	O	
Limit_Enable	BACnetLimitEnable	O	
Event_Enable	BACnetEventTransitionBits	O	
Acked_Transitions	BACnetEventTransitionBits	O	
Notify_Type	BACnetNotifyType	O	
Event_Time_Stamps	BACnetARRAY[3] of BACnetTimeStamp	O	
Profile_Name	CharacterString	O	

# BACnet point table

## (7) Gateway Time-month (AO)

Property Identifier	Property Datatype	RW	Description
Object_Identifier	BACnetObjectIdentifier	R	
Object_Name	CharacterString	R	gateway_month set
Object_Type	BACnetObjectType	R	ANALOG_OUTPUT
Present_Value	REAL	W	
Description	CharacterString	O	(gateway_month set)
Device_Type	CharacterString	O	
Status_Flags	BACnetStatusFlags	R	
Event_State	BACnetEventState	R	
Reliability	BACnetReliability	O	
Out_Of_Service	BOOLEAN	R	Always FALSE
Update_Interval	Unsigned	O	
Units	BACnetEngineeringUnits	R	
Priority_Array	BACnetPriorityArray	O	
Relinquish_Default	REAL	O	
COV_Increment	REAL	O	1.0 fixed
Time_Delay	Unsigned	O	
Notification_Class	Unsigned	O	
High_Limit	REAL	O	
Low_Limit	REAL	O	
Deadband	REAL	O	
Limit_Enable	BACnetLimitEnable	O	
Event_Enable	BACnetEventTransitionBits	O	
Acked_Transitions	BACnetEventTransitionBits	O	
Notify_Type	BACnetNotifyType	O	
Event_Time_Stamps	BACnetARRAY[3] of BACnetTimeStamp	O	
Profile_Name	CharacterString	O	

# BACnet point table

## (8) Gateway Time-date (AI)

Property Identifier	Property Datatype	RW	Description
Object_Identifier	BACnetObjectIdentifier	R	
Object_Name	CharacterString	R	gateway_day
Object_Type	BACnetObjectType	R	ANALOG_INPUT
Present_Value	REAL	R	
Description	CharacterString	O	(gateway_day)
Device_Type	CharacterString	O	
Status_Flags	BACnetStatusFlags	R	
Event_State	BACnetEventState	R	
Reliability	BACnetReliability	O	
Out_Of_Service	BOOLEAN	R	Always FALSE
Update_Interval	Unsigned	O	
Units	BACnetEngineeringUnits	R	
Min_Pres_Value	REAL	O	
Max_Pres_Value	REAL	O	
Resolution	REAL	O	
COV_Increment	REAL	O	1.0 fixed
Time_Delay	Unsigned	O	
Notification_Class	Unsigned	O	
High_Limit	REAL	O	
Low_Limit	REAL	O	
Deadband	REAL	O	
Limit_Enable	BACnetLimitEnable	O	
Event_Enable	BACnetEventTransitionBits	O	
Acked_Transitions	BACnetEventTransitionBits	O	
Notify_Type	BACnetNotifyType	O	
Event_Time_Stamps	BACnetARRAY[3] of BACnetTimeStamp	O	
Profile_Name	CharacterString	O	



# BACnet point table

## (9) Gateway Time-date (AO)

Property Identifier	Property Datatype	RW	Description
Object_Identifier	BACnetObjectIdentifier	R	
Object_Name	CharacterString	R	gateway_day set
Object_Type	BACnetObjectType	R	ANALOG_OUTPUT
Present_Value	REAL	W	
Description	CharacterString	O	(gateway_day set)
Device_Type	CharacterString	O	
Status_Flags	BACnetStatusFlags	R	
Event_State	BACnetEventState	R	
Reliability	BACnetReliability	O	
Out_Of_Service	BOOLEAN	R	Always FALSE
Update_Interval	Unsigned	O	
Units	BACnetEngineeringUnits	R	
Priority_Array	BACnetPriorityArray	O	
Relinquish_Default	REAL	O	
COV_Increment	REAL	O	1.0 fixed
Time_Delay	Unsigned	O	
Notification_Class	Unsigned	O	
High_Limit	REAL	O	
Low_Limit	REAL	O	
Deadband	REAL	O	
Limit_Enable	BACnetLimitEnable	O	
Event_Enable	BACnetEventTransitionBits	O	
Acked_Transitions	BACnetEventTransitionBits	O	
Notify_Type	BACnetNotifyType	O	
Event_Time_Stamps	BACnetARRAY[3] of BACnetTimeStamp	O	
Profile_Name	CharacterString	O	

# BACnet point table

## (10) Gateway Time-hour (AI)

Property Identifier	Property Datatype	RW	Description
Object_Identifier	BACnetObjectIdentifier	R	
Object_Name	CharacterString	R	gateway_hour
Object_Type	BACnetObjectType	R	ANALOG_INPUT
Present_Value	REAL	R	
Description	CharacterString	O	(gateway_hour)
Device_Type	CharacterString	O	
Status_Flags	BACnetStatusFlags	R	
Event_State	BACnetEventState	R	
Reliability	BACnetReliability	O	
Out_Of_Service	BOOLEAN	R	Always FALSE
Update_Interval	Unsigned	O	
Units	BACnetEngineeringUnits	R	
Min_Pres_Value	REAL	O	
Max_Pres_Value	REAL	O	
Resolution	REAL	O	
COV_Increment	REAL	O	1.0 fixed
Time_Delay	Unsigned	O	
Notification_Class	Unsigned	O	
High_Limit	REAL	O	
Low_Limit	REAL	O	
Deadband	REAL	O	
Limit_Enable	BACnetLimitEnable	O	
Event_Enable	BACnetEventTransitionBits	O	
Acked_Transitions	BACnetEventTransitionBits	O	
Notify_Type	BACnetNotifyType	O	
Event_Time_Stamps	BACnetARRAY[3] of BACnetTimeStamp	O	
Profile_Name	CharacterString	O	

# BACnet point table

## (11) Gateway Time-hour (AO)

Property Identifier	Property Datatype	RW	Description
Object_Identifier	BACnetObjectIdentifier	R	
Object_Name	CharacterString	R	gateway_hour set
Object_Type	BACnetObjectType	R	ANALOG_OUTPUT
Present_Value	REAL	W	
Description	CharacterString	O	(gateway_hour set)
Device_Type	CharacterString	O	
Status_Flags	BACnetStatusFlags	R	
Event_State	BACnetEventState	R	
Reliability	BACnetReliability	O	
Out_Of_Service	BOOLEAN	R	Always FALSE
Update_Interval	Unsigned	O	
Units	BACnetEngineeringUnits	R	
Priority_Array	BACnetPriorityArray	O	
Relinquish_Default	REAL	O	
COV_Increment	REAL	O	1.0 fixed
Time_Delay	Unsigned	O	
Notification_Class	Unsigned	O	
High_Limit	REAL	O	
Low_Limit	REAL	O	
Deadband	REAL	O	
Limit_Enable	BACnetLimitEnable	O	
Event_Enable	BACnetEventTransitionBits	O	
Acked_Transitions	BACnetEventTransitionBits	O	
Notify_Type	BACnetNotifyType	O	
Event_Time_Stamps	BACnetARRAY[3] of BACnetTimeStamp	O	
Profile_Name	CharacterString	O	

# BACnet point table

## (12) Gateway Time-minute (AI)

Property Identifier	Property Datatype	RW	Description
Object_Identifier	BACnetObjectIdentifier	R	
Object_Name	CharacterString	R	gateway_minute
Object_Type	BACnetObjectType	R	ANALOG_INPUT
Present_Value	REAL	R	
Description	CharacterString	O	(gateway_minute)
Device_Type	CharacterString	O	
Status_Flags	BACnetStatusFlags	R	
Event_State	BACnetEventState	R	
Reliability	BACnetReliability	O	
Out_Of_Service	BOOLEAN	R	Always FALSE
Update_Interval	Unsigned	O	
Units	BACnetEngineeringUnits	R	
Min_Pres_Value	REAL	O	
Max_Pres_Value	REAL	O	
Resolution	REAL	O	
COV_Increment	REAL	O	1.0 fixed
Time_Delay	Unsigned	O	
Notification_Class	Unsigned	O	
High_Limit	REAL	O	
Low_Limit	REAL	O	
Deadband	REAL	O	
Limit_Enable	BACnetLimitEnable	O	
Event_Enable	BACnetEventTransitionBits	O	
Acked_Transitions	BACnetEventTransitionBits	O	
Notify_Type	BACnetNotifyType	O	
Event_Time_Stamps	BACnetARRAY[3] of BACnetTimeStamp	O	
Profile_Name	CharacterString	O	

# BACnet point table

## (13) Gateway Time-minute (AO)

Property Identifier	Property Datatype	RW	Description
Object_Identifier	BACnetObjectIdentifier	R	
Object_Name	CharacterString	R	gateway_minute set
Object_Type	BACnetObjectType	R	ANALOG_OUTPUT
Present_Value	REAL	W	
Description	CharacterString	O	(gateway_minute set)
Device_Type	CharacterString	O	
Status_Flags	BACnetStatusFlags	R	
Event_State	BACnetEventState	R	
Reliability	BACnetReliability	O	
Out_Of_Service	BOOLEAN	R	Always FALSE
Update_Interval	Unsigned	O	
Units	BACnetEngineeringUnits	R	
Priority_Array	BACnetPriorityArray	O	
Relinquish_Default	REAL	O	
COV_Increment	REAL	O	1.0 fixed
Time_Delay	Unsigned	O	
Notification_Class	Unsigned	O	
High_Limit	REAL	O	
Low_Limit	REAL	O	
Deadband	REAL	O	
Limit_Enable	BACnetLimitEnable	O	
Event_Enable	BACnetEventTransitionBits	O	
Acked_Transitions	BACnetEventTransitionBits	O	
Notify_Type	BACnetNotifyType	O	
Event_Time_Stamps	BACnetARRAY[3] of BACnetTimeStamp	O	
Profile_Name	CharacterString	O	

## BACnet point table

### (14) Gateway Time-second (AI)

Property Identifier	Property Datatype	RW	Description
Object_Identifier	BACnetObjectIdentifier	R	
Object_Name	CharacterString	R	gateway_sceond
Object_Type	BACnetObjectType	R	ANALOG_INPUT
Present_Value	REAL	R	
Description	CharacterString	O	(gateway_sceond)
Device_Type	CharacterString	O	
Status_Flags	BACnetStatusFlags	R	
Event_State	BACnetEventState	R	
Reliability	BACnetReliability	O	
Out_Of_Service	BOOLEAN	R	Always FALSE
Update_Interval	Unsigned	O	
Units	BACnetEngineeringUnits	R	
Min_Pres_Value	REAL	O	
Max_Pres_Value	REAL	O	
Resolution	REAL	O	
COV_Increment	REAL	O	1.0 fixed
Time_Delay	Unsigned	O	
Notification_Class	Unsigned	O	
High_Limit	REAL	O	
Low_Limit	REAL	O	
Deadband	REAL	O	
Limit_Enable	BACnetLimitEnable	O	
Event_Enable	BACnetEventTransitionBits	O	
Acked_Transitions	BACnetEventTransitionBits	O	
Notify_Type	BACnetNotifyType	O	
Event_Time_Stamps	BACnetARRAY[3] of BACnetTimeStamp	O	
Profile_Name	CharacterString	O	

# BACnet point table

## (15) Gateway Time-second (AO)

Property Identifier	Property Datatype	RW	Description
Object_Identifier	BACnetObjectIdentifier	R	
Object_Name	CharacterString	R	gateway_second set
Object_Type	BACnetObjectType	R	ANALOG_OUTPUT
Present_Value	REAL	W	
Description	CharacterString	O	(gateway_second set)
Device_Type	CharacterString	O	
Status_Flags	BACnetStatusFlags	R	
Event_State	BACnetEventState	R	
Reliability	BACnetReliability	O	
Out_Of_Service	BOOLEAN	R	Always FALSE
Update_Interval	Unsigned	O	
Units	BACnetEngineeringUnits	R	
Priority_Array	BACnetPriorityArray	O	
Relinquish_Default	REAL	O	
COV_Increment	REAL	O	1.0 fixed
Time_Delay	Unsigned	O	
Notification_Class	Unsigned	O	
High_Limit	REAL	O	
Low_Limit	REAL	O	
Deadband	REAL	O	
Limit_Enable	BACnetLimitEnable	O	
Event_Enable	BACnetEventTransitionBits	O	
Acked_Transitions	BACnetEventTransitionBits	O	
Notify_Type	BACnetNotifyType	O	
Event_Time_Stamps	BACnetARRAY[3] of BACnetTimeStamp	O	
Profile_Name	CharacterString	O	

# BACnet point table

## (16) Electric Pulse per Kilowatt (AI)

Property Identifier	Property Datatype	RW	Description
Object_Identifier	BACnetObjectIdentifier	R	
Object_Name	CharacterString	R	gateway_pluse
Object_Type	BACnetObjectType	R	ANALOG_INPUT
Present_Value	REAL	R	
Description	CharacterString	O	(gateway_pluse)
Device_Type	CharacterString	O	
Status_Flags	BACnetStatusFlags	R	
Event_State	BACnetEventState	R	
Reliability	BACnetReliability	O	
Out_Of_Service	BOOLEAN	R	Always FALSE
Update_Interval	Unsigned	O	
Units	BACnetEngineeringUnits	R	
Min_Pres_Value	REAL	O	
Max_Pres_Value	REAL	O	
Resolution	REAL	O	
COV_Increment	REAL	O	1.0 fixed
Time_Delay	Unsigned	O	
Notification_Class	Unsigned	O	
High_Limit	REAL	O	
Low_Limit	REAL	O	
Deadband	REAL	O	
Limit_Enable	BACnetLimitEnable	O	
Event_Enable	BACnetEventTransitionBits	O	
Acked_Transitions	BACnetEventTransitionBits	O	
Notify_Type	BACnetNotifyType	O	
Event_Time_Stamps	BACnetARRAY[3] of BACnetTimeStamp	O	
Profile_Name	CharacterString	O	



# BACnet point table

## (17) Electric Pulse per Kilowatt (AO)

Property Identifier	Property Datatype	RW	Description
Object_Identifier	BACnetObjectIdentifier	R	
Object_Name	CharacterString	R	gateway_pulse set
Object_Type	BACnetObjectType	R	ANALOG_OUTPUT
Present_Value	REAL	W	
Description	CharacterString	O	(gateway_pulse set)
Device_Type	CharacterString	O	
Status_Flags	BACnetStatusFlags	R	
Event_State	BACnetEventState	R	
Reliability	BACnetReliability	O	
Out_Of_Service	BOOLEAN	R	Always FALSE
Update_Interval	Unsigned	O	
Units	BACnetEngineeringUnits	R	
Priority_Array	BACnetPriorityArray	O	
Relinquish_Default	REAL	O	
COV_Increment	REAL	O	1.0 fixed
Time_Delay	Unsigned	O	
Notification_Class	Unsigned	O	
High_Limit	REAL	O	
Low_Limit	REAL	O	
Deadband	REAL	O	
Limit_Enable	BACnetLimitEnable	O	
Event_Enable	BACnetEventTransitionBits	O	
Acked_Transitions	BACnetEventTransitionBits	O	
Notify_Type	BACnetNotifyType	O	
Event_Time_Stamps	BACnetARRAY[3] of BACnetTimeStamp	O	
Profile_Name	CharacterString	O	

# BACnet point table

## (18) Maximum Starting Time - hour (AI)

Property Identifier	Property Datatype	RW	Description
Object_Identifier	BACnetObjectIdentifier	R	
Object_Name	CharacterString	R	gateway_time hour peak
Object_Type	BACnetObjectType	R	ANALOG_INPUT
Present_Value	REAL	R	
Description	CharacterString	O	(gateway_time hour peak)
Device_Type	CharacterString	O	
Status_Flags	BACnetStatusFlags	R	
Event_State	BACnetEventState	R	
Reliability	BACnetReliability	O	
Out_Of_Service	BOOLEAN	R	Always FALSE
Update_Interval	Unsigned	O	
Units	BACnetEngineeringUnits	R	
Min_Pres_Value	REAL	O	
Max_Pres_Value	REAL	O	
Resolution	REAL	O	
COV_Increment	REAL	O	1.0 fixed
Time_Delay	Unsigned	O	
Notification_Class	Unsigned	O	
High_Limit	REAL	O	
Low_Limit	REAL	O	
Deadband	REAL	O	
Limit_Enable	BACnetLimitEnable	O	
Event_Enable	BACnetEventTransitionBits	O	
Acked_Transitions	BACnetEventTransitionBits	O	
Notify_Type	BACnetNotifyType	O	
Event_Time_Stamps	BACnetARRAY[3] of BACnetTimeStamp	O	
Profile_Name	CharacterString	O	

# BACnet point table

## (19) Maximum Starting Time - hour (AO)

Property Identifier	Property Datatype	RW	Description
Object_Identifier	BACnetObjectIdentifier	R	
Object_Name	CharacterString	R	gateway_time hour peak set
Object_Type	BACnetObjectType	R	ANALOG_OUTPUT
Present_Value	REAL	W	
Description	CharacterString	O	(gateway_time hour peak set)
Device_Type	CharacterString	O	
Status_Flags	BACnetStatusFlags	R	
Event_State	BACnetEventState	R	
Reliability	BACnetReliability	O	
Out_Of_Service	BOOLEAN	R	Always FALSE
Update_Interval	Unsigned	O	
Units	BACnetEngineeringUnits	R	
Priority_Array	BACnetPriorityArray	O	
Relinquish_Default	REAL	O	
COV_Increment	REAL	O	1.0 fixed
Time_Delay	Unsigned	O	
Notification_Class	Unsigned	O	
High_Limit	REAL	O	
Low_Limit	REAL	O	
Deadband	REAL	O	
Limit_Enable	BACnetLimitEnable	O	
Event_Enable	BACnetEventTransitionBits	O	
Acked_Transitions	BACnetEventTransitionBits	O	
Notify_Type	BACnetNotifyType	O	
Event_Time_Stamps	BACnetARRAY[3] of BACnetTimeStamp	O	
Profile_Name	CharacterString	O	

## BACnet point table

(20) Maximum Starting Time - minute (AI)

Property Identifier	Property Datatype	RW	Description
Object_Identifier	BACnetObjectIdentifier	R	
Object_Name	CharacterString	R	gateway_time minute peak
Object_Type	BACnetObjectType	R	ANALOG_INPUT
Present_Value	REAL	R	
Description	CharacterString	O	(gateway_time hour peak)
Device_Type	CharacterString	O	
Status_Flags	BACnetStatusFlags	R	
Event_State	BACnetEventState	R	
Reliability	BACnetReliability	O	
Out_Of_Service	BOOLEAN	R	Always FALSE
Update_Interval	Unsigned	O	
Units	BACnetEngineeringUnits	R	
Min_Pres_Value	REAL	O	
Max_Pres_Value	REAL	O	
Resolution	REAL	O	
COV_Increment	REAL	O	1.0 fixed
Time_Delay	Unsigned	O	
Notification_Class	Unsigned	O	
High_Limit	REAL	O	
Low_Limit	REAL	O	
Deadband	REAL	O	
Limit_Enable	BACnetLimitEnable	O	
Event_Enable	BACnetEventTransitionBits	O	
Acked_Transitions	BACnetEventTransitionBits	O	
Notify_Type	BACnetNotifyType	O	
Event_Time_Stamps	BACnetARRAY[3] of BACnetTimeStamp	O	
Profile_Name	CharacterString	O	

# BACnet point table

## (21) Maximum Starting Time - minute (AO)

Property Identifier	Property Datatype	RW	Description
Object_Identifier	BACnetObjectIdentifier	R	
Object_Name	CharacterString	R	gateway_time minute peak set
Object_Type	BACnetObjectType	R	ANALOG_OUTPUT
Present_Value	REAL	W	
Description	CharacterString	O	(gateway_time hour peak set)
Device_Type	CharacterString	O	
Status_Flags	BACnetStatusFlags	R	
Event_State	BACnetEventState	R	
Reliability	BACnetReliability	O	
Out_Of_Service	BOOLEAN	R	Always FALSE
Update_Interval	Unsigned	O	
Units	BACnetEngineeringUnits	R	
Priority_Array	BACnetPriorityArray	O	
Relinquish_Default	REAL	O	
COV_Increment	REAL	O	1.0 fixed
Time_Delay	Unsigned	O	
Notification_Class	Unsigned	O	
High_Limit	REAL	O	
Low_Limit	REAL	O	
Deadband	REAL	O	
Limit_Enable	BACnetLimitEnable	O	
Event_Enable	BACnetEventTransitionBits	O	
Acked_Transitions	BACnetEventTransitionBits	O	
Notify_Type	BACnetNotifyType	O	
Event_Time_Stamps	BACnetARRAY[3] of BACnetTimeStamp	O	
Profile_Name	CharacterString	O	

# BACnet point table

## (22) Minimum Starting Time - hour (AI)

Property Identifier	Property Datatype	RW	Description
Object_Identifier	BACnetObjectIdentifier	R	
Object_Name	CharacterString	R	gateway_time hour valley
Object_Type	BACnetObjectType	R	ANALOG_INPUT
Present_Value	REAL	R	
Description	CharacterString	O	(gateway_time hour valley)
Device_Type	CharacterString	O	
Status_Flags	BACnetStatusFlags	R	
Event_State	BACnetEventState	R	
Reliability	BACnetReliability	O	
Out_Of_Service	BOOLEAN	R	Always FALSE
Update_Interval	Unsigned	O	
Units	BACnetEngineeringUnits	R	
Min_Pres_Value	REAL	O	
Max_Pres_Value	REAL	O	
Resolution	REAL	O	
COV_Increment	REAL	O	1.0 fixed
Time_Delay	Unsigned	O	
Notification_Class	Unsigned	O	
High_Limit	REAL	O	
Low_Limit	REAL	O	
Deadband	REAL	O	
Limit_Enable	BACnetLimitEnable	O	
Event_Enable	BACnetEventTransitionBits	O	
Acked_Transitions	BACnetEventTransitionBits	O	
Notify_Type	BACnetNotifyType	O	
Event_Time_Stamps	BACnetARRAY[3] of BACnetTimeStamp	O	
Profile_Name	CharacterString	O	

# BACnet point table

## (23) Minimum Starting Time - hour (AO)

Property Identifier	Property Datatype	RW	Description
Object_Identifier	BACnetObjectIdentifier	R	
Object_Name	CharacterString	R	gateway_time hour valley set
Object_Type	BACnetObjectType	R	ANALOG_OUTPUT
Present_Value	REAL	W	
Description	CharacterString	O	(gateway_time hour valley set)
Device_Type	CharacterString	O	
Status_Flags	BACnetStatusFlags	R	
Event_State	BACnetEventState	R	
Reliability	BACnetReliability	O	
Out_Of_Service	BOOLEAN	R	Always FALSE
Update_Interval	Unsigned	O	
Units	BACnetEngineeringUnits	R	
Priority_Array	BACnetPriorityArray	O	
Relinquish_Default	REAL	O	
COV_Increment	REAL	O	1.0 fixed
Time_Delay	Unsigned	O	
Notification_Class	Unsigned	O	
High_Limit	REAL	O	
Low_Limit	REAL	O	
Deadband	REAL	O	
Limit_Enable	BACnetLimitEnable	O	
Event_Enable	BACnetEventTransitionBits	O	
Acked_Transitions	BACnetEventTransitionBits	O	
Notify_Type	BACnetNotifyType	O	
Event_Time_Stamps	BACnetARRAY[3] of BACnetTimeStamp	O	
Profile_Name	CharacterString	O	

# BACnet point table

## (24) Minimum Starting Time - minute (AI)

Property Identifier	Property Datatype	RW	Description
Object_Identifier	BACnetObjectIdentifier	R	
Object_Name	CharacterString	R	gateway_time minute valley
Object_Type	BACnetObjectType	R	ANALOG_INPUT
Present_Value	REAL	R	
Description	CharacterString	O	(gateway_time minute valley)
Device_Type	CharacterString	O	
Status_Flags	BACnetStatusFlags	R	
Event_State	BACnetEventState	R	
Reliability	BACnetReliability	O	
Out_Of_Service	BOOLEAN	R	Always FALSE
Update_Interval	Unsigned	O	
Units	BACnetEngineeringUnits	R	
Min_Pres_Value	REAL	O	
Max_Pres_Value	REAL	O	
Resolution	REAL	O	
COV_Increment	REAL	O	1.0 fixed
Time_Delay	Unsigned	O	
Notification_Class	Unsigned	O	
High_Limit	REAL	O	
Low_Limit	REAL	O	
Deadband	REAL	O	
Limit_Enable	BACnetLimitEnable	O	
Event_Enable	BACnetEventTransitionBits	O	
Acked_Transitions	BACnetEventTransitionBits	O	
Notify_Type	BACnetNotifyType	O	
Event_Time_Stamps	BACnetARRAY[3] of BACnetTimeStamp	O	
Profile_Name	CharacterString	O	



# BACnet point table

## (25) Minimum Starting Time - minute (AO)

Property Identifier	Property Datatype	RW	Description
Object_Identifier	BACnetObjectIdentifier	R	
Object_Name	CharacterString	R	gateway_time minute valley set
Object_Type	BACnetObjectType	R	ANALOG_OUTPUT
Present_Value	REAL	W	
Description	CharacterString	O	(gateway_time minute valley set)
Device_Type	CharacterString	O	
Status_Flags	BACnetStatusFlags	R	
Event_State	BACnetEventState	R	
Reliability	BACnetReliability	O	
Out_Of_Service	BOOLEAN	R	Always FALSE
Update_Interval	Unsigned	O	
Units	BACnetEngineeringUnits	R	
Priority_Array	BACnetPriorityArray	O	
Relinquish_Default	REAL	O	
COV_Increment	REAL	O	1.0 fixed
Time_Delay	Unsigned	O	
Notification_Class	Unsigned	O	
High_Limit	REAL	O	
Low_Limit	REAL	O	
Deadband	REAL	O	
Limit_Enable	BACnetLimitEnable	O	
Event_Enable	BACnetEventTransitionBits	O	
Acked_Transitions	BACnetEventTransitionBits	O	
Notify_Type	BACnetNotifyType	O	
Event_Time_Stamps	BACnetARRAY[3] of BACnetTimeStamp	O	
Profile_Name	CharacterString	O	

## BACnet point table

(26) Average Starting Time - hour (AI)

Property Identifier	Property Datatype	RW	Description
Object_Identifier	BACnetObjectIdentifier	R	
Object_Name	CharacterString	R	gateway_time hour normal
Object_Type	BACnetObjectType	R	ANALOG_INPUT
Present_Value	REAL	R	
Description	CharacterString	O	(gateway_time hour normal)
Device_Type	CharacterString	O	
Status_Flags	BACnetStatusFlags	R	
Event_State	BACnetEventState	R	
Reliability	BACnetReliability	O	
Out_Of_Service	BOOLEAN	R	Always FALSE
Update_Interval	Unsigned	O	
Units	BACnetEngineeringUnits	R	
Min_Pres_Value	REAL	O	
Max_Pres_Value	REAL	O	
Resolution	REAL	O	
COV_Increment	REAL	O	1.0 fixed
Time_Delay	Unsigned	O	
Notification_Class	Unsigned	O	
High_Limit	REAL	O	
Low_Limit	REAL	O	
Deadband	REAL	O	
Limit_Enable	BACnetLimitEnable	O	
Event_Enable	BACnetEventTransitionBits	O	
Acked_Transitions	BACnetEventTransitionBits	O	
Notify_Type	BACnetNotifyType	O	
Event_Time_Stamps	BACnetARRAY[3] of BACnetTimeStamp	O	
Profile_Name	CharacterString	O	

# BACnet point table

## (27) Average Starting Time - hour (AO)

Property Identifier	Property Datatype	RW	Description
Object_Identifier	BACnetObjectIdentifier	R	
Object_Name	CharacterString	R	gateway_time hour normal set
Object_Type	BACnetObjectType	R	ANALOG_OUTPUT
Present_Value	REAL	W	
Description	CharacterString	O	(gateway_time hour normal set)
Device_Type	CharacterString	O	
Status_Flags	BACnetStatusFlags	R	
Event_State	BACnetEventState	R	
Reliability	BACnetReliability	O	
Out_Of_Service	BOOLEAN	R	Always FALSE
Update_Interval	Unsigned	O	
Units	BACnetEngineeringUnits	R	
Priority_Array	BACnetPriorityArray	O	
Relinquish_Default	REAL	O	
COV_Increment	REAL	O	1.0 fixed
Time_Delay	Unsigned	O	
Notification_Class	Unsigned	O	
High_Limit	REAL	O	
Low_Limit	REAL	O	
Deadband	REAL	O	
Limit_Enable	BACnetLimitEnable	O	
Event_Enable	BACnetEventTransitionBits	O	
Acked_Transitions	BACnetEventTransitionBits	O	
Notify_Type	BACnetNotifyType	O	
Event_Time_Stamps	BACnetARRAY[3] of BACnetTimeStamp	O	
Profile_Name	CharacterString	O	

# BACnet point table

(28) Average Starting Time - minute (AI)

Property Identifier	Property Datatype	RW	Description
Object_Identifier	BACnetObjectIdentifier	R	
Object_Name	CharacterString	R	gateway_time minute normal
Object_Type	BACnetObjectType	R	ANALOG_INPUT
Present_Value	REAL	R	
Description	CharacterString	O	(gateway_time minute normal)
Device_Type	CharacterString	O	
Status_Flags	BACnetStatusFlags	R	
Event_State	BACnetEventState	R	
Reliability	BACnetReliability	O	
Out_Of_Service	BOOLEAN	R	Always FALSE
Update_Interval	Unsigned	O	
Units	BACnetEngineeringUnits	R	
Min_Pres_Value	REAL	O	
Max_Pres_Value	REAL	O	
Resolution	REAL	O	
COV_Increment	REAL	O	1.0 fixed
Time_Delay	Unsigned	O	
Notification_Class	Unsigned	O	
High_Limit	REAL	O	
Low_Limit	REAL	O	
Deadband	REAL	O	
Limit_Enable	BACnetLimitEnable	O	
Event_Enable	BACnetEventTransitionBits	O	
Acked_Transitions	BACnetEventTransitionBits	O	
Notify_Type	BACnetNotifyType	O	
Event_Time_Stamps	BACnetARRAY[3] of BACnetTimeStamp	O	
Profile_Name	CharacterString	O	

# BACnet point table

## (29) Average Starting Time - minute (AO)

Property Identifier	Property Datatype	RW	Description
Object_Identifier	BACnetObjectIdentifier	R	
Object_Name	CharacterString	R	gateway_time minute normal set
Object_Type	BACnetObjectType	R	ANALOG_OUTPUT
Present_Value	REAL	W	
Description	CharacterString	O	(gateway_time minute normal set)
Device_Type	CharacterString	O	
Status_Flags	BACnetStatusFlags	R	
Event_State	BACnetEventState	R	
Reliability	BACnetReliability	O	
Out_Of_Service	BOOLEAN	R	Always FALSE
Update_Interval	Unsigned	O	
Units	BACnetEngineeringUnits	R	
Priority_Array	BACnetPriorityArray	O	
Relinquish_Default	REAL	O	
COV_Increment	REAL	O	1.0 fixed
Time_Delay	Unsigned	O	
Notification_Class	Unsigned	O	
High_Limit	REAL	O	
Low_Limit	REAL	O	
Deadband	REAL	O	
Limit_Enable	BACnetLimitEnable	O	
Event_Enable	BACnetEventTransitionBits	O	
Acked_Transitions	BACnetEventTransitionBits	O	
Notify_Type	BACnetNotifyType	O	
Event_Time_Stamps	BACnetARRAY[3] of BACnetTimeStamp	O	
Profile_Name	CharacterString	O	

# BACnet point table

## (30) Current Transformer Ratio (AI)

Property Identifier	Property Datatype	RW	Description
Object_Identifier	BACnetObjectIdentifier	R	
Object_Name	CharacterString	R	Mutual sensor multiple
Object_Type	BACnetObjectType	R	ANALOG_INPUT
Present_Value	REAL	R	
Description	CharacterString	O	(Mutual sensor multiple)
Device_Type	CharacterString	O	
Status_Flags	BACnetStatusFlags	R	
Event_State	BACnetEventState	R	
Reliability	BACnetReliability	O	
Out_Of_Service	BOOLEAN	R	Always FALSE
Update_Interval	Unsigned	O	
Units	BACnetEngineeringUnits	R	
Min_Pres_Value	REAL	O	
Max_Pres_Value	REAL	O	
Resolution	REAL	O	
COV_Increment	REAL	O	1.0 fixed
Time_Delay	Unsigned	O	
Notification_Class	Unsigned	O	
High_Limit	REAL	O	
Low_Limit	REAL	O	
Deadband	REAL	O	
Limit_Enable	BACnetLimitEnable	O	
Event_Enable	BACnetEventTransitionBits	O	
Acked_Transitions	BACnetEventTransitionBits	O	
Notify_Type	BACnetNotifyType	O	
Event_Time_Stamps	BACnetARRAY[3] of BACnetTimeStamp	O	
Profile_Name	CharacterString	O	

# BACnet point table

## (31) Current Transformer Ratio (AO)

Property Identifier	Property Datatype	RW	Description
Object_Identifier	BACnetObjectIdentifier	R	
Object_Name	CharacterString	R	Mutual sensor multiple set
Object_Type	BACnetObjectType	R	ANALOG_OUTPUT
Present_Value	REAL	W	
Description	CharacterString	O	(Mutual sensor multiple set)
Device_Type	CharacterString	O	
Status_Flags	BACnetStatusFlags	R	
Event_State	BACnetEventState	R	
Reliability	BACnetReliability	O	
Out_Of_Service	BOOLEAN	R	Always FALSE
Update_Interval	Unsigned	O	
Units	BACnetEngineeringUnits	R	
Priority_Array	BACnetPriorityArray	O	
Relinquish_Default	REAL	O	
COV_Increment	REAL	O	1.0 fixed
Time_Delay	Unsigned	O	
Notification_Class	Unsigned	O	
High_Limit	REAL	O	
Low_Limit	REAL	O	
Deadband	REAL	O	
Limit_Enable	BACnetLimitEnable	O	
Event_Enable	BACnetEventTransitionBits	O	
Acked_Transitions	BACnetEventTransitionBits	O	
Notify_Type	BACnetNotifyType	O	
Event_Time_Stamps	BACnetARRAY[3] of BACnetTimeStamp	O	
Profile_Name	CharacterString	O	

# BACnet point table

## (32) Gateway Communication Check (AI)

Property Identifier	Property Datatype	RW	Description
Object_Identifier	BACnetObjectIdentifier	R	
Object_Name	CharacterString	R	gateway_communication check
Object_Type	BACnetObjectType	R	ANALOG_INPUT
Present_Value	REAL	R	
Description	CharacterString	O	(gateway_communication check)
Device_Type	CharacterString	O	
Status_Flags	BACnetStatusFlags	R	
Event_State	BACnetEventState	R	
Reliability	BACnetReliability	O	
Out_Of_Service	BOOLEAN	R	Always FALSE
Update_Interval	Unsigned	O	
Units	BACnetEngineeringUnits	R	
Min_Pres_Value	REAL	O	
Max_Pres_Value	REAL	O	
Resolution	REAL	O	
COV_Increment	REAL	O	1.0 fixed
Time_Delay	Unsigned	O	
Notification_Class	Unsigned	O	
High_Limit	REAL	O	
Low_Limit	REAL	O	
Deadband	REAL	O	
Limit_Enable	BACnetLimitEnable	O	
Event_Enable	BACnetEventTransitionBits	O	
Acked_Transitions	BACnetEventTransitionBits	O	
Notify_Type	BACnetNotifyType	O	
Event_Time_Stamps	BACnetARRAY[3] of BACnetTimeStamp	O	
Profile_Name	CharacterString	O	



# BACnet point table

Indoor

(1) Indoor Stop/Start Status (BI)

Property Identifier	Property Datatype	RW	Description
Object_Identifier	BACnetObjectIdentifier	R	
Object_Name	CharacterString	R	indoor_onoff state
Object_Type	BACnetObjectType	R	BINARY_INPUT
Present_Value	BACnetBinaryPV	W	
Description	CharacterString	O	indoor_onoff state
Device_Type	CharacterString	O	
Status_Flags	BACnetStatusFlags	R	
Event_State	BACnetEventState	R	
Reliability	BACnetReliability	O	
Out_Of_Service	BOOLEAN	R	Always FALSE
Polarity	BACnetPolarity	R	NORMAL fixed
Inactive_Text	CharacterString	O	OFF
Active_Text	CharacterString	O	ON
Change_Of_State_Time	BACnetDateTime	O	
Change_Of_State_Count	Unsigned	O	
Time_Of_State_Count_Reset	BACnetDateTime	O	
Elapsed_Active_Time	Unsigned32	O	
Time_Of_Active_Time_Reset	BACnetDateTime	O	
Time_Delay	Unsigned	O	
Notification_Class	Unsigned	O	
Alarm_Value	BACnetBinaryPV	O	
Event_Enable	BACnetEventTransitionBits	O	
Acked_Transitions	BACnetEventTransitionBits	O	
Notify_Type	BACnetNotifyType	O	
Event_Time_Stamps	BACnetARRAY[3] of BACnetTimeStamp	O	
Profile_Name	CharacterString	O	

# BACnet point table

## (2) Start/Stop Control (BO)

Property Identifier	Property Datatype	RW	Description
Object_Identifier	BACnetObjectIdentifier	R	
Object_Name	CharacterString	R	indoor_onoff set
Object_Type	BACnetObjectType	R	BINARY_OUTPUT
Present_Value	BACnetBinaryPV	W	
Description	CharacterString	O	indoor_onoff set
Device_Type	CharacterString	O	
Status_Flags	BACnetStatusFlags	R	
Event_State	BACnetEventState	R	
Reliability	BACnetReliability	O	
Out_Of_Service	BOOLEAN	R	Always FALSE
Polarity	BACnetPolarity	R	NORMAL fixed
Inactive_Text	CharacterString	O	OFF
Active_Text	CharacterString	O	ON
Change_Of_State_Time	BACnetDateTime	O	
Change_Of_State_Count	Unsigned	O	
Time_Of_State_Count_Reset	BACnetDateTime	O	
Elapsed_Active_Time	Unsigned32	O	
Time_Of_Active_Time_Reset	BACnetDateTime	O	
Time_Delay	Unsigned	O	
Notification_Class	Unsigned	O	
Alarm_Value	BACnetBinaryPV	O	
Event_Enable	BACnetEventTransitionBits	O	
Acked_Transitions	BACnetEventTransitionBits	O	
Notify_Type	BACnetNotifyType	O	
Event_Time_Stamps	BACnetARRAY[3] of BACnetTimeStamp	O	
Profile_Name	CharacterString	O	

# BACnet point table

## (3) Indoor Operating Mode (MSI)

Property Identifier	Property Datatype	RW	Description
Object_Identifier	BACnetObjectIdentifier	R	
Object_Name	CharacterString	R	indoor_workmode
Object_Type	BACnetObjectType	R	MULTI-STATE_INPUT
Present_Value	Unsigned	R	
Description	CharacterString	O	indoor_workmode
Device_Type	CharacterString	O	
Status_Flags	BACnetStatusFlags	R	
Event_State	BACnetEventState	R	
Reliability	BACnetReliability	O	
Out_Of_Service	BOOLEAN	R	Always FALSE
Number_Of_States	Unsigned	R	5
State_Text	BACnetARRAY[N]of CharacterString	O	1:Auto 2:Fan 3:Cool 4:Dry 5:Heat
Time_Delay	Unsigned	O	
Notification_Class	Unsigned	O	
Alarm_Value	List of Unsigned	O	
Event_Enable	List of Unsigned	O	
Event_Enable	BACnetEventTransitionBits	O	
Acked_Transitions	BACnetEventTransitionBits	O	
Notify_Type	BACnetNotifyType		
Event_Time_Stamps	BACnetARRAY[3] of BACnetTimeStamp	O	
Profile_Name	CharacterString	O	

# BACnet point table

## (4) Indoor Operating Mode (MSO)

Property Identifier	Property Datatype	RW	Description
Object_Identifier	BACnetObjectIdentifier	R	
Object_Name	CharacterString	R	indoor_workmode set
Object_Type	BACnetObjectType	R	MULTI-STATE_OUTPUT
Present_Value	Unsigned	W	
Description	CharacterString	O	indoor_workmode set
Device_Type	CharacterString	O	
Status_Flags	BACnetStatusFlags	R	
Event_State	BACnetEventState	R	
Reliability	BACnetReliability	O	
Out_Of_Service	BOOLEAN	R	Always FALSE
Number_Of_States	Unsigned	R	5
State_Text	BACnetARRAY[N]of CharacterString	O	1:Auto 2:Fan 3:Cool 4:Dry 5:Heat
Priority_Array	BACnetPriorityArray	R	
Relinquish_Default	Unsigned	R	
Time_Delay	Unsigned	O	
Notification_Class	Unsigned	O	
Feedback_Value	Unsigned	O	
Event_Enable	BACnetEventTransitionBits	O	
Acked_Transitions	BACnetEventTransitionBits	O	
Notify_Type	BACnetNotifyType	O	
Event_Time_Stamps	BACnetARRAY[3] of BACnetTimeStamp	O	
Profile_Name	CharacterString	O	

## BACnet point table

### (5) Indoor Air Speed (MSI)

Property Identifier	Property Datatype	RW	Description
Object_Identifier	BACnetObjectIdentifier	R	
Object_Name	CharacterString	R	indoor_fanspeed
Object_Type	BACnetObjectType	R	MULTI-STATE_INPUT
Present_Value	Unsigned	R	
Description	CharacterString	O	indoor_fanspeed
Device_Type	CharacterString	O	
Status_Flags	BACnetStatusFlags	R	
Event_State	BACnetEventState	R	
Reliability	BACnetReliability	O	
Out_Of_Service	BOOLEAN	R	Always FALSE
Number_Of_States	Unsigned	R	4
State_Text	BACnetARRAY[N]of CharacterString	O	1:Auto 2:Low 3:Middle 4:High
Time_Delay	Unsigned	O	
Notification_Class	Unsigned	O	
Alarm_Value	List of Unsigned	O	
Event_Enable	List of Unsigned	O	
Event_Enable	BACnetEventTransitionBits	O	
Acked_Transitions	BACnetEventTransitionBits	O	
Notify_Type	BACnetNotifyType		
Event_Time_Stamps	BACnetARRAY[3] of BACnetTimeStamp	O	
Profile_Name	CharacterString	O	

# BACnet point table

## (6) Indoor Air Speed (MSO)

Property Identifier	Property Datatype	RW	Description
Object_Identifier	BACnetObjectIdentifier	R	
Object_Name	CharacterString	R	indoor_fanspeed set
Object_Type	BACnetObjectType	R	MULTI-STATE_OUTPUT
Present_Value	Unsigned	W	
Description	CharacterString	O	indoor_fanspeed set
Device_Type	CharacterString	O	
Status_Flags	BACnetStatusFlags	R	
Event_State	BACnetEventState	R	
Reliability	BACnetReliability	O	
Out_Of_Service	BOOLEAN	R	Always FALSE
Number_Of_States	Unsigned	R	4
State_Text	BACnetARRAY[N]of CharacterString	O	1:Auto 2:Low 3:Middle 4:High
Priority_Array	BACnetPriorityArray	R	
Relinquish_Default	Unsigned	R	
Time_Delay	Unsigned	O	
Notification_Class	Unsigned	O	
Feedback_Value	Unsigned	O	
Event_Enable	BACnetEventTransitionBits	O	
Acked_Transitions	BACnetEventTransitionBits	O	
Notify_Type	BACnetNotifyType	O	
Event_Time_Stamps	BACnetARRAY[3] of BACnetTimeStamp	O	
Profile_Name	CharacterString	O	

# BACnet point table

## (7) Indoor Actual Temperature (AI)

Property Identifier	Property Datatype	RW	Description
Object_Identifier	BACnetObjectIdentifier	R	
Object_Name	CharacterString	R	indoor_temp
Object_Type	BACnetObjectType	R	ANALOG_INPUT
Present_Value	REAL	R	
Description	CharacterString	O	indoor_temp
Device_Type	CharacterString	O	
Status_Flags	BACnetStatusFlags	R	
Event_State	BACnetEventState	R	
Reliability	BACnetReliability	O	
Out_Of_Service	BOOLEAN	R	Always FALSE
Update_Interval	Unsigned	O	
Units	BACnetEngineeringUnits	R	
Min_Pres_Value	REAL	O	
Max_Pres_Value	REAL	O	
Resolution	REAL	O	
COV_Increment	REAL	O	1.0 fixed
Time_Delay	Unsigned	O	
Notification_Class	Unsigned	O	
High_Limit	REAL	O	
Low_Limit	REAL	O	
Deadband	REAL	O	
Limit_Enable	BACnetLimitEnable	O	
Event_Enable	BACnetEventTransitionBits	O	
Acked_Transitions	BACnetEventTransitionBits	O	
Notify_Type	BACnetNotifyType	O	
Event_Time_Stamps	BACnetARRAY[3] of BACnetTimeStamp	O	
Profile_Name	CharacterString	O	

# BACnet point table

## (8) Indoor Temperature Setting (AO)

Property Identifier	Property Datatype	RW	Description
Object_Identifier	BACnetObjectIdentifier	R	
Object_Name	CharacterString	R	indoor_temp set
Object_Type	BACnetObjectType	R	ANALOG_OUTPUT
Present_Value	REAL	W	
Description	CharacterString	O	indoor_temp set
Device_Type	CharacterString	O	
Status_Flags	BACnetStatusFlags	R	
Event_State	BACnetEventState	R	
Reliability	BACnetReliability	O	
Out_Of_Service	BOOLEAN	R	Always FALSE
Update_Interval	Unsigned	O	
Units	BACnetEngineeringUnits	R	
Priority_Array	BACnetPriorityArray	O	
Relinquish_Default	REAL	O	
COV_Increment	REAL	O	1.0 fixed
Time_Delay	Unsigned	O	
Notification_Class	Unsigned	O	
High_Limit	REAL	O	
Low_Limit	REAL	O	
Deadband	REAL	O	
Limit_Enable	BACnetLimitEnable	O	
Event_Enable	BACnetEventTransitionBits	O	
Acked_Transitions	BACnetEventTransitionBits	O	
Notify_Type	BACnetNotifyType	O	
Event_Time_Stamps	BACnetARRAY[3] of BACnetTimeStamp	O	
Profile_Name	CharacterString	O	



# BACnet point table

## (9) Indoor Error Code (AI)

Property Identifier	Property Datatype	RW	Description
Object_Identifier	BACnetObjectIdentifier	R	
Object_Name	CharacterString	R	indoor_errorcode
Object_Type	BACnetObjectType	R	ANALOG_VALUE
Present_Value	REAL	R	
Description	CharacterString	O	indoor_errorcode
Device_Type	CharacterString	O	
Status_Flags	BACnetStatusFlags	R	
Event_State	BACnetEventState	R	
Reliability	BACnetReliability	O	
Out_Of_Service	BOOLEAN	R	Always FALSE
Update_Interval	Unsigned	O	
Units	BACnetEngineeringUnits	R	
Min_Pres_Value	REAL	O	
Max_Pres_Value	REAL	O	
Resolution	REAL	O	
COV_Increment	REAL	O	
Time_Delay	Unsigned	O	
Notification_Class	Unsigned	O	
High_Limit	REAL	O	
Low_Limit	REAL	O	
Deadband	REAL	O	
Limit_Enable	BACnetLimitEnable	O	
Event_Enable	BACnetEventTransitionBits	O	
Acked_Transitions	BACnetEventTransitionBits	O	
Notify_Type	BACnetNotifyType	O	
Event_Time_Stamps	BACnetARRAY[3] of BACnetTimeStamp	O	
Profile_Name	CharacterString	O	

# BACnet point table

## (10) Indoor Control Mode (MSI)

Property Identifier	Property Datatype	RW	Description
Object_Identifier	BACnetObjectIdentifier	R	
Object_Name	CharacterString	R	indoor_controlmode
Object_Type	BACnetObjectType	R	MULTI-STATE_INPUT
Present_Value	Unsigned	R	
Description	CharacterString	O	indoor_controlmode
Device_Type	CharacterString	O	
Status_Flags	BACnetStatusFlags	R	
Event_State	BACnetEventState	R	
Reliability	BACnetReliability	O	
Out_Of_Service	BOOLEAN	R	Always FALSE
Number_Of_States	Unsigned	R	4
State_Text	BACnetARRAY[N]of CharacterString	O	1:LIFO 2:LIFO 3:Central Ctrl 4: Force Ctrl
Time_Delay	Unsigned	O	
Notification_Class	Unsigned	O	
Alarm_Value	List of Unsigned	O	
Event_Enable	List of Unsigned	O	
Event_Enable	BACnetEventTransitionBits	O	
Acked_Transitions	BACnetEventTransitionBits	O	
Notify_Type	BACnetNotifyType		
Event_Time_Stamps	BACnetARRAY[3] of BACnetTimeStamp	O	
Profile_Name	CharacterString	O	

# BACnet point table

## (11) Indoor Control Mode (MSO)

Property Identifier	Property Datatype	RW	Description
Object_Identifier	BACnetObjectIdentifier	R	
Object_Name	CharacterString	R	indoor_controlmode set
Object_Type	BACnetObjectType	R	MULTI-STATE_OUTPUT
Present_Value	Unsigned	W	
Description	CharacterString	O	indoor_controlmode set
Device_Type	CharacterString	O	
Status_Flags	BACnetStatusFlags	R	
Event_State	BACnetEventState	R	
Reliability	BACnetReliability	O	
Out_Of_Service	BOOLEAN	R	Always FALSE
Number_Of_States	Unsigned	R	4
State_Text	BACnetARRAY[N]of CharacterString	O	1:LIFO 2:LIFO 3:Central Ctrl 4: Force Ctrl
Priority_Array	BACnetPriorityArray	R	
Relinquish_Default	Unsigned	R	
Time_Delay	Unsigned	O	
Notification_Class	Unsigned	O	
Feedback_Value	Unsigned	O	
Event_Enable	BACnetEventTransitionBits	O	
Acked_Transitions	BACnetEventTransitionBits	O	
Notify_Type	BACnetNotifyType	O	
Event_Time_Stamps	BACnetARRAY[3] of BACnetTimeStamp	O	
Profile_Name	CharacterString	O	

# BACnet point table

## (12) Indoor Maximum Power Consumption (AI)

Property Identifier	Property Datatype	RW	Description
Object_Identifier	BACnetObjectIdentifier	R	
Object_Name	CharacterString	R	indoor_power_peak
Object_Type	BACnetObjectType	R	ANALOG_VALUE
Present_Value	REAL	R	
Description	CharacterString	O	indoor_power_peak
Device_Type	CharacterString	O	
Status_Flags	BACnetStatusFlags	R	
Event_State	BACnetEventState	R	
Reliability	BACnetReliability	O	
Out_Of_Service	BOOLEAN	R	Always FALSE
Update_Interval	Unsigned	O	
Units	BACnetEngineeringUnits	R	
Min_Pres_Value	REAL	O	
Max_Pres_Value	REAL	O	
Resolution	REAL	O	
COV_Increment	REAL	O	
Time_Delay	Unsigned	O	
Notification_Class	Unsigned	O	
High_Limit	REAL	O	
Low_Limit	REAL	O	
Deadband	REAL	O	
Limit_Enable	BACnetLimitEnable	O	
Event_Enable	BACnetEventTransitionBits	O	
Acked_Transitions	BACnetEventTransitionBits	O	
Notify_Type	BACnetNotifyType	O	
Event_Time_Stamps	BACnetARRAY[3] of BACnetTimeStamp	O	
Profile_Name	CharacterString	O	

# BACnet point table

## (13) Indoor Minimum Power Consumption (AI)

Property Identifier	Property Datatype	RW	Description
Object_Identifier	BACnetObjectIdentifier	R	
Object_Name	CharacterString	R	indoor_power_valley
Object_Type	BACnetObjectType	R	ANALOG_VALUE
Present_Value	REAL	R	
Description	CharacterString	O	indoor_power_valley
Device_Type	CharacterString	O	
Status_Flags	BACnetStatusFlags	R	
Event_State	BACnetEventState	R	
Reliability	BACnetReliability	O	
Out_Of_Service	BOOLEAN	R	Always FALSE
Update_Interval	Unsigned	O	
Units	BACnetEngineeringUnits	R	
Min_Pres_Value	REAL	O	
Max_Pres_Value	REAL	O	
Resolution	REAL	O	
COV_Increment	REAL	O	
Time_Delay	Unsigned	O	
Notification_Class	Unsigned	O	
High_Limit	REAL	O	
Low_Limit	REAL	O	
Deadband	REAL	O	
Limit_Enable	BACnetLimitEnable	O	
Event_Enable	BACnetEventTransitionBits	O	
Acked_Transitions	BACnetEventTransitionBits	O	
Notify_Type	BACnetNotifyType	O	
Event_Time_Stamps	BACnetARRAY[3] of BACnetTimeStamp	O	
Profile_Name	CharacterString	O	

# BACnet point table

## (14) Indoor Average Power Consumption (AI)

Property Identifier	Property Datatype	RW	Description
Object_Identifier	BACnetObjectIdentifier	R	
Object_Name	CharacterString	R	indoor_power_normal
Object_Type	BACnetObjectType	R	ANALOG_VALUE
Present_Value	REAL	R	
Description	CharacterString	O	indoor_power_normal
Device_Type	CharacterString	O	
Status_Flags	BACnetStatusFlags	R	
Event_State	BACnetEventState	R	
Reliability	BACnetReliability	O	
Out_Of_Service	BOOLEAN	R	Always FALSE
Update_Interval	Unsigned	O	
Units	BACnetEngineeringUnits	R	
Min_Pres_Value	REAL	O	
Max_Pres_Value	REAL	O	
Resolution	REAL	O	
COV_Increment	REAL	O	
Time_Delay	Unsigned	O	
Notification_Class	Unsigned	O	
High_Limit	REAL	O	
Low_Limit	REAL	O	
Deadband	REAL	O	
Limit_Enable	BACnetLimitEnable	O	
Event_Enable	BACnetEventTransitionBits	O	
Acked_Transitions	BACnetEventTransitionBits	O	
Notify_Type	BACnetNotifyType	O	
Event_Time_Stamps	BACnetARRAY[3] of BACnetTimeStamp	O	
Profile_Name	CharacterString	O	

