

Range of indoor units

Perfect aesthetics and discretion and flexibility of installation characterise the range of cassettes NK2FL. With the two way air distribution and slim body the NK2FL will be suitable for a position where width is critical.



Noise levels

The adoption of a low noise fan assembly made it possible to obtain noise levels without equivalent.

Operating noise Level

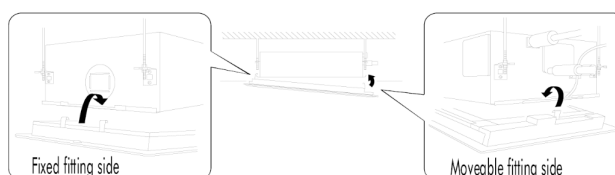
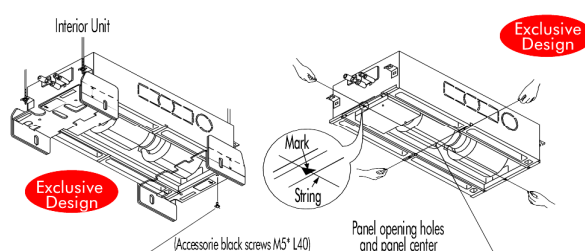
Model 7	Model 9	Model 12	Model 18	Model 24
30 to 24	33 to 26	34 to 28	35 to 29	38 to 33

Maintenance - simple

Accessibility with the fan/motor is simple by the adoption of a removable condensate tray. Once the removed maintenance is simplified.

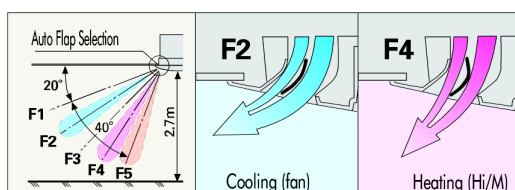
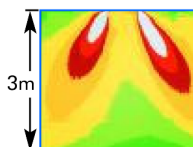
A system of exclusive assembly

The packing of the cassette is usable, like a template, for of cutting of the ceiling and for the adjusting height of the interior unit.



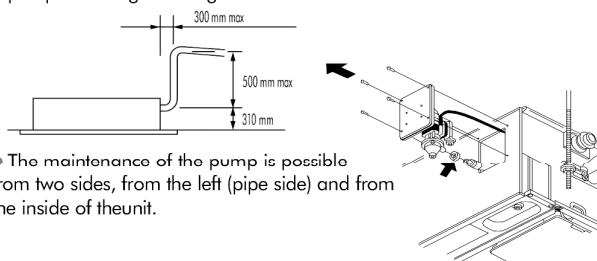
Diffusion of air

In addition to the motorised vane sweeping, in cooling mode as in heating mode, to optimize the diffusion of the treated air, the electronics of casse NK2FL automatically manages the flow of air and the adjustment of the angle of the vane angle.



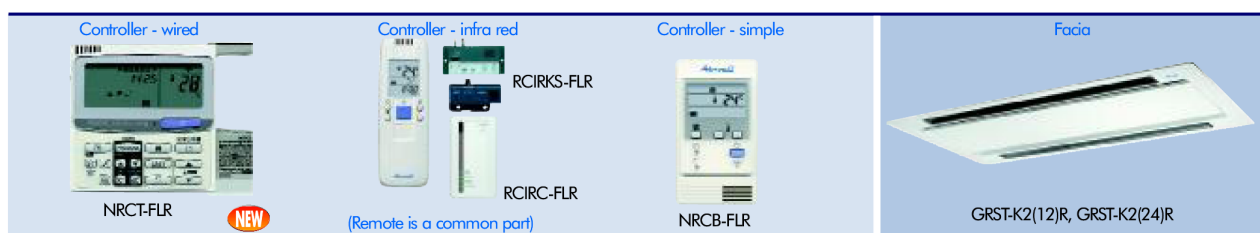
Condensate removal

● The head of the condensates pump is 500 mm from the drain outlet. This was achieved by increase of 250 mm was possible by the adoption of a pump of raising to strong flow.



● The maintenance of the pump is possible from two sides, from the left (pipe side) and from the inside of the unit.

Accessories



● Technical Characteristics

Model name			ST-NK2FL7R	ST-NK2FL9R	ST-NK2FL12R	ST-NK2FL16R	ST-NK2FL18R	ST-NK2FL24R	
Power source			220/230/240V, 1 phase-50, 60Hz						
Cooling capacity		kW	2.2	2.8	3.6	4.5	5.6	7.3	
		BTU/h	7,500	9,600	12,000	15,000	19,000	25,000	
Heating capacity		kW	2.5	3.2	4.2	5.0	6.3	8.0	
		BTU/h	8,500	11,000	14,000	17,000	21,000	27,000	
Power input	Cooling	kW	0.086/0.090/0.095	0.088/0.092/0.097	0.088/0.093/0.099	0.103/0.097/0.091	0.091/0.097/0.103	0.135/0.145/0.154	
	Heating	kW	0.055/0.058/0.062	0.055/0.060/0.064	0.057/0.061/0.066	0.070/0.065/0.060	0.060/0.065/0.070	0.100/0.109/0.117	
Running amperes	Cooling	A	0.45/0.45/0.45	0.44/0.45/0.45	0.44/0.45/0.45	0.45/0.45/0.45	0.45/0.45/0.45	0.64/0.65/0.66	
	Heating	A	0.29/0.29/0.30	0.28/0.29/0.30	0.28/0.29/0.30	0.30/0.29/0.29	0.29/0.29/0.30	0.46/0.48/0.49	
Fan motor	Type		Sirocco fan *1					Sirocco fan *2	
	Airflow rate (H/M/L)	m³/min	8/7/6	9/8/7	9.6/8.6/7.6	11/9/8		19/16/14	
	Output	kW	0.03					0.05	
Operating sound (H/M/L)		dB(A)	30/27/24	33/29/26	34/31/28	35/33/29		38/35/33	
Dimensions	Height	mm	350 + <8>						
	Width	mm	840 <1060>						1140 <1360>
	Depth	mm	600 <680>						
Piping connections	Liquid (Flare)	mm	6.35						9.52
	Gas (Flare)	mm	12.7						15.88
	Drain piping		VP-25						
Net weight		kg	23 + <7>						30 + <9>

Rated conditions

Cooling: Indoor air temperature 27°C DB/19°C WB, outdoor air temperature 35°C DB

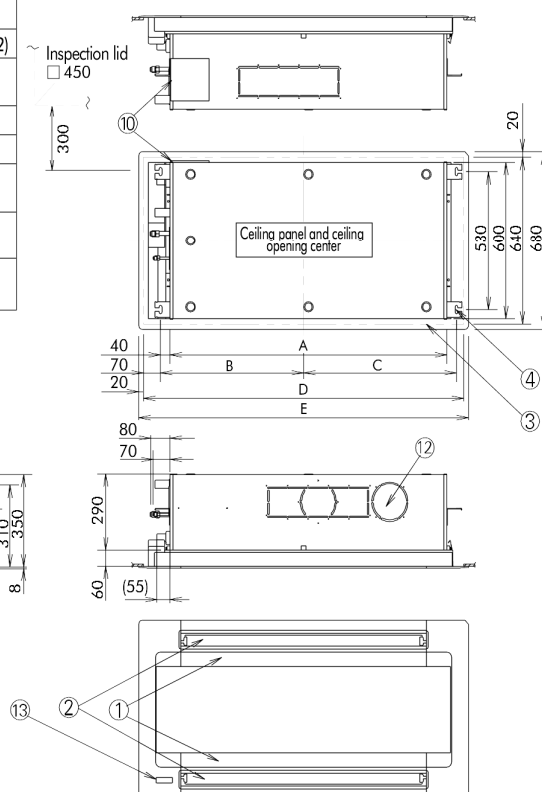
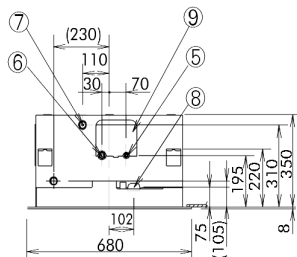
Heating: Indoor air temperature 20°C DB, outdoor air temperature 7°C DB/6°C WB

* The values in < > for external dimensions and net weight are the values for the optional ceiling panel.

Data subject to change without notice.

● Dimensions

① Air intake
② Air outlet
③ Ceiling opening dimensions
④ Suspension fitting (notch: 12 mm)
⑤ Refrigerant piping (liquid pipes)
⑥ Refrigerant piping (gas pipes)
⑦ Drain connection VP25 (outer diameter ø 32)
⑧ Inlet for option cord between power supply and unit
⑨ Drain pan, drain pump inspection lid
⑩ Drain pump inspection lid
⑪ Round flange (field supply) mounting part (fresh air inlet ø 125)
⑫ Discharge duct (field supply) mounting part (installation possible only on the right side)
⑬ Wireless remote controller (option) signal receiver installation part



	7~18 type	24 type	36~48 type
A	840	1,140	1,630
B	440	590	835
C	480	630	875
D	1,020	1,320	1,810
E	1,080	1,360	1,850
③ Ceiling opening dimensions	1,020x640	1,320x640	1,810x640
⑤ Refrigerant piping (liquid pipes)	ø6.35	ø9.52	
⑥ Refrigerant piping (gas pipes)	ø12.7	ø15.88	
⑫ Duct connection port (only on the right side)	⑫ x 1 pc.	⑫ x 2 pc.	⑫ x 3 pc.

