



# DAF

DUCTED 9-12-18

- Ducted line available in capacities from 2.6 up to 5 kW.
- Cooling & heating operation mode.
- "I feel" function with precise room temperature control.

## PRODUCT ADVANTAGES

- Wired and wireless remote controls provided as standard.
- Self diagnostic (error indications) in remote the wired remote control for ease of maintenance.
- Space saving due to low unit height.
- Centralized controller up to 16 units including weekly timer (optional).



RC08A



RCW3



RCW4 (optional)



## ACCESSORIES/OPTIONS

Acc.	Reference	Photo	Description	Additional accessory required	Function
RCW-4	7ACEL1613		Wired group control.		- Control up to 16 indoor unit as a group or individually. - Option to set in each indoor unit ON/OFF, set temperature, timer (daily and weekly), mode, fan speed and swing. - Indicating failure code.

## DAF TECHNICAL DATA

Indoor units		AWSI-DAF009-N11	AWSI-DAF012-N11	AWSI-DAF018-N11
Outdoor units 1~230V - 50 Hz		AWAU-YIF009-H11	AWAU-YIF012-H11	AWAU-YIF018-H11
<b>COOLING</b>				
Capacity	kW	<b>2.60</b>	<b>3.50</b>	<b>5.00</b>
Input power	kW	1.00	1.20	2.10
EER/Energy Label		2.60/D	2.91/C	2.38/F
Outdoor temperature operating limits	°C	18°/43° Dry bulb		
<b>HEATING</b>				
Capacity	kW	<b>2.85</b>	<b>3.60</b>	<b>5.70</b>
Input power	kW	0.97	1.10	1.80
COP/Energy Label		2.93/D	3.27/C	3.16/D
Outdoor temperature operating limits	°C	-7°/24° Dry bulb		
<b>INDOOR UNIT</b>				
Sound pressure level to 1 m (LS/MS/HS)	dB(A)	34/36/37	36/38/40	38/40/42
Sound power level (LS/MS/HS)	dB(A)	44/46/47	46/48/50	48/50/52
Airflow (LS/MS/HS)	m³/h	400/470/550	490/540/600	680/750/840
External static pressure	Pa	25 (0-25)	25 (0-25)	25 (0-25)
Dehumidification	l/h	1	1.3	1.9
Dimensions (WxHxD)	mm	913x680x220	913x680x220	1012x736x266
Weight	kg	27	27	36
Part number		<b>7SP032114</b>	<b>7SP032115</b>	<b>7SP032116</b>
<b>OUTDOOR UNIT</b>				
Sound pressure level to 1 m	dB(A)	55	56	56
Sound power level	dB(A)	65	66	66
Airflow	m³/h	2800	2800	2800
Compressor type		Rotary	Rotary	Rotary
Dimensions (WxHxD)	mm	848x320x540	848x320x540	848x320x540
Weight	kg	32	32	40
Part number		<b>7SP061778</b>	<b>7SP061779</b>	<b>7SP061780</b>
<b>POWER SUPPLY 1~230V - 50 HZ</b>				
Power supply side		Indoor & Outdoor	Indoor & Outdoor	Indoor & Outdoor
Power cable section	mm²	3x1.0 - 3x1.5	3x1.0 - 3x1.5	3x1.0 - 3x2.5
Fuse rating am	A	6 - 10	6 - 16	6 - 20
Electrical connections	mm²	2x0.75	2x0.75	2x0.75
<b>PIPE LINE</b>				
Suction pipe diameter	inches	3/8"	1/2"	1/2"
Liquid pipe diameter	inches	1/4"	1/4"	1/4"
Max length	m	20	20	20
Max height	m	15	15	15

## AIRWELL SOLUTIONS





# DAF

DUCTED 24 TO 60

- Ducted line available in capacities from 7 up to 16 kW.
- Cooling & heating operation mode.
- "I feel" function with precise room temperature control.
- Available in 3PH from 10 kW.

## PRODUCT ADVANTAGES

- Wired and wireless remote controls provided as standard.
- Self diagnostic (error indications) in remote the wired remote control for ease of maintenance.
- Space saving due to low unit height.
- Centralized controller up to 16 units including weekly timer (optional).



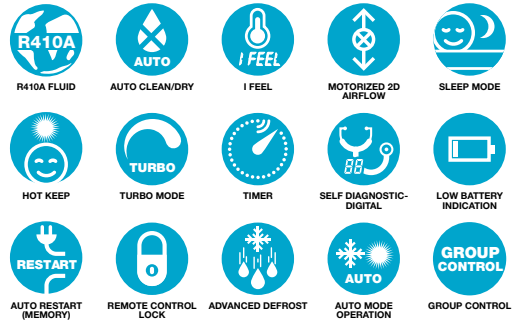
RC08A



RCW3



RCW4 (optional)



## ACCESSORIES/OPTIONS

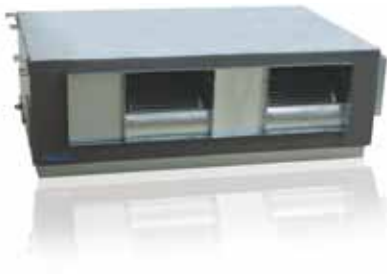
Acc.	Reference	Photo	Description	Additional accessory required	Function
RCW-4	7ACEL1613		Wired group control.		<ul style="list-style-type: none"> <li>- Control up to 16 indoor unit as a group or individually.</li> <li>- Option to set in each indoor unit ON/OFF, set temperature, timer (daily and weekly), mode, fan speed and swing.</li> <li>- Indicating failure code.</li> </ul>

## DAF TECHNICAL DATA

Indoor units		AWSI-DAF024-N11	AWSI-DAF030-N11	AWSI-DAF036-N11	AWSI-DAF042-N11	AWSI-DAF060-N11
Outdoor units 1~230V - 50 Hz		AWAU-YIF024-H11	AWAU-YIF030-H11	AWAU-YIF036-H11		
Outdoor units 3~400V - 50 Hz				AWAU-YIF036-H13	AWAU-YIF042-H13	AWAU-YIF060-H13
<b>COOLING</b>						
Capacity	kW	7.00	8.30	10.00	12.01	16.00
Input power	kW	2.66	3.00	4.00	5.35	6.50
EER/Energy Label		2.63/D	2.76/D	2.50/E	2.26/F	2.46/E
Outdoor temperature operating limits	°C	18°/43° Dry bulb				
<b>HEATING</b>						
Capacity	kW	8.00	9.10	11.00	14.00	18.50
Input power	kW	2.51	3.00	3.50	4.90	5.50
COP/Energy Label		3.18/D	3.03/D	3.14/D	2.85/D	3.36/C
Outdoor temperature operating limits	°C	-7°/24° Dry bulb				
<b>INDOOR UNIT</b>						
Sound pressure level to 1 m (LS/MS/HS)	dB(A)	40/42/44	40/42/44	46/48/50	46/48/50	48/50/53
Sound power level (LS/MS/HS)	dB(A)	50/52/54	50/52/54	56/58/60	56/58/60	58/60/63
Airflow (LS/MS/HS)	m³/h	1220/1350/1400	1200/1320/1400	1380/1650/2000	1380/1650/2000	1800/2100/2500
External static pressure	Pa	25 (0-100)	37 (0-100)	37 (0-150)	37 (0-150)	50 (0-150)
Dehumidification	l/h	2.4	2.5	2.9	4.3	4.7
Dimensions (WxHxD)	mm	1270x504x268	1270x530x268	1251x744x290	1251x744x290	1251x788x330
Weight	kg	37	37	57	57	66
Part number		7SP032117	7SP032118	7SP032119	7SP032120	7SP032121
<b>OUTDOOR UNIT</b>						
Sound pressure level to 1 m	dB(A)	59	59	60	60	64
Sound power level	dB(A)	69	69	70	70	74
Airflow	m³/h	3200	4200	4000	6000	6000
Compressor type		Rotary	Rotary	Scroll	Scroll	Scroll
Dimensions (WxHxD)	mm	1018x700x412	980x790x427	1018x840x412	950x1250x412	950x1250x412
Weight	kg	59	70	90	112	123
Part number 1~230V - 50 Hz		7SP061781	7SP061782	7SP061783		
Part number 3~400V - 50 Hz				7SP061784	7SP061785	7SP061786
<b>POWER SUPPLY 1~230V - 50 HZ</b>						
Power supply side		Indoor & Outdoor	Indoor & Outdoor	Indoor & Outdoor		
Power cable section	mm²	3x1.0 - 3x4.0	3x1.0 - 3x6.0	3x1.5 - 3x6.0		
Fuse rating am	A	6 - 25	6 - 32	10 - 40		
Electrical connections	mm²	2x0.75	2x0.75	2x0.75		
<b>POWER SUPPLY 3~400V - 50 HZ</b>						
Power supply side				Indoor & Outdoor	Indoor & Outdoor	Indoor & Outdoor
Power cable section	mm²			3x1.5 - 5x2.5	3x1.5 - 5x2.5	3x1.5 - 5x2.5
Fuse rating am	A			10 - 16	10 - 20	10 - 20
Electrical connections	mm²			2x0.75	2x0.75	2x0.75
<b>PIPE LINE</b>						
Suction pipe diameter	inches	5/8"	5/8"	3/4"	3/4"	3/4"
Liquid pipe diameter	inches	3/8"	3/8"	1/2"	1/2"	1/2"
Max length	m	30	30	50	50	50
Max height	m	15	15	30	30	30

## AIRWELL SOLUTIONS





# DAF

DUCTED 68 TO 136

- Ducted line available in capacities from 20 up to 39,5 kW.
- Cooling & heating operation mode.
- "I feel" function with precise room temperature control.

## PRODUCT ADVANTAGES

- Wired (IR receiver integrated) and wireless remote controls provided as standard.
- Self diagnostic (error indications) in remote the wired remote control for ease of maintenance.
- Space saving due to low unit height.
- Centralized controller up to 16 units including weekly timer (optional).



RC08A



RCW3



RCW4  
(optional)



## ACCESSORIES/OPTIONS

Acc.	Reference	Photo	Description	Additional accessory required	Function
RCW-4	7ACEL1613		Wired group control.		- Control up to 16 indoor unit as a group or individually. - Option to set in each indoor unit ON/OFF, set temperature, timer (daily and weekly), mode, fan speed and swing. - Indicating failure code.

## DAF TECHNICAL DATA

Indoor units		AWSI-DAF068-N13	AWSI-DAF085-N13	AWSI-DAF102-N13	AWSI-DAF136-N13
Outdoor units 3~400V - 50 Hz		AWAU-YIF068-H13	AWAU-YIF085-H13	AWAU-YIF102-H13	AWAU-YIF136-H13
<b>COOLING</b>					
<b>Capacity</b>	<b>kW</b>	<b>20.0</b>	<b>24.5</b>	<b>30.0</b>	<b>39.5</b>
Input power	kW	8.4	9.8	11.0	15.8
EER/Energy Label		2.38	2.5	2.73	2.5
Outdoor temperature operating limits	°C	18°/43° Dry bulb	-15°/43° Dry bulb	18°/43° Dry bulb	-15°/43° Dry bulb
<b>HEATING</b>					
<b>Capacity</b>	<b>kW</b>	<b>22.0</b>	<b>27.5</b>	<b>33.0</b>	<b>42.0</b>
Input power	kW	7.4	9.00	9.0	14.0
COP/Energy Label		2.97	3.05	3.67	3.0
Outdoor temperature operating limits	°C	-7°/24° Dry bulb			
<b>INDOOR UNIT</b>					
Sound pressure level to 1 m	dB(A)	56	54	57	58
Sound power level	dB(A)	66	64	67	68
Airflow	m³/h	4000	4800	5500	7000
External static pressure	Pa	200 (100-300)	110 (30-250)	120 (50-250)	150 (50-300)
Dehumidification	l/h	5.4	7.5	9	12
Outline Dimensions (WxHxD)	mm	1463x799x389	1500x1000x500	1500x1000x500	1700x1100x650
Package Dimensions (WxHxD)	mm	1540x880x470	1840x1200x673	1840x1200x673	1890x1460x835
Net Weight/Gross Weight	kg	86/109	150/200	156/206	215/265
<b>Part number</b>		<b>7SP032127</b>	<b>7SP032128</b>	<b>7SP032129</b>	<b>7SP032130</b>
<b>OUTDOOR UNIT</b>					
Sound pressure level to 1 m	dB(A)	65	66	67	69
Sound power level	dB(A)	75	76	77	79
Airflow	m³/h	8000	8000	11000	13000
Compressor type		Scroll	Scroll	Scroll	Scroll
Outline Dimensions (WxHxD)	mm	1150x1350x460	1150x1600x460	990x1772x880	1290x1772x880
Package Dimensions (WxHxD)	mm	1317x1475x502	1317x1730x502	1162x1950x980	1370x1950x980
Net Weight/Gross Weight	kg	158/174	185/200	216/266	285/330
<b>Part number 3~400V - 50 Hz</b>		<b>7SP061794</b>	<b>7SP061795</b>	<b>7SP061796</b>	<b>7SP061797</b>
<b>POWER SUPPLY 3~400V - 50 HZ</b>					
Power supply side		Indoor & Outdoor	Indoor & Outdoor	Indoor & Outdoor	Indoor & Outdoor
Power cable section	mm²	5x1.0 - 5x4.0	3x1.0 - 5x6.0	3x1.0 - 5x10.0	5x1.5 - 5x10.0
Fuse rating am	A	10 - 25	10 - 32	10 - 40	10 - 40
Electrical connections	mm²	2x0.75	2x0.75	2x0.75	2x0.75
<b>PIPE LINE</b>					
Suction pipe diameter	inches	3/4"	1"	1-1/8"	1-1/8"
Liquid pipe diameter	inches	3/8"	3/8"	1/2"	5/8"
Max length	m	30	30	30	30
Max height	m	50	50	50	50

## AIRWELL SOLUTIONS

