



**DC INVERTER range**

**K DCI Cassettes**

**Airwell**  
Air Conditioning

## INVERTER RANGE

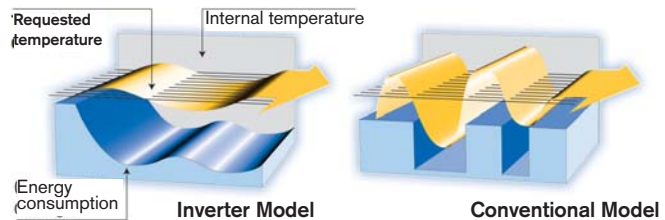
Never has technology gone so far to provide optimum user comfort. **K DCI** cassettes are specially suited to tertiary sector applications, meeting the air conditioning requirements in rooms of small and medium size. The cassettes have been designed to fit seamlessly into current trends. Beside their aesthetic qualities and silent running, they have been designed to provide a very high level of user comfort and to be very easy to fit for installers. The latest DC INVERTER technology, in combination with the use of the eco-friendly fluid **R410A** (that preserves the environment) make for optimum efficiency (class A energy label) and exceptional performance levels. (Operates in hot mode down to -15 °C).



The **K DC INVERTER** cassettes range is available with the ecologically friendly fluid **R410A**. This provides high energy efficiency, while preserving the ozone layer, and is easily recyclable. Its high density and high energy efficiency make for high performance coefficients, thereby providing significant energy savings.

### The Inverter technology comprises:

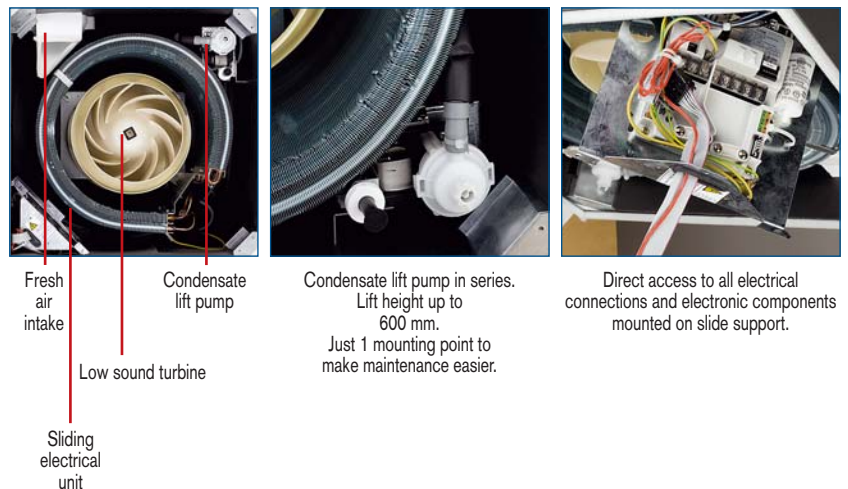
- A DC INVERTER type variable power compressor that provides better regulation and temperature control.
- 30% energy saving.
- ultra silent operation.



### Simplified installation and maintenance

Its ability to be built into 600 x 600 suspended ceiling modules and small height dimension (287 mm) provide an obvious solution to all installation constraints. K DCI has a fresh air intake and provides the option of air conditioning an adjacent room. Coming with a high efficiency regenerative air filter, the K DCI have motorised 4 blowing flaps to ensure uniform distribution of the treated air.

Easy installation and maintenance thanks to components being accessible by simply removing the front panel. (Electrical components, lift pump, etc.).

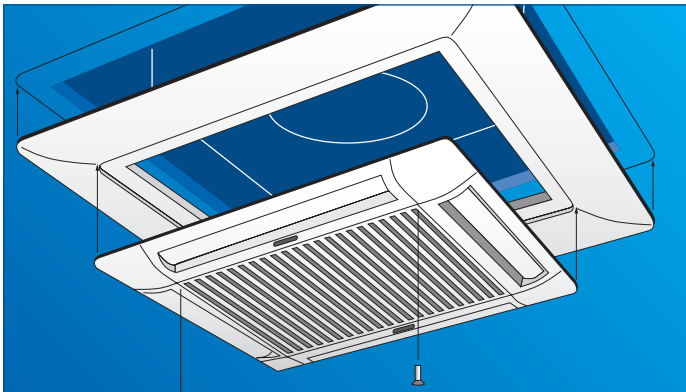


<b>Energy</b>		Air conditioner
Manufacturer	<b>Airwell</b>	
Outdoor unit	GC 9 DCI R410	
Indoor unit	ST K 9 DCI	
Economic	<b>A</b>	
Annual energy consumption, kWh in cooling mode		
<small>(the actual consumption depends on how the device is used and on the climate)</small>		
Cooling capacity	kW	2.5
<b>Energy efficiency level</b>		4.24
<small>at full load (must be as high as possible)</small>		
Type	Cooling only	
	Cooling and heating	←
	Air cooling	←
	Water cooling	
Heating capacity	kW	
Energy performance in heating mode		
<small>A: economic G: uneconomic</small>		
Noise		32
<small>dB(A)</small>		
A detailed information sheet is included in the brochure		
<small>Standard EN Air conditioner "Energy labelling" directive 2002/31/EC</small>		

■ K DCI Indoor units



K 9/12/18 DCI



The ceiling frame accessory enables a larger cut to be made in suspended ceilings to make on-site installation easier (electrical and cooling connections).

■ DCI Outdoor units

The heat-stable polyester material structure provides a reduction in the noise level and weight as well as a prolonged service life. The anticorrosion treatment with a High density powder paint coating ensures high resistance whatever the operating conditions.

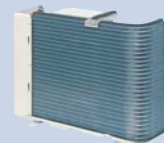


GC NG 9/12/18 DCI



❖ COMPRESSOR

A variable power DC INVERTER rotary type, this compressor provides high efficiency and increased acoustic isolation.



❖ CONDENSER

"Bluefin" hydrophilic treatment promotes the flow of condensates, while also providing corrosion protection to maintain performance levels and prolonging the service life.



❖ VENTILATOR MOTOR

A variable power DC INVERTER type, this high efficiency motor provides silent operation.



❖ PROPELLER

With 3 aerodynamic blades, the propeller offers better balance, enhances the exchange process and makes silent operation possible.

Its flexibility, user friendliness, ability to retain a constant temperature, broad operating range and extremely silent running make it an exceptional device.

■ Infrared remote control

Small-size and with excellent ergonomic properties, the AIRWELL infrared remote control is highly user friendly.

It can be used to program advanced multiple functions such as choosing between 3 ventilation speeds, night-time slow running, programming, dehumidification, the energy saving function and "I feel" function, and many others. One press of a button is all it takes for the desired temperature to be obtained and controlled with a high degree of precision.



# INVERTER RANGE



## K DC INVERTER Series

### K 9 DC INV

### K 12 DC INV

### K 18 DC INV

Heating capacity <sup>(1)</sup>	kW	3.4 (1.5-5)	4.5 (1.6-5.8)	6.3 (1.35-7.5)
Power input	kW	0.91	1.11	1.74
COP / Energy label		3.72 / A	3.81 / A	3.62 / B

Cooling capacity <sup>(2)</sup>	kW	2.5 (1.5-3.8)	3.5 (1.7-4.8)	5 (1.35-6.4)
Power input	kW	0.59	0.87	1.55
EER / Energy label		4.24 / A	4.00 / A	3.23 / B

## INDOOR UNITS

### K 9 DCI

### K 12 DCI

### K 18 DCI

Airflow (LS/NS/HS)	m³/h	450/530/600	450/560/620	510/630/730
Acoustic pressure to 1m (LS/HS) <sup>(3)</sup>	dB(A)	32/37	32/38	36/48
Dehumidification	l/h	1	1.5	2
Net Weight	kg	22.7	24.4	28
Built-in casing (LxIxH)	mm	571x571x287	571x571x287	571x571x287
Fascia (LxIxH)	mm	625x625x40	625x625x40	625x625x40

## OUTDOOR UNITS

### GC 9 DCI

### GC 12 DCI

### GC 18 DCI

Airflow	m³/h	1780	1780	2160
Acoustic pressure to 1m	dB(A)	50	52	53
Compressor type		Rotary DC Inverter	Rotary DC Inverter	Scroll DC Inverter
Operating limits Winter / Summer		- 15 °C / + 43 °C		
Net Weight	kg	40	40	43
Dimensions (WxDxH)	mm	795x290x610	795x290x610	795x290x610

## LINKING SPECIFICATIONS BETWEEN INDOOR AND OUTDOOR UNITS

### Power supply

		Indoor	Indoor	Indoor
Power supply side				
Power cable section	mm²	3x1.5	3x1.5	3x2.5
Fuse am	A	15	15	20
Electrical connection Ind./Out.	mm²	4x1.5	4x1.5	4x2.5

### Linking pipes

Max. length	m	20	20	25
Max. height	m	10	10	10
Suction pipe diameter	Inches	3/8"	3/8"	1/2"
Liquid pipe diameter	Inches	1/4"	1/4"	1/4"

(1) Nominal heating capacity: international conditions 20°C/12°C damp - Outdoor air: 7°C/6°C damp. (2) Nominal cooling capacity: international conditions (Standards NF EN 255.2 / 814.2) - 27°C/19°C damp - Outdoor air: 35°C/24°C damp. (3) Overall acoustic pressure in dB(A) (1 m) under nominal conditions: Outdoor unit in a free field over a reflecting plane - Indoor unit: installed in an average sized room, (PV-0.5s reverberation).

# Airwell



ACE MARKETING - 1 bis. av. du 8 mai 1945 - Saint-Quentin-en-Yvelines  
F - 78284 Guyancourt Cedex  
Fax : +33 (0) 1 39 44 65 17 - Tél. : +33 (0) 1 39 44 78 00  
[www.airwell.com](http://www.airwell.com)

your approved *Airwell* distributor

