

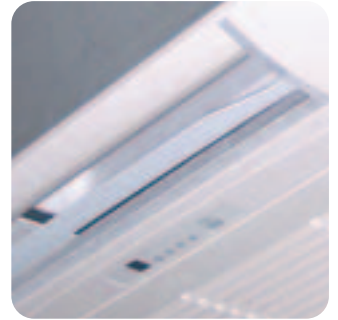
## NEVADA RANGE

# CKF

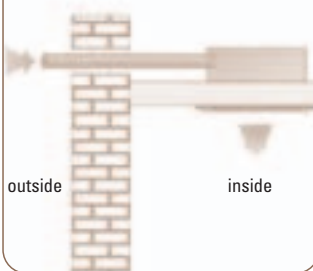
### CASSETTES

7 Heat Pump models  
From 2,8 kW to 12,35 kW

INDOOR UNIT **CKF 009-012-018**



### AIR RENEWAL

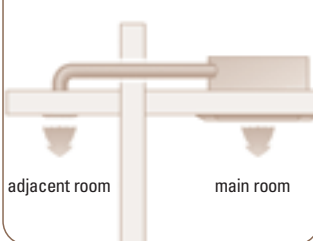


### PRODUCT ADVANTAGES

- Ideal for light commercial applications thanks to its ease of use and installation.
- New grille, modern style with elegant lines which blends in every interior decor.
- New 60 x 60 cm cassette unit for easy installation.
- Designed for integration in suspended ceilings.
- Four motorized air distribution flaps.
- R410A refrigerant.
- Very slim profile 219mm at size 9-12.
- Very slim profile 270mm at size 18.
- Heating and Cooling mode.
- Fresh air intake.
- Integrated condensate pump with a lift of 1m Max.
- Air distribution to an adjacent room.
- Up to 15 m pipe length between in. and outdoor units.
- Up to 7 m vertical high between in. and outdoor units.
- Self diagnostic LED lighting for ease of maintenance.
- Easy access to electrical components without opening ceiling.
- 2 panels optional available (hard ceiling / Suspended ceiling).
- Supplied with RC4 remote control.



### AIR CONDITIONING OF AN ADJACENT ROOM



RC4

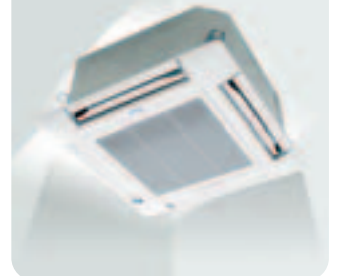
RCW2\*



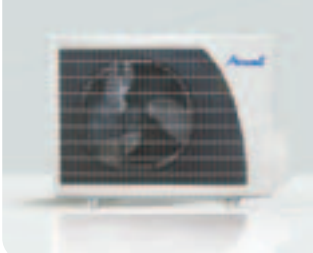
OUTDOOR UNIT  
**YAF 009-012 H**



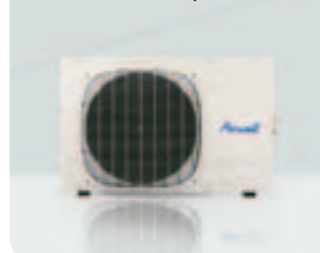
INDOOR UNIT **CKF 024-030-036-045**



OUTDOOR UNIT  
**GCN 17 NRC**



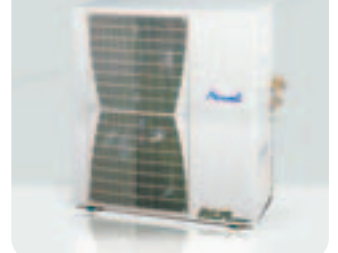
OUTDOOR UNIT  
**GCN 24 RC / RCT**



OUTDOOR UNIT  
**GCN 30 RC / RCT**



OUTDOOR UNIT  
**GCN 47 RCT**





## NEVADA CKF

		CKF 009	CKF 012	CKF 018	CKF 024	CKF 030	CKF 036	CKF 045
<b>Indoor Units</b>		<b>ST CKF 009</b>	<b>ST CKF 012</b>	<b>ST CKF 018</b>	<b>ST CKF 024</b>	<b>ST CKF 030</b>	<b>ST CKF 036</b>	<b>ST CKF 045</b>
Grille size	cm	600X600	600X600	600X600	900X900	900X900	900X900	900X900
<b>Outdoor Units</b>					<b>GCN24/24T</b>	<b>GCN30/30T</b>	<b>GCN37/37T</b>	<b>GCN47T</b>
<b>Outdoor Units</b>		<b>YAF 009 - H</b>	<b>YAF 012 - H</b>	<b>GCN 17NRC</b>	<b>GCN24RC/24RCT</b>	<b>GCN30RC/30RCT</b>	<b>GCN37RC/37RCT</b>	<b>GCN47RCT</b>
<b>Cooling</b>								
<b>Capacity</b>	kW	<b>2,8</b>	<b>3,3</b>	<b>5,2</b>	<b>6,8</b>	<b>8,3</b>	<b>9,7</b>	<b>12,35</b>
Power input	kW	0,82	1,06	1,67	2,25	2,9	3,48	4,4
EER/Energy Label		3,41 / A	3,11 / B	3,11 / B	3,0 / B	2,9 / C	2,8 / C	2,8 / C
Operating limits	°C	21°/ 46° Dry Bulb	21°/ 46° Dry Bulb	21°/ 46° Dry Bulb	21°/ 46° Dry Bulb	21°/ 46° Dry Bulb	21°/ 46° Dry Bulb	21°/ 46° Dry Bulb
<b>Heating</b>								
<b>Capacity</b>	kW	<b>2,82</b>	<b>3,4</b>	<b>5,25</b>	<b>7,8</b>	<b>8,94</b>	<b>10,1</b>	<b>13,2</b>
Power input	kW	0,74	0,97	1,59	2,33	2,88	3,6	4,63
COP/Energy Label		3,81 / A	3,51 / B	3,33 / C	3,0 / D	3,1 / D	2,8 / D	2,85 / D
Operating limits	°C	-9°/ 24° Dry Bulb	-9°/ 24° Dry Bulb	-9°/ 24° Dry Bulb	-9°/ 24° Dry Bulb	-9°/ 24° Dry Bulb	-9°/ 24° Dry Bulb	-9°/ 24° Dry Bulb
<b>Indoor unit</b>								
Sound pressure level 1 mt <sup>1</sup>	dB(A)	33/35/37	33/35/37	35/38/41	40/42/44	46/48/54	39/41/43	43/47/53
Sound power level <sup>1</sup>	dB(A)	43/45/47	43/45/47	45/48/51	50/52/54	56/59/64	39/41/43	43/47/53
Airflow <sup>1</sup>	m <sup>3</sup> /h	320/400/460	320/400/460	500/590/630	690/800/910	985/1120/1200	1025/1125/1220	1200/1330/1600
Dehumidification	l/h	0,92	1,35	2,4	2,5	3,2	4,1	5,4
Dimensions (WxDxH)	mm	575x219x575	575x219x575	575x270x575	840/230/840	840x230x840	840x300x840	840x300x840
Weight	kg	12,9	12,9	15,2	36	36	48	48
Frame dimensions 625x625	mm	625x40x625	625x40x625	625x40x625	-	-	-	-
Weight	kg	2,2	2,2	2,2	-	-	-	-
Frame dimensions 725x725	mm	725x40x725	725x40x725	725x40x725	-	-	-	-
Weight	kg	2,7	2,7	2,7	-	-	-	-
Frame dimensions 900x900	mm	-	-	-	955x57x955	955x57x955	955x57x955	955x57x955
Weight	kg	-	-	-	7	7	7	7
<b>Part number</b>		<b>7SP042193</b>	<b>7SP042194</b>	<b>7SP042195</b>	<b>7SP042196</b>	<b>7SP042197</b>	<b>7SP042198</b>	<b>7SP042199</b>
<b>Price</b>	€	-	-	-	-	-	-	-
<b>Part number Frame 625x625</b>		<b>7ACVF0478</b>	<b>7ACVF0478</b>	<b>7ACVF0478</b>	<b>7ACVF0506</b>	<b>7ACVF0506</b>	<b>7ACVF0506</b>	<b>7ACVF0506</b>
<b>Price</b>	€	-	-	-	-	-	-	-
<b>Part number Frame 725x725</b>		<b>7ACVF0479</b>	<b>7ACVF0479</b>	<b>7ACVF0479</b>	<b>7ACVF0506</b>	<b>7ACVF0506</b>	<b>7ACVF0506</b>	<b>7ACVF0506</b>
<b>Price</b>	€	-	-	-	-	-	-	-
<b>Outdoor unit</b>								
Sound pressure level 1 mt	dB(A)	49	53	54	58	59	61	64
Sound power level	dB(A)	52	62	65	67	69	70	71
Airflow	m <sup>3</sup> /h	1370	1450	2160	3100	3150	4150	4350
Compressor type		Rotary	Rotary	Rotary	Rotary	Rotary	Rotary	Scroll
Dimensions (WxDxH)	mm	830x245x545	830x245x545	795x290x610	900x340x680	900x340x860	900x340x970	900x970x340
Weight	kg	32	37	43	74	78	87	96
<b>Power supply 1-230V - 50 Hz</b>								
<b>Part number</b>		-	-	-	<b>7SP061594</b>	<b>7SP061601</b>	<b>7SP061621</b>	-
<b>Price</b>	€	-	-	-	-	-	-	-
<b>Power supply 1-230V - 50 Hz</b>								
<b>Part number</b>		<b>7SP061743</b>	<b>7SP061744</b>	<b>7SP061588</b>	<b>7SP061596</b>	<b>7SP061604</b>	<b>7SP061630</b>	-
<b>Price</b>	€	-	-	-	-	-	-	-
<b>Power supply 1-230V - 50 Hz</b>								
<b>Part number</b>		-	-	-	<b>7SP061597</b>	<b>7SP061602</b>	<b>7SP061622</b>	<b>7SP061624</b>
<b>Price</b>	€	-	-	-	-	-	-	-
<b>Power supply 1-230V - 50 Hz</b>								
<b>Part number</b>		-	-	-	<b>7SP061598</b>	<b>7SP061605</b>	<b>7SP061631</b>	<b>7SP061633</b>
<b>Price</b>	€	-	-	-	-	-	-	-
<b>Power supply 1-230V - 50Hz</b>								
Power supply side		Indoor	Indoor	Indoor	Outdoor	Outdoor	Outdoor	-
Power cable section	mm <sup>2</sup>	-	-	-	-	-	-	-
Fuse rating	A	10	10	16	20	25	25	-
Electrical connections	mm <sup>2</sup>	-	-	-	-	-	-	-
<b>Power supply 3-400V - 50Hz</b>								
Power supply side		-	-	-	Outdoor	Outdoor	Outdoor	Outdoor
Power cable section	mm <sup>2</sup>	-	-	-	-	-	-	-
Fuse rating	A	-	-	-	-	-	-	-
Electrical connections	mm <sup>2</sup>	-	-	-	-	-	-	-
<b>Pipe line</b>								
Suction pipe diameter	inches	3/8"	1/2"	1/2"	5/8"	5/8"	3/4"	3/4"
Liquid pipe diameter	inches	1/4"	1/4"	1/4"	3/8"	3/8"	3/8"	3/8"
Max lenght	m	15	15	15	30	30	50	50
Max height	m	7	7	7	15	15	25	25

<sup>1</sup>Data are relative to Low speed, Medium speed and High speed

**The panel is separated from unit and not delivered on the same box. CKF is delivered without panel.**

**For each order, decoration panel must be ordered according to the installation situation.**

<b>Accessories</b>		CKF 009	CKF 012	CKF 018	CKF 024	CKF 030	CKF 036	CKF 045
Mounting bracket	7ACTL0016	€						
Remote control RCW2	7ACEL1212	€						