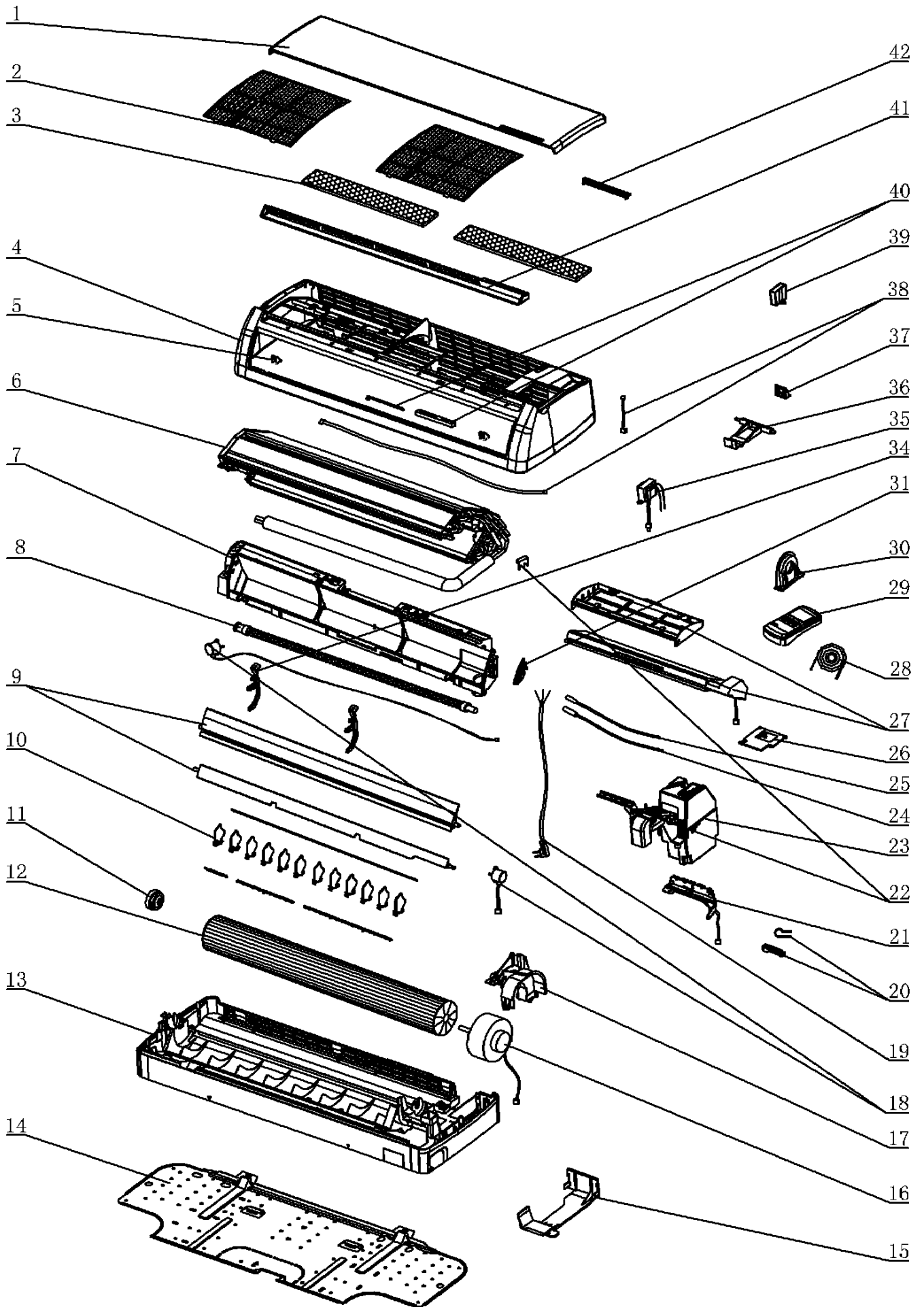


PX 9 et 12 / R410



Brand :Airwell Model : PX 9 / R410

Product Number : 7SP022725

Internal number : 4646

Version : Heat pump 230/1/50

Spare parts list used

Loc	Spare parts code	Replaced by	Qty	Description	Observation
7	4527434		1	Air diffuser assembly	
2	4518655		2	Air filter	
24	438082	231219	1	Battery probe length 320mm (black)	
11	4518662		1	Bearing assembly	
13	465700000		1	Bottom assembly	
8	4518664		1	Condensate drain pipe	
28	4520416		1	Defrost cable	
21	467300080R		1	Display board assembly	
23	467300156R		1	Electronic box ass'y	
27	4518663		1	Electrostatic filter	
6	4527173		1	Evaporator assembly	
16	4519864R		1	Fan motor 20W	
17	4518650		1	Fan motor support	
4	465720059		1	Front frame	
31	4518682		1	Gear box assy	
40	467480001		1	Ionizer	
38	4519900		1	Ionizer cable A	
39	467430000		1	Ionizer capacitor	
34	4518646		2	Louver support	
9	4526953		1	Lower louver	
30	4518651		1	Motor flange	
37	4518656		2	Mounting hook	
15	4518654		1	Pipes clamp	
19	4521158R		1	Power cord plug (lg: 2m)	
29	452760600R		1	RC-4 (HL) remote controller	
25	4519813		1	Room temperature probe (lg 320mmm)	
5	4526952		2	Screw cover	
18	452969400		1	Step motor A	
18	452969500		1	Step motor B	
41	465800018		1	Suction baffle ass'y	
1	465800009		1	Suction grill	
26	465340012		1	Terminal cover	
35	4518868R		1	Transformer	
36	4518657		1	Tubes lock	

Brand :Airwell Model : PX 9 / R410

Product Number : 7SP022725

Internal number : 4646

Version : Heat pump 230/1/50

Spare parts list used

Loc	Spare parts code	Replaced by	Qty	Description	Observation
12	4518661		1	Turbine D 91	
9	4518638		1	Upper louver	
10	4518640		2	Vertical deflector A	
10	4518641		10	Vertical deflector B	
14	4518670		1	Wall support	
20	4519147		1	Wire clip	

Brand :Airwell Model : PX 12 / R410

Product Number : 7SP022726

Internal number : 4647

Version : Heat pump 230/1/50

Spare parts list used

Loc	Spare parts code	Replaced by	Qty	Description	Observation
7	4527434		1	Air diffuser assembly	
2	4518655		2	Air filter	
24	438082	231219	1	Battery probe length 320mm (black)	
11	4518662		1	Bearing assembly	
13	465700000		1	Bottom assembly	
8	4518664		1	Condensate drain pipe	
28	4520416		1	Defrost cable	
21	467300080R		1	Display board assembly	
23	467300065R		1	Electronic unit assembly	
27	4518663		1	Electrostatic filter	
6	4527336		1	Evaporator	
16	4519864R		1	Fan motor 20W	
17	4518650		1	Fan motor support	
4	465720059		1	Front frame	
31	4518682		1	Gear box assy	
40	467480001		1	Ionizer	
38	4519900		1	Ionizer cable A	
39	467430000		1	Ionizer capacitor	
34	4518646		2	Louver support	
9	4526953		1	Lower louver	
30	4518651		1	Motor flange	
37	4518656		2	Mounting hook	
15	4518654		1	Pipes clamp	
19	4521158R		1	Power cord plug (lg: 2m)	
29	452760600R		1	RC-4 (HL) remote controller	
25	4519813		1	Room temperature probe (lg 320mmm)	
5	4526952		2	Screw cover	
18	452969400		1	Step motor A	
18	452969500		1	Step motor B	
41	465800018		1	Suction baffle ass'y	
1	465800009		1	Suction grill	
26	465340012		1	Terminal cover	
35	4518868R		1	Transformer	
36	4518657		1	Tubes lock	

Brand :Airwell Model : PX 12 / R410

Product Number : 7SP022726

Internal number : 4647

Version : Heat pump 230/1/50

Spare parts list used

Loc	Spare parts code	Replaced by	Qty	Description	Observation
12	4518661		1	Turbine D 91	
9	4518638		1	Upper louver	
10	4518640		2	Vertical deflector A	
10	4518641		10	Vertical deflector B	
14	4518670		1	Wall support	
20	4519147		1	Wire clip	