

HIVELL  
HAF

WALL MOUNTED RANGE

*Airwell*



# Airwell



OUTDOOR UNIT  
GC 7-9 ARC



OUTDOOR UNIT  
GC 12 ARC



RC4



RCW2 (Optional)



CLEAN AIR FOR YOUR HEALTH



Standard filter



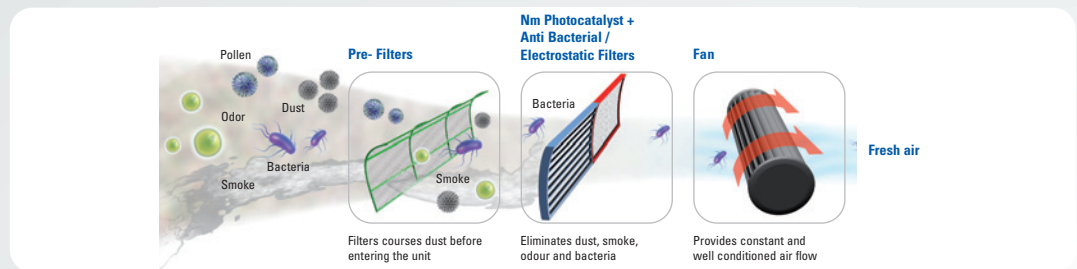
Active charcoal filter



Electrostatic filter

This range has an exceptional air treatment capability (guaranteed by 3 levels of filtering) ensuring optimum comfort to the occupants.

- **Standard filters or pre-filters:** trap the largest particles (dust or other impurities). The filters can be regenerated.
- **Active charcoal filter:** specially developed to neutralise odour generating particles (tobacco, kitchen odours, etc.).
- **Electrostatic filter:** this filter absorbs particles such as dust, pollen, mites, bacteria, smoke and tobacco, thus ensuring air quality above reproach.



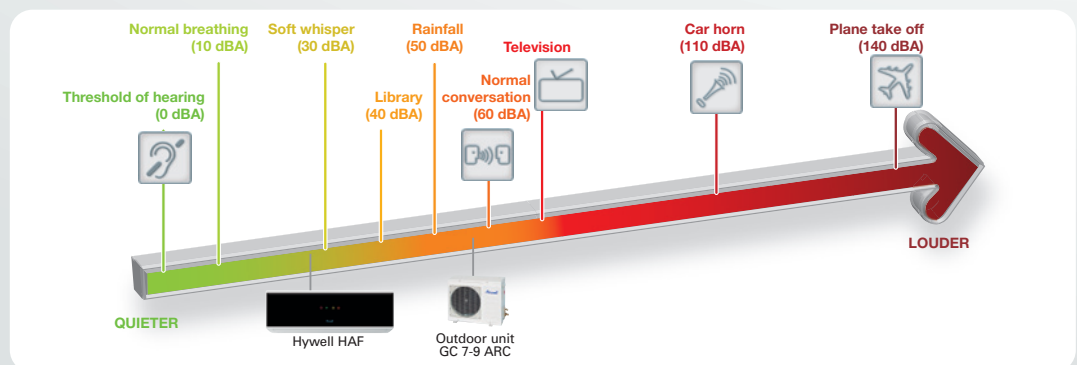
MOTORISED FLAP

Automatic swing of supply air in vertical direction. The flap moves automatically in upward and downward direction to spread the conditioned air evenly throughout the room.

CROSS FLOW FAN

Cross flow fans employ a specifically designed blade to create parallel air movement that reaches even distant objects in a wide, uniform pattern. These fans provide right-angle air-flow and rectangular shape, allowing for installation in corners and space savings in applications such as circuit board cooling and air curtains. In addition, with its adjustable fan speed controller, it allows to have a control of performance and silence.

DECIBEL LEVEL OF DAILY NOISES



INFRARED REMOTE CONTROL

Small-size and with excellent ergonomic properties, the Airwell infrared remote control is highly user friendly. It can be used to program advanced multiple functions such as choosing between 3 ventilation speeds, night-time slow running, programming, dehumidification, energy saving function and "I feel" function, and many others. By only pressing a button you can select the temperature to be obtained and controlled with a high degree of precision.

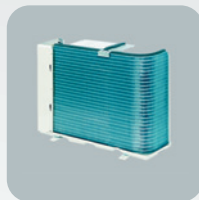
# HAF HIWELL

WALL MOUNTED RANGE

## OUTDOOR UNITS



The HIWELL HAF units are combined with high performance Airwell outdoor units. The heat-stable polyester material structure provides a reduction of the noise level and weight as well as an extended service life. The anticorrosion treatment with a high density powder paint coating ensures high resistance whatever the operating conditions.



### Condenser

"Bluefin" hydrophilic treatment promotes the flow of condensates, while also providing corrosion protection to maintain performance levels and increasing the service life.



### Propeller

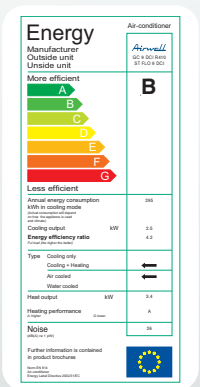
With 3 aerodynamic blades, the propeller offers better balance, enhances the exchange process and makes silent operation possible.



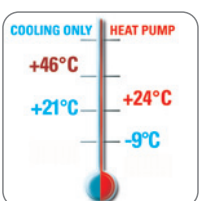
### Compressor

A rotary compressor providing optimum performance and noise levels.

## ENERGY LABEL



The energy label classifies appliances in 7 categories from A (best energy efficiency) to G (lowest energy efficiency) in relation to their energy consumption and includes information such as Brand, Model, Cooling and Heating capacity, Noise level. The Hiwell HAF are labeled as a class B in cooling model for all models, and B/C in heating mode (depending on models) for your best comfort.



## LARGE OPERATING RANGE

The HIWELL HAF range offers an important operating range from 21°C to 46°C outdoor temperature for cooling operations to -9°C to 24°C for heating operations.



# HAF HIWELL

WALL MOUNTED RANGE

## DESIGN AND PERFORMANCE AT THEIR HEIGHT



With its modern and smart features, the new range of HIWELL HAF is the ideal solution for trendy for residential and light commercial applications. The range offers a very high comfort level thanks to a uniform treated air distribution, optimal filtration quality and particularly low noise levels. Technology in harmony with environment perfectly characterise this range allying innovation with an eco-friendly fluid (R410A) ensuring a pleasant air conditioned setting. With its luxurious, black panel hiding a LED display, this range is designed to be mounted on walls and to easily blend in any interior décor.

## PRODUCT BENEFITS

- Unique and elegant design with a translucent display panel.
- Background display on the front panel (LED).
- High efficiency filtration.
- Infrared remote control with LED display.
- Self diagnostic LED lighting for ease of maintenance (filter cleaning indication)
- Indoor large diameter cross flow fan, allowing low operation sound level.
- Motorized flaps.
- Bended indoor coil with treated aluminum fins and coating for improved efficiency.
- Cooling operation at outdoor temperature down to 10°C, and heating operation at outdoor temperature down to -10°C.
- Easy access to the interconnecting tubing and wiring connections.
- Refrigerant pipes can be connected to the indoor unit from 5 different optional directions.
- Compatible with Airconet regulation.
- Supplied with RC4 remote control.
- Possibility to match with a cooled water unit GCAO.
- Wall mounted RCW2 remote control (Optional)

## DISPLAYING YOUR COMFORT



When switching on the air conditioner, a LED (liquid crystal displays) hidden behind the black panel, lights on and displays for user guidance and indication of the operating status (timer, filter, fan speed...).



### R-410A: AN ECO-FRIENDLY FLUID

The HAF HIWELL wall mounted range is available with the ecologically friendly refrigerant R410A. This refrigerant provides high energy efficiency, while preserving the ozone layer, and is easily recyclable. Its high density and high energy efficiency make for high performance coefficients, thereby providing significant energy saving.





### AIRCONET CONTROL SYSTEM

This system provides a communication gateway for connecting several HAF indoor units (optional). A simple Internet navigator enable to achieve centralized and remote management of all indoor units, room by room and floor by floor. The No special software installation is required and users are kept informed of any system incident in real time by e-mail or SMS.

# HAF HIWELL

## WALL MOUNTED RANGE

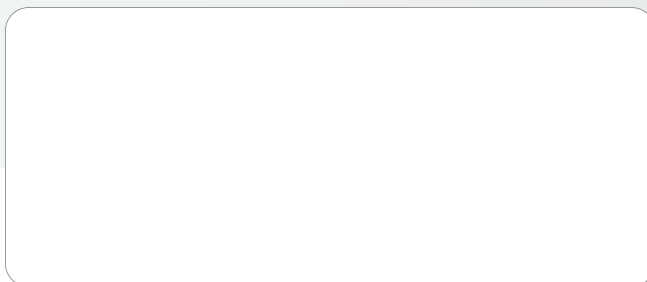
		<b>HAF 007</b>	<b>HAF 009</b>	<b>HAF 012</b>
	<b>Indoor Units</b>	<b>HAF 007</b>	<b>HAF 009</b>	<b>HAF 012</b>
	<b>Outdoor Units</b>	<b>GC 7 ARC</b>	<b>GCN 9 ARC</b>	<b>GCN 12 ARC</b>
<b>Cooling</b>	<b>Capacity</b>	<b>2,05</b>	<b>2,62</b>	<b>3,50</b>
	Power input	0,66	0,82	1,14
	EER/Energy Label	3,01 / B	3,18 / B	3,07 / B
	Operating limits	21°/46° Dry Bulb	21°/46° Dry Bulb	21°/46° Dry Bulb
<b>Heating</b>	<b>Capacity</b>	<b>2,12</b>	<b>2,83</b>	<b>3,78</b>
	Power input	0,62	0,85	1,13
	COP/Energy Label	3,4 / B	3,32 / C	3,35 / C
	Operating limits	-9°/24° Dry Bulb	-9°/24° Dry Bulb	-9°/24° Dry Bulb
<b>Indoor unit</b>	Sound pressure level 1 mt <sup>1</sup>	30/34/38	31/37/43	33/38/42
	Sound power level	52	56	56
	Airflow (CO/HP)	108/108	125/125	172/172
	Dehumidification	0,8	1,2	1,5
	Dimensions (WxDxH)	680x188x250	680x188x250	840x188x250
	Weight	7	7	8
<b>Outdoor unit</b>	Sound pressure level 1 mt	53	51	54
	Sound power level	62	61	65
	Airflow	1200	1370	1450
	Compressor type	Rotary	Rotary	Rotary
	Dimensions (WxDxH)	610x240x250	830x245x545	830x245x545
	Weight	27,5	33,5	38
<b>Power supply 1-230V - 50Hz</b>	Power supply side	Indoor	Indoor	Indoor
	Power cable section	3x1,5	3x1,5	3x1,5
	Fuse rating	10	10	10
	 Electrical connections	4x1,5	4x1,5	4x1,5
	 Electrical connections	5x1,5	5x1,5	5x1,5
	Suction pipe diameter	3/8"	3/8"	3/8"
<b>Pipe line</b>	Liquid pipe diameter	1/4"	1/4"	1/4"
	Max lenght	10	15	15
	Max height	7	7	7

<sup>1</sup>Data are relative to Low speed, Medium speed and High speed

CM HAF-1 - A.1 MASTER - Specifications subject to change without notice. Non contractual pictures.

# Airwell

Your official dealer



### Airwell Group

1, Bis Avenue du 8 mai 1945  
 Saint Quentin en Yvelines  
 78284 GUYANCOURT  
 France  
 Tel. +33 (0)1 39 44 78 00  
 Fax +33 (0)1 39 44 65 17

www.airwell.com  
 contact@airwell-group.com

