

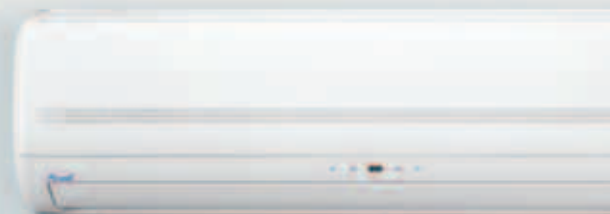
DAKOTA WDI

WALL MOUNTED & MULTISPLITS

DC INVERTER



Airwell



TECHNOLOGY

Energy	
Manufacturer	Airwell
Outside unit	SC1103R100A
Indoor unit	SD1003R100A
More efficient	
Class: A	
Less efficient	
Annual energy consumption kWh in cooling mode	1.50
Cooling output	5.50
Energy efficiency ratio	3.67
Type	Cooling only Cooling + heating Air cooled Water cooled
Heat output	5.5
Heating performance	3.41
Noise	36
Further information is contained in product brochures	

FLEXIBILITY AND COMFORT OF USE, SET TEMPERATURE QUICKLY REACHED, SILENT OPERATION, AMBIENT TEMPERATURE OPTIMALLY MAINTAINED AND ENERGY SAVINGS MAKE DAKOTA DCI AN EXCEPTIONAL RANGE.

Never has technology gone so far to provide optimum user comfort. Technology and innovation have never been so far in optimising comfort to users. The DAKOTA DC INVERTER combines a modern look thanks to its flat front panel and streamlined design and HIGH-TECH technology. Its innovative design, rare sobriety and elegance allow these wall-mounted units to fit into any kind of decoration. The last DC INVERTER technology combined with the use of the R410A green fluid allow for optimum operation (energy efficiency class A) and exceptional performance. (Heat mode operation down to -15°C).

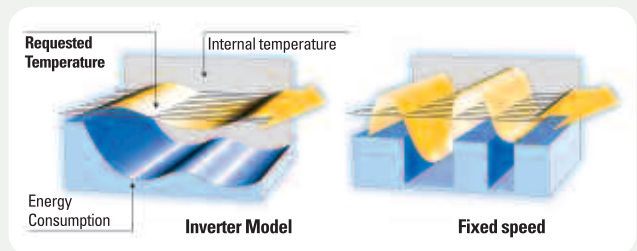


The **Dakota WDI** wall-mounted split unit range is available with the ecologically friendly fluid **R410A**. This provides high energy efficiency, while preserving the ozone layer, and is easily recyclable. Its high density and high energy efficiency make for high performance coefficients, thereby providing significant energy savings.



THE INVERTER TECHNOLOGY COMPRISES:

- A DC INVERTER type variablepower compressor that provides better regulation and temperature control.
- 30% energy saving.
- Ultra silent operation.



RC7 INFRARED REMOTE CONTROL

With its compact size and carefully designed ergonomics, the Airwell infrared remote control offers excellent user comfort. It allows the user to programme numerous sophisticated functions such as: selection of 3 different fan/ventilation speeds, flap sweep function, night time slow running, timer settings, energy savings function, "I feel" function... By simply pressing a single key, the desired temperature can be very accurately obtained and controlled.

DAKOTA WDI

Wall mounted & Multisplits

PRODUCT BENEFITS

• Flat front panel • Flexibility and comfort of use • Extended operating range • Optimal efficiency : Class A Energy label • Reduced noise levels • High performance filtration • Electronic regulation and programming • Automatic treated air sweeping • Optimum temperature regulation • Heating mode operation down to outdoor temperatures of -15°C.

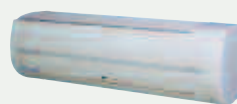
CONFIGURATIONS MONOSPLITS

INDOOR UNITS

WDI 7/9 DCI



WDI 12/18 DCI

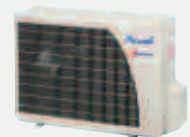


OUTDOOR UNITS

GC 7/9/12 DCI



GC NG 18 DCI



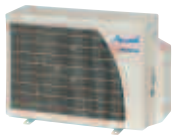
PRODUCT BENEFITS

• DUO 38 DCI – Configurations 7-7 / 7-9 / 7-12 / 9-9 & 9-12 • TRIO 52 DCI - Configurations 7-7-7 / 7-7-9 / 7-7-12 / 7-9-9 / 7-9-12 / 9-9-9 / 9-9-12

Outdoor units compatible with DAKOTA DC Inverter indoor units • R410A "green" fluid. DC Inverter Scroll compressor (TRIO 52 DCI) • Compact outdoor units. Class A energy label. Heating mode operation down to outdoor temperatures of -15° C • Set temperature point reached rapidly • Silent running.

BI-SPLIT CONFIGURATIONS

DUO 38 DCI



EXAMPLES OF POSSIBLE CONFIGURATIONS

7/7



9/9

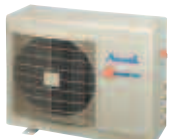


9/12



TRI-SPLIT CONFIGURATIONS

TRIO 52 DCI



EXAMPLES OF POSSIBLE CONFIGURATIONS

7/7/7



7/7/9



7/7/12



7/9/12



9/9/9



9/9/12



DAKOTA WDI

Wall mounted & Multisplits **DC INVERTER**

		WDI 7	WDI 9	WDI 12	WDI 18	DUO 38 DCI	TRIO 52 DCI
	Indoor Units	ST WDI 7	ST WDI 9	ST WDI 12	ST WDI 18		
	Outdoor Units	GC 7 DCI	GC 9 DCI	GC 12 DCI	GC 18 DCI	DUO 38 DCI	DUO 52 DCI
Cooling	Capacity	kW 2,2 (1,3-2,6)	2,5 (1,3-3)	3,5 (1,3-4,1)	5,0 (1,4-5,5)	3,9 (1,5-5,5)	5,2 (1,0-6,5)
	Input power	kW 0,66	0,75	1,03	1,56	1,11	1,55
	EER/Energy label	3,33 / A	3,33 / A	3,39 / A	3,20 / B	3,5 / A	3,35 / A
	Temperature operating limits	°C 10° / 46° Dry bulb	10° / 46° Dry bulb	10° / 46° Dry bulb	10° / 46° Dry bulb	-10° / 46° Dry bulb	-10° / 46° Dry bulb
Heating	Capacity	kW 2,5 (1,3-3,1)	2,8 (1,4-3,5)	3,6 (1,6-4,1)	5,3 (1,6-5,9)	4,5 (1,2-6,2)	6,6 (1,0-7,3)
	Input power	kW 0,73	0,82	1,05	1,55	1,24	1,8
	COP/Energy label	3,42 / B	3,41 / B	3,42 / B	3,41 / B	3,62 / A	3,67 / A
	Temperature operating limits	°C -15° / 24° Dry bulb					
Indoor Units	Sound pressure level to 1 m	dB(A) 30/33/36	32/35/39	29/33/39	34/41/44	-	-
	Sound power level ¹	dB(A) 49/46/43	42/48/52	42/46/52	47/54/56	-	-
	Airflow ¹	m ³ /h 300/350/400	270/350/420	350/450/550	480/620/720	-	-
	Deshumidification	l/h 1	1	1,5	2	-	-
	Dimensions (LxPxH)	mm 680x185x250	680x185x250	840x185x250	900x205x295	-	-
	Weight	kg 7	7	8	11	-	-
Outdoor Units	Sound pressure level to 1 m	dB(A) 54	54	55	53	53	56
	Sound power level	dB(A) 64	64	65	63	63	67
	Airflow	m ³ /h 1400	1390	1390	2160	2160	2860
	Compressor type	Rotary DC Inverter	Rotary DC Inverter	Rotary DC Inverter	Scroll	Rotary DC Inverter	Scroll DC Inverter
	Dimensions (LxPxH)	mm 760x245x545	760x245x545	760x245x545	795x290x610	795x290x610	846x302x690
	Weight	kg 35	36	37	38	38	48
Power Supply 1-230V - 50Hz	Power supply side	Indoor	Indoor	Indoor	Indoor	Outdoor	Outdoor
	Power cable section	mm ² 3x1,5	3x1,5	3x1,5	3x1,5	3x2,5	3x2,5
	Fuse rating am	A 12	12	16	20	16	20
	Electrical connections	mm ² 4x1,5	4x1,5	4x1,5	5x1,5	2 x (4x1,5)	3 x (4x1,5)
	Section pipe diameter	inches 3/8"	3/8"	3/8"	1/2"	2 x 1/4"	3 x 1/4"
Pipe line	Liquid pipe diameter	inches 1/4"	1/4"	1/4"	1/4"	2 x 3/8"	3 x 3/8"
	Max Length	m 15	15	15	15	30	35
	Max Height	m 10	10	10	10	25	25
	Max Height between Outdoor U.	m -	-	-	-	10	15
	Max Height between Indoor U.	m -	-	-	-	5	5

¹ Nominal heating capacity: International conditions 20°C/12°C wet bulb - Outside air temperature: 7°C/6°C wet bulb.
² Nominal cooling capacity: International conditions(NF EN 255.2 / 814.2 standards) - 27°C/19°C wet bulb - Outside air temperature: 35°C/24°C wet bulb.
³ Global acoustic pressure in dB(A) (1 m) at nominal conditions: outdoor unit in an open area against a reflective background - indoor unit : installation in an average sized room, (PV-0.5s reverberation).

Airwell

Your approved Airwell distributor

Airwell France SAS

1bis, Avenue du 8 mai 1945
 Saint Quentin en Yvelines
 78284 GUYANCOURT
 France
 Tel. +33 (0) 139 44 78 00
 Fax +33 (0) 139 44 00 12
 www.airwell.com
 contact@airwell.com

