



WALL MOUNTED **RANGE**

PHOENIX & FLORIDA DCI

DC INVERTER



Airwell

PHOENIX & FLORIDA DCI

Wall mounted DC INVERTER

Never has technology gone so far to provide optimum user comfort. The PHOENIX & FLORIDA DCI combine aesthetics, refined lines and advanced technology.

An innovative design, with a rare degree of discretion and elegance mean that these wall mounted units can satisfy the latest expectations in terms of living habitats. The latest DC INVERTER technology, in combination with the use of the eco-friendly fluid R410A (that preserves the environment) make for optimum efficiency (class A energy label) and exceptional performance levels. (Operates in hot mode down to -15 °C). Its flexibility, user friendliness, ability to retain a constant temperature, broad operating range and extremely silent running make it an exceptional device. For perfect air treatment quality, the PHOENIX & FLORIDA DCI are equipped as standard with an ioniser to provide a negative ion balance in the air.

> The filters



In addition to automatic air sweeping that adopts the best blowing angle for the mode selected, this range has an exceptional air treatment quality (ensured by 3 filtration levels) to provide optimum comfort to the occupants.

- Standard filters or pre-filters:** eliminate the largest particles (dust or other impurities). They are regenerative (wash with soapy water), and an indicator light shows the cleaning times.
- Activated carbon filter:** specially designed to neutralise odour-bearing particles (tobacco, kitchen smells, animal smells, etc.), this photo-catalytic type filter needs to be placed in the light every 6 months to restore its optimum efficiency.
- Active electrostatic filter (ESF):** Electrically charged particles are attracted by a series of polarised plates that trap and collect dust, pollen, mites, bacteria, tobacco smoke. Its full efficiency is restored simply by washing in water.

▼ Standard filter



▼ Activated carbon filter



▼ Active electrostatic filter



> Ioniser

The air we breathe is electrically charged, positively and negatively. In closed and urban environments, the concentration of negative ions in the atmosphere is lower. The AIRWELL ioniser restores the negative ion balance in our environment, to provide an exceptional level of habitat comfort.

- Average negative ions in our environment (quantity per cubic centimetre):**

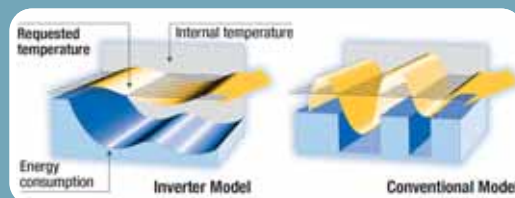
| | |
|------------------------------|-----------|
| Seaside | 10 000 cc |
| Mountains | 5 000 cc |
| City | 1 000 cc |
| City centre office (average) | 50 cc |



- The AIRWELL ion generator installed on the device generates a quantity of ions of between 30,000 and 50,000 per cubic centimetre.**

> The Inverter technology comprises:

- A DC INVERTER type variable power compressor that provides better regulation and temperature control.**
- 30% energy saving.**
- ultra silent operation.**



> Airconet control system



By using a communication gateway for connecting several PNx & FLO DCI indoor units, and with a simple Internet navigator, it is possible to achieve centralised and remote management of all your indoor units, room by room and floor by floor ...).

In addition to improved occupant comfort (by programming unit start-up prior to the occupant's arrival) and reduced energy bills via closer consumption control as well as simplified management, the AircoNet system requires no special software installation and enables you to be kept informed of any system incident in real time by e-mail or SMS.



The **PHOENIX & FLORIDA DCI** wall-mounted split unit range is available with the ecologically friendly fluid **R410A**.

This provides high energy efficiency, while preserving the ozone layer, and is easily recyclable.

Its high density and high energy efficiency make for high performance coefficients, thereby providing significant energy savings.

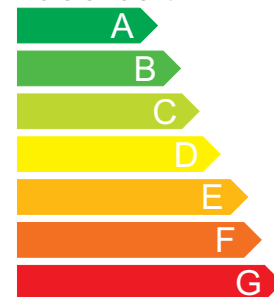
Energy

Manufacturer
Outdoor unit
Indoor unit

Air-conditioner

Airwell
GC 9DCI
ST PNx 9 DCI

More efficient



A

Less efficient

Annual energy consumption
kWh in cooling mode

(Actual consumption will depend on how the appliance is used and climate)

Cooling output kW 2,50

Energy efficiency ratio 4,20
Ful load (the higher the better)

| | | |
|------|-------------------|---|
| Type | Cooling only | |
| | Cooling + Heating | ← |
| | Air cooled | ← |
| | Water cooled | |

Heat output kW

Heating performance

A: higher G: lower

Noise (dB(A) re 1 pW) 26

Further information is contained in product brochures

Norm EN 814
Air-conditioner
Energy Label Directive 2002/31/EC



INDOOR UNITS PHOENIX & FLORIDA DCI



Indoor units PNX 9/12 DCI



FLO 18/21/24 DCI



FLO 30 DCI



EVAPORATOR

The double bend evaporator provides a greater exchange surface area, which increases its effectiveness and efficiency, while also reducing the size.

LCD SCREEN

Simple and user-friendly, this electro-luminescent display lets you view the following simultaneously: the various modes, the temperature setting, the ventilation speed.



TURBINE

The aerodynamically designed tangential turbine, with a diameter greater than the conventional model, enhances the exchange process and reduces the noise level.



DCI OUTDOOR UNITS

The heat-stable polyester material structure provides a reduction in the noise level, weight and a prolonged service life. The anticorrosion treatment with a High density powder paint coating ensures high resistance whatever the operating conditions.



GCNG 12/18 DCI

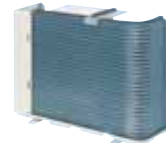


GC 24/30 DCI



COMPRESSOR

A variable power DC INVERTER rotary type, this compressor provides high efficiency and increased acoustic isolation.



CONDENSER

"Bluefin" hydrophilic treatment promotes the flow of condensates, while also providing corrosion protection to maintain performance levels and prolonging the service life.



VENTILATOR MOTOR

A variable power DC INVERTER type, this high efficiency motor provides silent operation.



PROPELLER

With 3 aerodynamic blades, the propeller offers better balance, enhances the exchange process and makes silent operation possible.

Infrared remote control RC4

With its very compact size and carefully designed ergonomics, the Airwell infrared remote control offers excellent user comfort. It allows the user to programme numerous sophisticated functions such as: selection of 3 different fan/ventilation speeds, night time slow running, timer settings, dehumidification, energy savings function, "I feel" function...

By simply pressing a single key, the desired temperature can be very accurately obtained and controlled.

"I feel" sensor

On/Off

Operating mode selector

Room temperature control

Auto sweep

Sleep function

3 fixed FAN speeds
+ one automatic speed

"I feel" Function

Temperature control

Timer selection

Setting of
Start-Stop times

Child safety device

Confirmation of programmed setting

Cancellation of timer parameters



PNX & FLO DCI



Wall mounted DC INVERTER

PNX & FLO DC INVERTER Series

| | PNX 9 DC INV | PNX 12 DC INV | FLO 18 DC INV | FLO 21 DC INV | FLO 24 DC INV | FLO 30 DC INV |
|--------------------------------------|-----------------------|---------------|---------------|---------------|----------------|---------------|
| Cooling capacity | kW 2,5 (1,4-3,6) | 3,5 (1,4-4,3) | 5 (1,5-6) | 6 (1,5-6,7) | 6,8 (1,5-7,5) | 7,8 (1,5-8,8) |
| Power Input | kW 0,59 | 0,99 | 1,46 | 1,99 | 2,25 | 2,59 |
| EER/ Energy Label | 4,2 / A | 3,5 / A | 3,4 / A | 3,01 / B | 3,0 / B | 3,0 / B |
| Operating limits outdoor temperature | °C -10°/ 46° Dry Bulb | | | | | |
| Heating Capacity | kW 3,4 (1,5-5) | 4,3 (1,5-5,8) | 6 (1,5-7,6) | 6,5 (1,8-7,9) | 7,05 (1,5-8,8) | 8,5 (1,5-9,5) |
| Heating Capacity at -10°C out. | kW 2,0 | 2,6 | 2,3 | - | - | - |
| Power Input | kW 0,81 | 1,12 | 1,66 | 1,90 | 2,19 | 2,65 |
| COP / Label Energy | 4,2 / A | 3,8 / A | 3,6 / A | 3,42 / B | 3,21 / C | 3,2 / C |
| Operating limits outdoor temperature | °C -15°/ 24° Dry Bulb | | | | | |

| Indoor units | ST PNX 9 DCI | ST PNX 12 DCI | ST FLO 18 DCI | ST FLO 21 DCI | ST FLO 24 DCI | ST FLO 30 DCI |
|---------------------------------|------------------|---------------|---------------|---------------|---------------|---------------|
| Airflow (LS/HS) | m³/h 350/460/570 | 370/480/580 | 620/760/850 | 620/760/900 | 700/850/1000 | 950/1100/1350 |
| Acoustic pressure to 1m (LS/HS) | dB(A) 26/39 | 26/39 | 34/43 | 34/45 | 38/47 | 44/51 |
| Dehumidification | l/h 1 | 1,5 | 2 | 2 | 2,5 | 3 |
| Weight | kg 10,5 | 11,5 | 15 | 15 | 15 | 18,5 |
| Dimensions (WxDxH) | mm 810x190x285 | 810x190x285 | 1060x210x295 | 1060x210x295 | 1060x210x295 | 1200x236x340 |

| Outdoor units | GC 9 DCI | GC 12 DCI | GC 18 DCI | GC 21 DCI | GC 24 DCI | GC 30 DCI |
|---------------------------------|--------------------|--------------------|--------------------|--------------------|---------------------|---------------------|
| Air flow | m³/h 1780 | 1780 | 2160 | 2860 | 3600 | 3600 |
| Acoustic pressure to 1m (LS/HS) | dB(A) 51 | 52 | 53 | 55 | 56 | 56 |
| Compressor type | Rotary DC Inverter | Rotary DC Inverter | Scroll DC Inverter | Scroll DC Inverter | Twin Rotary DC Inv. | Twin Rotary DC Inv. |
| Weight | kg 38 | 38 | 39 | 46 | 64,5 | 66 |
| Dimensions (WxDxH) | mm 795x290x610 | 795x290x610 | 795x290x610 | 846x302x690 | 950x412x835 | 950x412x835 |

| Linking specifications between units | | | | | | |
|--------------------------------------|--------|--------|--------|--------|--------|---------|
| Power supply | | | | | | |
| Power supply side | | Indoor | Indoor | Indoor | Indoor | Outdoor |
| Power cable section | mm² | 3x1,5 | 3x1,5 | 3x2,5 | 3x2,5 | 3x2,5 |
| Fuse rating am | A | 16 | 16 | 20 | 20 | 20 |
| Electrical connections Ind./Out. | mm² | 4x1,5 | 4x1,5 | 4x2,5 | 4x2,5 | 4x2,5 |
| Linking pipes | | | | | | |
| Max. length | m | 20 | 20 | 30 | 30 | 30 |
| Max. height | m | 10 | 10 | 10 | 10 | 15 |
| Suction pipe diameter | Inches | 3/8" | 3/8" | 1/2" | 1/2" | 5/8" |
| Liquid pipe diameter | Inches | 1/4" | 1/4" | 1/4" | 1/4" | 3/8" |

(1) Nominal heating capacity: International conditions 20°C/12°C wet bulb – Outside air temperature: 7°C/6°C wet bulb. (2) Nominal cooling capacity: International conditions (NF EN 255.2 / 814.2 standards) - 27°C/19°C wet bulb – Outside air temperature: 35°C/24°C wet bulb. (3) Global acoustic pressure in dB(A) (1 m) at nominal conditions: outdoor unit in an open area against a reflective background – indoor unit : installation in an average sized room, (PV-0.5s reverberation)

Airwell



ACE MARKETING SAS - I bis, av. du 8 mai 1945 - Saint-Quentin-en-Yvelines
 F - 78284 Guyancourt Cedex
 Fax : +33 (0) 1 39 44 65 17 - Tél. : +33 (0) 1 39 44 78 00 - e-mail : contact@airwell.com
www.airwell.com

Your approved *Airwell* distributor