



Heat pumps
Three services

HOME+ INDOOR MONOBLOC HEAT PUMP



Ballon ECS inclus

Airwell

A⁺⁺



THE + «SUSTAINABLE DEVELOPMENT»

→ High energy class A⁺⁺

THE + «USER»

- No outdoor unit!
- Compatible with all emitters
- Great flexibility of use
- Perfect for replacing an oil or gas burner
- Integrated hot water tank

THE + «INSTALLER»

- Output maintained even in cold weather
- Indoor monobloc which is easy to maintain

THE + «TECHNOLOGY»

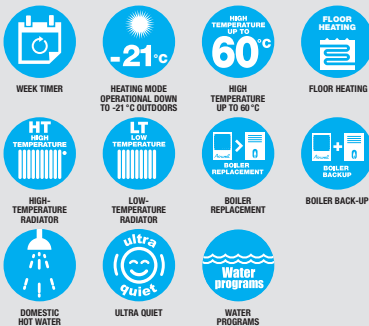
- Operates at outdoor temperatures down to -20°C
- No outdoor unit

**Maintain power
Even with cold weather !**

+ PRODUCTS

- No outdoor unit
- No handling of refrigerant
- Hot water tank included (200L)
- Aluminium finish

FEATURES



Airwell
Just feel well



HOME+ TECHNICAL DATA

Model			AW-HOME+ -4 kW-H11	AW-HOME+ -6 kW-H11	AW-HOME+ -9 kW-H11
Part number			7HP061045	7HP061046	7HP061047
Phase			Single phase	Single phase	Single phase
HEATING MODE					
Air +7°C Water 30/35°C	Heating capacity	kW	4.20	6.15	9.54
	Power input	kW	1.00	1.41	2.16
	COP		4.20	4.35	4.41
Air +7°C Water 40/45°C	Heating capacity	kW	4.06	5.94	9.28
	Power input	kW	1.29	1.86	2.90
	COP		3.15	3.20	3.19
Air +7°C Water 47/55°C	Heating capacity	kW	3.95	5.77	8.65
	Power input	kW	1.60	2.35	3.50
	COP		2.47	2.46	2.47
Air -7°C Water 30/35°C	Heating capacity	kW	4.08	5.95	9.35
	Power input	kW	1.30	1.89	2.70
	COP		3.14	3.15	3.46
COOLING MODE					
Air +7°C Water indoor/outdoor 12/7°C	Cooling capacity	kW	3.10	4.60	6.90
	Power input	kW	1.01	1.50	2.25
	EER		3.06	3.07	3.06
Air +7°C Water indoor/outdoor 23/18°C	Cooling capacity	kW	5.40	8.10	12.15
	Power input	kW	1.03	1.45	2.17
	EER		5.26	5.60	5.59
PERFORMANCE					
Energy label	Water outlet to 35°C	ηs/class	144/A++	146/A++	149/A++
	Water outlet to 55°C	ηs/class	112/A+	113/A+	115/A+
SCOP (average climate)	Water outlet to 35°C		3.76	3.80	3.85
	Water outlet to 55°C		2.20	2.21	2.23
SEER (average climate)	Water outlet to 7°C		3.55	3.60	3.55
	Water outlet to 18°C		5.80	5.90	5.95
Operating limits	Cooling	°C	20/35	20/35	20/35
	Heating	°C	-21/20	-21/20	-21/20
	DHW	°C	-21/35	-21/35	-21/35
Temperature range of water	Cooling	°C	7/25	7/25	7/25
	Heating	°C	20/60	20/60	20/60
	DHW	°C	30/55 (-21)	30/55 (-21)	30/55 (-21)
Sound power (Indoor/Outdoor)		dB(A)	59/67.5	57.1/65.8	57.5/66.0
POWER SUPPLY					
Electric backup heater (as standard)		kW	3.00	3.00	3.00
Phase/Voltage/Frequency			1P/230V/50Hz	1P/230V/50Hz	1P/230V/50Hz
Fuse rating (included)		A	16	16	16
INSTALLATION & OTHERS					
Airflow		m³/h	1500	2400	3500
Refrigerant	Type/GWP		R410A/2088		
Dimensions	Heat pump (WxDxH)	mm	603x645x2300	760x695x2300	904x690x1580
	DHW tank (Ø x H)	mm	integrated	integrated	620x1100
Packaging dimensions (WxDxH)	Heat pump	mm	1000x850x1800	1000x850x1800	1000x850x1720
	Grid + plenum	mm	integrated	integrated	1200x1000x650
	DHW tank	mm	1200x800x1250	1200x800x1250	1200x800x1250
Net weight/Packing weight	Heat pump + grid + plenum	kg	180/195	220/235	280/295 (heat pump) 45/60 (grid + plenum)
	Tank	kg	60/75	70/85	70/85

Airwell

Just feel well

ALL HEAT PUMPS ACCESSORIES

PART NUMBER	NAME	FUNCTION
(included)	Y-shape filter ⓘ	Protect the heat pump from sludging and preserve optimum thermal exchange.
7ACFH0663	Buffer tank 140 L	It protects the heat pump against short cycles that can reduce the useful life of the compressors and improves operation during defrosting phases.
 7ACFH0666	Settling filter (pot) ⓘ	Protect the heat pump from sludging and preserve optimum thermal exchange.
 7ACTL0510	Floor support rubber recycled (pair) ⓘ Length: 1 000 mm	Necessary for a professional installation.

ⓘ Mandatory accessory.

HOME+ ACCESSORY

PART NUMBER	NAME	FONCTION
7ACEL17682	Thermostat filaire bus	Programmable thermostat Carel / reversible.