

# Airwell

■ *Just feel well*

YBZE [ **ECODESIGN** ]

Residential multi  
Duo/Trio/Quattro

2014 [ **EC COMPLY** ]



For YBZE2-18



COMPATIBLE WITH

HZDE



HZDD



[ **EC COMPLY** ] Comply with ECO Design regulation

# Airwell Residential

AIRWELL ■ ELECTRA ■ JOHNSON

## YBZE

### Residential multi Duo/Trio/Quattro

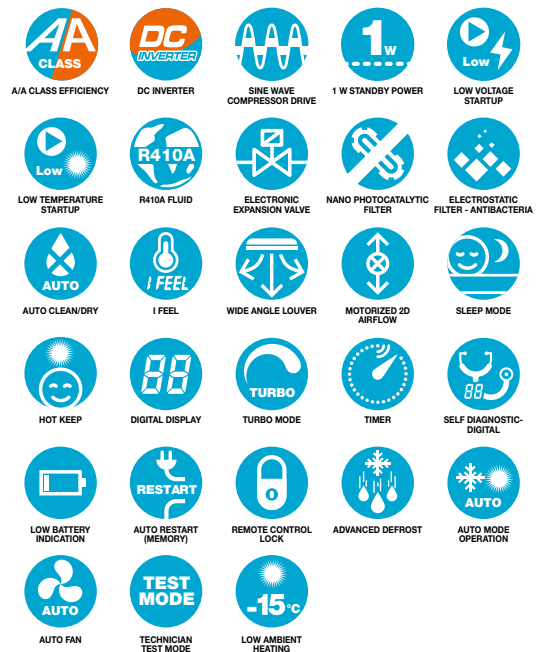
2014 [ EC COMPLY ]

#### FUNCTIONS

- > Capacity range available in 3 capacities from 5 up to 8 kW.
- > DC Inverter and sine wave compressor drive technology.
- > Apply with high wall line.

#### PRODUCT ADVANTAGES

- > A/A Class Efficiency. Minimum energy consumption.
- > Rapid operation in cooling and heating mode.
- > Advance logic for precise temperature control.



## YBZE2-18

### Residential multi Duo

[ CAPACITY COMBINATION ]



COMPATIBLE WITH

HIGH WALL HZDE



Indoor units combinations	COOLING											HEATING										
	Capacity (kW)				Power input (kW)			SEER	Capacity (kW)				Power input (kW)			SCOP						
	A	B	C	D	Nominal	Min	Max		Nominal	Min	Max	A	B	C	D		Nominal	Min	Max	Nominal	Min	Max
9	2.60				2.60	1.50	3.50	0.85	0.50	2.00	3.06	3.20				3.20	1.60	4.50	1.10	0.55	2.00	2.91
12	3.50				3.50	2.00	4.40	1.10	0.50	2.00	3.18	3.80				3.80	1.80	4.80	1.15	0.55	2.00	3.30
9+9	2.50	2.50			5.00	2.05	6.20	1.55	0.50	2.55	3.23	2.80	2.80			5.60	2.50	6.65	1.55	0.58	2.70	3.61
9+12	2.14	2.86			5.00	2.15	6.30	1.55	0.50	2.55	3.23	2.40	3.20			5.60	2.50	6.75	1.55	0.58	2.70	3.61
12+12	2.50	2.50			5.00	2.15	6.30	1.55	0.50	2.55	3.23	2.80	2.80			5.60	2.50	6.75	1.55	0.58	2.70	3.61

Based on wall mounted combination

# YBZE3-24

## Residential multi Trio

[ CAPACITY COMBINATION ]



COMPATIBLE WITH



CONSOLE DUAL FLOW HZDD



Indoor units combinations	COOLING											HEATING										
	Capacity (kW)						Power input (kW)			SEER	Capacity (kW)						Power input (kW)			SCOP		
	A	B	C	D	Nominal	Min	Max	Nominal	Min		Max	A	B	C	D	Nominal	Min	Max	Nominal		Min	Max
9	2.60				2.60	2.00	3.90	0.78	0.60	2.10	3.35	3.20				3.20	2.80	4.00	1.05	0.90	2.00	3.05
12	3.50				3.50	2.10	4.00	1.05	0.70	2.15	3.33	3.80				3.80	2.80	5.00	1.20	0.90	2.10	3.17
18	5.30				5.30	2.25	6.30	1.65	0.80	2.20	3.21	5.80				5.80	2.80	6.30	1.80	0.90	2.20	3.22
9+9	2.60	2.60			5.20	2.00	7.80	1.55	0.60	4.20	3.35	3.20	3.20			6.40	3.20	8.50	2.05	0.90	3.95	3.12
9+12	2.61	3.49			6.10	2.10	8.00	2.00	0.70	4.30	3.05	3.09	4.11			7.20	3.50	9.30	2.25	0.90	4.40	3.20
9+18	2.33	4.67			7.00	2.25	9.20	2.18	0.80	4.40	3.21	2.57	5.13			7.70	3.70	9.90	2.40	0.90	4.40	3.21
12+12	3.50	3.50			7.00	2.20	8.20	2.18	0.75	4.30	3.21	3.85	3.85			7.70	3.50	9.50	2.26	0.90	4.40	3.41
12+18	2.80	4.20			7.00	2.30	9.50	2.18	0.80	4.40	3.21	3.12	4.68			7.80	3.80	11.00	2.40	0.90	4.40	3.25
9+9+9	2.37	2.37	2.37		7.10	2.20	10.00	2.20	0.65	4.60	3.23	2.83	2.83	2.83		8.50	3.60	11.00	2.40	0.85	4.00	3.54
9+9+12	2.13	2.13	2.84		7.10	2.20	10.00	2.20	0.65	4.60	3.23	2.57	2.57	3.42		8.55	3.80	11.00	2.40	0.85	4.00	3.56
9+9+18	1.78	1.78	3.55		7.10	2.20	10.00	2.20	0.65	4.65	3.23	2.14	2.14	4.28		8.55	3.80	11.00	2.40	0.85	4.00	3.56
9+12+12	1.94	2.58	2.58		7.10	2.20	10.00	2.20	0.65	4.65	3.23	2.33	3.11	3.11		8.55	3.80	11.00	2.40	0.85	4.00	3.56
9+12+18	1.64	2.18	3.28		7.10	2.20	10.00	2.20	0.65	4.65	3.23	1.97	2.63	3.95		8.55	3.80	11.00	2.40	0.85	4.00	3.56
12+12+12	2.37	2.37	2.37		7.10	2.20	10.00	2.20	0.65	4.65	3.23	2.85	2.85	2.85		8.55	3.80	11.00	2.40	0.85	4.00	3.56
12+12+18	2.03	2.03	3.04		7.10	2.20	10.00	2.20	0.65	4.65	3.23	2.44	2.44	3.66		8.55	3.80	11.00	2.40	0.85	4.00	3.56

Based on wall mounted combination

# YBZE4-30

## Residential multi Quattro

[ CAPACITY COMBINATION ]



COMPATIBLE WITH



CONSOLE DUAL FLOW HZDD



Indoor units combinations	COOLING											HEATING										
	Capacity (kW)						Power input (kW)			SEER	Capacity (kW)						Power input (kW)			SCOP		
	A	B	C	D	Nominal	Min	Max	Nominal	Min		Max	A	B	C	D	Nominal	Min	Max	Nominal		Min	Max
9	2.60				2.60	2.00	3.90	0.78	0.60	2.10	3.35	3.20	0.00			3.20	2.80	4.00	1.05	0.90	2.00	3.05
12	3.50				3.50	2.10	4.00	1.05	0.70	2.15	3.33	3.80	0.00			3.80	2.80	5.00	1.20	0.90	2.10	3.17
18	5.30				5.30	2.25	6.30	1.65	0.80	2.20	3.21	5.80	0.00			5.80	2.80	6.30	1.80	0.90	2.20	3.22
9+9	2.50	2.50			5.00	2.00	7.80	1.55	0.60	4.20	3.23	3.20	3.20			6.40	3.20	8.50	2.05	0.90	3.95	3.12
9+12	2.66	3.54			6.20	2.10	8.00	2.00	0.70	4.30	3.10	3.09	4.11			7.20	3.50	9.30	2.25	0.90	4.40	3.20
9+18	2.33	4.67			7.00	2.25	9.20	2.18	0.80	4.40	3.21	2.57	5.13			7.70	3.70	9.90	2.40	0.90	4.40	3.21
12+12	3.50	3.50			7.00	2.20	8.20	2.18	0.75	4.30	3.21	3.85	3.85			7.70	3.50	9.50	2.26	0.90	4.40	3.41
12+18	2.80	4.20			7.00	2.30	9.50	2.18	0.80	4.40	3.21	3.12	4.68			7.80	3.80	9.90	2.40	0.90	4.40	3.25
9+9+9	2.37	2.37	2.37		7.10	2.20	9.50	2.20	0.65	4.60	3.23	2.83	2.83	2.83		8.50	3.70	9.90	2.40	0.85	4.00	3.54
9+9+12	2.13	2.13	2.84		7.10	2.20	9.50	2.20	0.65	4.60	3.21	2.57	2.57	3.42		8.55	3.80	9.90	2.40	0.85	4.00	3.56
9+9+18	1.78	1.78	3.55		7.10	2.20	9.60	2.20	0.65	4.65	3.23	2.14	2.14	4.28		8.55	3.80	9.90	2.40	0.85	4.00	3.56
9+12+12	1.94	2.58	2.58		7.10	2.20	9.60	2.20	0.65	4.65	3.23	2.33	3.11	3.11		8.55	3.80	9.90	2.40	0.85	4.00	3.56
9+12+18	1.64	2.18	3.28		7.10	2.20	9.60	2.20	0.65	4.65	3.23	1.97	2.63	3.95		8.55	3.80	9.90	2.40	0.85	4.00	3.56
12+12+12	2.37	2.37	2.37		7.10	2.20	9.60	2.20	0.65	4.65	3.23	2.85	2.85	2.85		8.55	3.80	9.90	2.50	0.85	4.00	3.42
12+12+18	2.03	2.03	3.04		7.10	2.20	9.60	2.20	0.65	4.65	3.23	2.44	2.44	3.66		8.55	3.80	9.90	2.50	0.85	4.00	3.42
9+9+9+9	2.00	2.00	2.00	2.00	8.00	2.20	10.00	2.48	0.65	4.65	3.23	2.33	2.33	2.33	2.33	9.30	3.90	11.00	2.55	0.98	4.00	3.65
9+9+9+12	1.85	1.85	1.85	2.46	8.00	2.20	10.00	2.48	0.65	4.65	3.23	2.22	2.22	2.22	2.95	9.60	3.90	11.00	2.55	0.98	4.00	3.76
9+9+12+12	1.71	1.71	2.29	2.29	8.00	2.20	10.00	2.48	0.65	4.50	3.23	2.06	2.06	2.74	2.74	9.60	3.90	11.00	2.55	0.98	4.00	3.76
9+12+12+12	1.60	2.13	2.13	2.13	8.00	2.20	10.00	2.48	0.65	4.50	3.23	1.92	2.56	2.56	2.56	9.60	3.90	11.00	2.55	0.98	4.00	3.76
9+9+12+18	1.50	1.50	2.00	3.00	8.00	2.20	10.00	2.48	0.65	4.50	3.23	1.80	1.80	2.40	3.60	9.60	3.90	11.00	2.55	0.98	4.00	3.76
12+12+12+12	2.00	2.00	2.00	2.00	8.00	2.20	10.00	2.48	0.65	4.50	3.23	2.40	2.40	2.40	2.40	9.60	3.90	11.00	2.55	0.98	4.00	3.76

Based on wall mounted combination

## YBZE

### Residential multi Duo/Trio/Quattro

2014 [ EC COMPLY ]

[ TECHNICAL DATA ]



Outdoor unit		AWAU-YBZE218-H11	AWAU-YBZE324-H11	AWAU-YBZE430-H11	
<b>COOLING</b>					
<b>Rated Capacity</b>	<b>kW</b>	<b>5.0 (2.05-6.2)</b>	<b>7.1 (2.2-10)</b>	<b>8.0 (2.2-10.0)</b>	
<b>Pdesignc</b>	<b>kW</b>	<b>5.0</b>	<b>7.1</b>	<b>8.0</b>	
Input power	kW	1.55	2.25	2.49	
SEER/Energy Label		5.6/A+	5.1/A	5.1/A	
Operating limits	°C	-5°/43° Dry bulb			
<b>HEATING</b>					
<b>Rated Capacity</b>	<b>kW</b>	<b>5.6 (2.5-6.65)</b>	<b>8.5 (3.6-11)</b>	<b>9.3 (2.8-11.0)</b>	
<b>Pdesignh</b>	<b>kW</b>	<b>4.6</b>	<b>7.0</b>	<b>7.0</b>	
Input power	kW	1.55	2.35	2.58	
SCOP/Energy Label		3.8/A	3.8/A	3.8/A	
Operating limits	°C	-15°/24° Dry bulb			
<b>OUTDOOR UNIT</b>					
Sound pressure level to 1 m	dB(A)	53	58	58	
Sound power level	dB(A)	63	68	68	
Airflow	m³/h	3200	4000	4000	
Compressor type		Twin Rotary DC Inverter	Twin Rotary DC Inverter	Twin Rotary DC Inverter	
Outline Dimensions (WxHxD)	mm	963x700x396	1001x790x427	1001x790x427	
Package Dimensions (WxHxD)	mm	1029x750x458	1083x855x488	1083x855x488	
Net Weight/Gross Weight	kg	50/55	64/70	65/71	
<b>Part number</b>		<b>7SP091158</b>	<b>7SP091159</b>	<b>7SP091160</b>	
<b>POWER SUPPLY 1 - 230V - 50 HZ</b>					
Power supply side		Outdoor	Outdoor	Outdoor	
Power cable section	mm²	3x2.5	3x2.5	3x2.5	
Fuse rating am	A	25	32	32	
Electrical connections	mm²	2x (4x1.0)	3x (4x1.0)	4x (4x1.0)	
<b>PIPE LINE</b>					
Suction pipe diameter	inches	2x3/8"	3x3/8"	4x3/8"	
Liquid pipe diameter	inches	2x1/4"	3x1/4"	4x1/4"	
Max length	m	20	70	70	
Max length per circuit	m	10	20	20	
Max height between indoor and outdoor units	m	10	10	10	
Max height between indoor units	m	10	10	10	
<b>Indoor unit - High wall</b>		<b>AWSI-HZDE009-N11</b>	<b>AWSI-HZDE012-N11</b>	<b>AWSI-HZDE018-N11</b>	
<b>Indoor unit - Console</b>					<b>AWSI-HZDD018-N11</b>
<b>Cooling Capacity</b>	<b>kW</b>	<b>2.6</b>	<b>3.5</b>	<b>5.3</b>	<b>5.3</b>
<b>Heating Capacity</b>	<b>kW</b>	<b>2.8</b>	<b>3.8</b>	<b>5.8</b>	<b>5.8</b>
<b>INDOOR UNIT</b>					
Sound pressure level to 1 m (LS/MS/HS/SS)	dB(A)	24/30/38/41	25/31/39/42	32/37/40/45	32/35/41/46
Sound power level (LS/MS/HS/SS)	dB(A)	39/45/53/56	40/46/54/57	47/52/55/60	41/44/51/56
Airflow (LS/MS/HS/SS)	m³/h	280/370/520/600	300/410/560/680	460/560/680/800	300/430/560/650
Dehumidification	l/h	0.8	1.4	1.8	1.8
Outline Dimensions (WxHxD)	mm	770x283x201	770x283x201	865x305x215	700x600x215
Package Dimensions (WxHxD)	mm	855x360x280	855x360x280	948x383x310	788x697x283
Net Weight/Gross Weight	kg	8/10	9/11	12/15	15/18
<b>Part number - High wall</b>		<b>7SP022908</b>	<b>7SP022909</b>	<b>7SP022910</b>	
<b>Part number - Console</b>					<b>7SP022925</b>
<b>PIPE LINE</b>					
Suction pipe diameter	inches	3/8"	3/8"	1/2"	1/2"
Liquid pipe diameter	inches	1/4"	1/4"	1/4"	1/4"