

CAC DCI DC INVERTER

SIMULTANEOUS MONOSPLITS AND MULTISPLITS

3 Heat Pump models
from 8 kW to 14 kW

PRODUCT ADVANTAGES


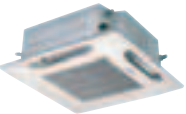


- High performances Twin Rotary DC INVERTER compressor.
- R410A refrigerant.
- Minimum outdoor temperature for heating mode operation -20°C.
- Compact outdoor units.
- Ultra-silent operation.
- Complete range of indoor units.
- Up to 30% less energy consumption as compared classical systems.
- Fast reaching of desired temperature.

OUTDOOR UNIT
OU-PSINV 25-36 HR



OUTDOOR UNIT OU-PSINV 48 HR



		PS-HW 12R	PS-HW 16R	PS-HW 18R	PS-HW 25R		
Hi-Wall Indoor Units 	Sound pressure level to 1 m ¹ dB(A)	27/31/35	27/31/35	30/34/38	34/37/41		
	Airflow ¹ m ³ /h	420/600/720	420/600/720	480/660/780	720/960/1140		
	Dehumidification l/h	1,9	1,9	2,1	4,0		
	Dimensions (WxDxH) mm	995x203x285	995x203x285	995x203x285	1140x228x330		
	Weight kg	12,0	12,0	12,0	21,0		
	Part number		7SP02R354	7SP02R355	7SP02R356	7SP02R357	
Price	€						
Cassettes Indoor Units 		PS-4WK 12R	PS-4WK 16R	PS-4WK 18R	PS-4WK 25R	PS-4WK 36R	PS-4WK 48R
	Sound pressure level to 1 m ¹ dB(A)	27/31	27/31	27/31	28/34	33/39	34/42
	Airflow ¹ m ³ /h	780/840/930	780/840/930	780/840/930	840/960/1200	1260/1380/1680	1320/1500/1980
	Dehumidification l/h	2,2	2,2	2,2	2,8	3,9	4,6
	Dimensions (WxDxH) mm	840x840x256	840x840x256	840x840x256	840x840x256	840x840x319	840x840x319
	Weight kg	21,0	21,0	21,0	22,0	26,0	26,0
	Part number		7SP04R162	7SP04R163	7SP04R164	7SP04R165	7SP04R166
Price	€						
Ceiling Indoor Units 		PS-C 12R	PS-C 16R	PS-C 18R	PS-C 25R	PS-C 36R	PS-C 48R
	Sound pressure level to 1 m ¹ dB(A)	30/35	30/35	30/36	33/38	35/41	37/43
	Airflow ¹ m ³ /h	540/600/720	540/600/720	540/660/780	840/900/1100	1200/1380/1650	1320/1560/1800
	Dehumidification l/h	1,4	1,4	2	3,0	3,9	5,6
	Dimensions (WxDxH) mm	910x680x210	910x680x210	910x680x210	1180x680x210	1595x680x210	1595x680x210
	Weight kg	21,0	21,0	21,0	25,0	33,0	33,0
	Part number		7SP02R358	7SP02R359	7SP02R360	7SP02R361	7SP02R362
Price	€						
Ducted Indoor Units 		PS-D 12R	PS-D 16R	PS-D 18R	PS-D 25R	PS-D 36R	PS-D 48R
	Sound pressure level to 1 m ¹ dB(A)	22/29	25/30	25/30	27/34	31/38	33/40
	Airflow ¹ m ³ /h	420/510/600	540/630/720	540/630/720	780/900/1080	1260/1560/1800	1320/1560/1980
	Dehumidification l/h	1,8	3,0	3	3,5	4,2	6,6
	Dimensions (WxDxH) mm	700X630X310	700x630x310	700x630x310	1000x630x310	1480x630x310	1480x630x310
	Weight kg	24,0	25,0	25,0	32,0	47,0	47,0
	Part number		7SP03R075	7SP03R076	7SP03R077	7SP03R078	7SP03R079
Price	€						

¹Data are relative to Low speed, Medium speed and High speed



CAC DCI

			OU-PSINV 25HR	OU-PSINV 36HR	OU-PSINV 48HR
Cooling	Capacity	HP	3,0	4,0	5,0
	Capacity	kW	7,1	10,0	12,5
	Operating limits	°C	-15°/ 43° Dry Bulb	-15°/ 43° Dry Bulb	-15°/ 43° Dry Bulb
Heating	Capacity	kW	8,0	11,2	14,0
	Operating limits	°C	-15° Wet Bulb	-15° Wet Bulb	-15° Wet Bulb
Outdoor unit	Sound pressure level 1 mt	dB(A)	47	51	52
	Sound pressure level to 1 m in silent mode	dB(A)	45	45	45
	Airflow	m³/h	3000	3300	6000
	Compressor type		Twin rotary DC Inverter	Twin rotary DC Inverter	Twin rotary DC Inverter
	Dimensions (WxDxH)	mm	940x340x780	940x340x780	940x340x1230
	Weight	kg	58	65	100
	Part number		7SP06R646	7SP06R647	7SP06R648
Power supply 1-230V - 50Hz	Price	€			

Accessories	Infrared remote control for all units	Infrared remote control for wall mounted units	Infrared remote control for cassettes	Infrared remote control for ceiling units	Standard wired remote control	Simplified remote control	Weekly remote control
Controller devices	RCIRC-F	RCIRW	RCIRK-FL	RCIRP-FL	NRCG-FL	NRCB-FL	NWTM-FL
Part number	7ACEL1310	7ACEL1312	7ACEL1308	7ACEL1311	7ACEL1307	7ACEL1315	7ACEL1314
Price €							
	System controller	Remote sensor		Intelligent controller	Communication adapter		Standard wired - Timer remote control
	NRSC-FL	NSD-FL		IC-FL	CM-FL		NRCT-FLR
Part number	7ACEL1313	7ACEL1316		7ACEL1319	7ACEL1317		7ACELR001
Price €							
Front panel	GR ST-NK7-60						
Part number	7ACVF0292						
Price €							
Distribution joint	NRF-DL 16	NRF-DL 28					
Part number	7ACFH0405	7ACFH0433					
Price €							

**CAC DCI
DC INVERTER
SIMULTANEOUS
MONOSPLITS AND
MULTISPLITS**

OUTDOOR UNIT
OU-PSINV 25-36 HR



OUTDOOR UNIT **OU-PSINV 48 HR**



MONOSPLIT OR SIMULTANEOUS MULTISPLIT CONFIGURATION RUNNING

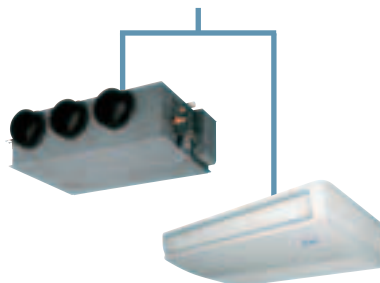
- Ideal system for commercial and retail applications like meeting rooms, conference rooms, restaurants etc.
- Installation of several DCI CAC units in large areas allows to improve the confort by splitting blowing points.

Configurations :

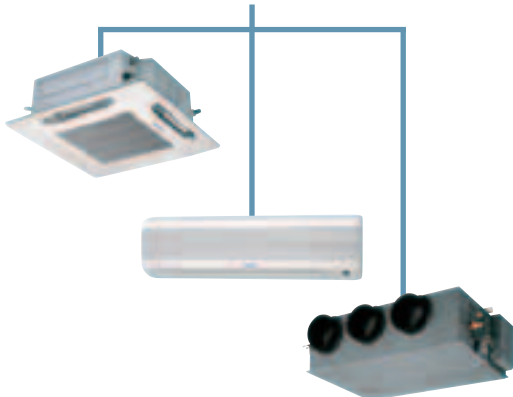
Mono



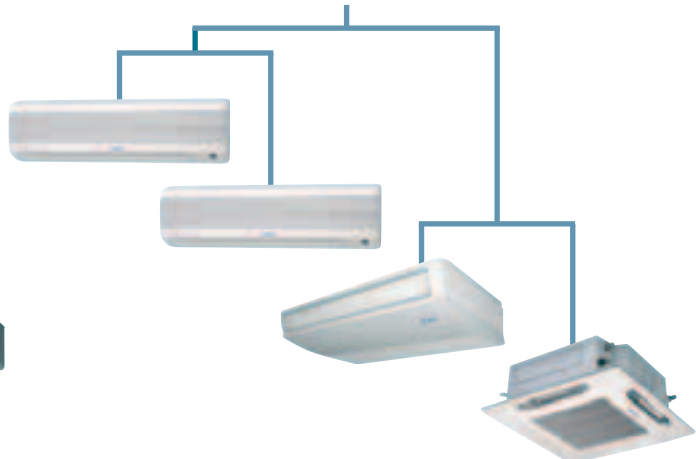
Bi



Triple



Double-Bi



Indoor units			COOLING								HEATING									
Combinations	Type	Models	Capacity (kW)					Power input (kW)	EER/ Energy label	Capacity (kW)					Power input (kW)	COP/ Energy label				
			A	B	C	D	Total			Min	Max	A	B	C			D	Total	Min	Max
OU-PSINV 25H																				
1 unit	High wall unit	PS-HW 25 R				7,1	7,1	2,2	8	2,36	3,00/B				8	8	2,2	9	2,26	3,54/B
	Cassette unit	PS-4WK 25 R				7,1	7,1	2,2	8	2,13	3,33/A				8	8	2,2	9	2,07	3,86/A
	Ceiling unit	PS-C 25 R				7,1	7,1	2,2	8	2,35	3,02/B				8	8	2,2	9	2,25	3,56/B
	Ducted unit	PS-D 25 R				7,1	7,1	2,2	8	2,51	2,82/C				8	8	2,2	9	2,39	3,35/C
2 units at choice	High wall unit	PS-HW 12 R			3,55	3,55	7,1	2,2	8	2,38	2,98/B			4	4	8	2,2	9	2,28	3,51/B
	Cassette unit	PS-4WK 12 R			3,55	3,55	7,1	2,2	8	2,15	3,30/A			4	4	8	2,2	9	2,08	3,85/A
	Ceiling unit	PS-C 12 R			3,55	3,55	7,1	2,2	8	2,37	2,99/B			4	4	8	2,2	9	2,27	3,52/B
	Ducted unit	PS-D 12 R			3,55	3,55	7,1	2,2	8	2,51	2,82/C			4	4	8	2,2	9	2,39	3,35/C
OU-PSINV 36H																				
1 unit	Cassette unit	PS-4WK 36 R				10	10	2,2	11,2	3,12	3,20/A				11,2	11,2	2,2	12,5	2,96	3,78/A
	Ceiling unit	PS-C 36 R				10	10	2,2	11,2	3,29	3,04/B				11,2	11,2	2,2	12,5	3,67	3,05/D
	Ducted unit	PS-D 36 R				10	10	2,2	11,2	3,55	2,81/C				11,2	11,2	2,2	12,5	3,3	3,39/C
2 units at choice	High wall unit	PS-HW 18 R			5	5	10	2,2	11,2	3,29	3,04/B			5,6	5,6	11,2	2,2	12,5	3,05	3,67/A
	Cassette unit	PS-4WK 18 R			5	5	10	2,2	11,2	3,12	3,20/A			5,6	5,6	11,2	2,2	12,5	2,95	3,80/A
	Ceiling unit	PS-C 18 R			5	5	10	2,2	11,2	3,28	3,04/B			5,6	5,6	11,2	2,2	12,5	3,04	3,68/A
	Ducted unit	PS-D 18 R			5	5	10	2,2	11,2	3,42	2,92/C			5,6	5,6	11,2	2,2	12,5	3,16	3,54/B
OU-PSINV 48H																				
1 unité	Cassette unit	PS-4WK 48 R				12,5	12,5	2,7	14	3,86	3,23/A				14	14	2,7	16	3,83	3,66/A
	Ceiling unit	PS-C 48 R				12,5	12,5	2,7	14	4,12	3,03/B				14	14	2,7	16	4,07	3,44/B
	Ducted unit	PS-D 48 R				12,5	12,5	2,7	14	4,36	2,86/C				14	14	2,7	16	4,29	3,26/C
2 units at choice	High wall unit	PS-HW 25 R			6,25	6,25	12,5	2,7	14	4,13	3,02/B			7	7	14	2,7	16	4,08	3,43/B
	Cassette unit	PS-4WK 25 R			6,25	6,25	12,5	2,7	14	3,84	3,25/A			7	7	14	2,7	16	3,8	3,68/A
	Ceiling unit	PS-C 25 R			6,25	6,25	12,5	2,7	14	4,12	3,03/B			7	7	14	2,7	16	4,06	3,45/B
	Ducted unit	PS-D 25 R			6,25	6,25	12,5	2,7	14	4,42	2,82/C			7	7	14	2,7	16	4,35	3,22/C
3 units at choice	High wall unit	PS-HW 16 R		4,16	4,16	4,16	12,5	2,7	14	4,13	3,02/B		4,66	4,66	4,66	14	2,7	16	4,08	3,43/B
	Cassette unit	PS-4WK 16 R		4,16	4,16	4,16	12,5	2,7	14	3,86	3,23/A		4,66	4,66	4,66	14	2,7	16	3,81	3,67/A
	Ceiling unit	PS-C 16 R		4,16	4,16	4,16	12,5	2,7	14	4,12	3,03/B		4,66	4,66	4,66	14	2,7	16	4,06	3,45/B
	Ducted unit	PS-D 16 R		4,16	4,16	4,16	12,5	2,7	14	4,34	2,88/C		4,66	4,66	4,66	14	2,7	16	4,25	3,29/C
4 units at choice	High wall unit	PS-HW 12 R	3,12	3,12	3,12	3,12	12,5	2,7	14	4,16	3,00/B	3,5	3,5	3,5	3,5	14	2,7	16	4,11	3,41/B
	Cassette unit	PS-4WK 12 R	3,12	3,12	3,12	3,12	12,5	2,7	14	3,89	3,21/A	3,5	3,5	3,5	3,5	14	2,7	16	3,83	3,66/A
	Ceiling unit	PS-C 12 R	3,12	3,12	3,12	3,12	12,5	2,7	14	4,15	3,01/B	3,5	3,5	3,5	3,5	14	2,7	16	4,09	3,42/B
	Ducted unit	PS-D 12 R	3,12	3,12	3,12	3,12	12,5	2,7	14	4,43	2,82/C	3,5	3,5	3,5	3,5	14	2,7	16	4,33	3,23/C