

## BS / DLS DC INVERTER

### DUCTED UNITS HEAT PUMP

7 Heat Pump models  
From 4,3 kW to 13,4 kW

INDOOR UNIT **DLS 18-21-24-30-36-43 DCI**



### INDOOR UNITS INSTALLATION



Ducted air distribution  
BS 12 + multi-zone air distribution  
ducts connection



+ air intake ducts  
connection plenum



+ air intake cassette  
plenum under the unit

(Grilles and ducts – on-site supply)

### PRODUCT ADVANTAGES

- Compatible with AIRCONET regulation.
- Designed for integration in suspended ceilings.
- Low noise levels.
- Low built-in height: BS = 245 mm; DLS = 260 mm.
- R410A "green" fluid.
- Optimal efficiency: Class A energy label.
- Heating mode operation down to outdoor temperatures of -15° C.
- Optimal temperature regulation.
- Electronic regulation and programming.
- Fluid pre-charged at the factory for up to 20 m pipe lengths. (depending on models).
- New air intake (BS DCI).
- High efficiency filtration.
- Air distribution / air intake plenums (BS DCI accessory).
- Horizontal or vertical mounted (BS DCI)
- Supplied with RC4 remote control.

\* Wall mounted RCW2 remote control (Optional)

INDOOR UNIT **BS 12 DCI**

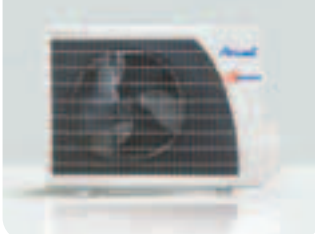


RC4

RCW2\*



OUTDOOR UNIT  
**GC 12-18 DCI**



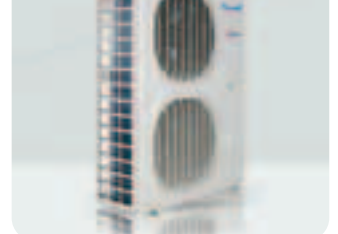
OUTDOOR UNIT  
**GC 21 DCI**



OUTDOOR UNIT  
**GC 24-30 DCI**



OUTDOOR UNIT **GC 36-43 DCI**

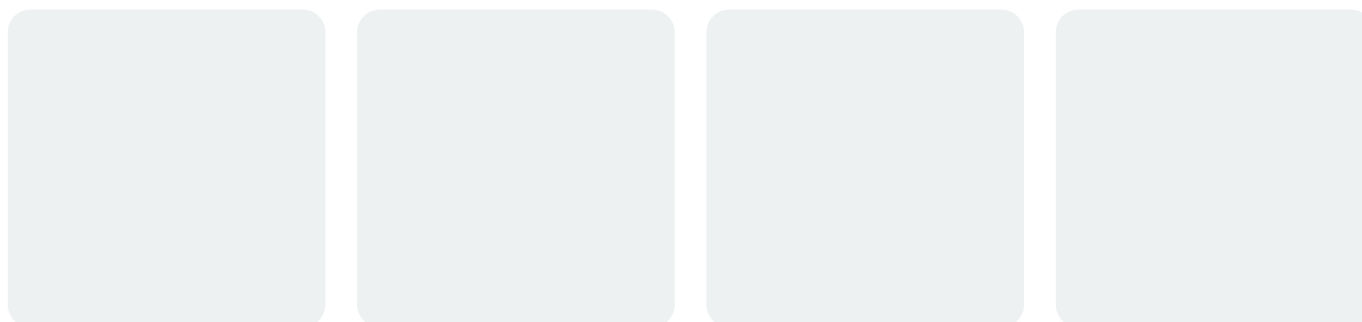




## BS / DLS DCI

		BS 12 DCI	DLS 18 DCI	DLS 21 DCI	DLS 24 DCI	DLS 30 DCI	DLS 36 DCI	DLS 43 DCI
<b>Indoor Units</b>		<b>ST BS 12 DCI</b>	<b>ST DLS 18 DCI</b>	<b>ST DLS 21 DCI</b>	<b>ST DLS 24 DCI</b>	<b>ST DLS 30 DCI</b>	<b>ST DLS 36 DCI</b>	<b>ST DLS 43 DCI</b>
<b>Outdoor Units</b>		<b>GC 12 DCI</b>	<b>GC 18 DCI</b>	<b>GC 21 DCI</b>	<b>GC 24 DCI Z</b>	<b>GC 30 DCI</b>	<b>GC 36 DCI</b>	<b>GC 43 DCI</b>
<b>Cooling</b>	<b>Capacity</b>	<b>3,5 (1,5-4,6)</b>	<b>5 (1,6-6,4)</b>	<b>5,6 (1,6-6,6)</b>	<b>7,1 (1,5-8)</b>	<b>7,5 (1,6-9,0)</b>	<b>10 (3,2-11,5)</b>	<b>12,5 (4,7-14)</b>
	Input power	0,96	1,55	1,86	2,35	2,4	3,12	4,1
	EER/Energy Label	3,7 / A	3,2 / A	3,0 / B	3,0 / B	3,0 / B	3,21 / A	3,0 / B
	Operating limits	-10°/46° Dry Bulb						
<b>Heating</b>	<b>Capacity</b>	<b>4,3 (1,6-5,5)</b>	<b>6,3 (1,4-7,7)</b>	<b>6,6 (1,8-8,0)</b>	<b>7,6 (1,5-8,8)</b>	<b>8,8 (1,8-10,5)</b>	<b>11,2 (2,7-12,5)</b>	<b>14 (4,4-16)</b>
	Capacity at -15°C	2,6	-	-	-	-	-	-
	Input power	1,34	1,6	1,8	2,08	2,44	3,6	4,3
	COP/Energy Label	3,2 / C	3,7 / A	3,7 / A	3,65 / A	3,6 / A	3,1 / D	3,25 / C
Operating limits	-15°/24° Dry Bulb							
<b>Indoor unit</b>	Sound pressure level 1 mt <sup>1</sup>	35/38/42	34/37/42	34/37/43	38/43/47	40/44/48	62/67/71	62/67/71
	Sound power level <sup>1</sup>	59/55/52	50/53/60	50/53/60	55/60/65	58/61/64	62/67/71	62/67/71
	Airflow <sup>1</sup>	530/700/830	730/920/1170	730/875/1210	935/1150/1320	935/1150/1320	1420/1860/2180	1580/1920/2180
	Static pressure	25	25/60	25/60	25/60	25/80	20/100	30/100
	Dehumidification	1,3	1	1,24	1,5	2,5	3,3	4,6
	Dimensions (WxDxH)	860x245x680	790x256x749	790x256x749	790x256x749	790x256x749	854x300x816	854x300x816
	Weight	30	29	29	29	31	33	33
	<b>Part number</b>	<b>7SP022345</b>	<b>7SP022403</b>	<b>7SP022404</b>	<b>7SP022405</b>	<b>7SP022406</b>	<b>7SP032086</b>	<b>7SP032087</b>
	<b>Price</b>	€						
	<b>Outdoor unit</b>	Sound pressure level 1 mt	52	53	56	56	56	56
Sound power level		62	63	65	66	66	69	73
Airflow		1780	2160	2860	3600	3600	5200	5700
Compressor type		Rotary DCI	Scroll DCI	Scroll DCI	Twin Rotary DCI	Twin Rotary DCI	Scroll DCI	Scroll DCI
Dimensions (WxDxH)		795x290x610	795x290x610	846x370x690	950x412x835	950x412x835	1255x340x900	1255x340x900
Weight		38	39	46	64,5	66	110	110
<b>Power supply 1-230V - 50 Hz</b>	<b>Part number</b>	<b>7SP061421</b>	<b>7SP061422</b>	<b>7SP061614</b>	<b>7SP061677</b>	<b>7SP061616</b>	<b>7SP061675</b>	<b>7SP061676</b>
	<b>Price</b>	€						
	<b>Full set price</b>	€						
<b>Power supply 1-230V - 50Hz</b>	Power supply side	Indoor	Indoor	Indoor	Outdoor	Outdoor	Outdoor	Outdoor
	Power cable section	3x1,5	3x2,5	3x2,5	3x2,5	3x2,5	3x4,0	3x6,0
	Fuse rating am	16	20	20	20	20	25	32
	Electrical connections	4x1,5	4x2,5	4x2,5	4x2,5	4x2,5	3x1,5	3x1,5
<b>Pipe line</b>	Suction pipe diameter	3/8"	1/2"	1/2"	5/8"	5/8"	5/8"	3/4"
	Liquid pipe diameter	1/4"	1/4"	1/4"	3/8"	3/8"	3/8"	3/8"
	Max lenght	20	30	30	50	50	70	70
	Max height	10	15	15	25	25	30	30

<sup>1</sup>Data are relative to Low speed, Medium speed and High speed



<b>Accessories</b>		BS 12 DCI	DLS 18 DCI	DLS 21 DCI	DLS 24 DCI	DLS 30 DCI	DLS 36 DCI	DLS 43 DCI
N°1 cassette air intake plenum kit	7ACVF0075	€						
N°2 duct connection plenum kit	7ACVF0073	€						
Air supply plenum	7ACVF0317	€						
Mounting bracket	7ACTL0016	€	-	-	-	-	n.a.	n.a.
	7ACTL0018	€	-	-	-	-	n.a.	n.a.
Remote control RCW2	7ACEL1212	€						

**DLS  
DC INVERTER**

**MAIN ADVANTAGES  
OF DLS DC INVERTER  
MODEL**



**"V" BATTERY**

The Airwell units are the most compact existing on the market; this is due to the innovating design of its battery.



**ABS FAN**

**High Technology**

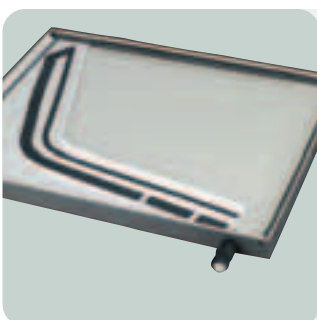
The only ducted unit using a high-technology plastic fan thus guaranteeing:

- good air flow rate
- excellent static pressure available
- extremely low operating sound level.



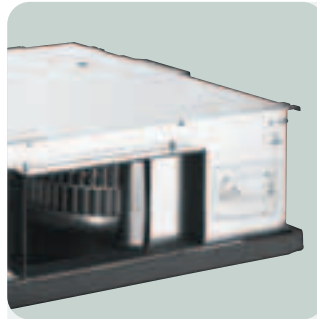
**FLOAT VALVE**

Safety element.  
Avoids condensate stagnation.



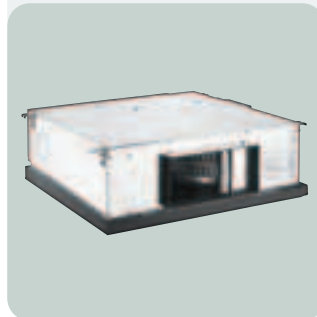
**CONDENSATE  
DRAIN PAN**

The condensate drain pan collects fluids from the heat exchanger (these fluids are due to the condensation occurring in the exchanger).



**MINIMUM HEIGHT**

Its reduced height (300 mm max) enables it to be perfectly integrated in any type of false ceiling.



Models 18-24-30  
Reduced height: 260 mm



**ELECTRICAL  
CONNECTION PANEL**

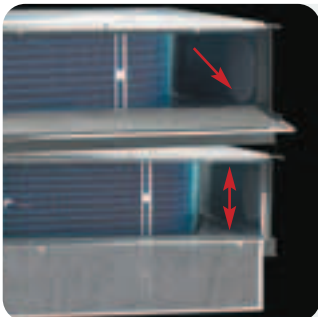
Safety elements designed to avoid possible condensate drainage problems.





### REFRIGERANT TUBING CONNECTIONS

Installed in the top part of the device to facilitate installation.



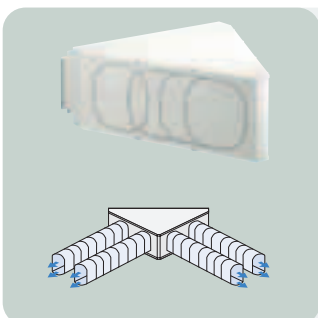
### FILTER

Removable filter with simple and easy maintenance.



### AIR INTAKE

Designed for perfect ventilation.



### ACCESSORIES

**Option: air flow plenum for models 18, 21, 24 and 30.**

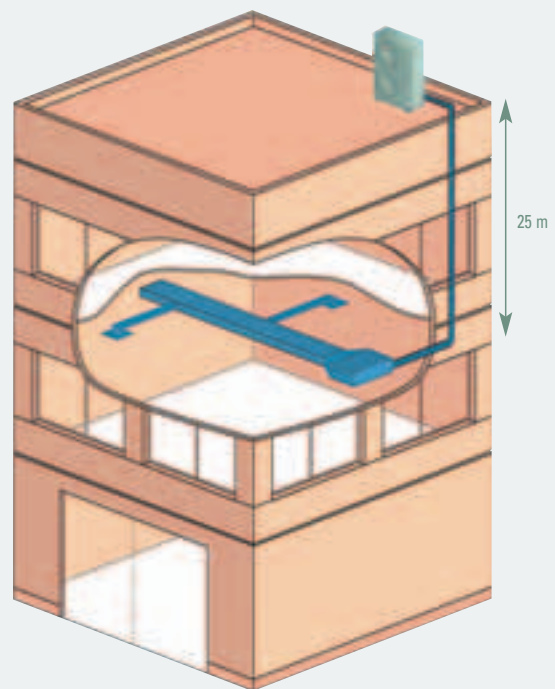
This plenum connects the unit to a duct network (ideal for installing circular duct networks on the rectangular blowing part of the unit), and can be configured in several manners.

### LONG LENGTHS OF REFRIGERANT TUBING CONNECTIONS BETWEEN INTERNAL AND EXTERNAL UNITS

Models 24 and 30: 50 metres of connection possible with an elevation difference of 25 metres.

Installation facilitated and reduced costs.

Possibility of installing outdoor units on a terrace to avoid altering the nature of building front walls.



Elevation difference of 25 m.

RC4



### REMOTE CONTROL

**Well-being at your fingertips**

Electronic control for the entire range (included).

Multi-function electronic control system consisting of an IR receiver and a remote control.

The entire range benefits from the following functions: on/off; cold/hot/ventilation; time programming; room temperature indication; I feel function; automatic programming; night slowdown function.