



		XLS 7	XLS 9	XLS 12
<b>Cooling capacity (1)</b>	<b>kW</b>	<b>2,13</b>	<b>2,56</b>	<b>3,3</b>
Power input	kW	0,78	0,97	1,23
Airflows (Medium Speed)	m <sup>3</sup> /h	350	420	340

<b>Noise levels (3)</b>				
- Indoor: acoustic pressure at 1m (LS/MS/HS)	dB(A)	36/38/39	38/40/42	38/41/45
- Outdoor acoustic pressure at 1 m	dB(A)	51	50	53

<b>Power supply</b>				
<b>1 - 230 V - 50 Hz</b>				
Voltage range		198/254 V		
Motor fuse rating (1 ~ 230 V)	A	6	8	10
Power supply cable section	mm <sup>2</sup>	3x1,5	3x1,5	3x1,5
Power supply side		Outdoor	Outdoor	Outdoor
Compressor type		Rotary	Rotary	Rotary
Remote control		RC4 - RCW2 (accessory)		

<b>Linking specification between indoor and outdoor units</b>				
<b>Pipe links (not supplied)</b>				
Maximum pipe length	m	10	15	12
Maximum height difference	m	6	6	7
Liquid pipe diameter	Inches	3/8"	3/8"	1/2"
Suction pipe diameter	Inches	1/4"	1/4"	1/4"
<b>Power cable section (not supplied)</b>				
1 ~ 230 V version	mm <sup>2</sup>	4x1,5	4x1,5	4x1,5



		XLS 7RC	XLS 9RC	XLS 12RC
<b>Heating capacity (2)</b>	<b>kW</b>	<b>2,23</b>	<b>2,78</b>	<b>3,6</b>
Power input	kW	0,71	1	1,35

<b>Power supply</b>				
<b>1 - 230 V - 50 Hz</b>				
Voltage range		198/254 V		
Motor fuse rating (1 ~ 230 V)	A	6	8	10
Power supply cable section	mm <sup>2</sup>	3x1,5	3x1,5	3x1,5
Power supply side		Indoor	Indoor	Indoor
Compressor type		Rotary	Rotary	Rotary
Remote control		RC4 - RCW2 (accessory)		

<b>Linking specification between indoor and outdoor units</b>				
<b>Pipe links (not supplied)</b>				
Maximum pipe length	m	10	10	12
Maximum height difference	m	6	6	7
Liquid pipe diameter	Inches	3/8"	3/8"	1/2"
Suction pipe diameter	Inches	1/4"	1/4"	1/4"
<b>Power cable section (not supplied)</b>				
1 ~ 230 V version	mm <sup>2</sup>	5x1,5	5x1,5	5x1,5

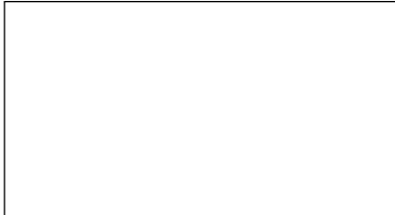
<b>Dimensions and weight</b>				
<b>Indoor unit</b>				
Weight	kg	14	14	14
Dimensions (WxDxH)	mm	570x140x570	570x140x570	570x140x570
<b>Outdoor unit</b>				
Weight	kg	29	35	38
Dimensions (WxDxH)	mm	830x245x545	795x290x610	795x290x610

NOTES: All values are specified for a 230 V or 3N 400 V- 50 Hz supply voltage.  
 (1) Nominal cooling capacity: International conditions (Standards NF EN 255.2 - NF EN 814.2): 27° C / 19° C (wet bulb) - Outdoor air temperature 35° C / 24° C (wet bulb).  
 (2) Nominal heating capacity: International conditions: 20° C / 12° C (wet bulb) - Outdoor air temperature 7° C / 6° C (wet bulb).  
 (3) Acoustic levels. Global acoustic pressure in dBA at 1 m under nominal conditions: outdoor unit in an open area against a reflective background - indoor unit: installation in an average sized room (LS - 0.5 s reverberation).



ACE - 1 bis, av. du 8 mai 1945 - Saint-Quentin-en-Yvelines  
 F - 78284 Guyancourt Cedex  
 Fax : +33 (0) 1 39 44 11 55 - Tel. : +33 (0) 1 39 44 78 00  
[www.airwell.com](http://www.airwell.com)

Your approved distributor **Airwell**

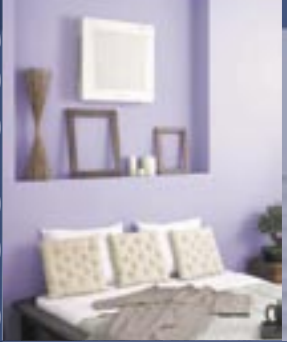


FC XLS R407C 04-790(A) ACE - MARKETING RCS VERSAILLES B 421 305 986 - These specifications are provided for information purposes only and are subject to change without notice - Non contractual photos - Printed in the EU.

technological



discreet



## Low and high wall mounted Splits Louisiana XLS

Cooling only



Cooling only



R407C



silent



**Airwell**  
Air Conditioning

WALL MOUNTED RANGE

The latest technology is pushing back the frontiers in terms of optimising user comfort and simplifying installation.

With its pure, flowing lines, the LOUISIANA XLS represents a fine example of today's design trends. Its High Tech control panel and its slender styling enable it to blend harmoniously into all types of interior décor. Its discreet and elegant presence matches perfectly the latest demands of the residential and tertiary sectors.

**Ultra silent:**

36 dBA at 1 metre  
Louisiana XLS air conditioners are exceptionally silent in operation.

**Super slim:**

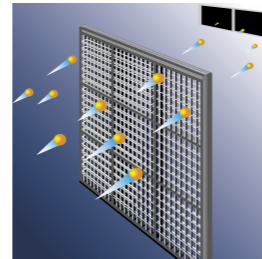
Depth 140 mm  
With their unrivalled slim design, Louisiana XLS air conditioners only measure 14 mm in depth, being considerably less than traditional air conditioners.

**Multi position installation high or low wall mounted**

Being extremely practical, Louisiana XLS air conditioners can be installed at any height on the wall, even at low floor level.

benefits

Now, the air conditioners from the LOUISIANA range represent an alternative to other wall mounted appliances available on the market. It provides unrivalled comfort levels in terms of compact design and distributed air quality, as treated air can be blown in 4 different directions. Depending on the operating mode and the nature of the comfort sought, the user is free to close 1 or 2 blowing flaps.



**Filtration: Optimised air quality**

In addition to the standard air filter, XLS air conditioners are equipped with a «high efficiency» electrostatic filter. Particulates such as tobacco smoke, pollen etc. are absorbed, thereby ensuring irreproachable air quality. A warning light indicates when it is time for it to be cleaned.



Indoor unit



**4-directional blowing**

Treated air is distributed in 4 different directions. The treated air can be directed to optimise user comfort in relation to the operating mode selected.

**Cooling mode:**

The air blown upwards fall back to the floor in a uniform manner to cool the room.

**Heating mode:**

The air blown downwards rises from the floor progressively for even distribution throughout the room.

**Lateral blowing:**

Provides the remaining contribution to uniform air distribution without creating any feeling of draughts.



GC XLS outdoor unit 9 and 12 models

**Night time slow running**

This function adapts the temperature for ideal night time rest conditions and energy savings. Both in Cooling and Heating modes, it is possible to automatically programme 3 different set temperatures. Energy consumption is thus reduced by 7% per degree, representing considerable energy savings.

**Remote controls**



**Infrared remote control.**

For distances up to 8 m.

**Wall mounted remote control.**

Available as an accessory: hardwired control. Possibility of connecting up to 32 indoor units (15 different zones). Maximum cable length: 300 m.

**A choice of state of the art, ergonomic multi-functions remote controls.**

- Automatic Cooling : heating regulation.
- 3 ventilation (fan) speeds.
- Automatic ventilation.
- I FEEL function.
- Night time slow running.
- Dual treated air sweeping: horizontal and vertical directions.
- Dehumidification.
- 2 programming zones: week & weekend.
- Backlit LCD display.

Programming

Thanks to its microprocessor, the air conditioning unit is capable of managing user comfort on its own. Programming enables deferred system starting or stopping, thus optimising energy consumption savings. The user has two programming time zones available: one for the week, and one for the weekend (for example).